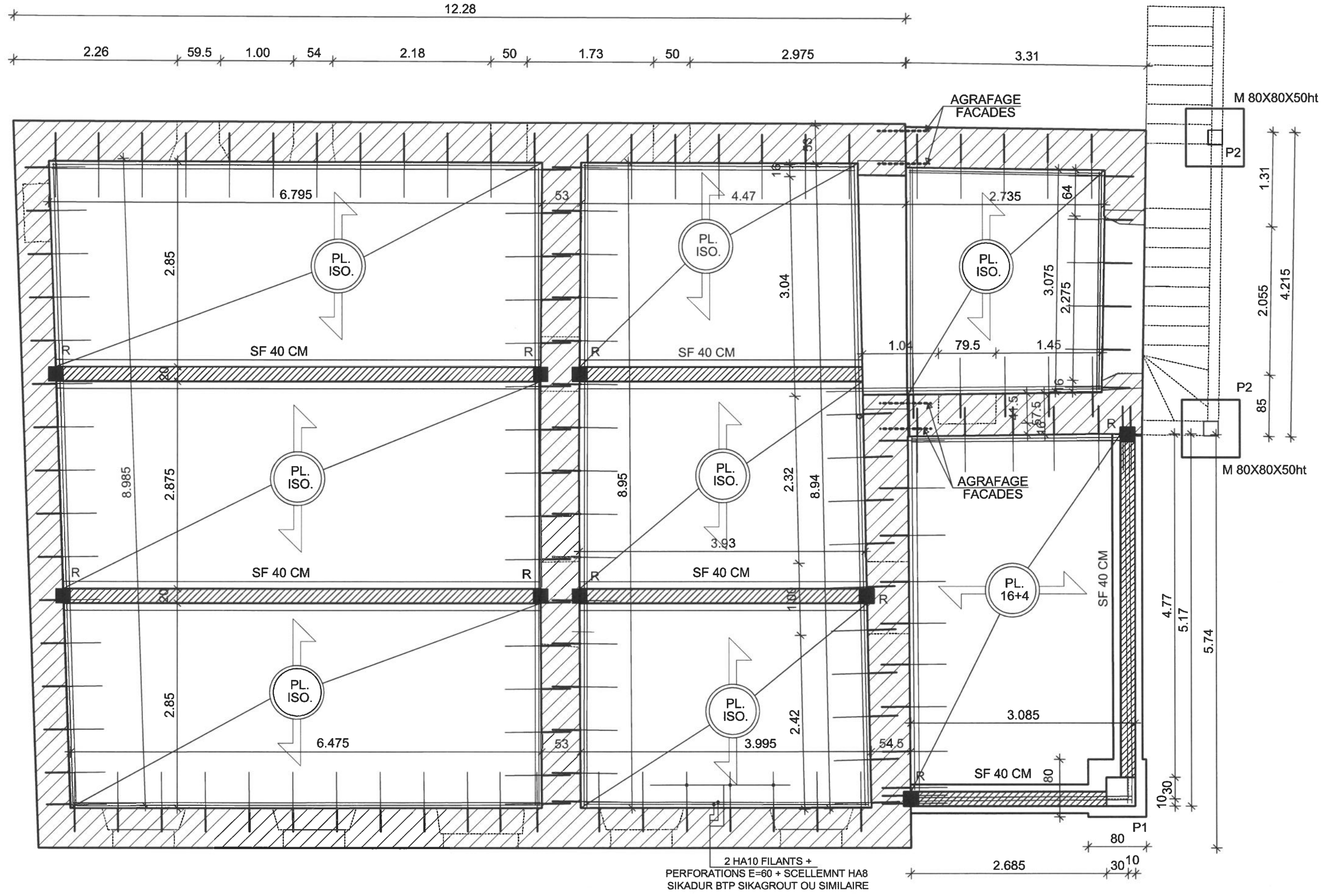
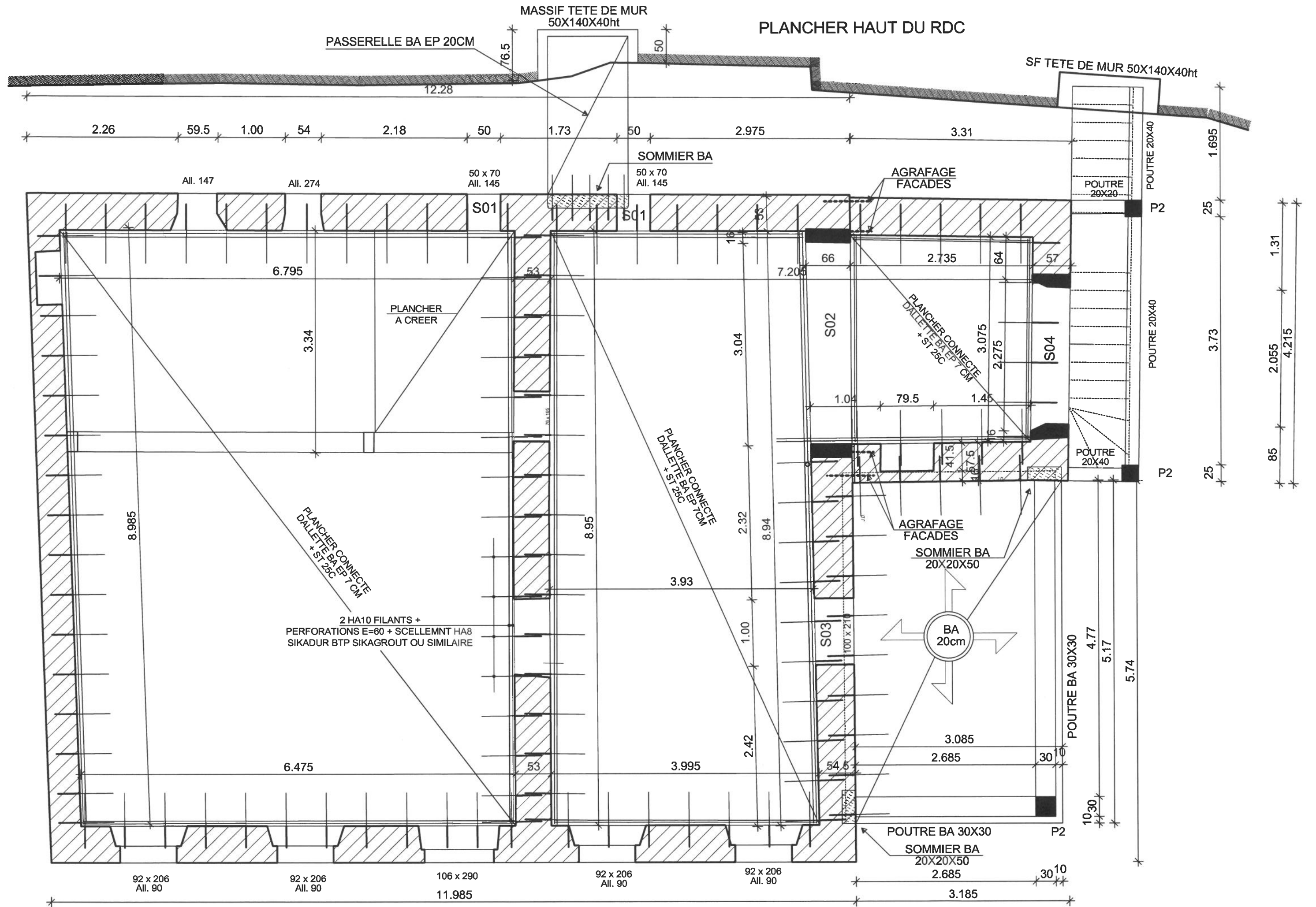
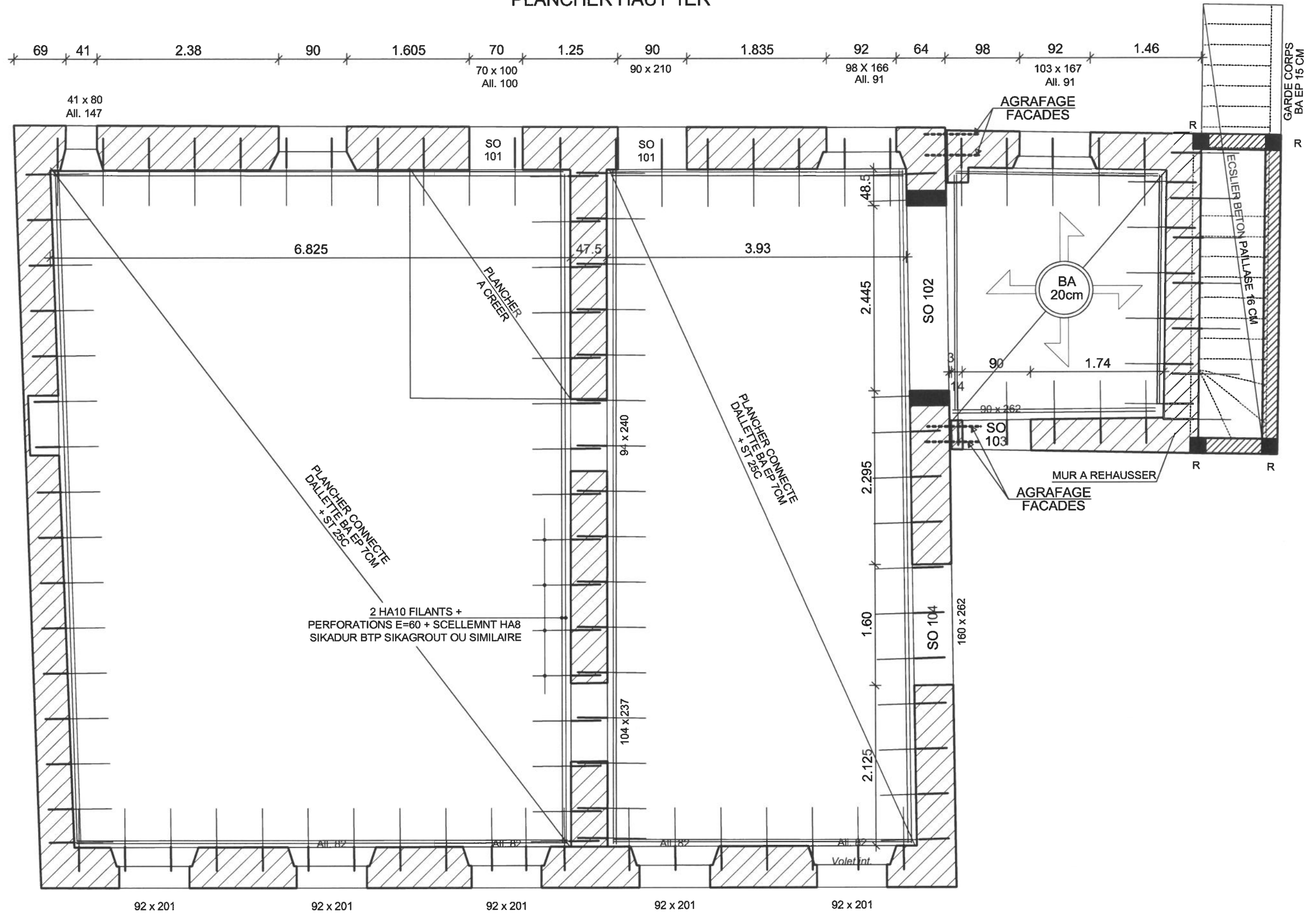


FONDATEMENTS PLANCHER BAS DU RDC



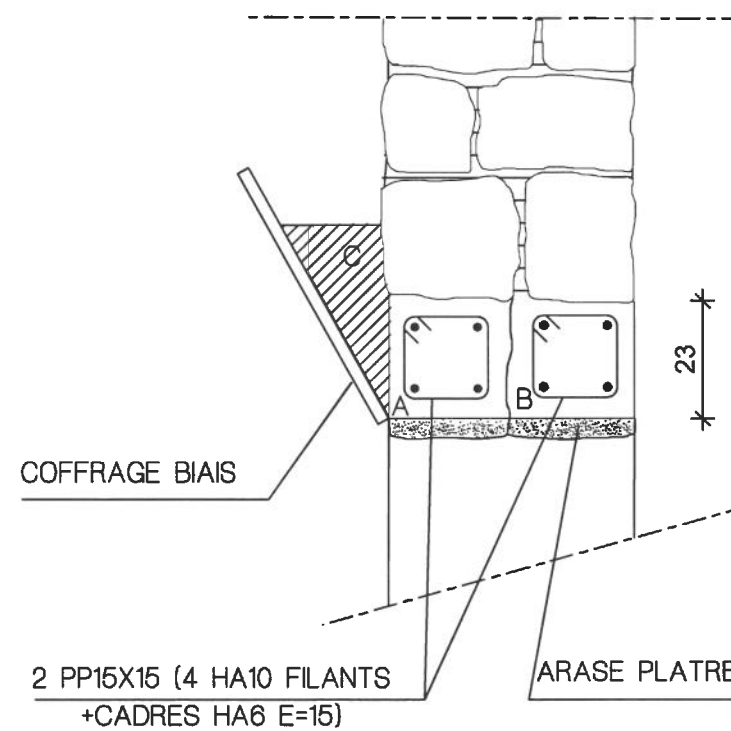
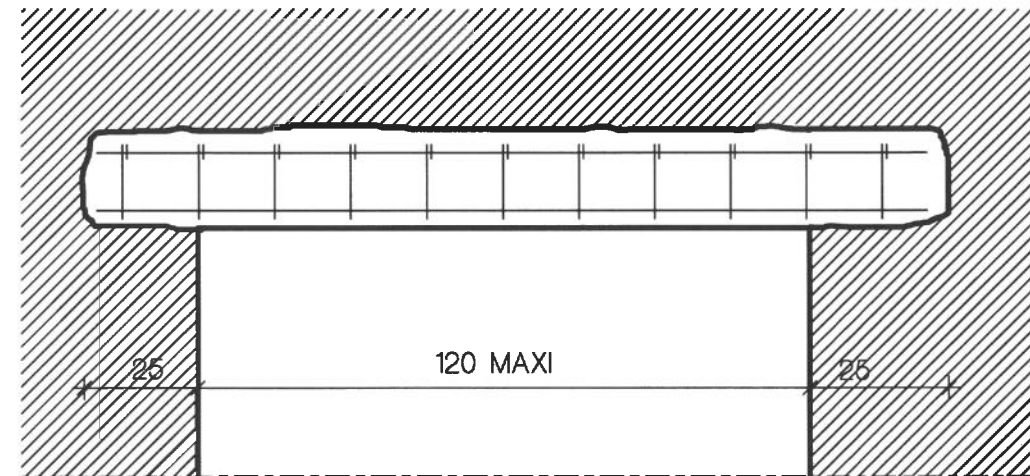


PLANCHER HAUT 1ER



SO 120 MAXI

ECHELLE 1 / 15



SO

ORDRE D'INTERVENTION

- 1 RESERVATION A 20X25 L=140
- 2 EXECUTION DE L'ARASE AU PLATRE
- 3 MISE EN PLACE ET CALLAGE DU PP 15X15
- 4 COFFRAGE BIAIS
- 5 COULAGE DU BETON (ferme + vibrations)
- 6 DECOFFRAGE ET REPIQUAGE ZONE C
- 7 -----IDEM POUR B
- 8 DEMOLITION REPIQUAGE DU PLATRE DRESSAGE
DES TABLEAUX ET REALISATION DU SEUIL

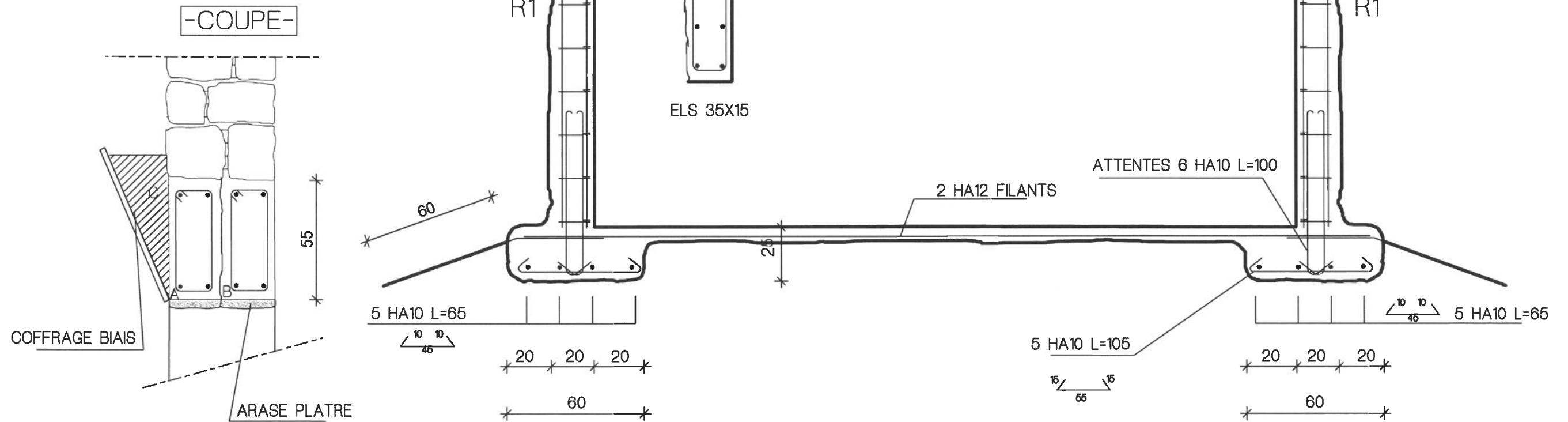
SOUS OEUVRE 320 MAXI

ECHELLE 1 / 20

ELEVATION

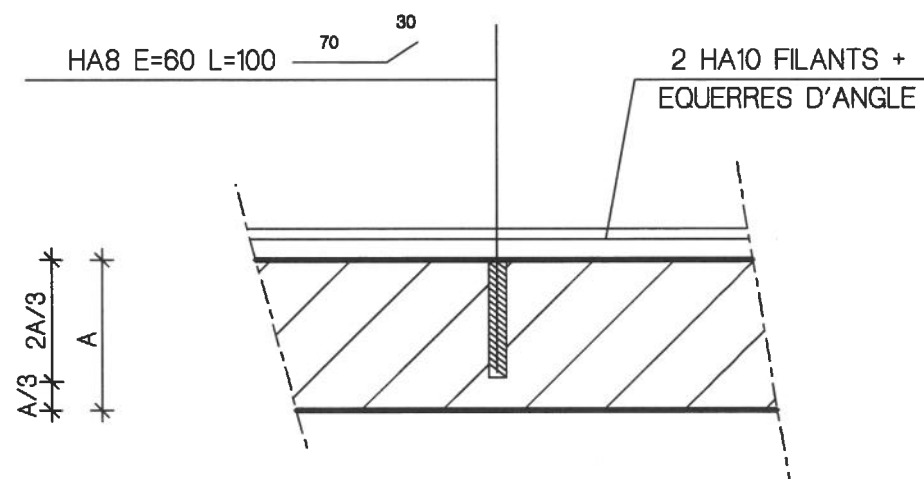
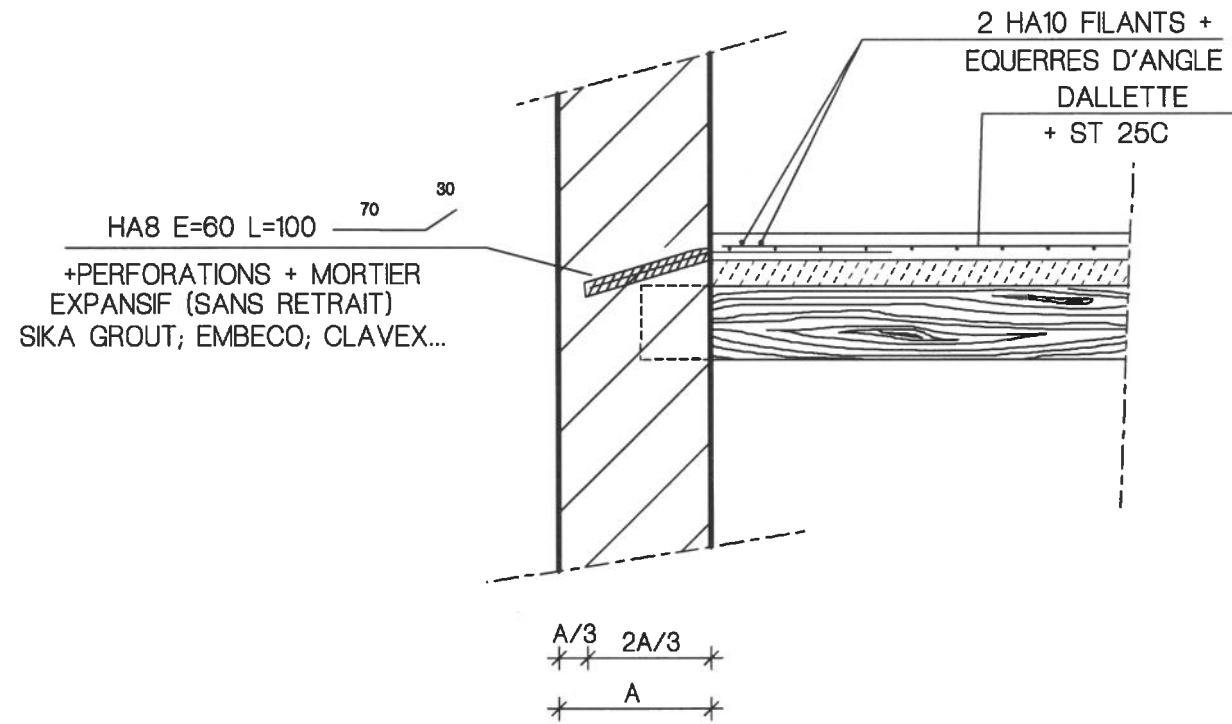
CHRONOLOGIE DES TRAVAUX

- 1 RESERVATION DE P1 R1 ET A
- 2 EXECUTION DE L'ARASE AU PLATRE
- 3 MISE EN PLACE ET CALLAGE DES ARMATURES DE A P1 R1
- 4 COFFRAGE BIAIS
- 5 COULAGE DU BETON (ferme + vibrations)
- 6 DECOFFRAGE ET REPIQUAGE ZONE C
- 7 -----IDEM POUR B
- 8 DEMOLITION REPIQUAGE DU PLATRE ET REALISATION DU SEUIL



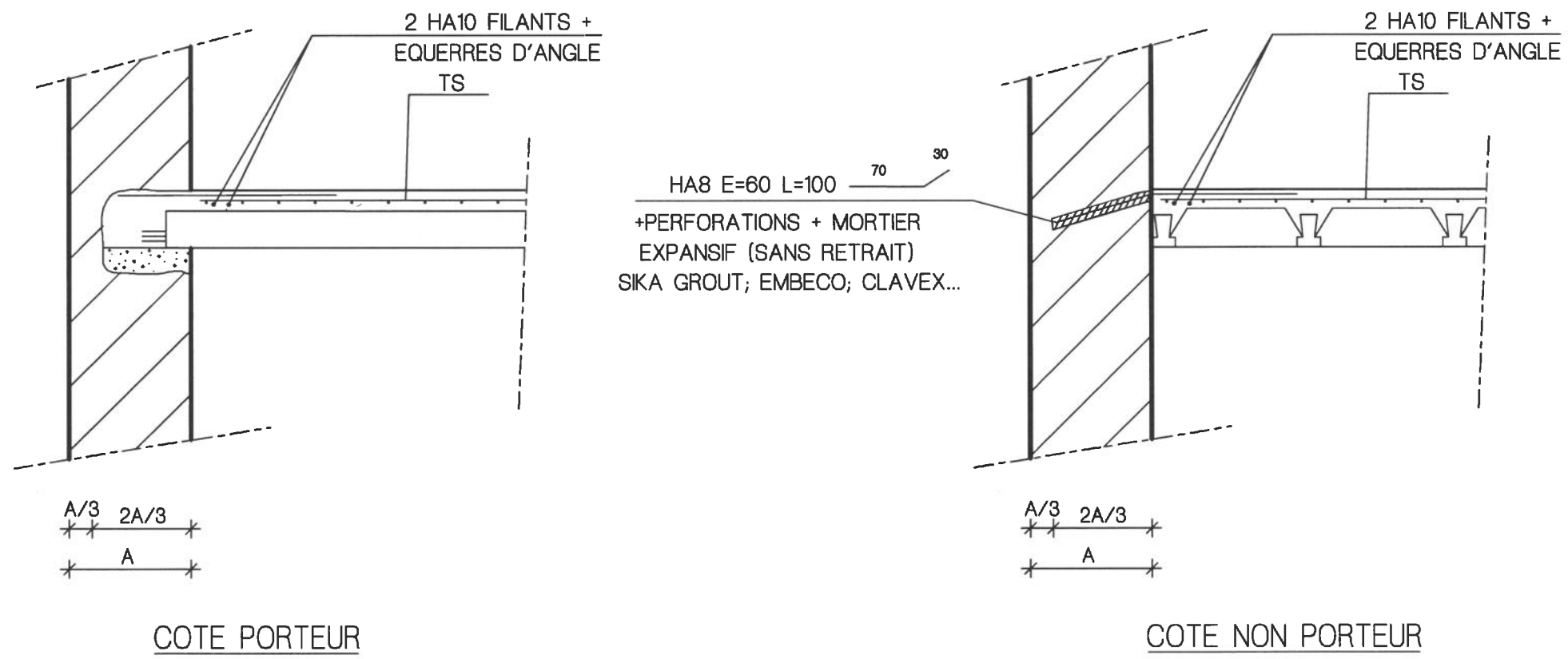
LIAISON PLANCHERS MURS

ECHELLE 1 / 25



DETAIL APPUIS POUTRELLES

ECHELLE 1 /25



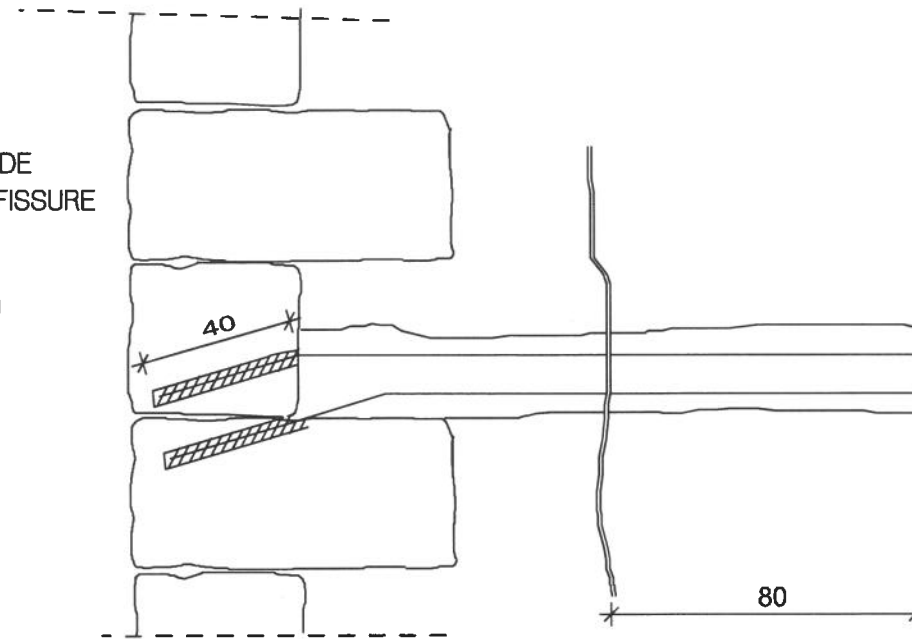
AGRAFAGE D'UNE FISSURE EN RIVE D'UNE CHAINE D'ANGLE

ECHELLE 1 /20

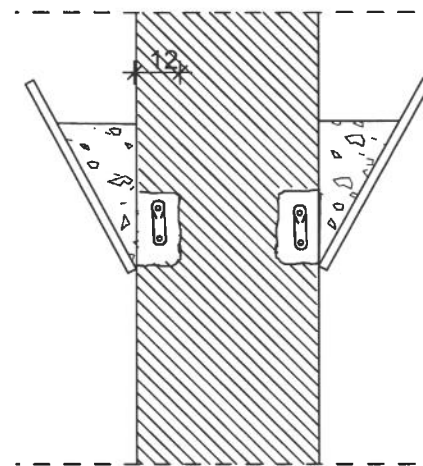
ELEVATION

METHODOLOGIE

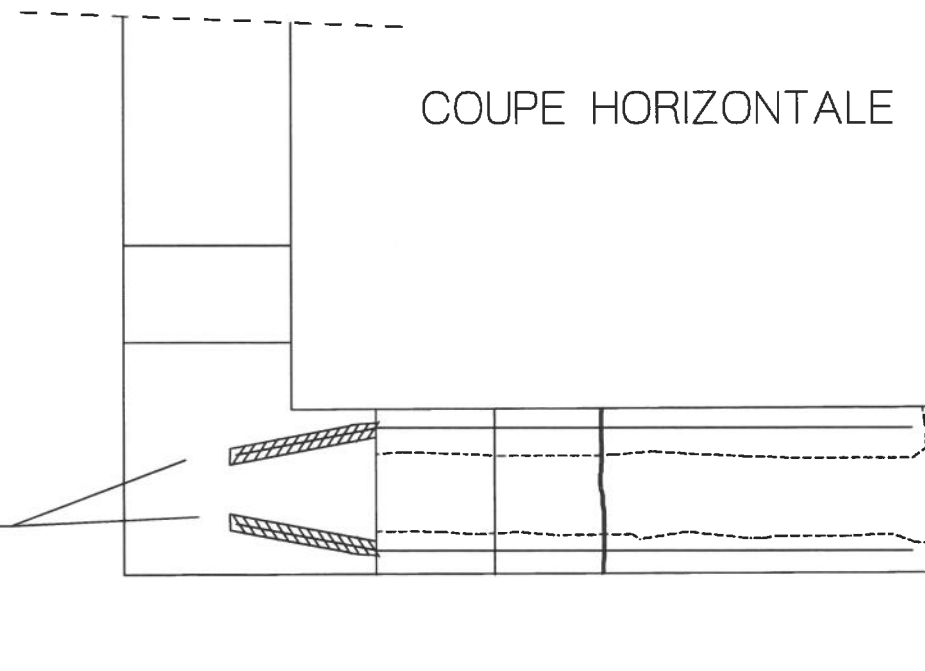
- 1 OUVERTURE DES FISSURES REMMAILLAGE DE LA MAÇONNERIE ET REBOUCHAGE DE LA FISSURE
- 2 EXECUTION DES RESERVATIONS (15X20X12)
- 3 EXECUTION DES PERFORATIONS ($\varnothing 32$ L=40)
- 4 SCÈLEMENT DES ARMATURES DE COUTURE (4HA10)
- 5 REBOUCHAGE AU BETON DES RESERVATIONS (COFFRAGE INCLINE)
- 6 REPICAGE ZONE BIAISE



COUPE VERTICALE



COUPE HORIZONTALE



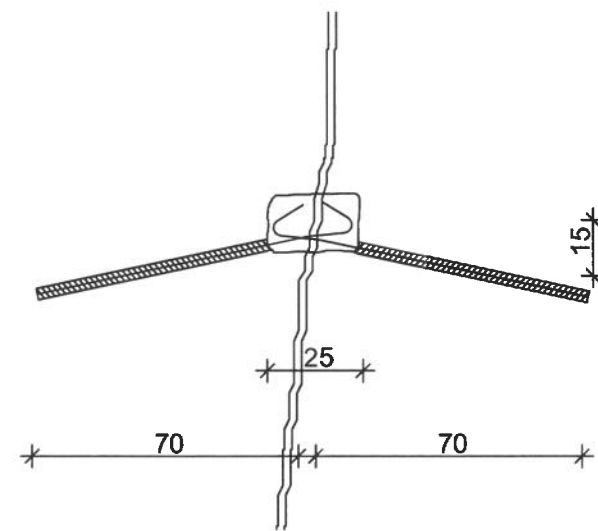
2X2 HA10

+PERFORATIONS + MORTIER
EXPANSIF (SANS RETRAIT)
SIKA GROUT; CLAVEX...

AGRAFES BIAISES

ECHELLE 1 / 20

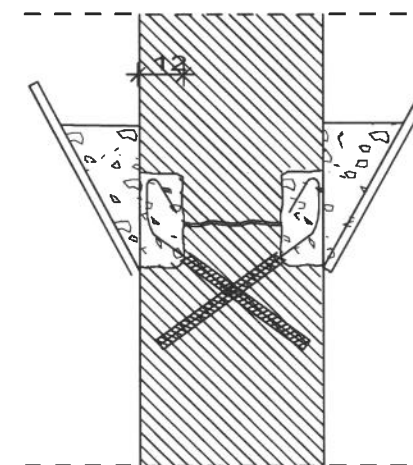
ELEVATION



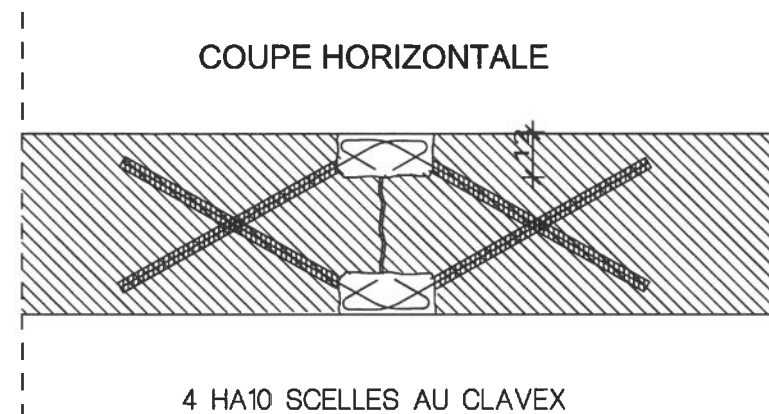
METHODOLOGIE

- 1 OUVERTURE, CALFEUTREMENT ET COULINAGE DE LA FISSURE
- 2 EXECUTION DES RESERVATIONS (15X25X12)
- 3 EXECUTION DES PERFORATIONS ($\varnothing 32$ L=60)
- 4 SCELLEMENT DES ARMATURES DE COUTURE (4HA8 L=0.90)
- 5 REBOUCHAGE AU BETON DES RESERVATIONS (COFFRAGE INCLINE)

COUPE VERTICALE



COUPE HORIZONTALE



4 HA10 SCELLES AU CLAVEX

E=200 POUR FISSURES HAUTEUR D'ETAGE