

液压直流动力单元 HYDRAULIC DC POWER UNIT



液压直流动力单元 Hydraulic DC Power Unit

16D组

Group 16D

额定输入功率: 1600W

Rated Input Power: 1600W

额定电压: DC 12 or 24V

Rated Voltage: DC 12 or 24V

齿轮泵排量范围: 1.1-3.2ml/Rev

Gear Pump Disp.: 1.1-3.2ml/Rev

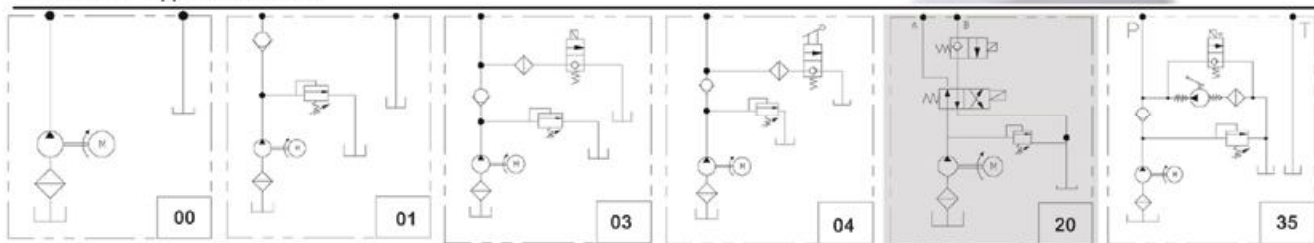
额定流量范围: 3.3-8.3LPM(0.87-2.2GPM)

Flow Rate: 3.3-8.3LPM(0.87-2.2GPM)

最大额定工作压力: 250Bar(3500PSI)

Maximum Operating Pressure: 250Bar(3500PSI)

常用油路 Typical Circuits



Example Model

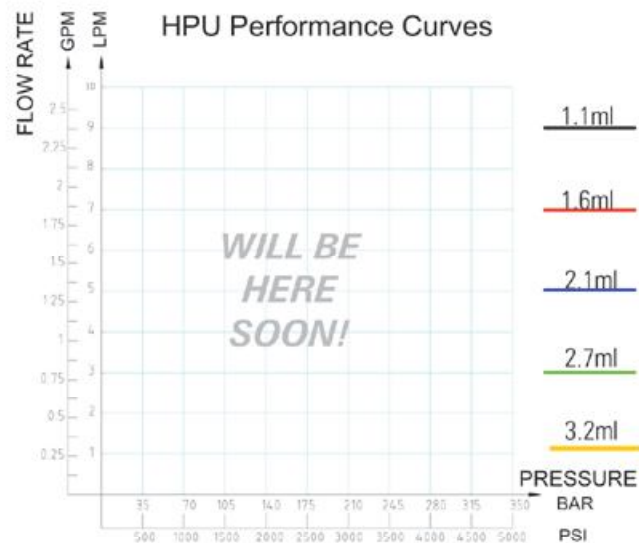
范例型号

P/N: 16D20-006

适用齿轮泵 Applicable Gear Pumps

齿轮泵排量 Gear Pump Displacement	(ml/rev)	1.1ml	1.6ml	2.1ml	2.7ml	3.2ml
额定流量 Rate Flow Rate	LPM @100BAR	3.3	4.5	5.6	7.2	8.3
	GPM @1500PSI	0.87	1.2	1.5	1.9	2.2
最大工作压力 Max. Operating Pressure	BAR	250	207	207	125	100
	(PSI)	3500	3000	3000	1800	1450

Test Fluid = HV46 Hydraulic Oil @ 100°F (SUS 192) /38°C (CST 42)



典型外形尺寸

Typical Outline Dimension

