

Fig. 4. CE-SSCP dendrogram based on Bray-Curtis distances between 16S rDNA-based profiles obtained from the different tested conditions. The initial community (To); non-amended controls (squares); samples amended with crude oil (circles) or crude oil with Inipol EAP 22 (inverted triangles) and samples amended with diesel oil (rhombs) or diesel oil with Inipol EAP 22 (triangles) are shown for incubation temperatures of 4 (white colour), 10 (grey) and 25 °C (black).

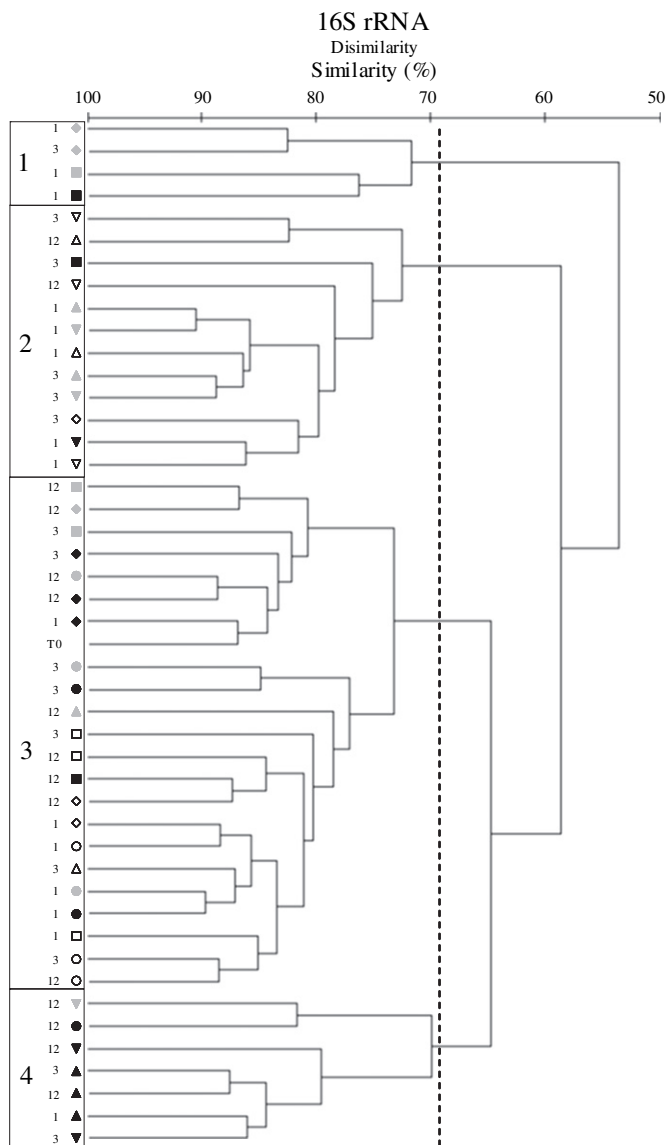


Fig. 5. CE-SSCP dendrogram based on Bray–Curtis distances between 16S rRNA-based profiles obtained from the different tested conditions. The initial community (To); non-amended controls (squares); samples amended with crude oil (circles) or crude oil with Inipol EAP 22 (inverted triangles) and samples amended with diesel oil (rhombs) or diesel oil with Inipol EAP 22 (triangles) are shown for incubation temperatures of 4 (white colour), 10 (grey) and 25 °C (black).