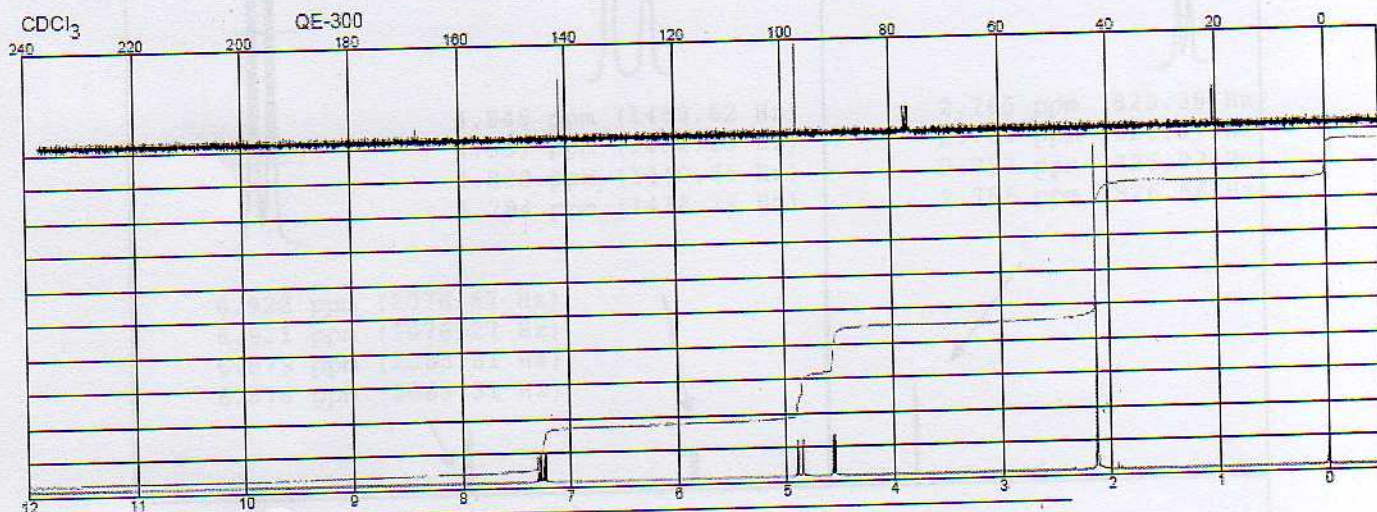
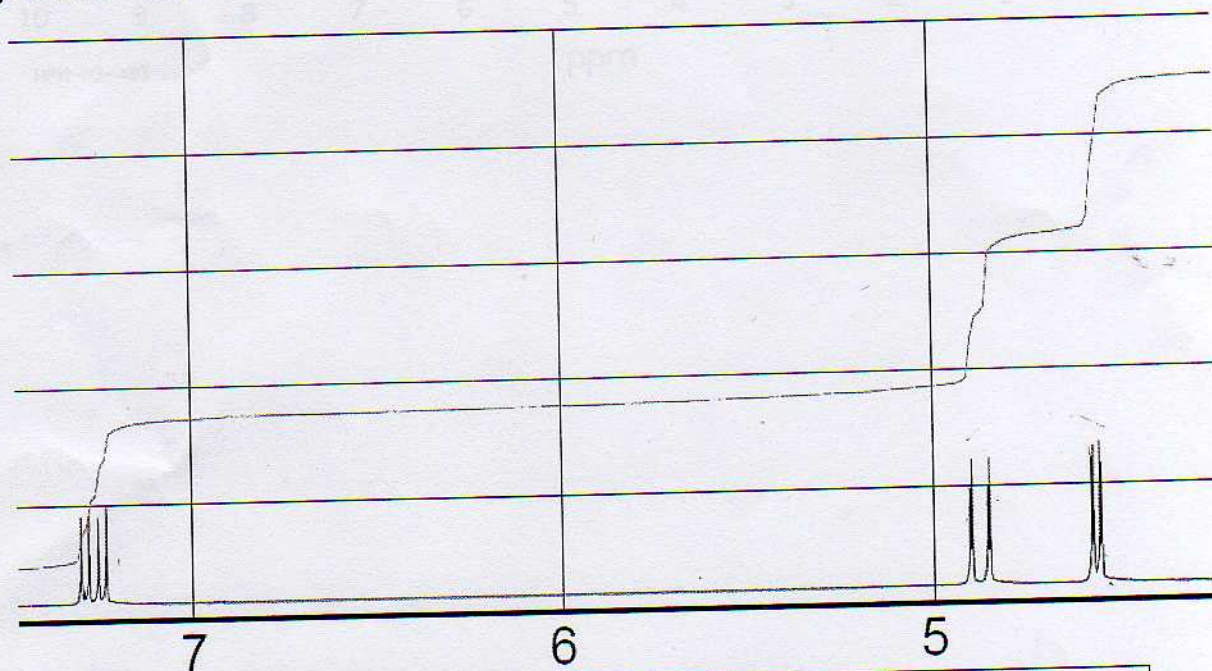


Déterminez la structure des 2 composés (A et B) à partir de la RMN 1H (Faire un tableau récapitulatif).

- Composé A de formule brute $C_4H_6O_2$ → Spectre 1



Agrandissement :



δ (ppm)	(Hz)	δ (ppm)	(Hz)
7.294	2188.22	4.853	1455.90
7.273	2181.98	4.576	1372.86
7.248	2174.26	4.571	1371.27
7.227	2167.97	4.555	1366.53
4.905	1471.44	4.550	1364.94
4.900	1469.86	2.131	639.29
4.858	1457.48		