

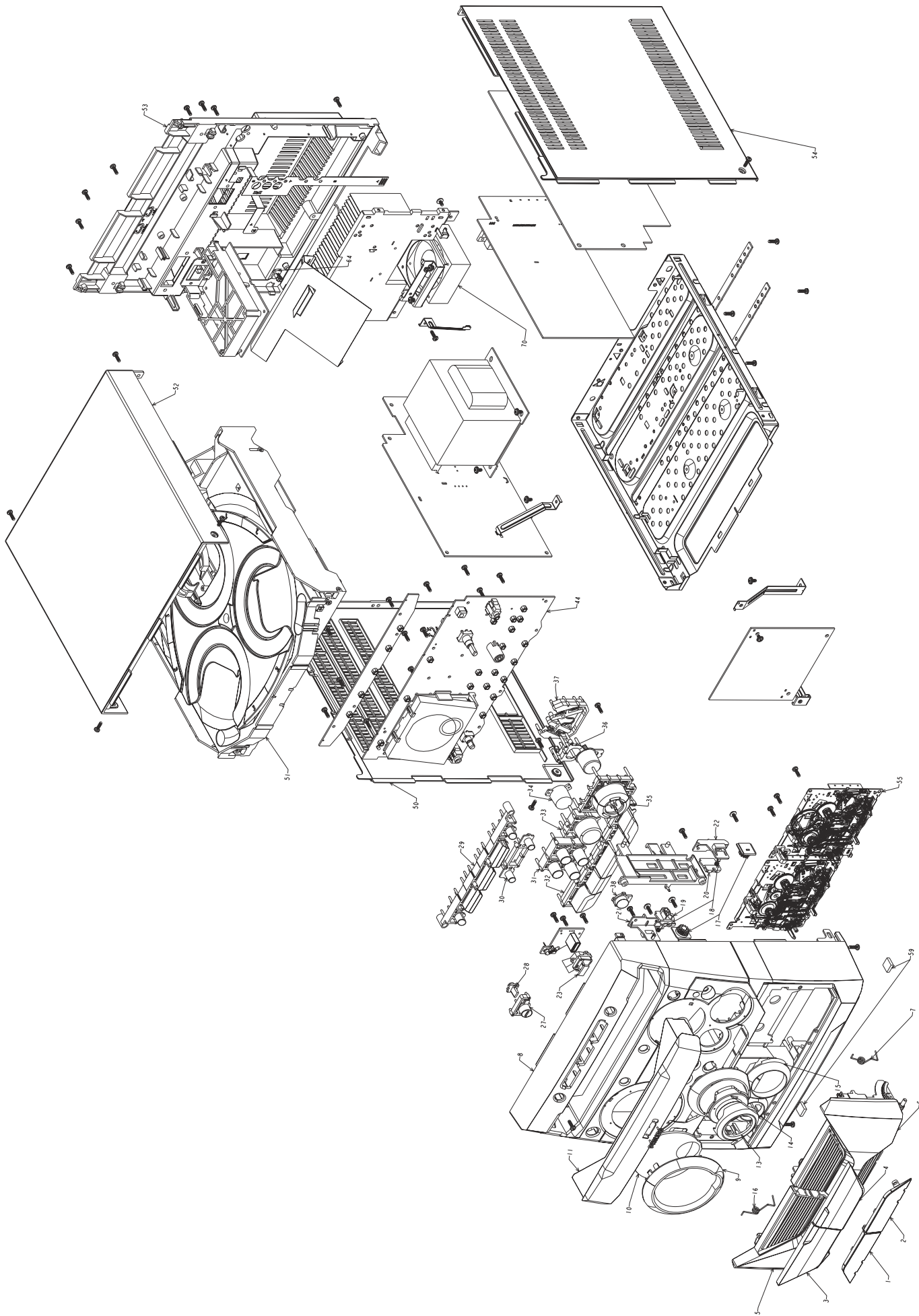
ELECTRICAL PARTS - AF9 BOARD

1501	9940 000 01221	RCA JACK 2P
3627	△ 9940 000 01358	FUSE RES.10Ω 1/4W +/-5%
3821	△ 9940 000 01358	FUSE RES.10Ω 1/4W +/-5%
7202	9940 000 01357	IC LM78L05-AC
7403	4822 209 17345	IC M62320FP
7501	9322 150 74668	IC SM TDA7468D
7601	5322 209 15853	IC NJM4556AM

Note: Only these parts mentioned in the list are normal service parts.

MECHANICAL EXPLODED VIEW

13-1



13-1

MECHANICAL & ACCESSORIES PARTS

	FWM372	FWM572	DESCRIPTION
1	9940 000 01292	9940 000 04503	CASS LENS BOTTOM L
2	9940 000 01291	9940 000 04502	CASS LENS BOTTOM R
3	9940 000 01289	9940 000 04501	CASS LEFT TOP LENS
4	9940 000 01288	9940 000 04499	CASS RIGHT TOP LENS
5	9940 000 01287	9940 000 04498	CASS BOX LEFT
6	9940 000 01286	9940 000 04497	CASS BOX RIGHT
7	9940 000 01267	9940 000 01267	SPRING -RIGHT
8	9940 000 04464	9940 000 04493	FRONT CAB. /12/05
8	9940 000 04794	9940 000 04516	FRONT CAB. /55
9	9940 000 01282	9940 000 01282	DISPLAY RING
10	9940 000 01308	9940 000 01308	DISPLAY LENS
11	9940 000 04463	9940 000 04489	CDC TRAY DOOR
13	9940 000 01297	9940 000 01297	VOL KNOB GRIP
14	9940 000 01296	9940 000 04505	VOL KNOB RING
15	9940 000 01281	9940 000 01281	COSMETIC RING
16	9940 000 01266	9940 000 01266	SPRING -LEFT
17	9940 000 01295	9940 000 01295	DAMPER GEAR ASS'Y
18	9940 000 01268	9940 000 01268	SPRING COMPRESSION
19	9940 000 01294	9940 000 01294	PUSH CATCH LEFT
20	9940 000 01293	9940 000 01293	PUSH CATCH
21	9940 000 01284	9940 000 01284	LEFT-BRACKET
22	9940 000 01283	9940 000 01283	RIGHT-BRACKET
23	9940 000 04466	9940 000 04495	USB DIRECT PANEL
27	9940 000 01304	9940 000 04509	STANDBY KEY
28	9940 000 01307	9940 000 01307	STANDBY LENS
29	9940 000 01305	9940 000 04511	CD DISC KEYS
30	9940 000 01302	9940 000 04508	AUTO KEYS
31	9940 000 04467	9940 000 04504	SOURCE KEYS
32	9940 000 01377	9940 000 04513	MODEL KEY
33	9940 000 01376	9940 000 04512	MAX KNOB
35	9940 000 01299	9940 000 04507	CD CONTROL KEY
36	9940 000 01298	9940 000 04506	CD PLAY KEY
50	9940 000 01276	9940 000 04491	PANEL LEFT
51	9940 000 04455	9940 000 04486	3CD MECHA ASS'Y
52	9940 000 01285	9940 000 04496	TOP COVER
53	9940 000 01375	9940 000 04494	REAR PANEL
54	9940 000 01277	9940 000 04492	PANEL RIGHT /FWM372
55	9940 000 04458	9940 000 04458	LOGIC DECK W991D-5168BF
59	9940 000 01264	9940 000 01264	FOOT RUBBER 4MM
64	9940 000 04465	9940 000 04465	STOPPER HEATSINK
70		9940 000 02001	FAN 12VDV 0.8W
△	9940 000 01487	9940 000 01487	AC CORD 1.6M /05
△	9940 000 01314	9940 000 01314	AC CORD SET 2M /12/55
	9940 000 01192	9940 000 01192	AM LOOP ANTENNA LAN-031
	9940 000 01381	9940 000 01381	FM ANT (BLACK) 1M
	9940 000 04437	9940 000 04437	REMOTE CONTROL
	9940 000 04438	9940 000 04471	SPK BOX ASS'Y L/R

ELECTRICAL PARTS - MISCELLANEOUS

	FWM372	FWM572	DESCRIPTION
	9940 000 01257	9940 000 01257	11P FFC 1.25MM L=260MM
	9940 000 01262	9940 000 01262	19P FFC 1.25MM L=280MM
	9940 000 01362	9940 000 01362	8P FFC1.25MM L=160MM
	9940 000 01363	9940 000 01363	7P FFC1.25MM L=180MM
	9940 000 01364	9940 000 01364	15P FFC1.25MM L=180MM
	9940 000 01366	9940 000 01366	4P FFC1.25MM L=240MM
	9940 000 01367	9940 000 01367	7P FFC1.25MM L=240MM
	9940 000 01368	9940 000 01368	7P FFC1.25MM L=370MM
	9940 000 01369	9940 000 01369	2P FLAT CABLE L=4+72+4MM
	9940 000 04456	9940 000 04456	16P FFC L=170MM
	9940 000 04457	9940 000 04457	5P FFC CABLE L=200MM
	9940 000 04461	9940 000 04461	12P FFC 1.25MM L=220MM
	9940 000 04462	9940 000 04462	4P FFC 1.25MM L=270MM
	9940 000 01501	9940 000 01501	TUNER BOARD ASS'Y /12/05
	9940 000 01964	9940 000 01964	TUNER BOARD ASS'Y /55
	9940 000 03669	9940 000 03669	CD DRIVER DA11VF
	9940 000 04442	9940 000 04442	TUNER FE450-G11 /12/05
	9940 000 04452	9940 000 04484	USB JACK BOARD ASS'Y
	9940 000 04454	9940 000 04454	CD USB BOARD ASS'Y
	9940 000 04485	9940 000 04485	CASS BOARD ASS'Y
	△ 9940 000 04459		TRASFO. EI76 230V /12
	△ 9940 000 04795		TRASFO. EI76 127/240V /55
	△	9940 000 04488	TRASFO. EI86 230V /12
	△	9940 000 04515	TRASFO. EI86 127/240V /55

Note: Only these parts mentioned in the list are normal service parts.