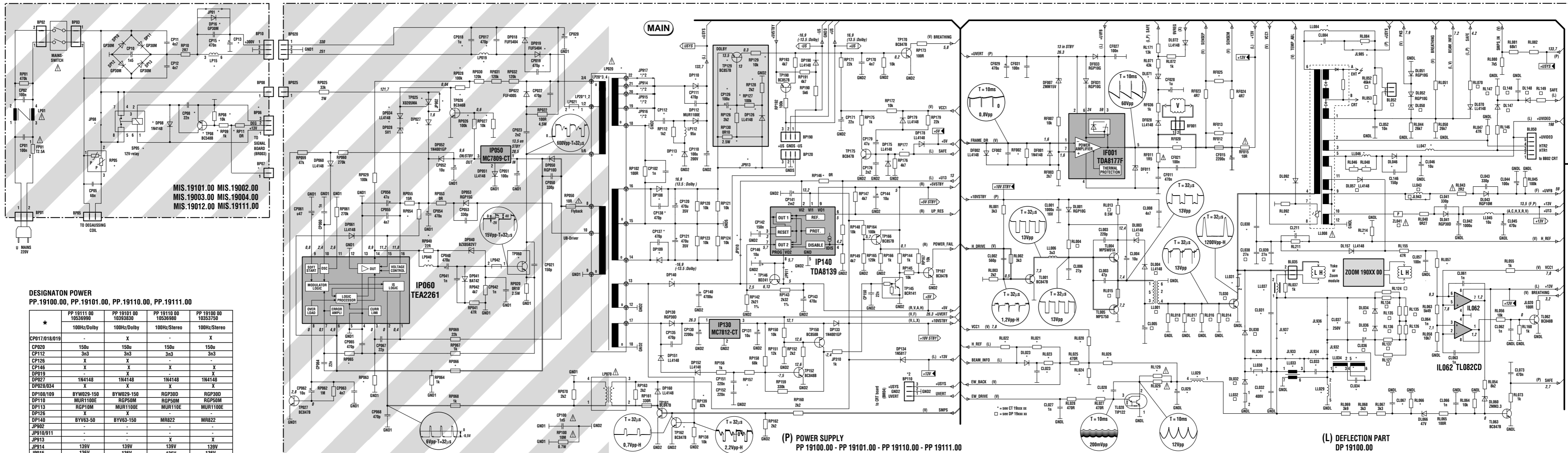


COMPLETE PCB DIAGRAM - SCHEMA PLATINE PRINCIPALE EQUIPEE - SCHALTUNG LEITERPLATTE KPL - SCHEMA PIASTRA COMPLETA - ESQUEMA PLATINA EQUIPADA



DESIGNATION POWER
PP.19100.00, PP.19101.00, PP.19110.00, PP.19111.00

* CP017/018/019	PP.19110.00	PP.19101.00	PP.19110.00	PP.19100.00
	100Hz/Dolby	100Hz/Dolby	100Hz/Stereo	100Hz/Stereo
CP020	150u	150u	150u	150u
CP112	3n3	3n3	3n3	3n3
CP126	X	X	-	-
CP146	X	X	X	X
DP019	1N4148	1N4148	1N4148	1N4148
DP027	X	X	X	X
DP028/034	X	X	X	X
DP108/109	BYW029-150	BYW029-150	RGPS00	RGPS00
DP110	MUR1100E	RGPS00M	RGPS00M	RGPS00M
DP113	RG10M	MUR1100E	MUR1100E	MUR1100E
DP126	X	X	X	X
DP140	BYV63-50	BYV63-150	MR822	MR822
JP902	-	-	X	X
JP910/911	-	-	-	-
JP913	130V	130V	130V	130V
JP915	136V	136V	136V	136V
JP916	130V	130V	127V	130V
JP917	142V	142V	142V	142V
LP019	-	105u	-	-
LP020	10397920	10397920	10397920	10459670
LP021	-	X	-	X
LP040	2u2	2u2	2u2	2u2
RP026/028	X	X	X	X
RP027	X	X	X	X
RP040	12W	12W	12W	12W
RP054	6R8	6R8	6R8	6R8
RP063	-	47k	-	47k
RP065	11k	12k1	11k	12k1
RP066	4k22	3k57	4k22	3k57
RP126/128	X	X	-	-
RP127/129	X	X	-	-
RP130	X	X	-	-
RP138/139	X	X	X	X
RP146	X	X	X	X
RP157	130k	130k	130k	130k
RP177	12k	12k	12k	12k
TP025/026	X	X	X	X
TP050	BUL810TH	BUL810TH	BUL810TH	BUL810TH
TP129	X	X	X	X
TP146	X	X	X	X
TP162	-	-	X	X

* different comp.	[BP06]	[BP07]	[CP08]	[CP13]	[CP15]	[DP08]	[DP16]	[JP01]	[JP08]	[LP15]	[RP05]	[RP08]	[RP09]	[SP05]	[TP08]
MIS.19101	100Hz+relay	X	X	X	150u	X	X	X	-	1.5mH	18R	X	X	X	X
MIS.19002	50Hz	-	-	100u	X	-	X	-	X	3mH	25R	-	-	-	-
MIS.19003	50Hz+relay	X	X	X	100u	X	X	X	X	3mH	18R	X	X	X	X
MIS.19004	50Hz/45W Pict.Pow.	-	-	-	-	X	-	X	X	3mH	25R	-	-	-	-
MIS.19012	50Hz	-	-	100u	-	-	-	X	X	25R	-	-	-	-	-
MIS.19111	100Hz+relay	X	X	X	150u	-	X	-	-	18R	X	X	X	X	X

X Inserted
- Not inserted

Part of board connected to mains supply.
Partie du chassis reliée au secteur.
Primärseite des Netzteils.
Parte dello chassis collegata alla rete.
Parte del chassis connessa a la red.

Use isolating mains transformer
Utilisez un transformateur isolateur du secteur
Einen Trenntrafo verwenden
Utilizar un transformador aislador de red
Utilizzare un trasformatore per isolarvi dalla rete

Note :
Power Supply primary circuit measurements.
- Use only (GND1) connection point.
Attention :
Mesure dans le bloc alimentation
- Utilisez la masse du bloc alimentation (GND1).
Achtung :
Bei Messungen im Primärnetzteil
- Primärnetzteilmasse verwenden (GND1).
Attenzione :
misura nell'alimentatore primario
- usare massa alimentazione primario (GND1).
Cuidado :
Medida en el bloque de alimentación
- Utilizar la masa del bloque de alimentación (GND1).

Safety Part
When repairing, use original part only
Pièce de sécurité
N'utilisez que les pièces d'origine
Sicherheitsbauteil
Bei Ersatz nur Originalteile verwenden
Componenti di sicurezza
durante la riparazione usare componenti originali
Pieza de seguridad
Utilice solo piezas originales

(P) POWER SUPPLY
PP.19100.00 - PP.19101.00 - PP.19110.00 - PP.19111.00

□	Deflection - Basic Partlists	
	100Hz	DP.19100.00
RL052	10 34 99 80	
RL005	470n/16V	
CL036	2u2/250V	
CL038	54n	
CL148	220n	
DL003/04		
DL030	DIY32F-1500	
DL032	B7100-800	
DL034/036	B7101-200	
DL050	BZX85C22	
DL057	470p	
DL147/148	LL4148	
JL943	10 46 87 60	
LL030	10 25 84 40	
LL032	10 25 84 40	
LL043	22u	
RF015	PTC-15R	
RL004	1k	
RL013	487	
RL014	40R2	
RL015	1R	
RL016/17	40R2	
RL018	40R2	
RL070	15k	
RL071	43k	
RL124/127	7k5	
RL134/137	7k5	
RL146	100R	
RL147	4k7	
RL149	1k	
TL030	0N4977	
ZL041	MP160	

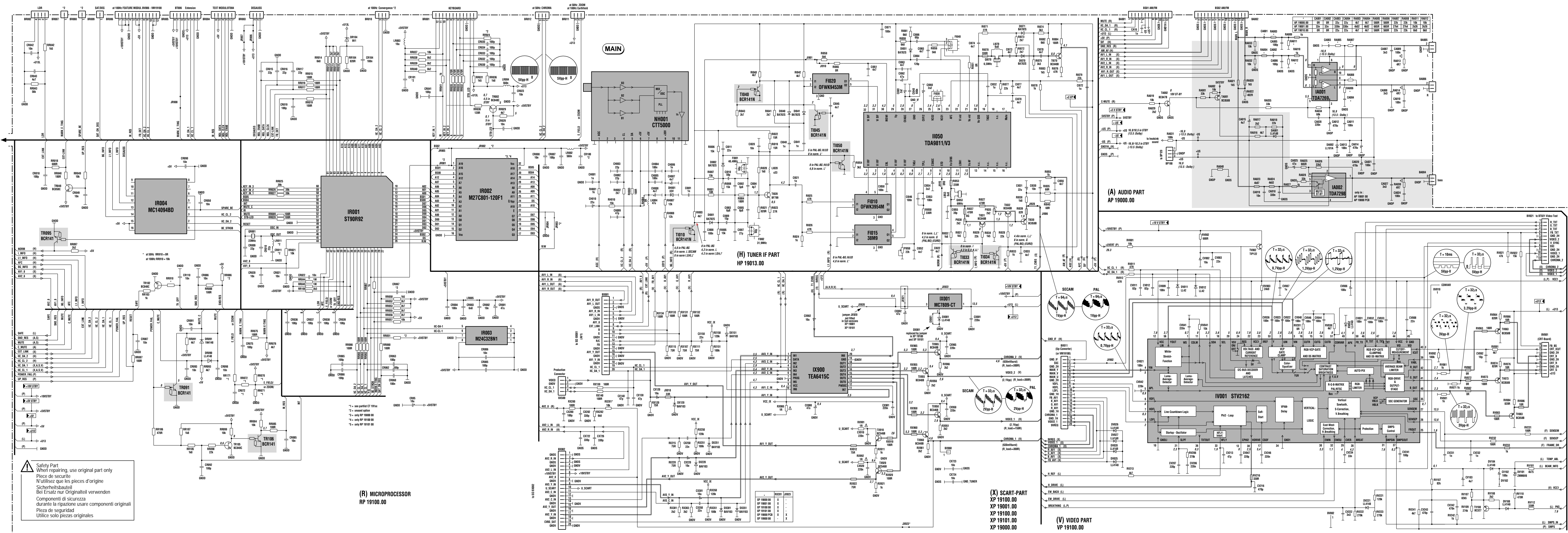
*	Deflection - Picture Tube related Partlists					
	CT 19101 34	CT 19105 37	CT 19152 37	CT 19111 34	CT 19112 34	CT 19151 34
CF002	10 36 28 80	10 35 15 30	10 52 06 10	10 44 48 10	10 47 54 60	10 52 06 00
CL023	100Hz	100Hz-MCU	100Hz	100Hz	100Hz-MCU	100Hz-MCU
CL028	25-28"MP 4/3	29"SF 4/3	29"SF 4/3	28"SF 16/9	32"SF 16/9	32"SF 16/9
CL029	680p	680p	680p	2n2	2n2	2n2
CL030	56n	1n	1n	56n	56n	56n
CL031	470n/63V	3u3/63V	470n/63V	470n/63V	470n/63V	470n/63V
CL032	1n9/2KV	1n9/2KV	1n9/2KV	2n7/2KV	2n7/2KV	2n7/2KV
CL033	11n6/2KV	11n6/2KV	11n6/2KV	11n6/2KV	11n6/2KV	11n6/2KV
CL034	33n/400V	24n/400V	24n/400V	33n/400V	33n/400V	33n/400V
CL035	560n/250V	-	680n/250V	680n/250V	680n/250V	680n/250V
CL036	12n/400V	12n/400V	12n/400V	12n/400V	12n/400V	12n/400V
CL037	680n/250V	410n/400V	410n/400V	560n/250V	560n/250V	560n/250V
CL067	100n/100V	100n/100V	100n/100V	100n/100V	100n/100V	100n/100V
CL068	3n9/400V	3n9/400V	3n9/400V	3n9/400V	3n9/400V	3n9/400V
CL121	470p	470p	470p	470p	470p	470p
DF011	10 36 82 10	10 36 82 10	10 36 82 10	10 36 82 10	10 36 82 10	10 36 82 10
DL023	-	-	-	-	-	-
DL046	MUR160	MUR160	MUR110DE	MUR160	MUR160	MUR110DE
DL071	BZX55C33	BZX55C33	BZX55C24	BZX55C24	BZX55C24	BZX55C24
DL092	1N4148	1N4148	1N4148	1N4148	1N4148	1N4148
JL932	-	-	-	-	-	-
JL933	-	-	-	-	-	-
JL934	-	-	-	-	-	-
JL936	-	-	-	-	-	-
JL937	-	-	-	-	-	-
JL985	X	X	X	X	X	X
LL008	10 46 03 60	10 46 80 70	10 51 08 70	10 46 81 60	10 46 81 60	10 52 03 30
LL029	10 34 76 50	10 15 42 70	10 15 42 70	10 34 76 50	10 34 76 50	10 34 76 50
LL030	-	-	-	-	-	-
LL031	LFBEAD 90R	LFBEAD 90R	LFBEAD 90R	LFBEAD 90R	LFBEAD 90R	LFBEAD 90R
LL033	10 34 76 60	7k5	7k5	10 34 76 60	10 34 76 60	10 34 76 60
LL034	10 15 32 70	10 15 32 70	10 15 32 70	10 15 32 70	10 15 32 70	10 15 32 70
LL037	4u2	3u7	4u	4u	4u	4u2
LL046	47u	47u	22u	47u	47u	22u
LL047	13u5	13u5	13u5	13u5	13u5	13u5
LL084	29u5	29u5	29u5	29u5	29u5	29u5

*	Deflection - Picture Tube related Partlists					
	CT 19101 34	CT 19105 37	CT 19152 37	CT 19111 34	CT 19112 34	CT 19151 34
RF002	10k	10k	10k	10k	10k	10k
RF012	1R	1R	1R	1R5	1R5	1R5
RF013	1R	1R	1R	1R82	1R82	1R82
RF020	180R	270R	270R	-	-	-
RF025	39R	43R	43R	150R	150R	150R
RL020	4k64	7k15	7k15	4k64	4k64	4k64
RL021	-	-	-	-	-	-
RL023	-	-	-	-	-	-
RL024	2k67	4k02	4k02	2k67	2k67	2k67
RL026	36k5	61k9	61k9	36k5	36k5	36k5
RL029	-	2R2	2R2	-	-	-
RL046/48	3k3	3k3	3k3	3k3	3k3	3k3
RL051	270k	270k	270k	270k	270k	270k
RL053	6k24	6k24	6k24	6k24	6k24	6k24
RL057	26k1	27k4	56k2	47k5	56k2	56k2
RL066	-	2k2	2k2	-	-	-
RL082	59k	61k9	61k9	59k	59k	59k
RL084	-	-	-	-	-	-
RL092	4k7	4k7	4k7	4k7	4k7	4k7
RL129	2R2	2R2	2R2	2R2	2R2	2R2
RL211	6k8	6k8	6k8	6k8	6k8	6k8
RL214	-	-	-	-	-	-
ZOOM MODULE	-	-	-	-	-	-

Note : the last two numbers of the CT xxxxx part list name indicates the system voltage.
e.g. CT 19005 31 Usys 131V →
Nota: Los dos últimos números de la denominación CT xxxxx, indica la tensión Usys
e.g. CT 19005 31 Usys 131V →

X Inserted
- Not inserted

COMPLETE PCB DIAGRAM - SCHEMA PLATINE PRINCIPALE EQUIPEE - SCHALTUNG LEITERPLATTE KPL - SCHEMA PIASTRA COMPLETA - ESQUEMA PLATINA EQUIPADA



⚠ Safety Part
 When repairing, use original part only
 Pièce de sécurité
 N'utilisez que les pièces d'origine
 Sicherheitsbauteil
 Bei Ersatz nur Originalteile verwenden
 Componenti di sicurezza
 durante la riparazione usare componenti originali
 Peça de segurança
 Utilize somente peças originais

(R) MICROPROCESSOR
 RP 19100.00

(X) SCART PART
 XP 19100.00
 XP 19100.00
 XP 19100.00
 XP 19101.00
 XP 19000.00

(V) VIDEO PART
 VP 19100.00