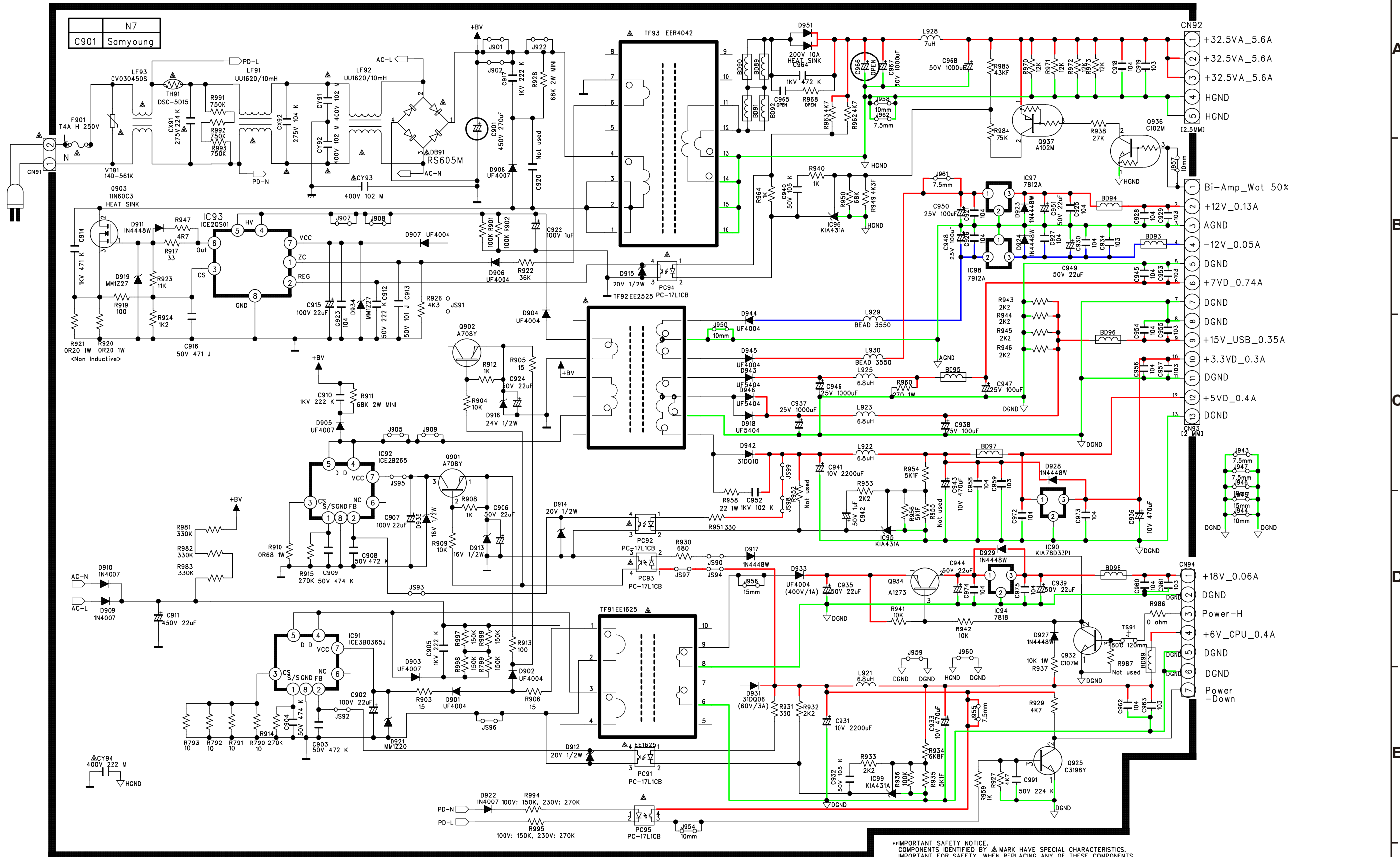


RCD-N7 SMPS SCHEMATIC DIAGRAM



IMPORTANT SAFETY NOTICE:
 COMPONENTS IDENTIFIED BY Δ MARK HAVE SPECIAL CHARACTERISTICS. IMPORTANT FOR SAFETY, WHEN REPLACING ANY OF THESE COMPONENTS, USE ONLY MANUFACTURER'S SPECIFIED PARTS.
 *THE UNIT OF RESISTANCE IS OHM.
 K=1000 OHM, M=1000 KOHM
 *THE UNIT OF CAPACITANCE IS MICROFARAD (μ F)
 pF=10⁻⁶ μ F
 *THIS SCHEMATIC DIAGRAM MAY MODIFIED AT ANY TIME WITH THE IMPROVEMENT OF PERFORMANCE

— GND — POWER + — POWER -