



# MACCHINE DA CAFFE' AUTOMATICA AUTOMATIC COFFEE MACHINES

DE LONGHI ECAM23210  
(JP)

---

## DATI TECNICI / TECHNICAL DATA

---

Voltaggio / Voltage / Spannung / Voltage / Voltaje	V / Hz 100 / 50 - 60
--	----------------------

---

Max. potenza assorbita / Max. input power	W 1450
---	--------

---

## SEZIONE CAFFE' / COFFEE SECTION

---

Sonda termica / Temperature probe	°C 98 (Caffè / Acqua calda) (Coffee / Hot water)
-----------------------------------	---

---

Fusibile termico TCO / Thermal fuseTCO	°C 192
--	--------

---

Resistenza riscaldamento	W 1200
--------------------------	--------

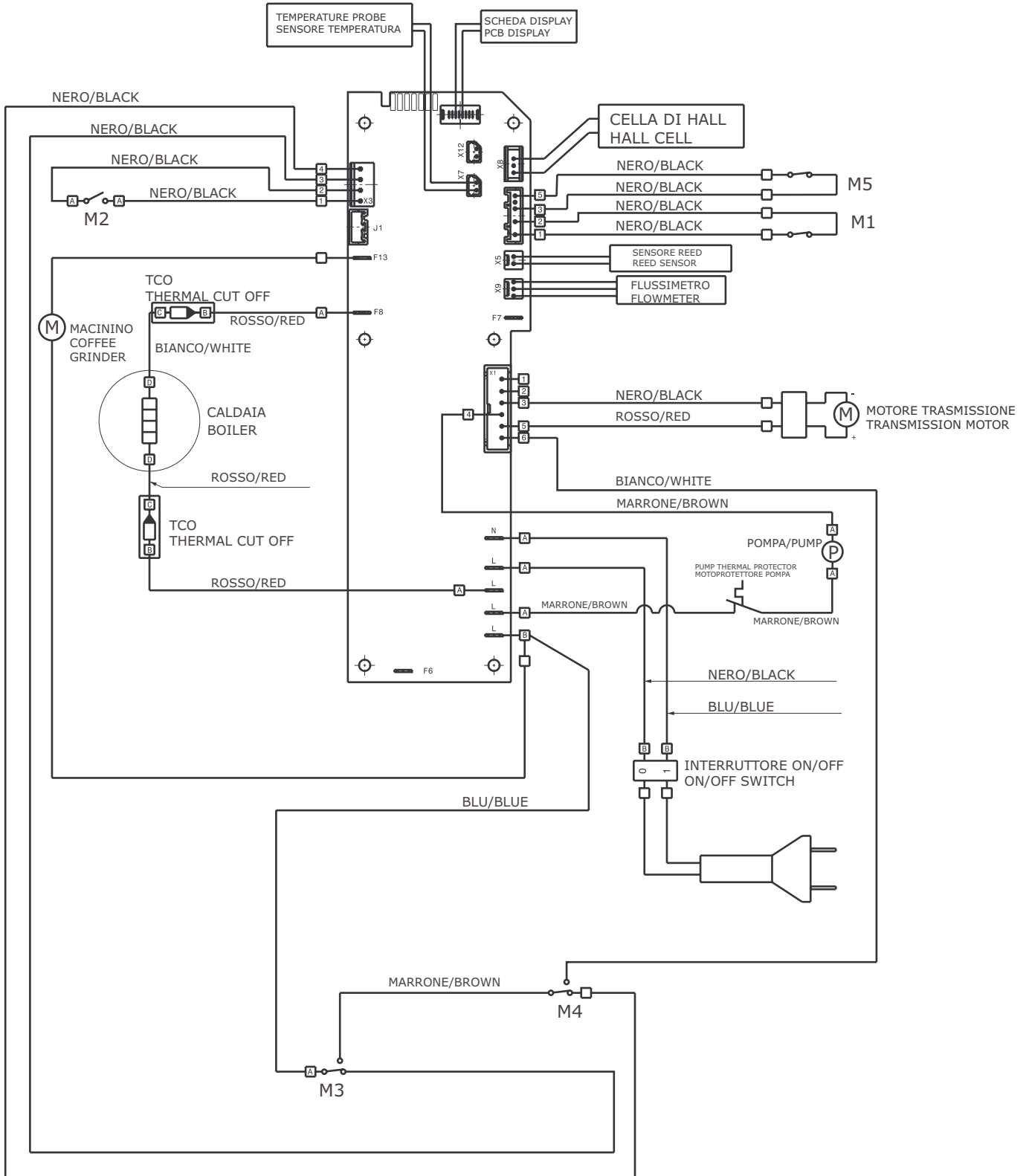
---

Pompa / Pump	TYPE / W ULKA EP5W / 50
--------------	-------------------------

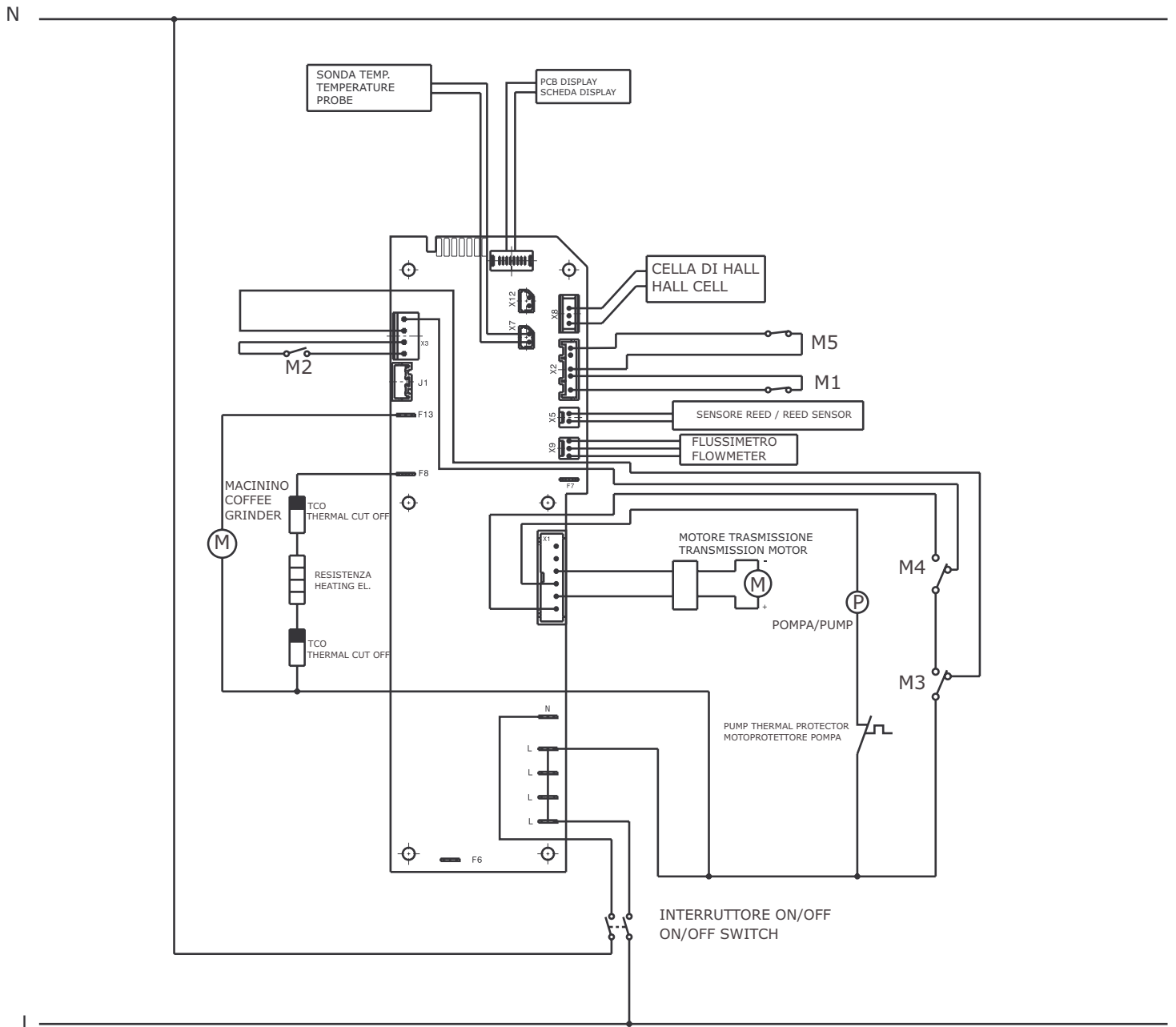
---

# SCHEMA ELETTRICO / ELECTRICAL DIAGRAM

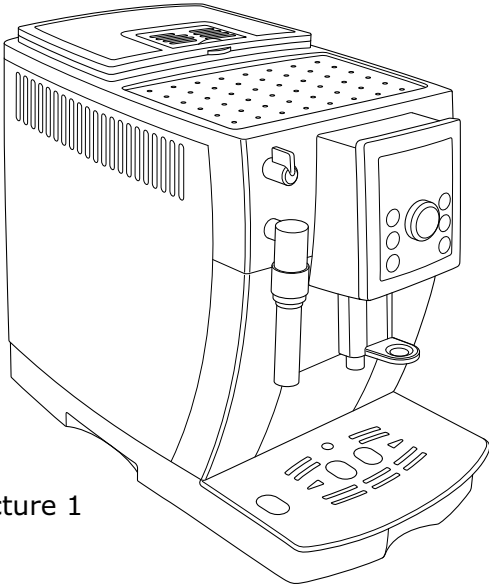
LEGENDA MICRO / MICROSWITCHES	
M1	Infusore alto / Infuser top position
M2	Infusore basso / Infuser bottom position
M3	Cassetto fondi / Coffee grounds container
M4	Tanica / Tank
M5	Rubinetto / Tap



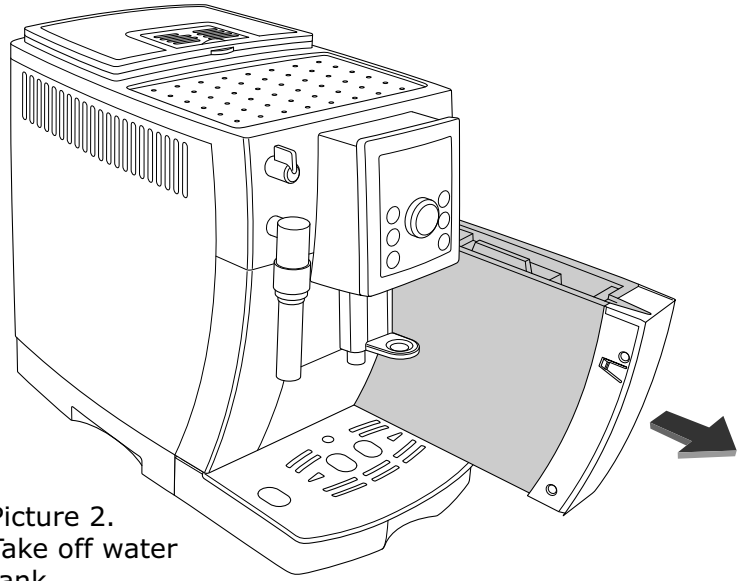
# SCHEMA ELETTRICO / ELECTRICAL DIAGRAM



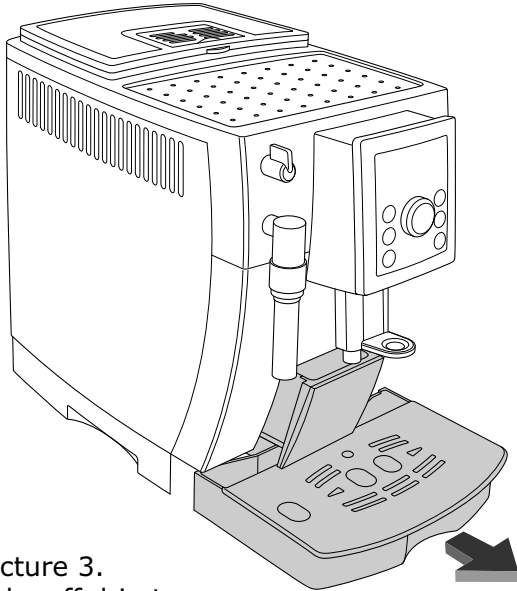
# ACCESSIBILITY



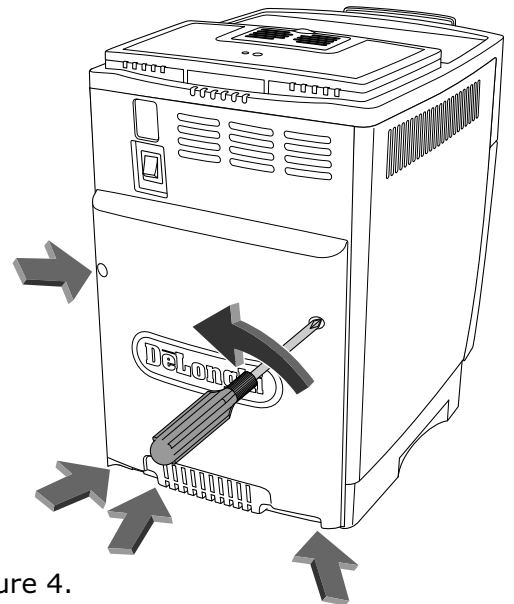
Picture 1



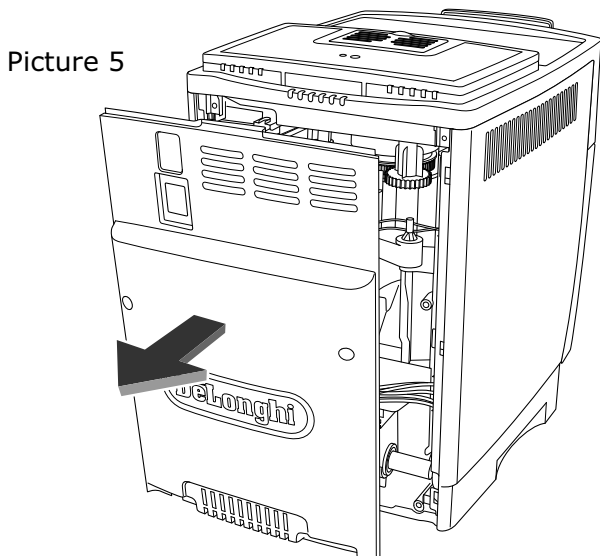
Picture 2.  
Take off water tank



Picture 3.  
Take off drip tray  
and waste container

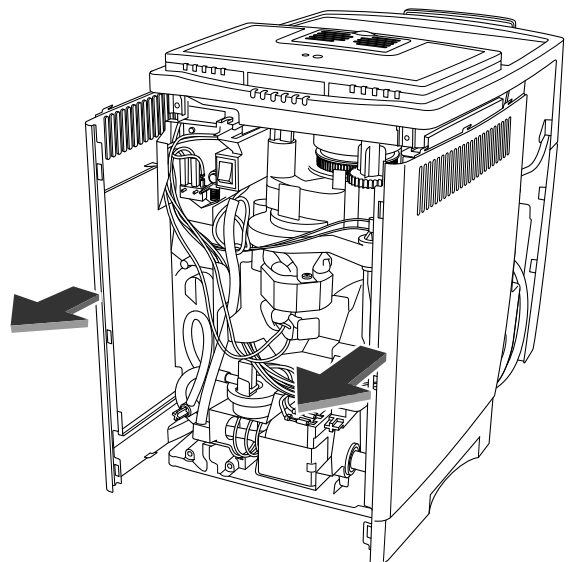


Picture 4.  
Unscrew the 5 indicated screws  
(Torx T20)



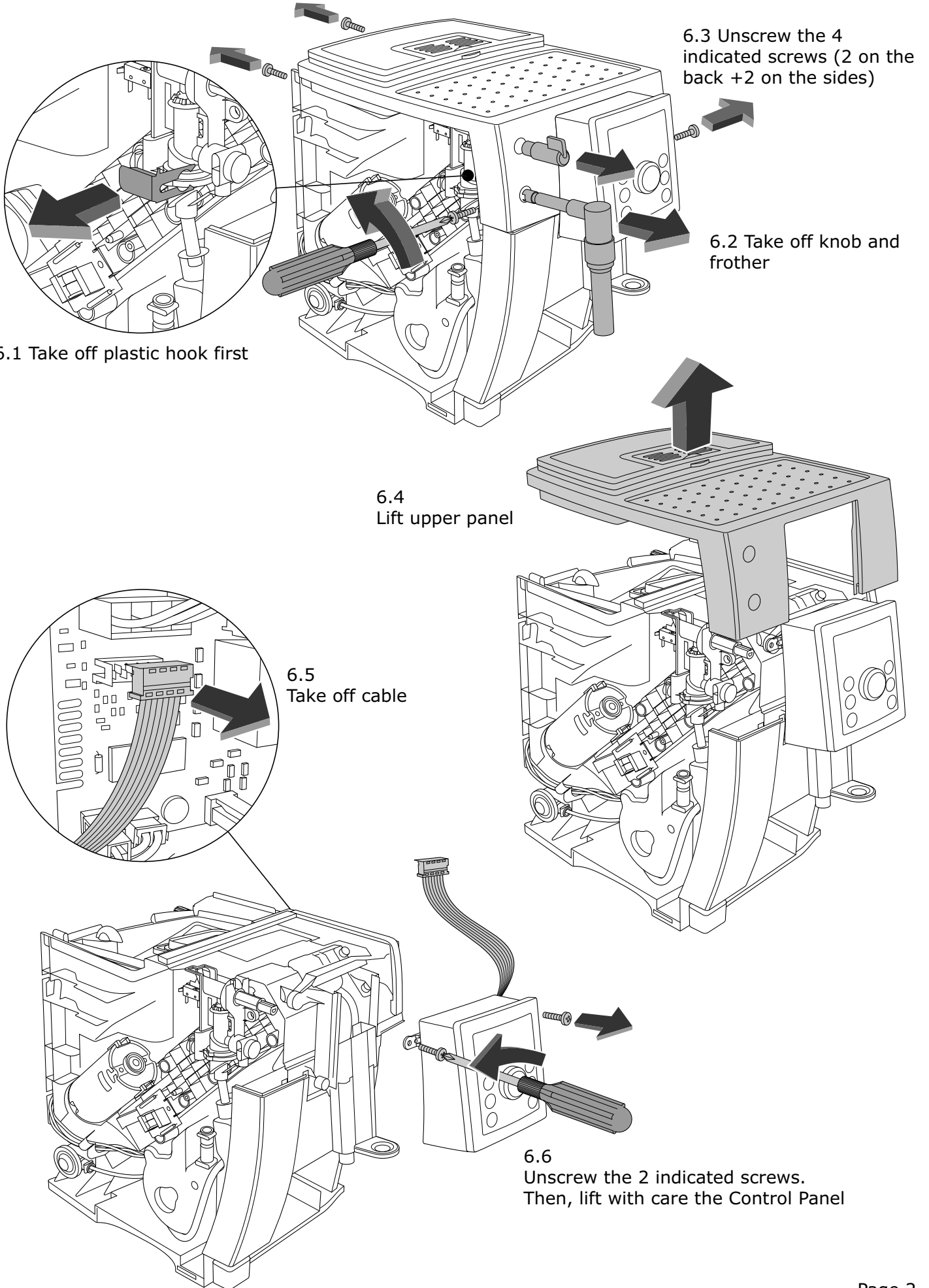
Picture 5

5.1 Remove back panel

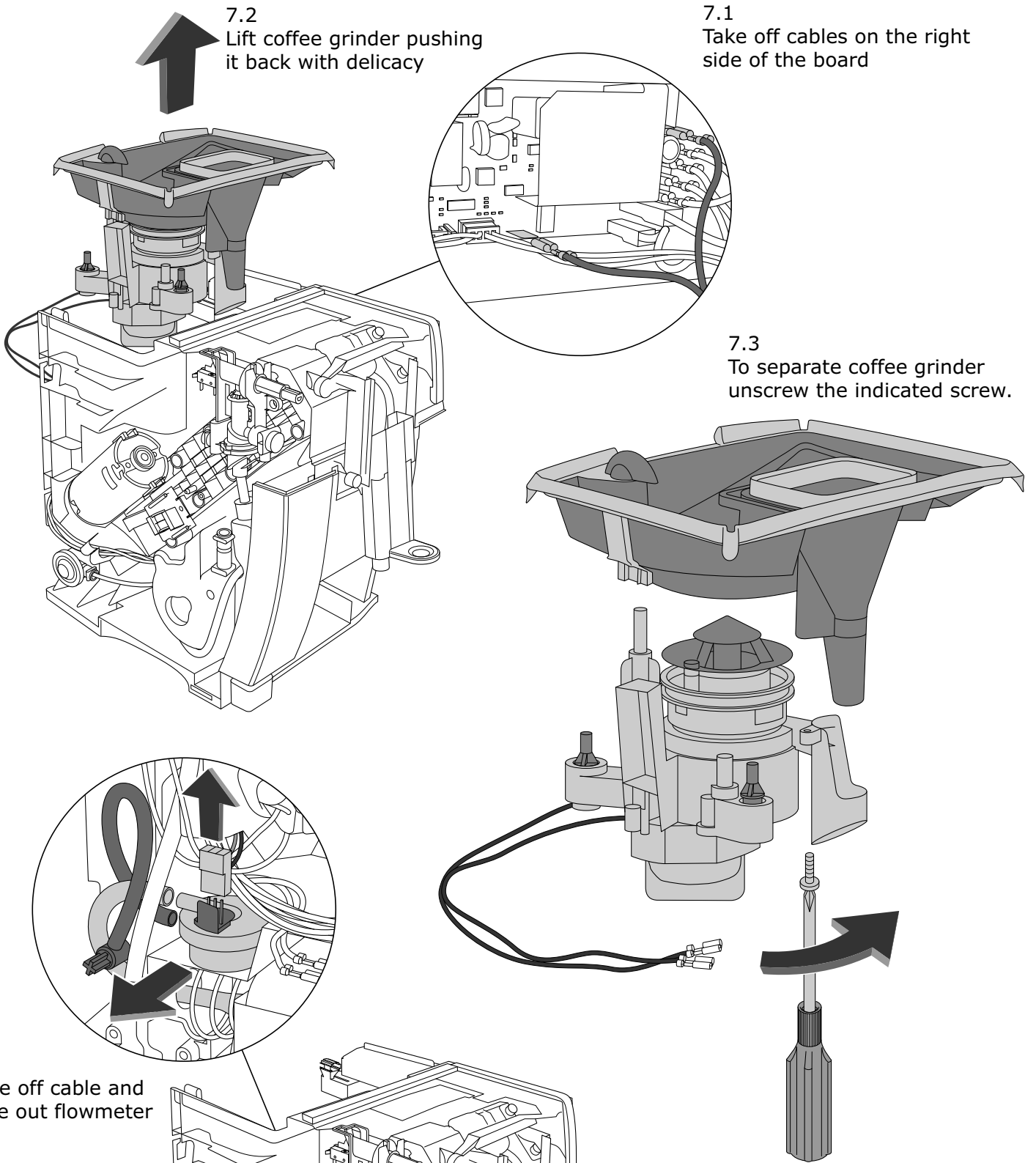


5.2 Unhook side panels

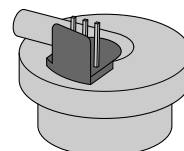
Picture 6 - **TO REMOVE CONTROL PANEL**



**Picture 7 - TO REMOVE COFFEE GRINDER**

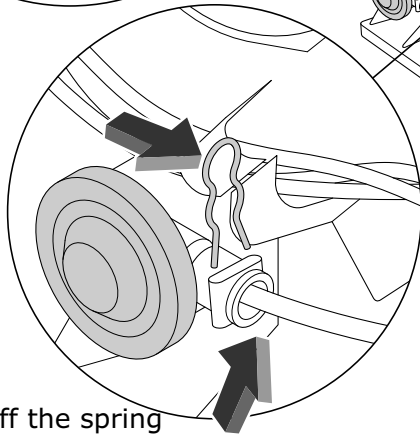
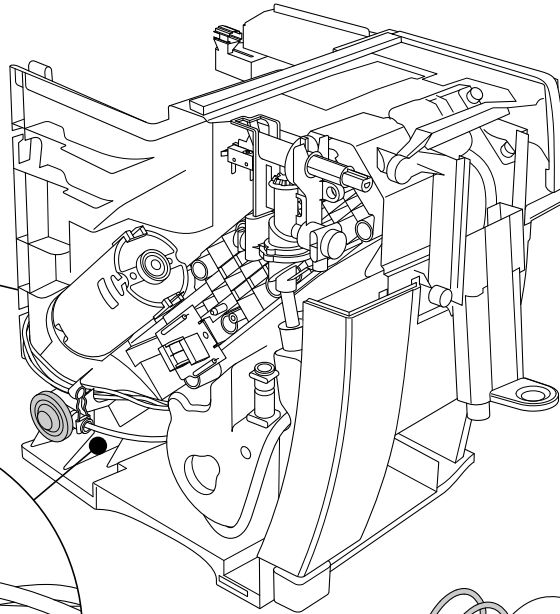
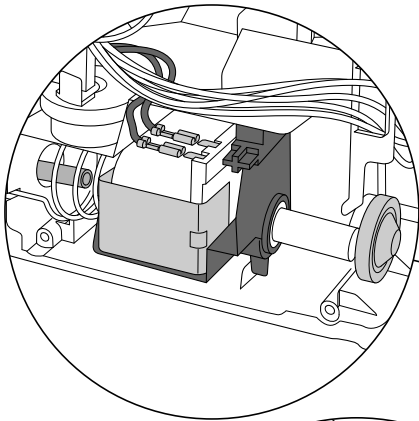


**Picture 8 - TO REMOVE FLOWMETER**

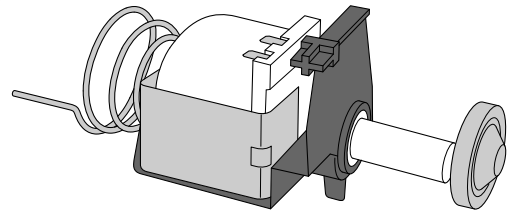


9.2  
Take off pump

Picture 9 - **TO REMOVE PUMP**

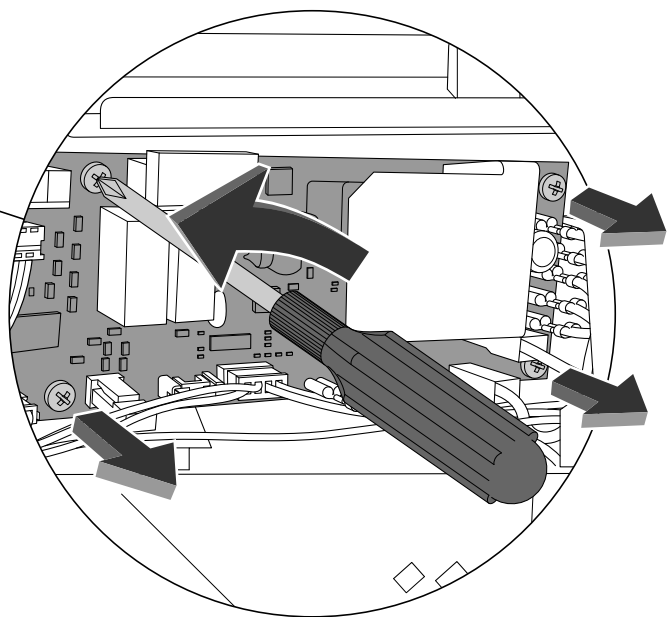
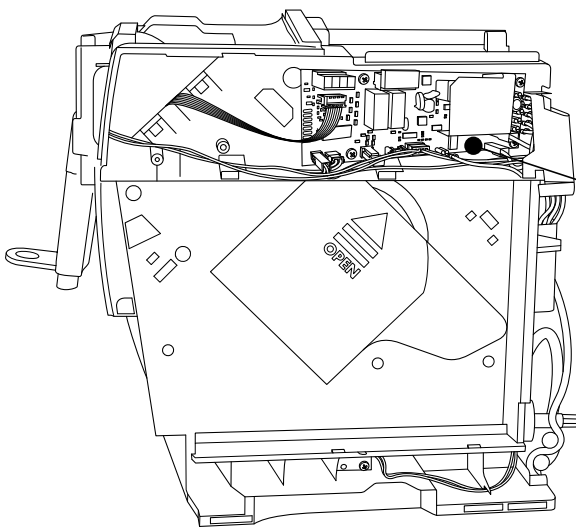


9.1  
Take off the spring  
and then the tube  
**Attention:** Some water could come out  
from the tube, since the water circuit is  
emptying out



9.3  
**Attention:** After you have taken off cables,  
you will have to take off pump thermal protector.  
Since it is glued, you will have to use a certain strength.  
Remember to glue it again when you will reassemble it

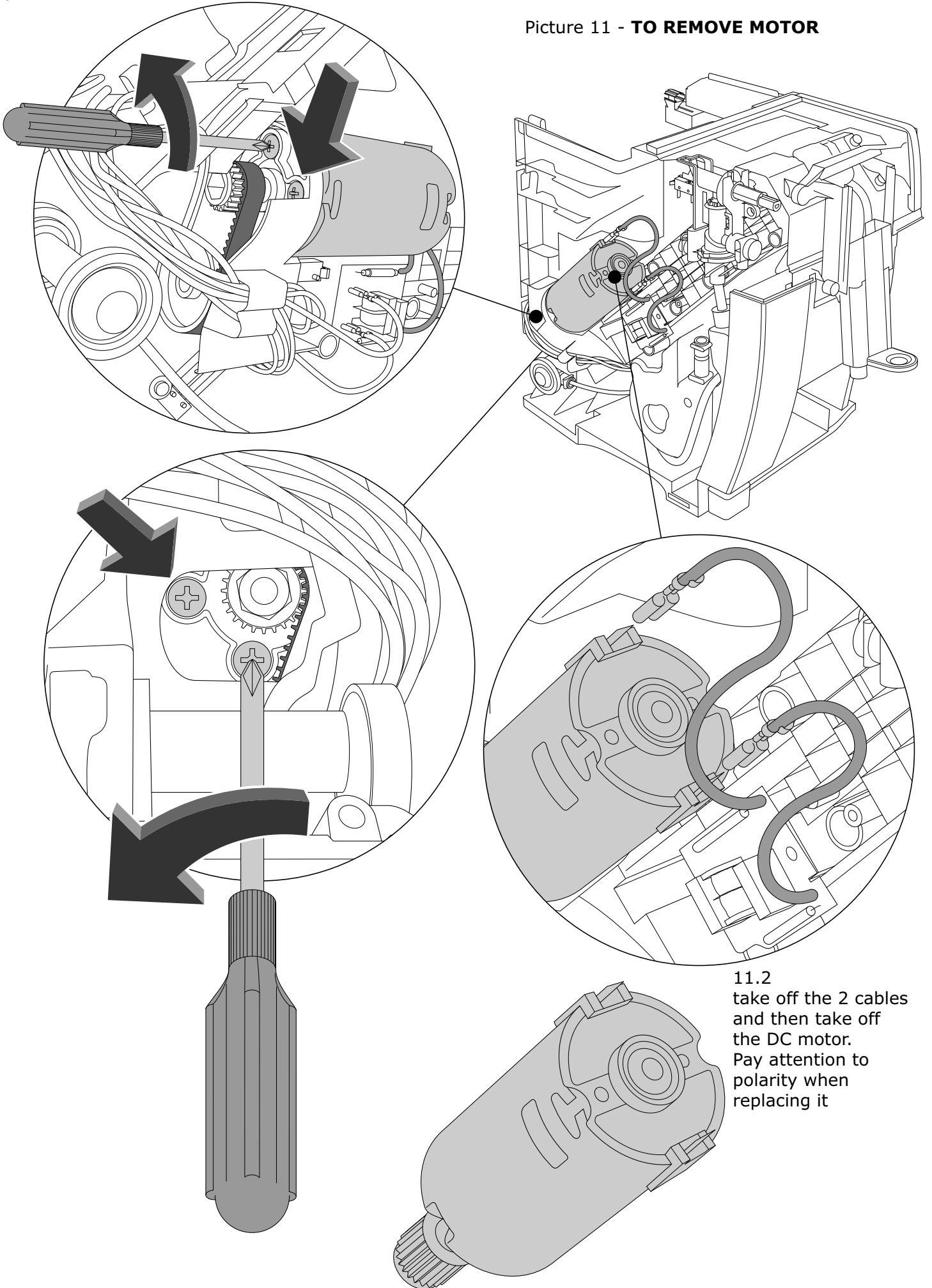
Picture 10 - **TO REMOVE BOARD**



10.1  
Take off the 4 indicated screws. After you have taken off cables, take out the board

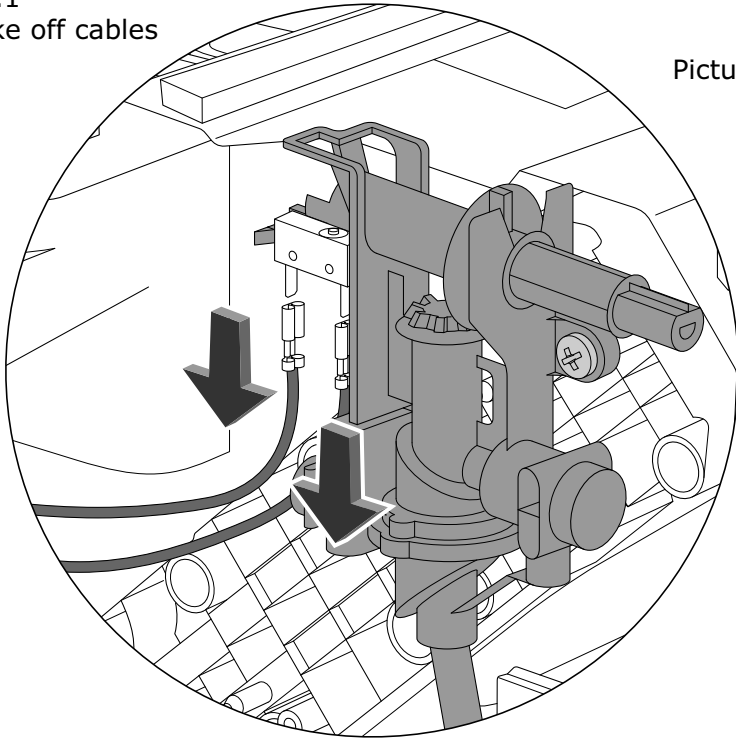
11.1  
Unscrew the 4 indicated screw  
you find on the rear of the motor

Picture 11 - **TO REMOVE MOTOR**

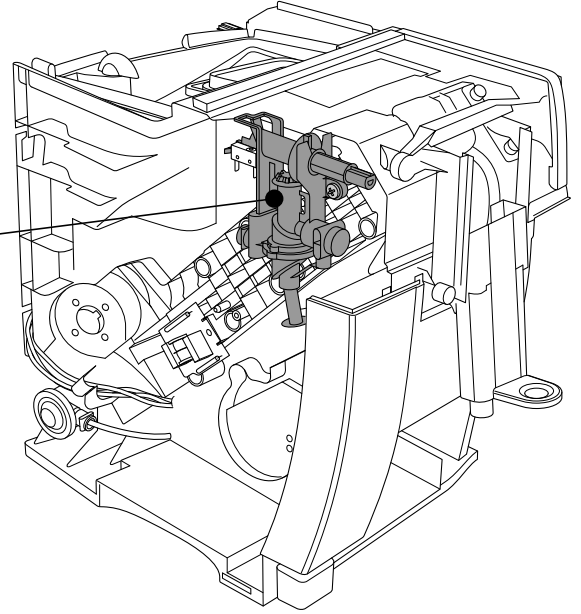




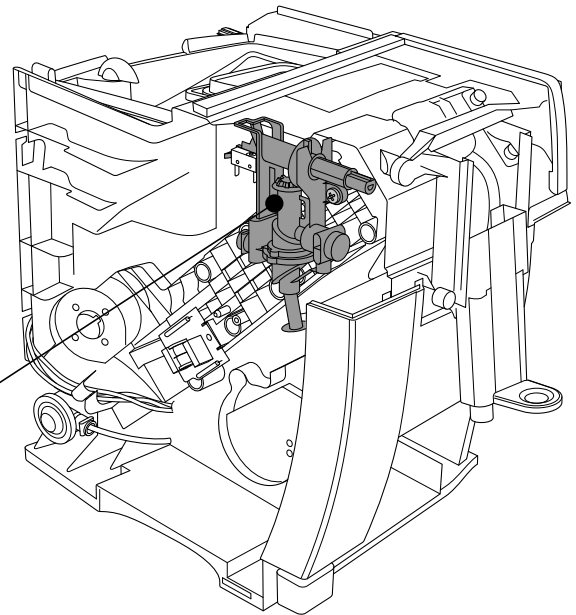
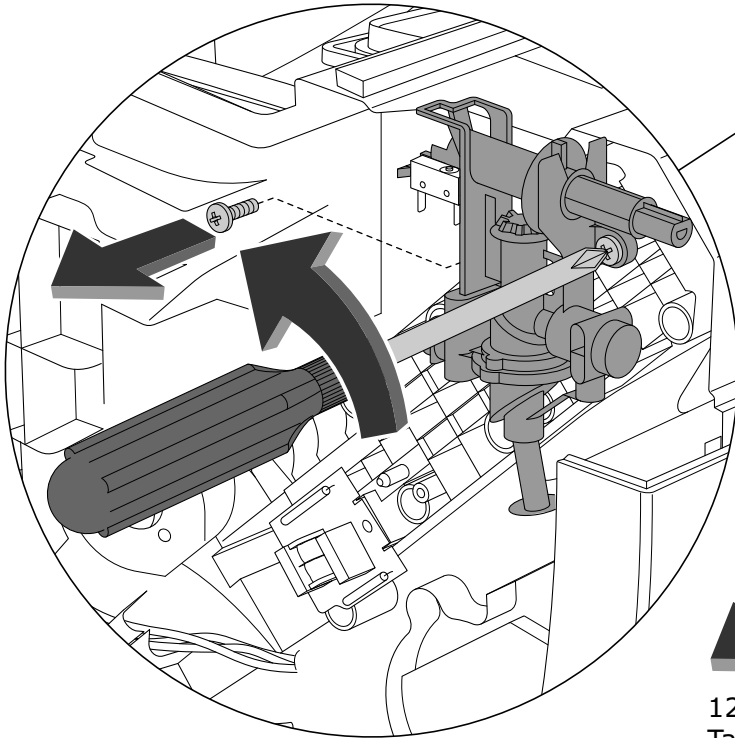
12.1  
Take off cables



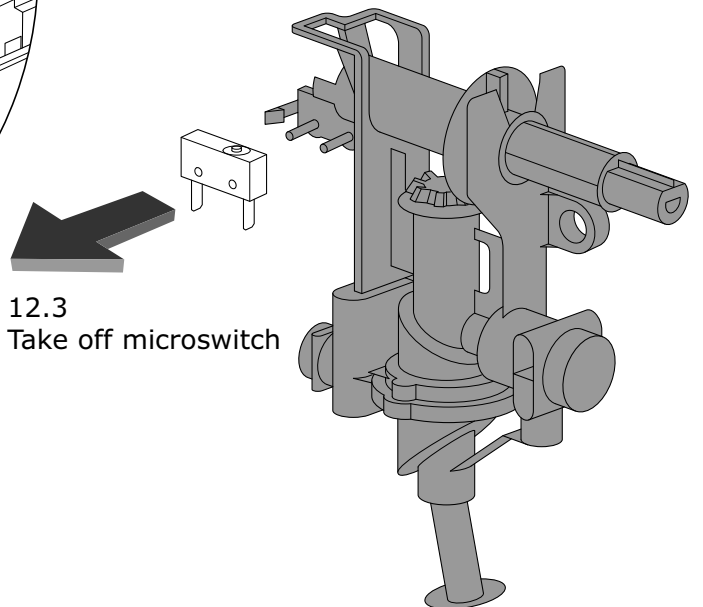
Picture 12 - **TO REMOVE TAP STEAM/HOT WATER**



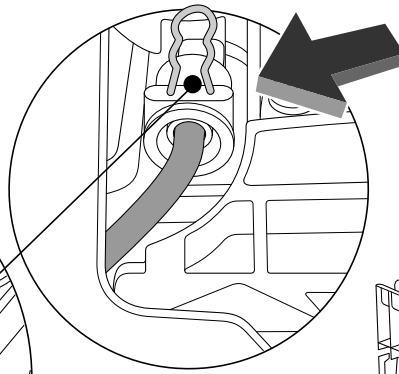
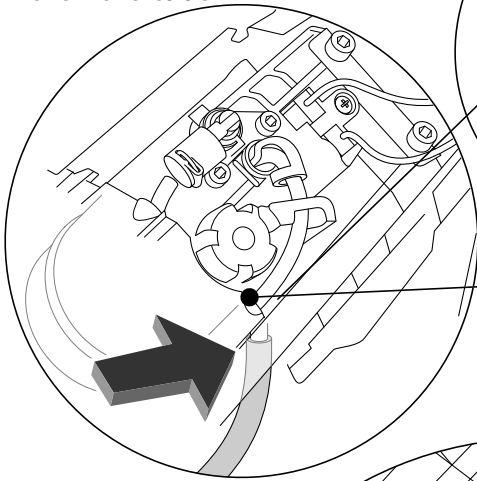
12.2  
Unscrew the 2 indicated screws



12.3  
Take off microswitch

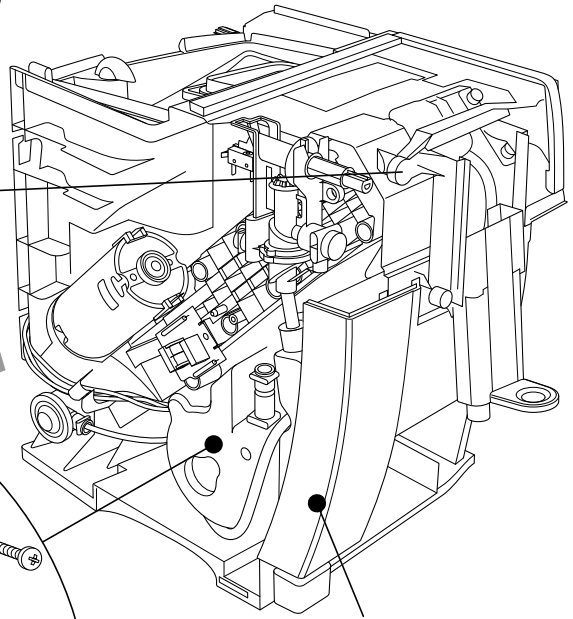
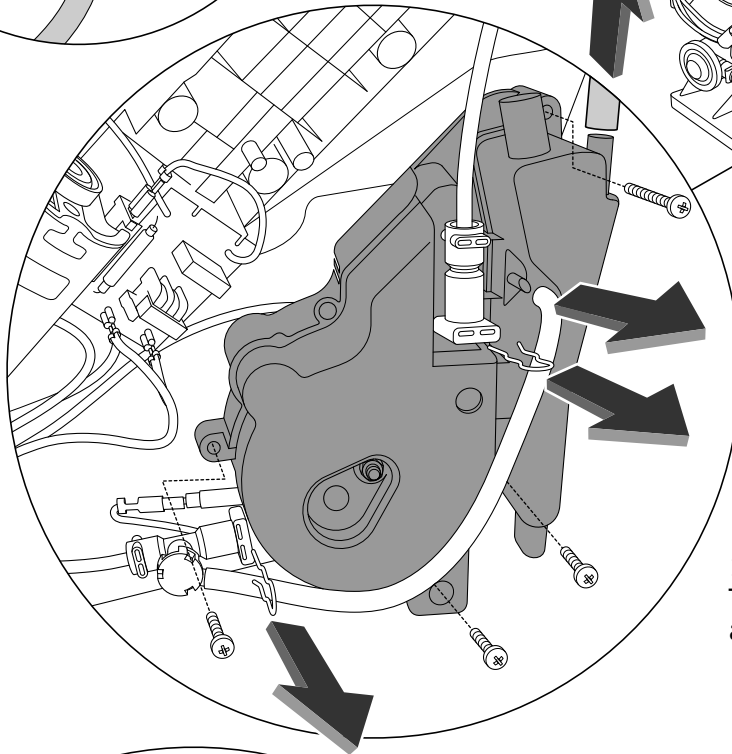


13.3  
Take off the spring  
indicated by the arrow and  
then the tube



Picture 13 - **TO REMOVE BOILER**

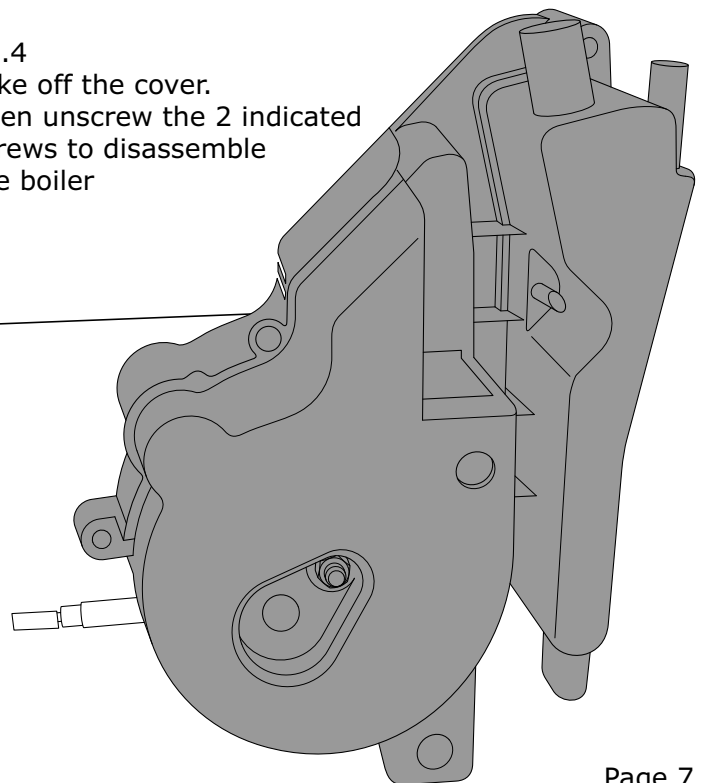
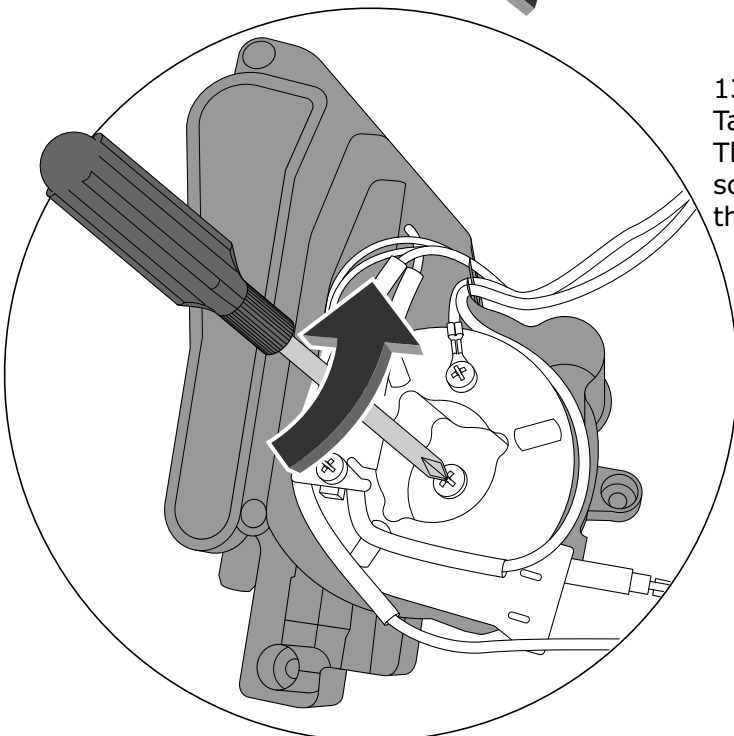
13.2  
Take off the  
tube



**Attention:** to take off the boiler,  
push with delicacy the plastic panel

13.1  
Take off the indicated 2 springs  
and the 4 screws.

13.4  
Take off the cover.  
Then unscrew the 2 indicated  
screws to disassemble  
the boiler



Picture14 - **TO REMOVE INFUSER KIT**

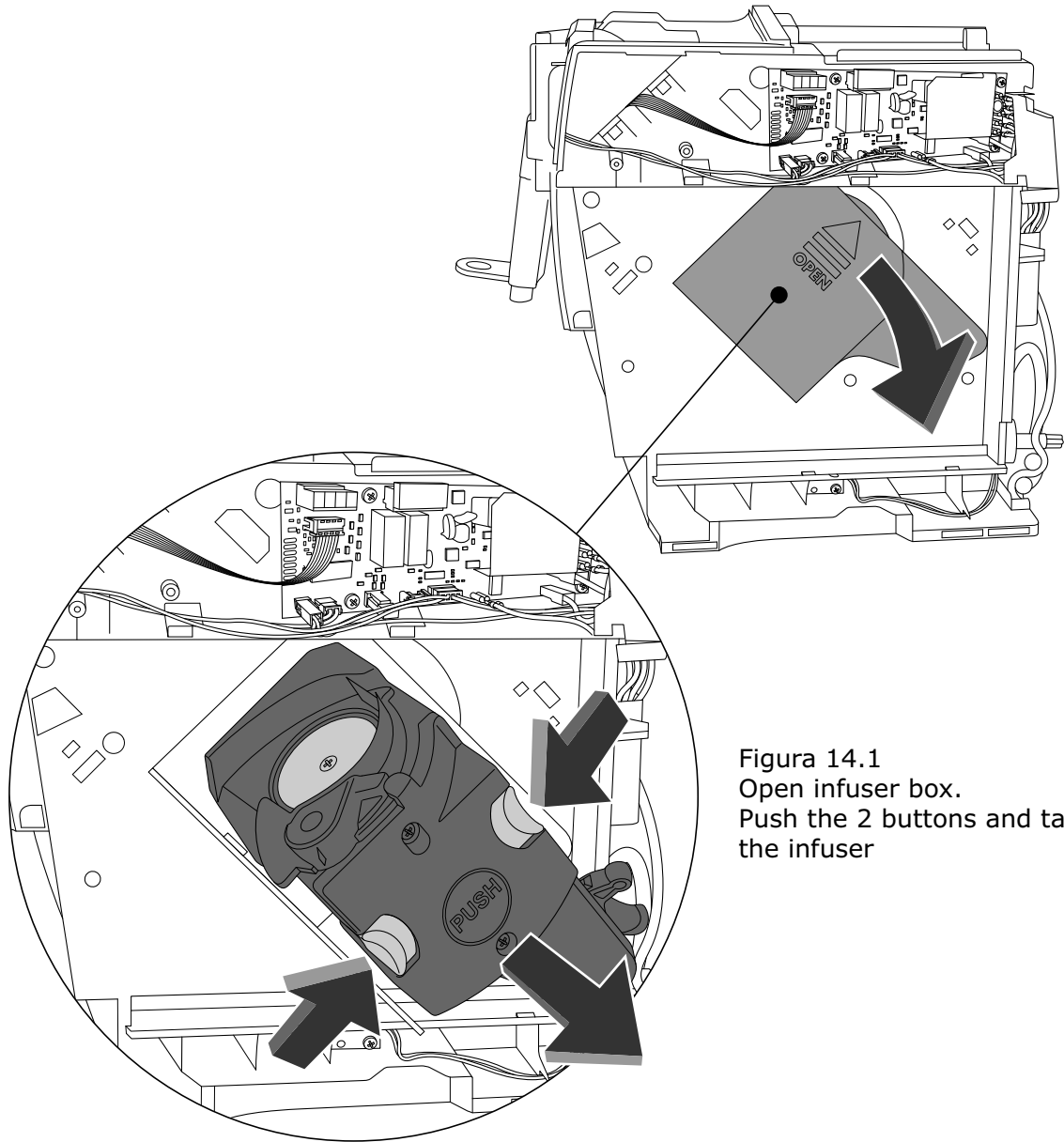
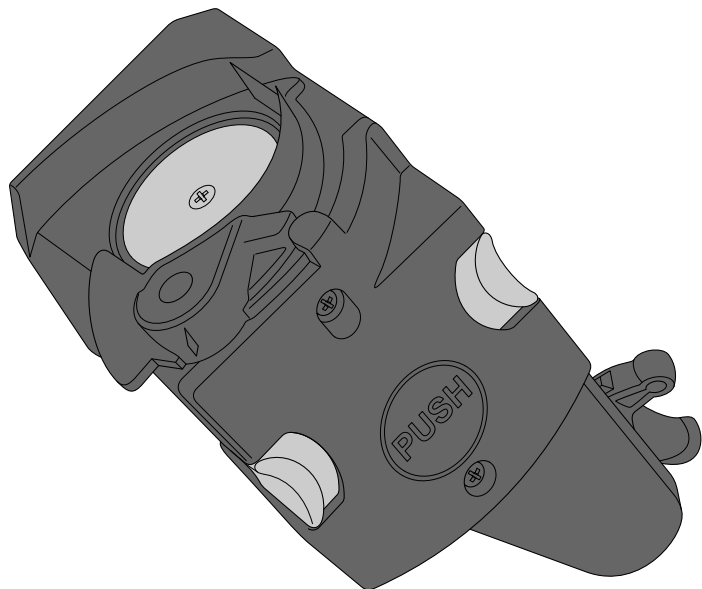
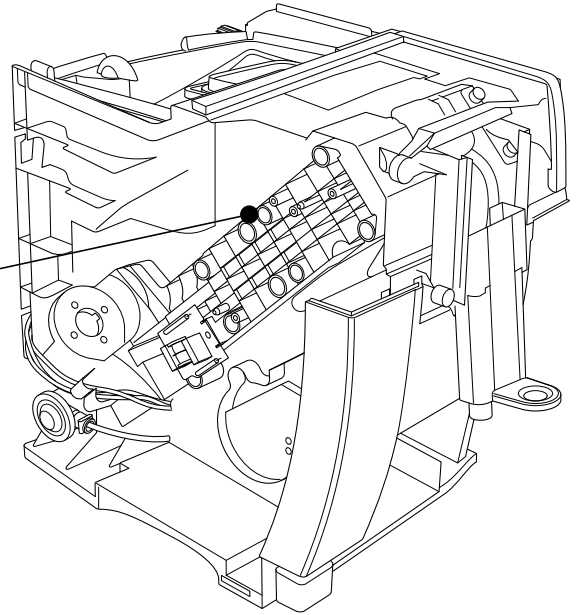
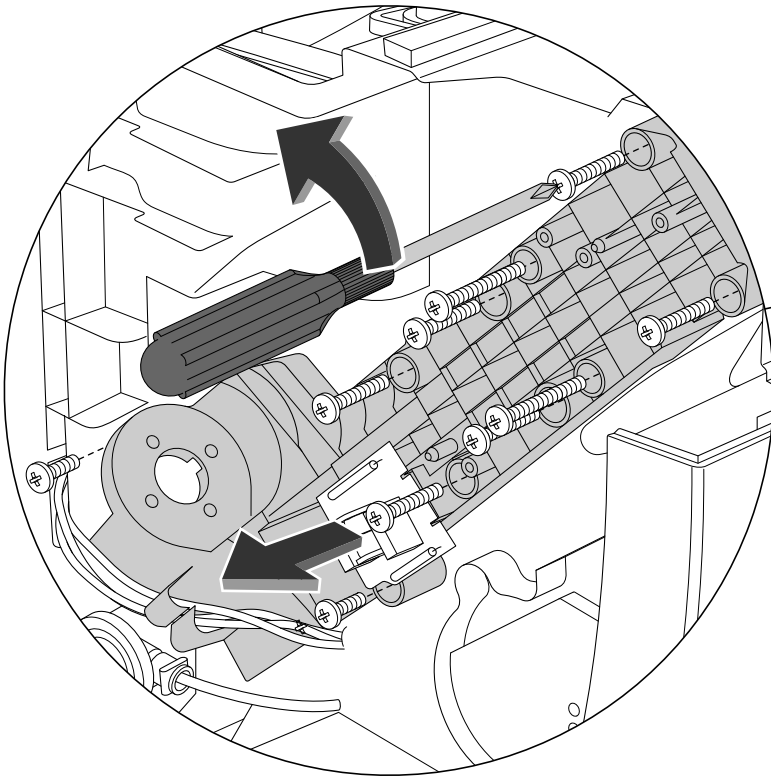


Figura 14.1  
Open infuser box.  
Push the 2 buttons and take out  
the infuser

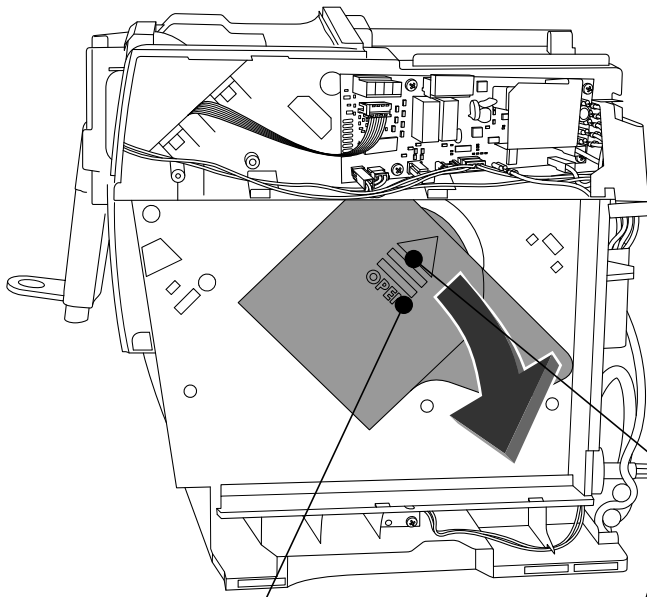


15.1  
Unscrew the 10 indicated screws

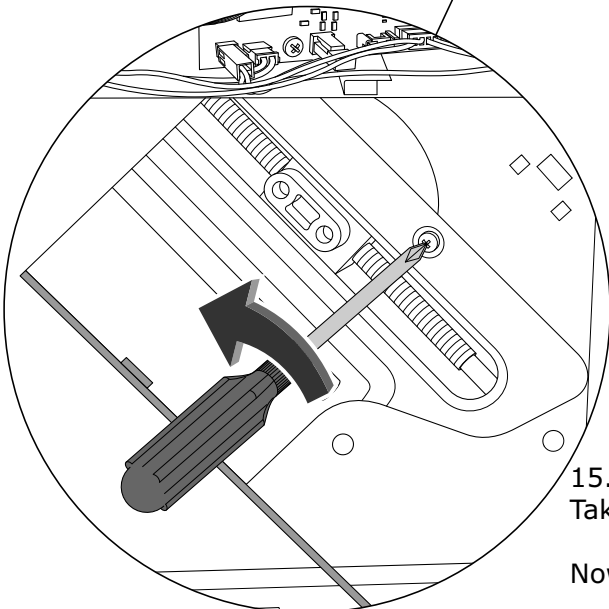
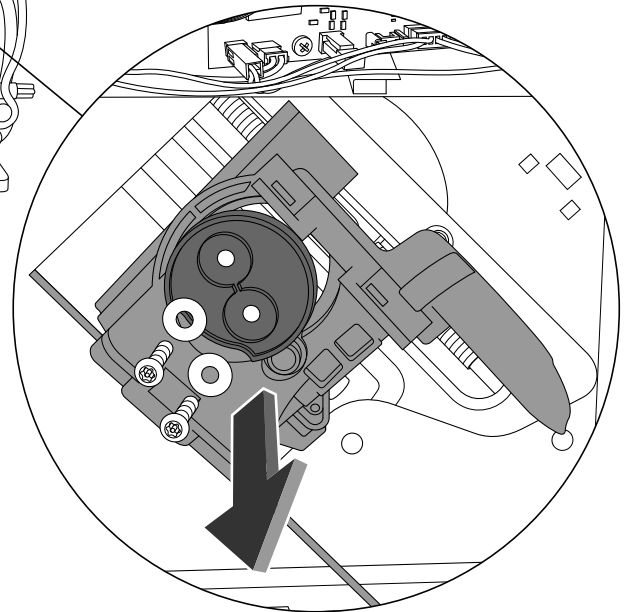
Picture 15 - **TO REMOVE TRANSMISSION KIT**



15.2  
Open infuser box



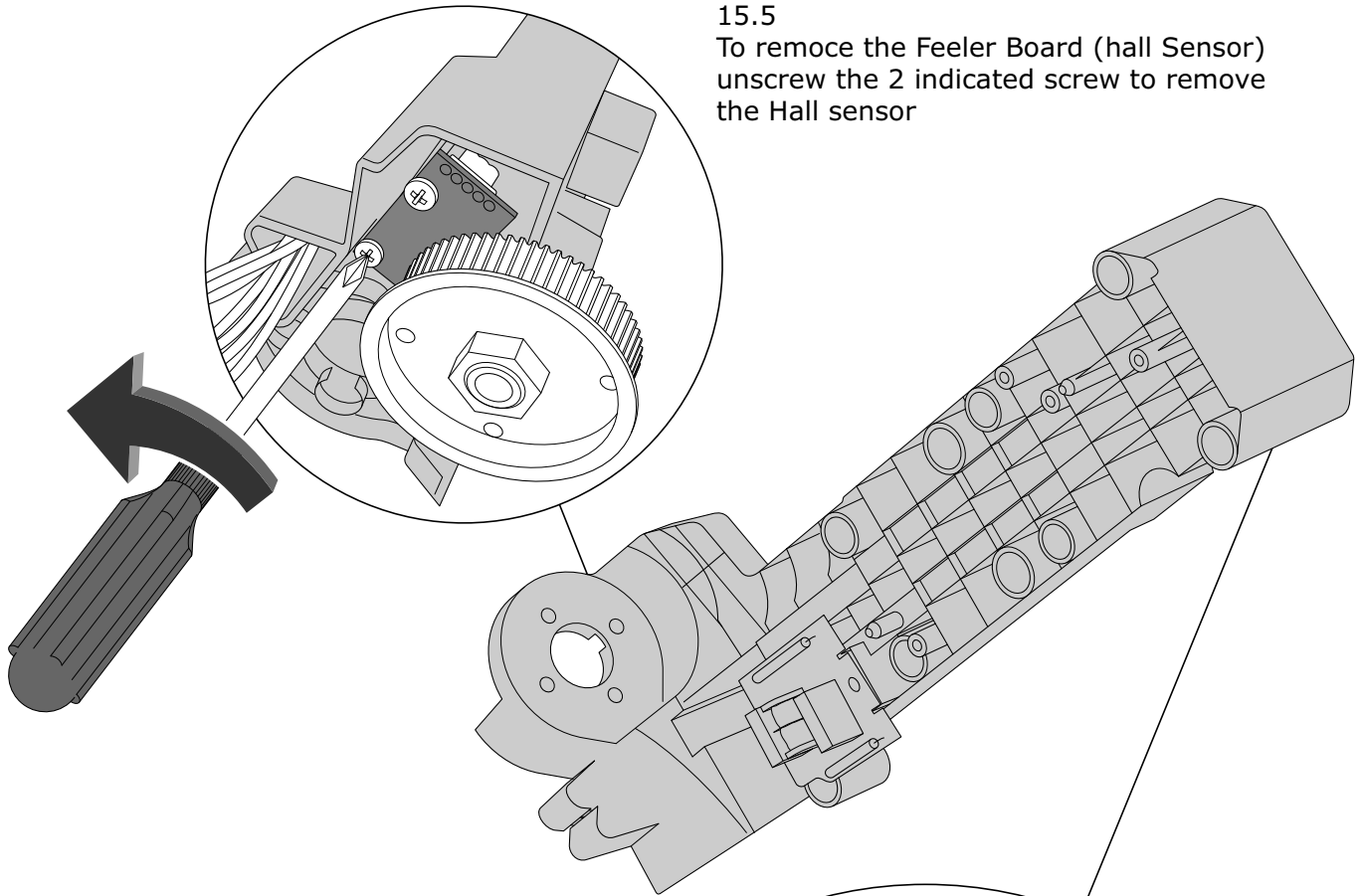
15.3  
Unscrew the 2 indicated screws  
(Torx T20) and remove the slider



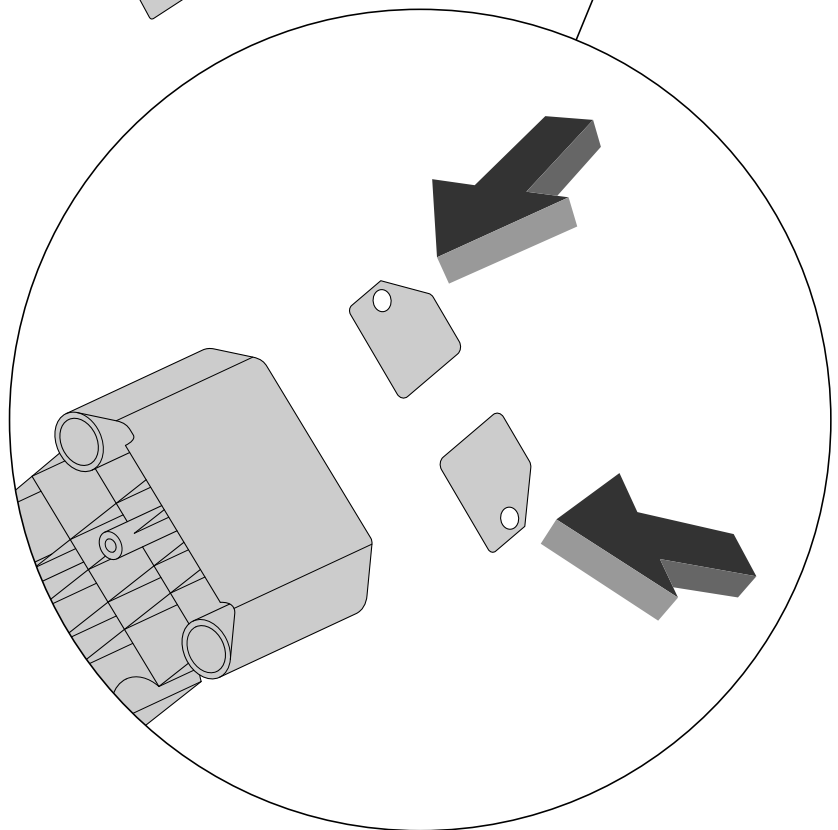
15.4  
Take off the indicated screw

Now the TRASMISSION KIT is free and can be removed

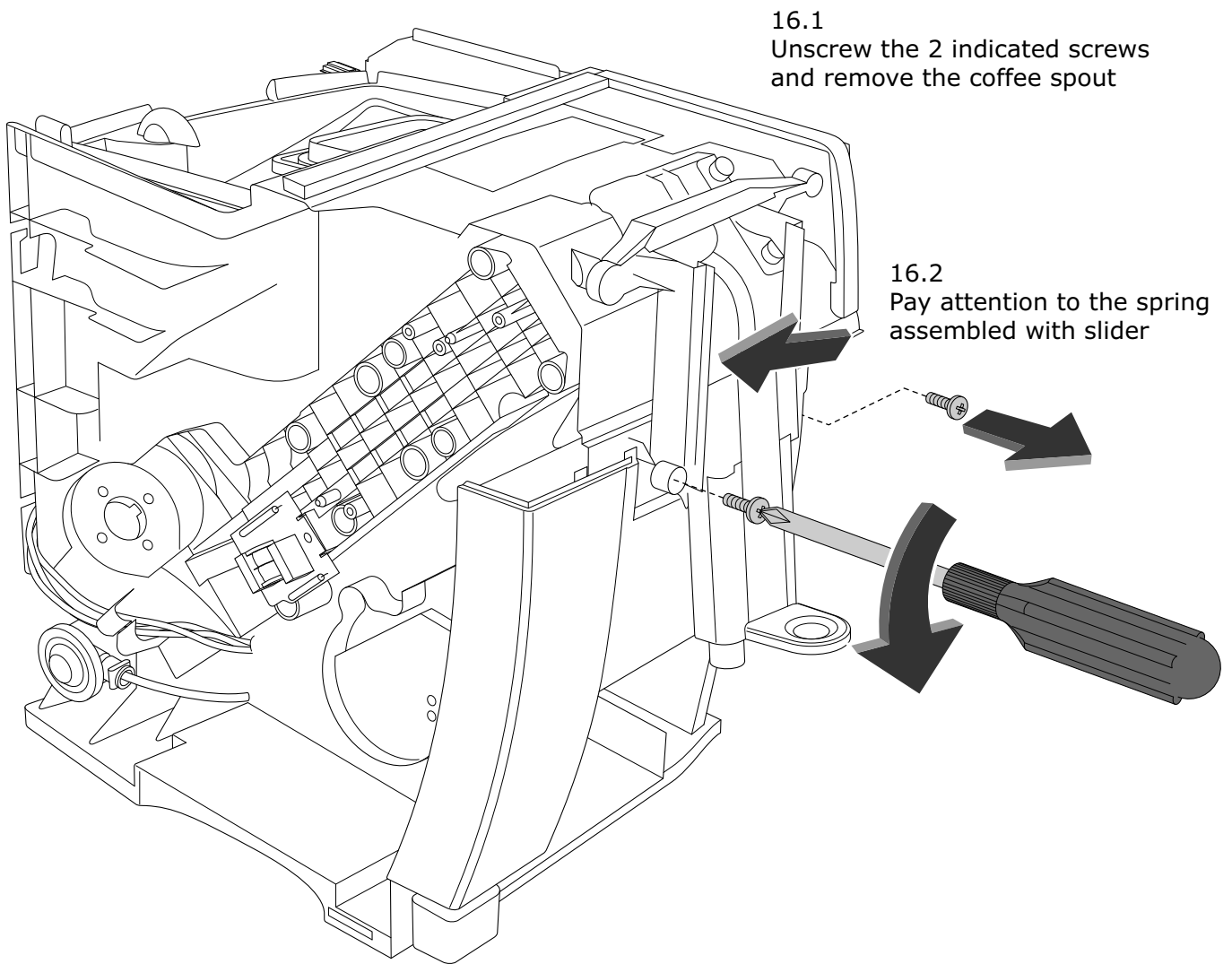
15.5  
To remove the Feeler Board (hall Sensor)  
unscrew the 2 indicated screw to remove  
the Hall sensor



15.6  
Pay attention, when you take off the  
plastic component, to the 2 indicated  
metal spacers  
(**ATTENTION:** about metal  
spacers see Technical Info  
IT0181)



Picture 16 - **TO REMOVE COFFEE SPOUT**



Picture 17 - **TO REMOVE VALVE ASSEMBLY**  
(see Technical Info IT0181)

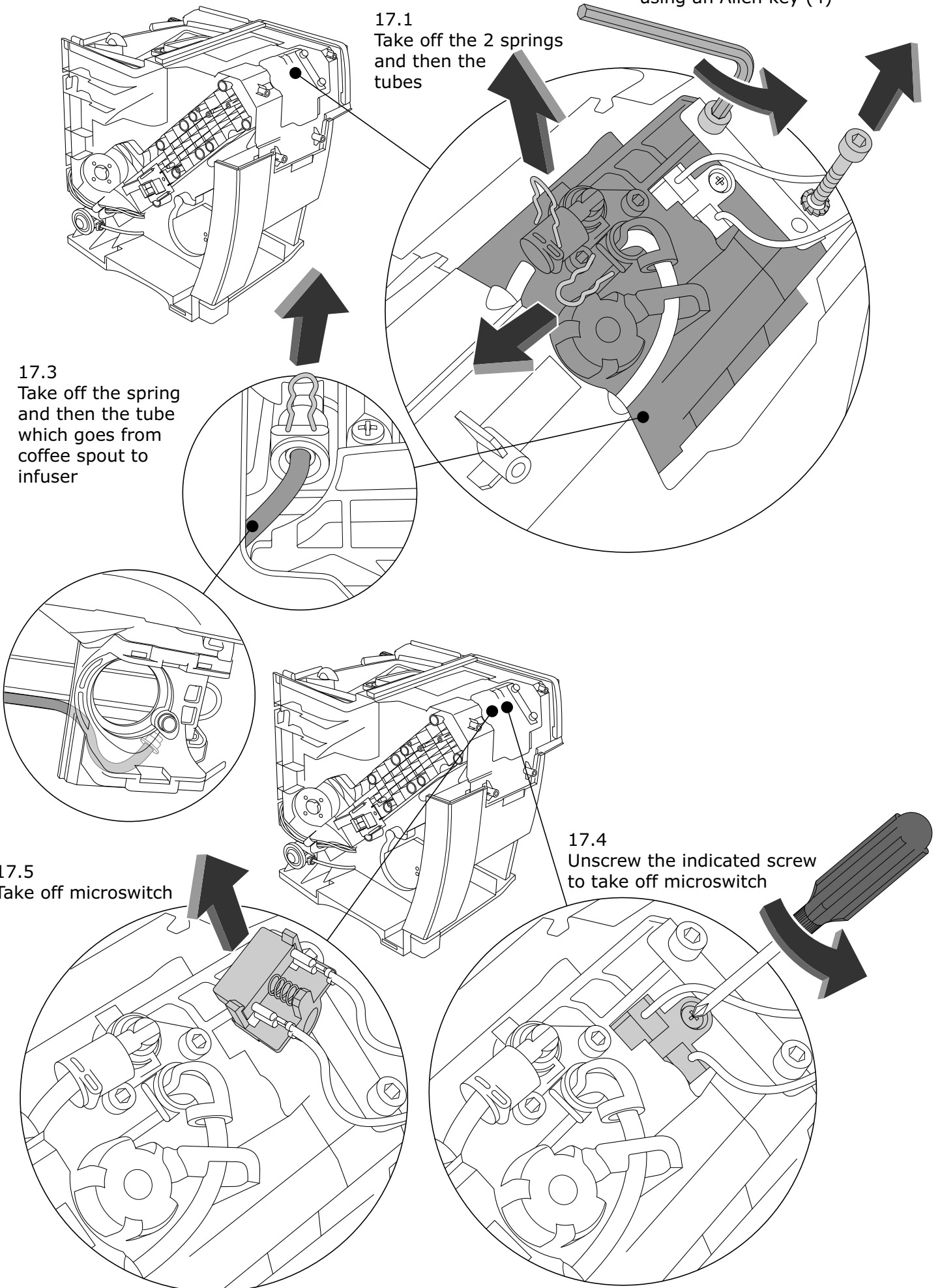
17.2  
Unscrew the 2 indicated screws  
using an Allen key (4)

17.1  
Take off the 2 springs  
and then the  
tubes

17.3  
Take off the spring  
and then the tube  
which goes from  
coffee spout to  
infuser

17.5  
Take off microswitch

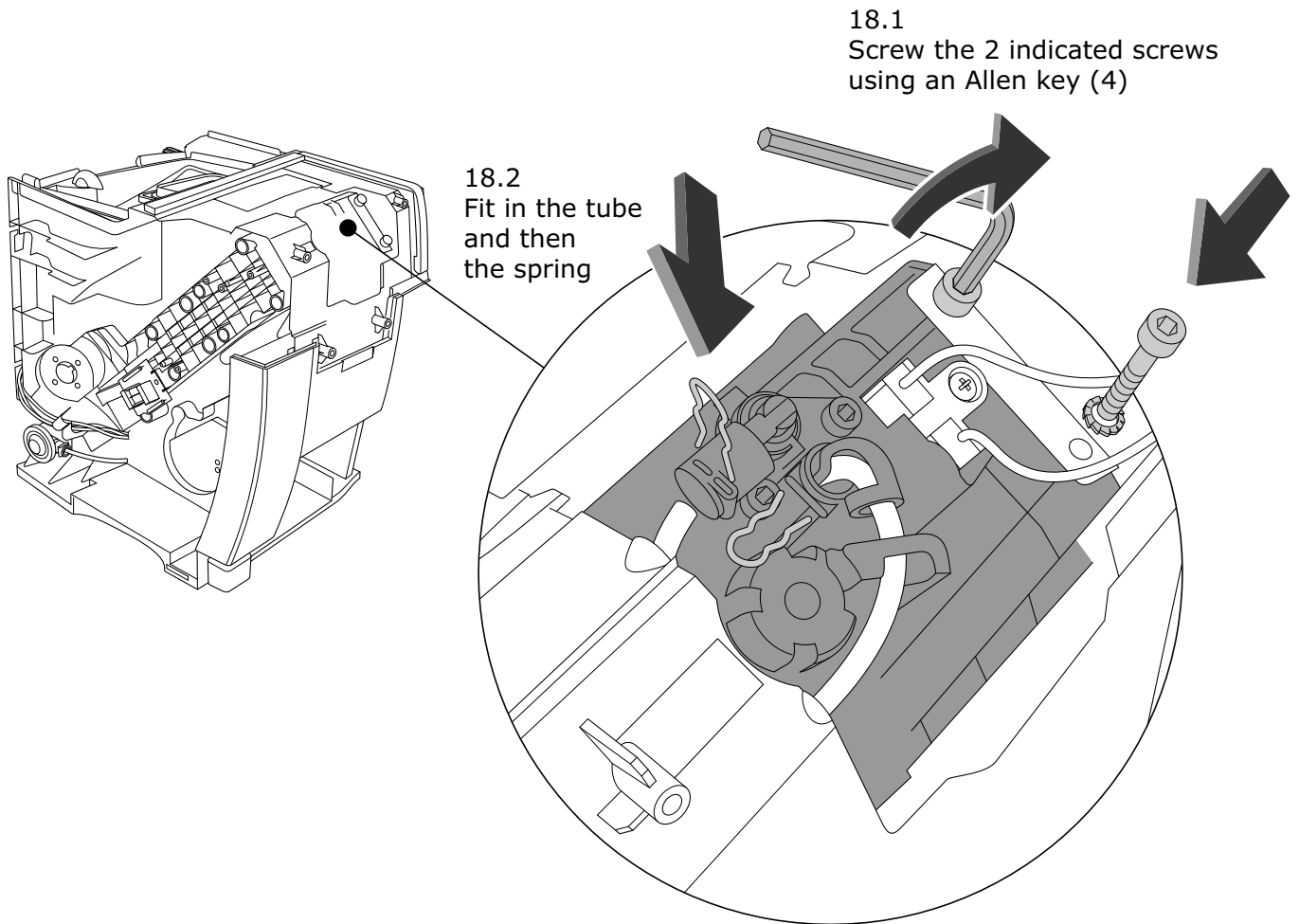
17.4  
Unscrew the indicated screw  
to take off microswitch



**Picture 18 - HOW TO ALIGN VALVE**

Lift the infuser up to touch the valve, without pushing with strength: it has only to be aligned to the valve.

Once you aligned it, fix the 2 screws (pic. 18.2) using an Allen key.



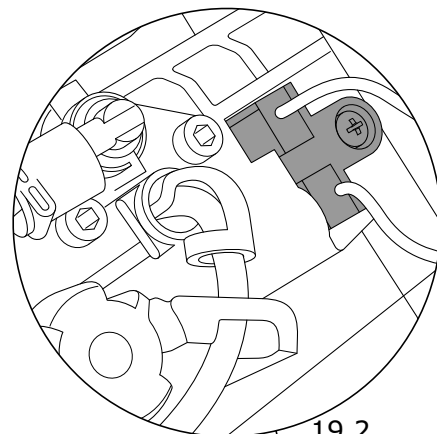
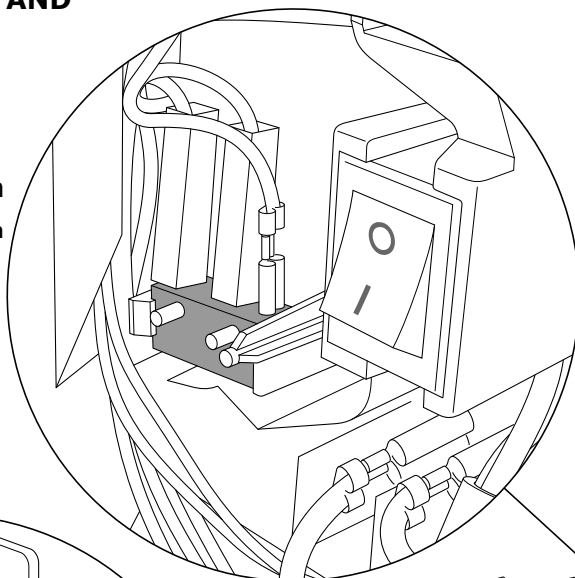


**Picture 19 - MICROSWITCH AND WATER REED POSITION**

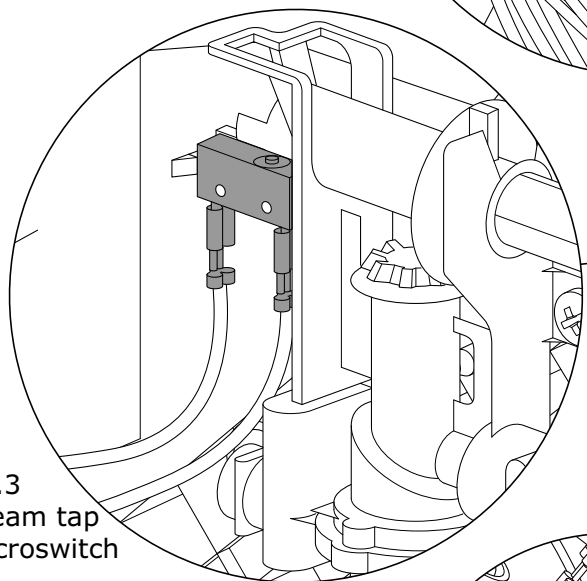
19.1  
Water Tank  
microswitch

**ATTENTION:** please, pay attention to never bypass microswitch. If you should do it infuser motor would be on

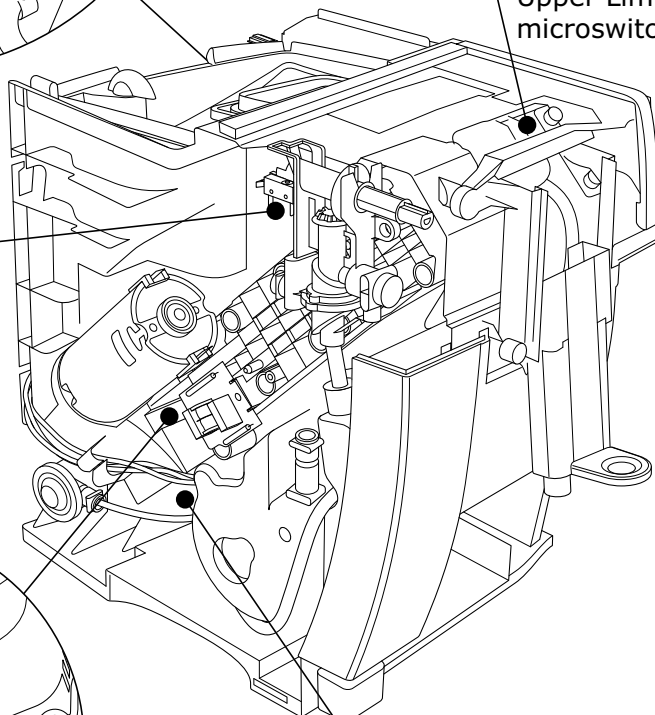
**ATTENTION:** Water Tank led, Waste container led and Steam tap led blink when micro are open



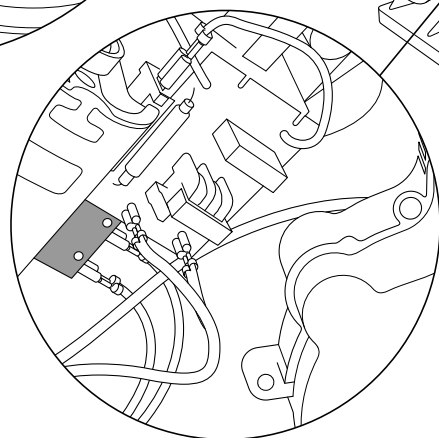
19.2  
Infuser  
Upper Limit  
microswitch



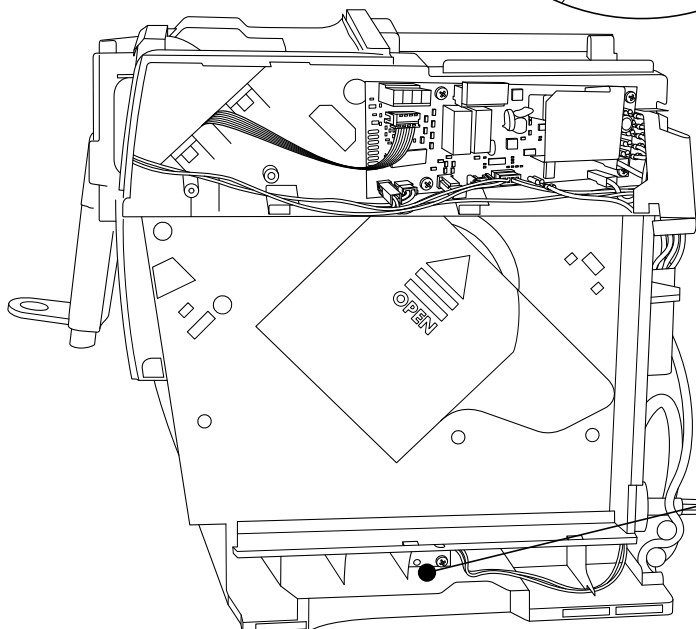
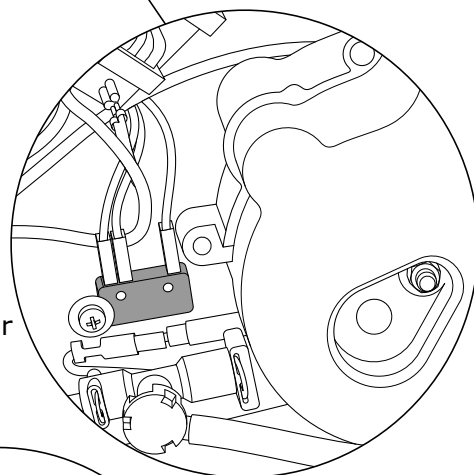
19.3  
Steam tap  
microswitch



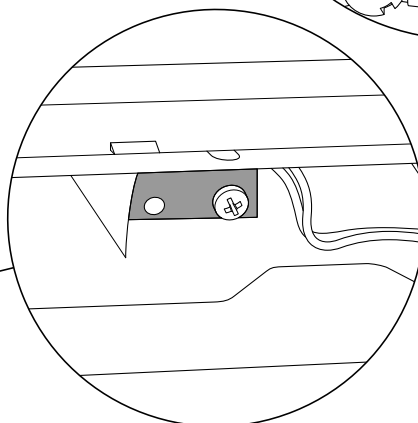
19.4  
Infuser bottom limit  
microswitch



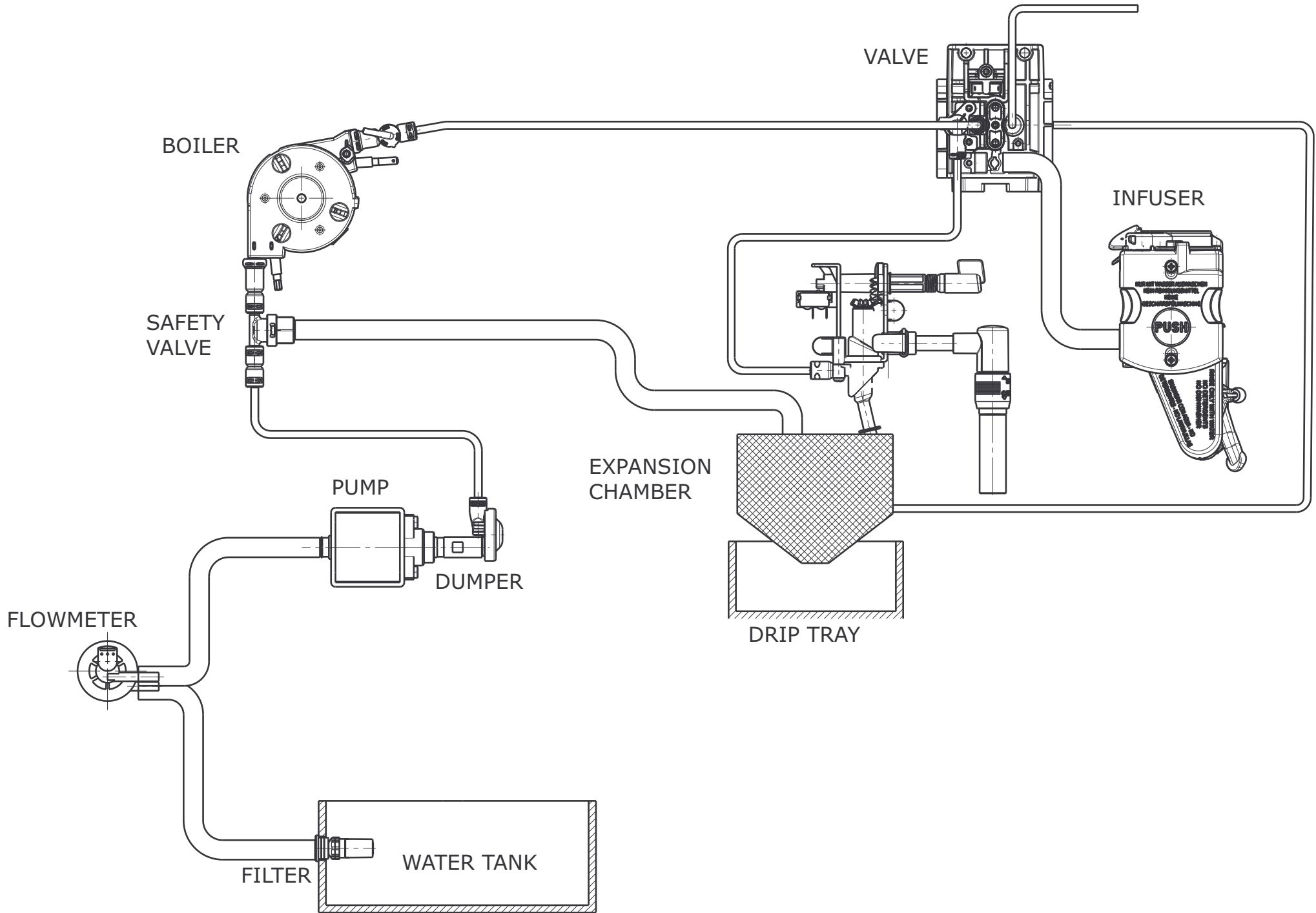
19.5  
Waste container  
microswitch



19.6  
Reed switch  
water tank

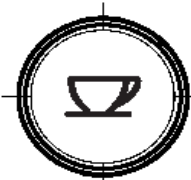
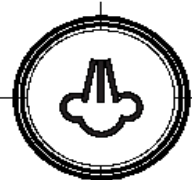






# WATER CIRCUIT



# TEST PROCEDURE FOR ECAM23.210 INTENSA

















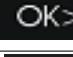


TEST PROCEDURE	Pressing each icon below, we can manually check the devices:	
	icon	device
<p>Put Steam Tap on 0. Plug the machine ON. Press and hold: 1 Coffee + Steam buttons</p> <div style="display: flex; justify-content: center; gap: 20px;">   </div> <p>Press On/Off Switch (position I)</p>		Coffe Boiler ON
		Grinder ON
		Motor UP, till "UPPER LIMIT Motor DOWN, till "BOTTOM LIMIT
		Water Pump ON
<p><b>NOTE:</b> Release bttions when motor starts moving.</p>		

**NOTE:** Every led blinks when the microswitch is open

To EXIT the procedure, press On/Off Swich (position 0) or unplug the machine.

# DISPLAY TEST PROCEDURE FOR ECAM23.210 INTENSA



DISPLAY TEST PROCEDURE	Pressing each icon the display will show following message	
<p data-bbox="240 1290 759 1375">To enter the DISPLAY test: Plug the machine ON. Press and hold: 1 Coffee + Steam buttons</p> <div style="display: flex; justify-content: space-around; align-items: center;">   </div> <p data-bbox="245 1608 635 1637">Press On/Off Switch (position I)</p>	icon	message
<p data-bbox="253 1738 715 1794"><b>Note:</b> Release buttons some seconds after icons blinked.</p>	      	      
	<p data-bbox="804 1738 1002 1823">Turning the knob, the display will show the bar increasing or decreasing.</p>	

**NOTE:** After display Test performing, you need to initialize the machine.

To EXIT the procedure, press On/Off Switch (position 0) or unplug the machine. Test procedure ends automatically 1 minute after you complete it.