



LG

Life's Good

CONFIDENTIAL

LED TV

SERVICE MANUAL

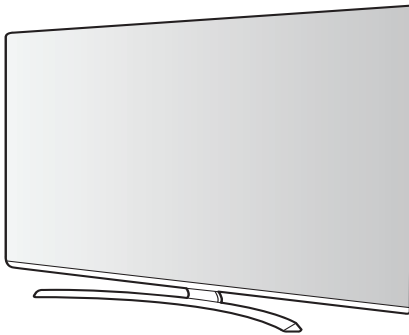
CHASSIS : UD71J

MODEL : 60SJ810* 60SJ810*-ZA

65SJ810* 65SJ810*-ZA

CAUTION

BEFORE SERVICING THE CHASSIS, READ THE SAFETY PRECAUTIONS IN THIS MANUAL.



P/NO : MFL69980303 (1702-REV00)

CONTENTS

CONTENTS	2
SAFETY PRECAUTIONS	3
SERVICING PRECAUTIONS.....	4
SPECIFICATION	6
SOFTWARE UPDATE	10
BLOCK DIAGRAM.....	11
EXPLODED VIEW	18
DISASSEMBLY GUIDE	19
TROUBLE SHOOTING GUIDE	APPENDIX

SAFETY PRECAUTIONS

IMPORTANT SAFETY NOTICE

Many electrical and mechanical parts in this chassis have special safety-related characteristics. These parts are identified by \triangle in the Exploded View.

It is essential that these special safety parts should be replaced with the same components as recommended in this manual to prevent Shock, Fire, or other Hazards.

Do not modify the original design without permission of manufacturer.

General Guidance

An **isolation Transformer should always be used** during the servicing of a receiver whose chassis is not isolated from the AC power line. Use a transformer of adequate power rating as this protects the technician from accidents resulting in personal injury from electrical shocks.

It will also protect the receiver and its components from being damaged by accidental shorts of the circuitry that may be inadvertently introduced during the service operation.

If any fuse (or Fusible Resistor) in this TV receiver is blown, replace it with the specified.

When replacing a high wattage resistor (Oxide Metal Film Resistor, over 1 W), keep the resistor 10 mm away from PCB.

Keep wires away from high voltage or high temperature parts.

Before returning the receiver to the customer,

always perform an **AC leakage current check** on the exposed metallic parts of the cabinet, such as antennas, terminals, etc., to be sure the set is safe to operate without damage of electrical shock.

Leakage Current Cold Check(Antenna Cold Check)

With the instrument AC plug removed from AC source, connect an electrical jumper across the two AC plug prongs. Place the AC switch in the on position, connect one lead of ohm-meter to the AC plug prongs tied together and touch other ohm-meter lead in turn to each exposed metallic parts such as antenna terminals, phone jacks, etc.

If the exposed metallic part has a return path to the chassis, the measured resistance should be between 1 M Ω and 5.2 M Ω .

When the exposed metal has no return path to the chassis the reading must be infinite.

An other abnormality exists that must be corrected before the receiver is returned to the customer.

Leakage Current Hot Check (See below Figure)

Plug the AC cord directly into the AC outlet.

Do not use a line Isolation Transformer during this check.

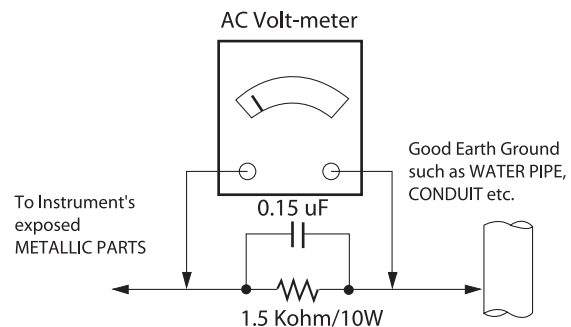
Connect 1.5 K / 10 watt resistor in parallel with a 0.15 uF capacitor between a known good earth ground (Water Pipe, Conduit, etc.) and the exposed metallic parts.

Measure the AC voltage across the resistor using AC voltmeter with 1000 ohms/volt or more sensitivity.

Reverse plug the AC cord into the AC outlet and repeat AC voltage measurements for each exposed metallic part. Any voltage measured must not exceed 0.75 volt RMS which corresponds to 0.5 mA.

In case any measurement is out of the limits specified, there is possibility of shock hazard and the set must be checked and repaired before it is returned to the customer.

Leakage Current Hot Check circuit



When 25A is impressed between Earth and 2nd Ground for 1 second, Resistance must be less than 0.1 Ω

*Base on Adjustment standard

SERVICING PRECAUTIONS

CAUTION: Before servicing receivers covered by this service manual and its supplements and addenda, read and follow the **SAFETY PRECAUTIONS** on page 3 of this publication.

NOTE: If unforeseen circumstances create conflict between the following servicing precautions and any of the safety precautions on page 3 of this publication, always follow the safety precautions. Remember: Safety First.

General Servicing Precautions

1. Always unplug the receiver AC power cord from the AC power source before;
 - a. Removing or reinstalling any component, circuit board module or any other receiver assembly.
 - b. Disconnecting or reconnecting any receiver electrical plug or other electrical connection.
 - c. Connecting a test substitute in parallel with an electrolytic capacitor in the receiver.
CAUTION: A wrong part substitution or incorrect polarity installation of electrolytic capacitors may result in an explosion hazard.
2. Test high voltage only by measuring it with an appropriate high voltage meter or other voltage measuring device (DVM, FET-VOM, etc) equipped with a suitable high voltage probe. Do not test high voltage by "drawing an arc".
3. Do not spray chemicals on or near this receiver or any of its assemblies.
4. Unless specified otherwise in this service manual, clean electrical contacts only by applying the following mixture to the contacts with a pipe cleaner, cotton-tipped stick or comparable non-abrasive applicator; 10 % (by volume) Acetone and 90 % (by volume) isopropyl alcohol (90 % - 99 % strength)
CAUTION: This is a flammable mixture.
Unless specified otherwise in this service manual, lubrication of contacts is not required.
5. Do not defeat any plug/socket B+ voltage interlocks with which receivers covered by this service manual might be equipped.
6. Do not apply AC power to this instrument and/or any of its electrical assemblies unless all solid-state device heat sinks are correctly installed.
7. Always connect the test receiver ground lead to the receiver chassis ground before connecting the test receiver positive lead.
Always remove the test receiver ground lead last.
8. Use with this receiver only the test fixtures specified in this service manual.
CAUTION: Do not connect the test fixture ground strap to any heat sink in this receiver.

Electrostatically Sensitive (ES) Devices

Some semiconductor (solid-state) devices can be damaged easily by static electricity. Such components commonly are called Electrostatically Sensitive (ES) Devices. Examples of typical ES devices are integrated circuits and some field-effect transistors and semiconductor "chip" components. The following techniques should be used to help reduce the incidence of component damage caused by static by static electricity.

1. Immediately before handling any semiconductor component or semiconductor-equipped assembly, drain off any electrostatic charge on your body by touching a known earth ground. Alternatively, obtain and wear a commercially available discharging wrist strap device, which should be removed to prevent potential shock reasons prior to applying power to the unit under test.

2. After removing an electrical assembly equipped with ES devices, place the assembly on a conductive surface such as aluminum foil, to prevent electrostatic charge buildup or exposure of the assembly.
3. Use only a grounded-tip soldering iron to solder or unsolder ES devices.
4. Use only an anti-static type solder removal device. Some solder removal devices not classified as "anti-static" can generate electrical charges sufficient to damage ES devices.
5. Do not use freon-propelled chemicals. These can generate electrical charges sufficient to damage ES devices.
6. Do not remove a replacement ES device from its protective package until immediately before you are ready to install it. (Most replacement ES devices are packaged with leads electrically shorted together by conductive foam, aluminum foil or comparable conductive material).
7. Immediately before removing the protective material from the leads of a replacement ES device, touch the protective material to the chassis or circuit assembly into which the device will be installed.
CAUTION: Be sure no power is applied to the chassis or circuit, and observe all other safety precautions.
8. Minimize bodily motions when handling unpackaged replacement ES devices. (Otherwise harmless motion such as the brushing together of your clothes fabric or the lifting of your foot from a carpeted floor can generate static electricity sufficient to damage an ES device.)

General Soldering Guidelines

1. Use a grounded-tip, low-wattage soldering iron and appropriate tip size and shape that will maintain tip temperature within the range of 500 °F to 600 °F.
2. Use an appropriate gauge of RMA resin-core solder composed of 60 parts tin/40 parts lead.
3. Keep the soldering iron tip clean and well tinned.
4. Thoroughly clean the surfaces to be soldered. Use a mall wire-bristle (0.5 inch, or 1.25 cm) brush with a metal handle. Do not use freon-propelled spray-on cleaners.
5. Use the following unsoldering technique
 - a. Allow the soldering iron tip to reach normal temperature. (500 °F to 600 °F)
 - b. Heat the component lead until the solder melts.
 - c. Quickly draw the melted solder with an anti-static, suction-type solder removal device or with solder braid.
CAUTION: Work quickly to avoid overheating the circuit board printed foil.
6. Use the following soldering technique.
 - a. Allow the soldering iron tip to reach a normal temperature (500 °F to 600 °F)
 - b. First, hold the soldering iron tip and solder the strand against the component lead until the solder melts.
 - c. Quickly move the soldering iron tip to the junction of the component lead and the printed circuit foil, and hold it there only until the solder flows onto and around both the component lead and the foil.
CAUTION: Work quickly to avoid overheating the circuit board printed foil.
 - d. Closely inspect the solder area and remove any excess or splashed solder with a small wire-bristle brush.

IC Remove/Replacement

Some chassis circuit boards have slotted holes (oblong) through which the IC leads are inserted and then bent flat against the circuit foil. When holes are the slotted type, the following technique should be used to remove and replace the IC. When working with boards using the familiar round hole, use the standard technique as outlined in paragraphs 5 and 6 above.

Removal

1. Desolder and straighten each IC lead in one operation by gently prying up on the lead with the soldering iron tip as the solder melts.
2. Draw away the melted solder with an anti-static suction-type solder removal device (or with solder braid) before removing the IC.

Replacement

1. Carefully insert the replacement IC in the circuit board.
2. Carefully bend each IC lead against the circuit foil pad and solder it.
3. Clean the soldered areas with a small wire-bristle brush. (It is not necessary to reapply acrylic coating to the areas).

"Small-Signal" Discrete Transistor

Removal/Replacement

1. Remove the defective transistor by clipping its leads as close as possible to the component body.
2. Bend into a "U" shape the end of each of three leads remaining on the circuit board.
3. Bend into a "U" shape the replacement transistor leads.
4. Connect the replacement transistor leads to the corresponding leads extending from the circuit board and crimp the "U" with long nose pliers to insure metal to metal contact then solder each connection.

Power Output, Transistor Device

Removal/Replacement

1. Heat and remove all solder from around the transistor leads.
2. Remove the heat sink mounting screw (if so equipped).
3. Carefully remove the transistor from the heat sink of the circuit board.
4. Insert new transistor in the circuit board.
5. Solder each transistor lead, and clip off excess lead.
6. Replace heat sink.

Diode Removal/Replacement

1. Remove defective diode by clipping its leads as close as possible to diode body.
2. Bend the two remaining leads perpendicular y to the circuit board.
3. Observing diode polarity, wrap each lead of the new diode around the corresponding lead on the circuit board.
4. Securely crimp each connection and solder it.
5. Inspect (on the circuit board copper side) the solder joints of the two "original" leads. If they are not shiny, reheat them and if necessary, apply additional solder.

Fuse and Conventional Resistor

Removal/Replacement

1. Clip each fuse or resistor lead at top of the circuit board hollow stake.
2. Securely crimp the leads of replacement component around notch at stake top.

3. Solder the connections.

CAUTION: Maintain original spacing between the replaced component and adjacent components and the circuit board to prevent excessive component temperatures.

Circuit Board Foil Repair

Excessive heat applied to the copper foil of any printed circuit board will weaken the adhesive that bonds the foil to the circuit board causing the foil to separate from or "lift-off" the board. The following guidelines and procedures should be followed whenever this condition is encountered.

At IC Connections

To repair a defective copper pattern at IC connections use the following procedure to install a jumper wire on the copper pattern side of the circuit board. (Use this technique only on IC connections).

1. Carefully remove the damaged copper pattern with a sharp knife. (Remove only as much copper as absolutely necessary).
2. Carefully scratch away the solder resist and acrylic coating (if used) from the end of the remaining copper pattern.
3. Bend a small "U" in one end of a small gauge jumper wire and carefully crimp it around the IC pin. Solder the IC connection.
4. Route the jumper wire along the path of the out-away copper pattern and let it overlap the previously scraped end of the good copper pattern. Solder the overlapped area and clip off any excess jumper wire.

At Other Connections

Use the following technique to repair the defective copper pattern at connections other than IC Pins. This technique involves the installation of a jumper wire on the component side of the circuit board.

1. Remove the defective copper pattern with a sharp knife. Remove at least 1/4 inch of copper, to ensure that a hazardous condition will not exist if the jumper wire opens.
2. Trace along the copper pattern from both sides of the pattern break and locate the nearest component that is directly connected to the affected copper pattern.
3. Connect insulated 20-gauge jumper wire from the lead of the nearest component on one side of the pattern break to the lead of the nearest component on the other side. Carefully crimp and solder the connections.
CAUTION: Be sure the insulated jumper wire is dressed so the it does not touch components or sharp edges.

SPECIFICATION

NOTE : Specifications and others are subject to change without notice for improvement.

1. Application range

This specification is applied to the LED TV used UD71J chassis.

2. Requirement for Test

Each part is tested as below without special notice.

- (1) Temperature: 25 °C ± 5 °C(77 °F ± 9 °F), CST: 40 °C ± 5 °C
- (2) Relative Humidity: 65 % ± 10 %
- (3) Power Voltage
: Standard input voltage (AC 100~240 V, 50/60 Hz)
* Standard Voltage of each products is marked by models.
- (4) Specification and performance of each parts are followed each drawing and specification by part number in accordance with BOM.
- (5) The receiver must be operated for about 20 minutes prior to the adjustment.

3. Test method

- (1) Performance: LGE TV test method followed
- (2) Demanded other specification
 - Safety : CE, IEC specification
 - EMC : CE, IEC specification
 - Wireless : Wireless HD Specification (Option)

4. Model General Specification

No.	Item	Specification	Remarks
1	Market	EU(PAL Market-36Countries)/CIS + Morocco(Africa)	<p>DTV & Analog (Total 37 countries)</p> <p>DTV (MPEG2/4, DVB-T) : 26 countries Germany, Netherland, Switzerland, Hungary, Austria, Slovenia, Bulgaria, France, Spain, Belgium, Luxemburg, Greece, Czech, Turkey, Morocco, Ireland, Latvia, Estonia, Lithuania, Poland, Portugal, Romania, Albania, Bosnia, Slovakia, Belarus</p> <p>DTV (MPEG2/4, DVB-T2) : 11 countries UK(Ireland), Sweden, Denmark, Finland, Norway, Ukraine, Kazakhstan, Russia, Italy, Croatia, Serbia</p> <p>DTV (MPEG2/4, DVB-C) : 37 countries Germany, Netherland, Switzerland, Hungary, Austria, Slovenia, Bulgaria, France, Spain, Italy, Belgium, Russia, Luxemburg, Greece, Czech, Croatia, Turkey, Morocco, Ireland, Latvia, Estonia, Lithuania, Poland, Portugal, Romania, Albania, Bosnia, Serbia, Slovakia, Belarus, UK, Sweden, Denmark, Finland, Norway, Ukraine, Kazakhstan</p> <p>DTV (MPEG2/4,DVB-S) : 37 countries Germany, Netherland, Switzerland, Hungary, Austria, Slovenia, Bulgaria, France, Spain,Belgium, Luxemburg, Greece, Czech, Turkey, Morocco, Ireland, Latvia, Estonia, Lithuania, Poland, Portugal, Romania, Albania, Bosnia, Slovakia, Belarus, UK(Ireland), Sweden, Denmark, Finland, Norway, Ukraine, Kazakhstan,Russia, Italy, Croatia, Serbia</p> <p>Supported satellite : 35 satellites ABS1 75.0E, AMOS 4.0W, ASIASAT3S 105.5E, ASTRA 19.2E, ASTRA 23.5E, ASTRA 28.2E, ASTRA 4.8E, ATLANTIC BIRD2 8.0W, ATLANTIC BIRD3 5.0W, BADR 26.0E, DIRECTV-1R 56.0E, EUROBIRD 9A 9.0E, EUROBIRD3 33.0E, EUTELSAT 36 A/B 36.0E,EUTELSAT W2A 10.0E, EUTELSAT W3A 7.0E, EUTELSAT7WA 7.3WEUTELSAT 16.0E, EXPRESS AM1 40.0E, EXPRESS AM3 140.0E, EXPRESS AM33 96.5E, HELLASSAT 39.0E, HISPASAT 1CDE 30.0WHOTBIRD 13.0E, INTEL-SAT10&7 68.5E, INTELSAT15 85.2E, INTELSAT1R 50.0W, INTELSAT903 33.5W, INTELSAT904 60.0E, NILESAT 7.0W, NSS12 57.0E, THOR 0.8W, TURKSAT 42.0E,YAMAL201 90.0E, OTHER</p>

No.	Item	Specification	Remarks
2	Broadcasting system	(1) Digital TV - DVB-T - DVB-T2* - DVB-C - DVB-S/S2* (2) Analogue TV - PAL/SECAM B/G/I/D/K - SECAM L	*:Depending on country
3	Channel coverage	(1) Digital TV 1) DVB-T/T2 - VHF III : 174~230MHz - UHF IV : 470~606MHz - UHF V : 606~862MHz - S Band II : 230~300MHz - S Band III : 300 ~470MHz 2) DVB-C - 46 ~ 890MHz 3) DVB-S/S2 - 950~2150MHz (2) Analogue TV - 46~862MHz	
4	Receiving system	Analog : Upper Heterodyne Digital : COFDM, QAM	<ul style="list-style-type: none"> ▶ DVB-T <ul style="list-style-type: none"> - Guard Interval(Bitrate_Mbit/s) 1/4, 1/8, 1/16, 1/32 - Modulation : Code Rate QPSK : 1/2, 2/3, 3/4, 5/6, 7/8 16-QAM : 1/2, 2/3, 3/4, 5/6, 7/8 64-QAM : 1/2, 2/3, 3/4, 5/6, 7/8 ▶ DVB-T2 (Model : *L*V*-Z* (T2 only Model)) <ul style="list-style-type: none"> - Guard Interval(Bitrate_Mbit/s) 1/4, 1/8, 1/16, 1/32, 1/128, 19/128, 19/256, - Modulation : Code Rate QPSK : 1/2, 2/5, 2/3, 3/4, 5/6 16-QAM : 1/2, 2/5, 2/3, 3/4, 5/6 64-QAM : 1/2, 2/5, 2/3, 3/4, 5/6 256-QAM : 1/2, 2/5, 2/3, 3/4, 5/6 ▶ DVB-C <ul style="list-style-type: none"> - Symbolrate : 4.0Msymbols/s to 7.2Msymbols/s - Modulation : 16QAM, 64-QAM, 128-QAM and 256-QAM ▶ DVB-S/S2 <ul style="list-style-type: none"> - symbolrate DVB-S2 (8PSK / QPSK) : 2 ~ 45Msymbol/s DVB-S (QPSK) : 2 ~ 45Msymbol/s - viterbi DVB-S mode : 1/2, 2/3, 3/4, 5/6, 7/8 DVB-S2 mode : 1/2, 2/3, 3/4, 3/5, 4/5, 5/6, 8/9, 9/10
5	Head phone out	Antenna, HDMI1, HDMI2, HDMI3, HDMI4, USB1, USB2, USB3	
6	HDMI Input (4EA)	HDMI1, HDMI2, HDMI3, HDMI4	
7	SPDIF out (1EA)	SPDIF out	
8	USB (3EA)	EMF, For SVC (download)	
9	Ethernet Connect(1EA)	Ethernet Connect	STP cable.
10	PCMCIA Card slot (1EA)	PCMCIA slot	

5. External Input Format

5.1. 2D Mode

(1) HDMI Input (DTV)

No.	Resolution	H-freq(kHz)	V-freq.(kHz)	Pixel clock(MHz)	Proposed	Remarks
1	640*480	31.469	59.94	25.125	SDTV 480P	
2	640*480	31.5	60.00	25.125	SDTV 480P	
3	720*480	15.73	59.94	13.500	SDTV 576P	Spec. out but display
4	720*480	15.75	60.00	13.514	HDTV 720P	
5	720*576	15.625	50.00	13.500	HDTV 720P	
6	720*480	31.47	59.94	27.00	HDTV 720P	
7	720*480	31.5	60.00	27.027	HDTV 1080I	
8	720*576	31.25	50.00	27.00	HDTV 1080I	
9	1280*720	44.96	59.94	74.176	HDTV 1080I	
10	1280*720	45.00	60.00	74.25	HDTV 1080P	
11	1280*720	37.50	50.00	74.25	HDTV 1080P	
12	1920*1080	28.125	50.00	74.25	HDTV 1080P	
13	1920*1080	33.72	59.94	74.176	HDTV 1080P	
14	1920*1080	33.75	60.00	74.25	HDTV 1080P	
15	1920*1080	26.97	23.976	63.296	HDTV 1080P	
16	1920*1080	27.00	24.000	63.36	HDTV 1080P	
17	1920*1080	33.71	29.97	79.120	UDTV 2160P	
18	1920*1080	33.75	30.00	79.20	UDTV 2160P	
19	1920*1080	56.25	50.00	148.50	UDTV 2160P	
20	1920*1080	67.432	59.94	148.350	UDTV 2160P	
21	1920*1080	67.50	60.00	148.50	UDTV 2160P	
22	1920*1080	135.00	120.00	297.00	UDTV 2160P(DVB)	
23	1920*1080	135.00	119.88	296.703	UDTV 2160P	
24	1920*1080	112.5	100.00	297.00	UDTV 2160P	
25	3840*2160	53.95	23.98	296.703	UDTV 2160P	
26	3840*2160	54.00	24.00	297.00	UDTV 2160P	
27	3840*2160	56.25	25.00	297.00	UDTV 2160P	
28	3840*2160	61.43	29.97	296.703	UDTV 2160P	
29	3840*2160	67.50	30.00	297.00	UDTV 2160P	
30	3840*2160	112.50	50.00	594.00	UDTV 2160P(DVB)	When HDMI1,2,3 UHD DEEP COLOUR ON
31	3840*2160	134.865	59.94	593.407	UDTV 2160P	When HDMI1,2,3 UHD DEEP COLOUR ON
32	3840*2160	135.00	60.00	594.00	UDTV 2160P	When HDMI1,2,3,4 UHD DEEP COLOUR ON
33	4096*2160	53.95	23.98	296.703	UDTV 2160P	
34	4096*2160	54.00	24.00	297.00	UDTV 2160P	
35	4096*2160	56.25	25.00	297.00	UDTV 2160P	
36	4096*2160	61.43	29.97	296.703	UDTV 2160P	
37	4096*2160	67.50	30.00	297.00	UDTV 2160P	

No.	Resolution	H-freq(kHz)	V-freq.(kHz)	Pixel clock(MHz)	Proposed	Remarks
38	4096*2160	112.50	50.00	594.00	UDTV 2160P	When HDMI1,2,3,4 UHD DEEP COLOUR ON
39	4096*2160	134.865	59.94	593.407	UDTV 2160P	When HDMI1,2,3,4 UHD DEEP COLOUR ON
40	4096*2160	135.00	60.00	594.00	UDTV 2160P	When HDMI1,2,3,4 UHD DEEP COLOUR ON

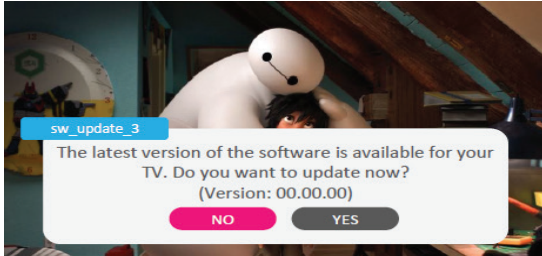
(4) HDMI Input (PC)

No.	Resolution	H-freq(kHz)	V-freq.(kHz)	Pixel clock(MHz)	Proposed	Remarks
1	640*350	31.46	70.09	25.17	EGA	
2	720*400	31.46	70.08	28.32	DOS	
3	640*480	31.46	59.94	25.17	VESA(VGA)	
4	800*600	37.87	60.31	40.00	VESA(SVGA)	
5	1024*768	48.36	60.00	65.00	VESA(XGA)	
6	1360*768	47.71	60.01	84.75	VESA(WXGA)	
7	1152*864	54.34	60.05	80.00	VESA	
8	1280*1024	63.98	60.02	109.00	SXGA	Support to HDMI-PC
9	1920*1080	67.50	60.00	158.40	WUXGA(Reduced Blanking)	
10	3840*2160	54.00	24.00	297.00	UDTV 2160P	
11	3840*2160	56.25	25.00	297.00	UDTV 2160P	
12	3840*2160	67.50	30.00	297.00	UDTV 2160P	
13	4096*2160	53.95	23.97	296.70	UDTV 2160P	
14	4096*2160	54.00	24.00	297.00	UDTV 2160P	

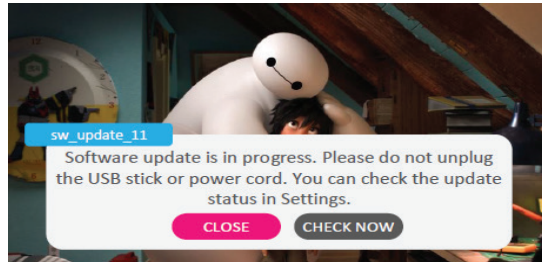
SOFTWARE UPDATE

1. USB

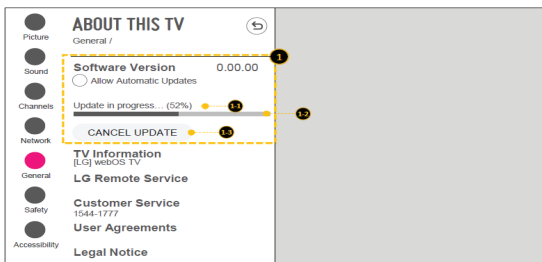
- (1) Insert the USB memory Stick to the USB port.
- (2) Automatically detect the SW Version and show the below message



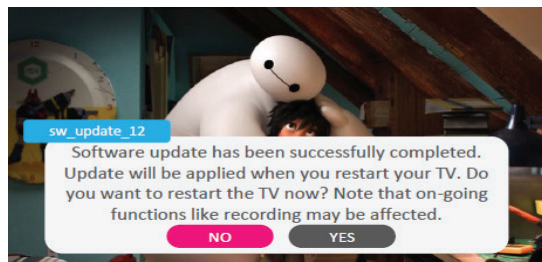
- (3) Click [YES]: initiate the download and install of the update.



- (4) Click [Check Now]: move to "About This TV" page for update.
- (5) TV is updating.



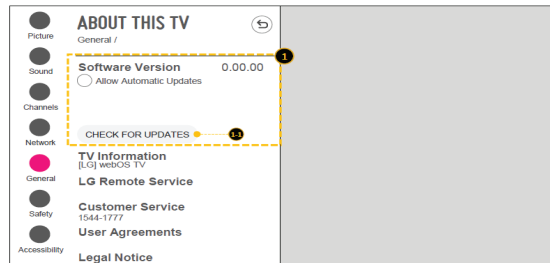
- (6) After finished the update, below Pop-up appear.



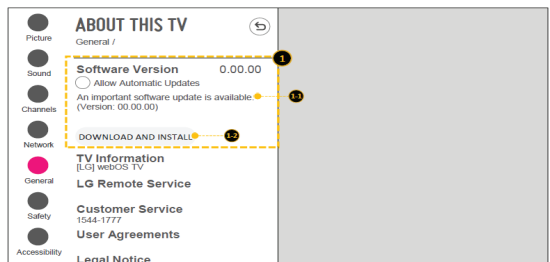
- (7) Click [Yes] : TV will be DC OFF -> ON
- (8) After TV turned on, Check the updated SW Version and Tool Option.

2. NSU

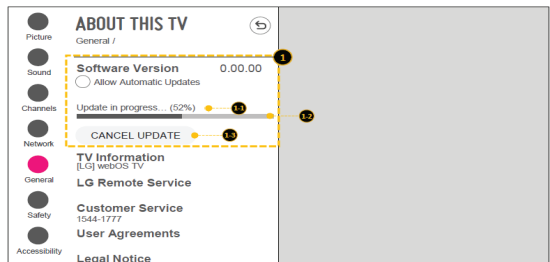
- (1) Menu -> All Settings -> General -> About This TV



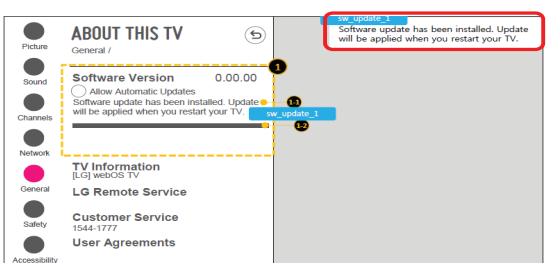
- (2) Click [CHEK FOR UPDATES] : system check newest version



- (3) Click [DOWNLOAD AND INSTALL]
- (4) TV is updating



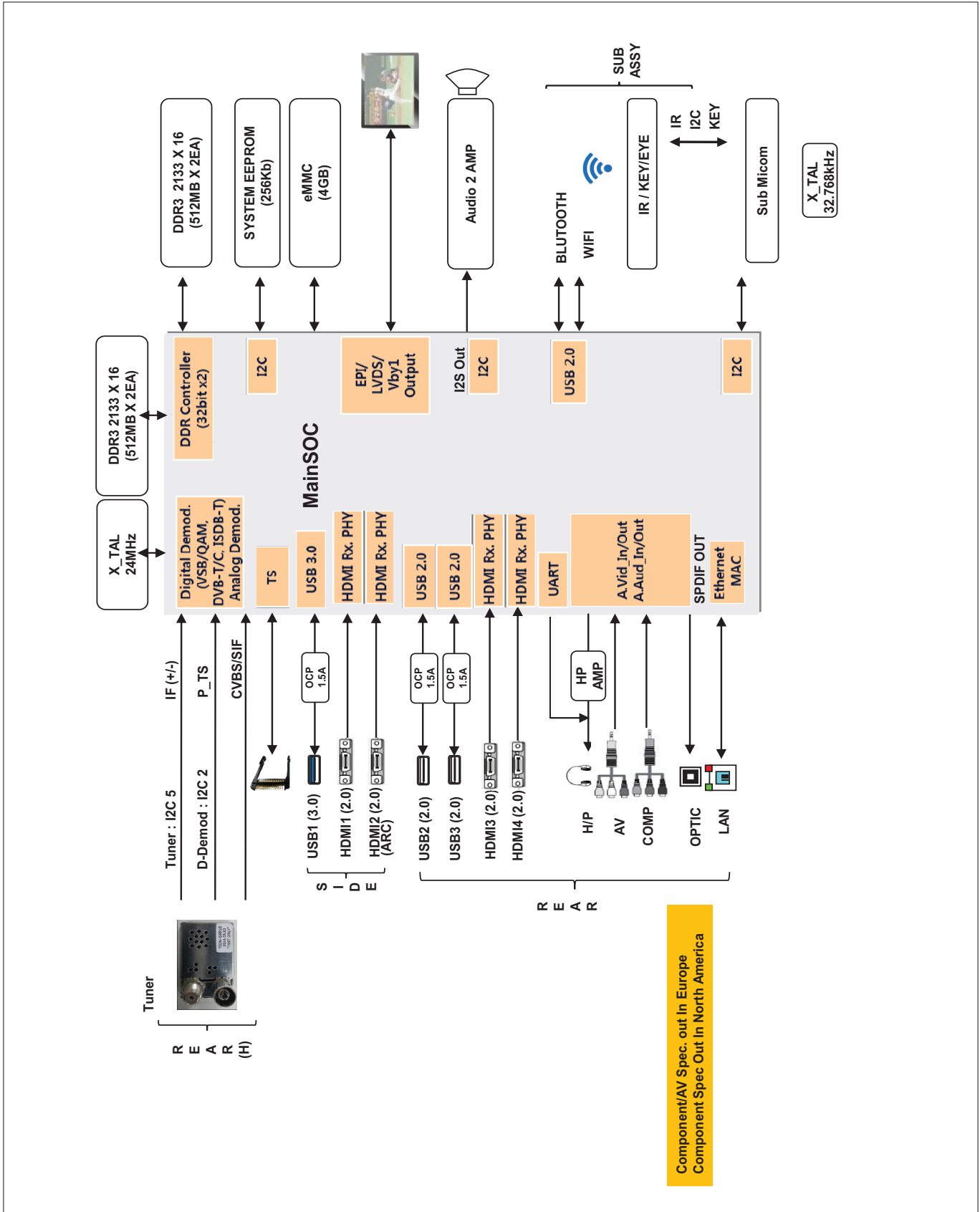
- (5) After finished the update, below Pop-up appear



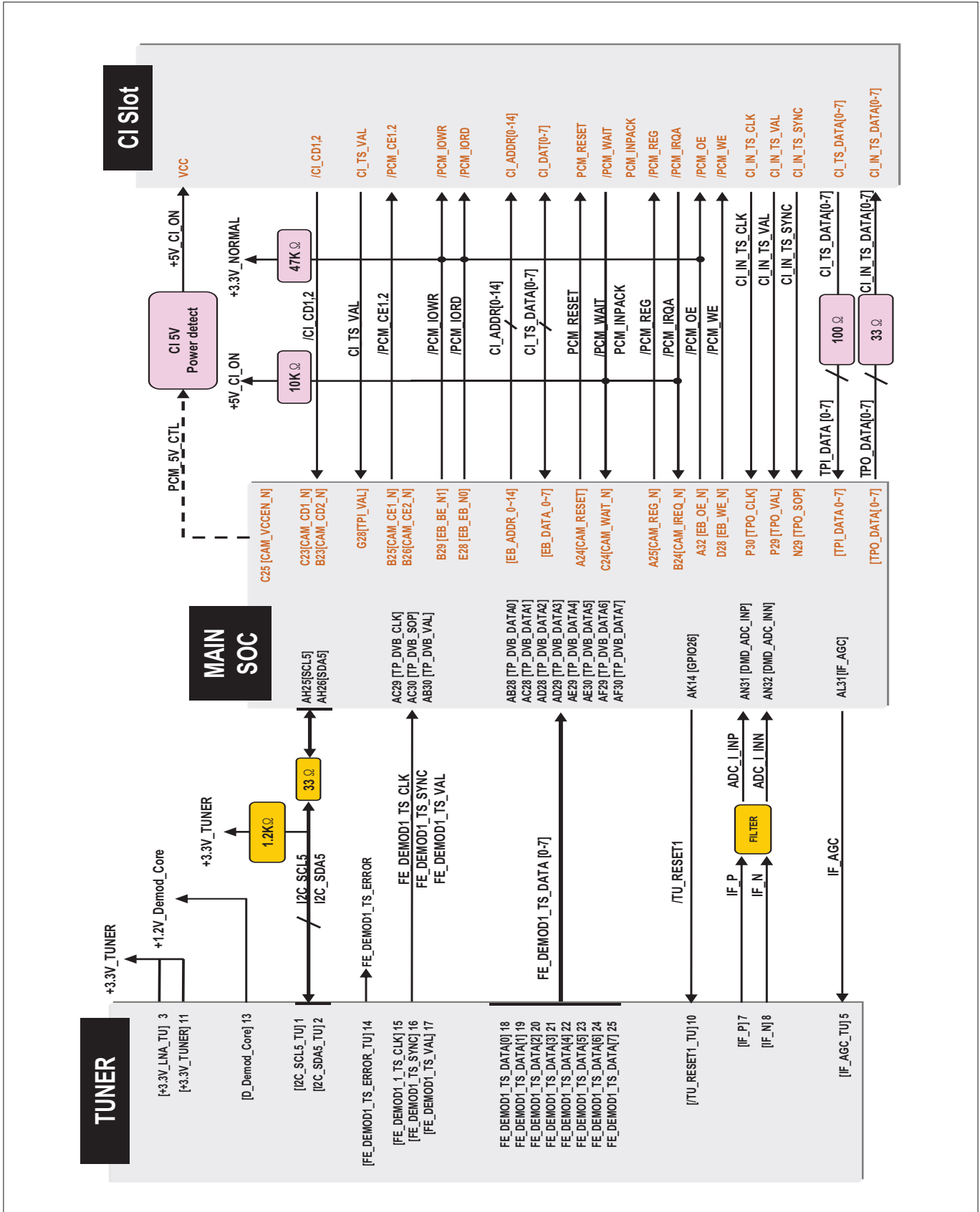
- (6) Turn OFF the TV and On. Check the updated SW Version and Tool Option

BLOCK DIAGRAM

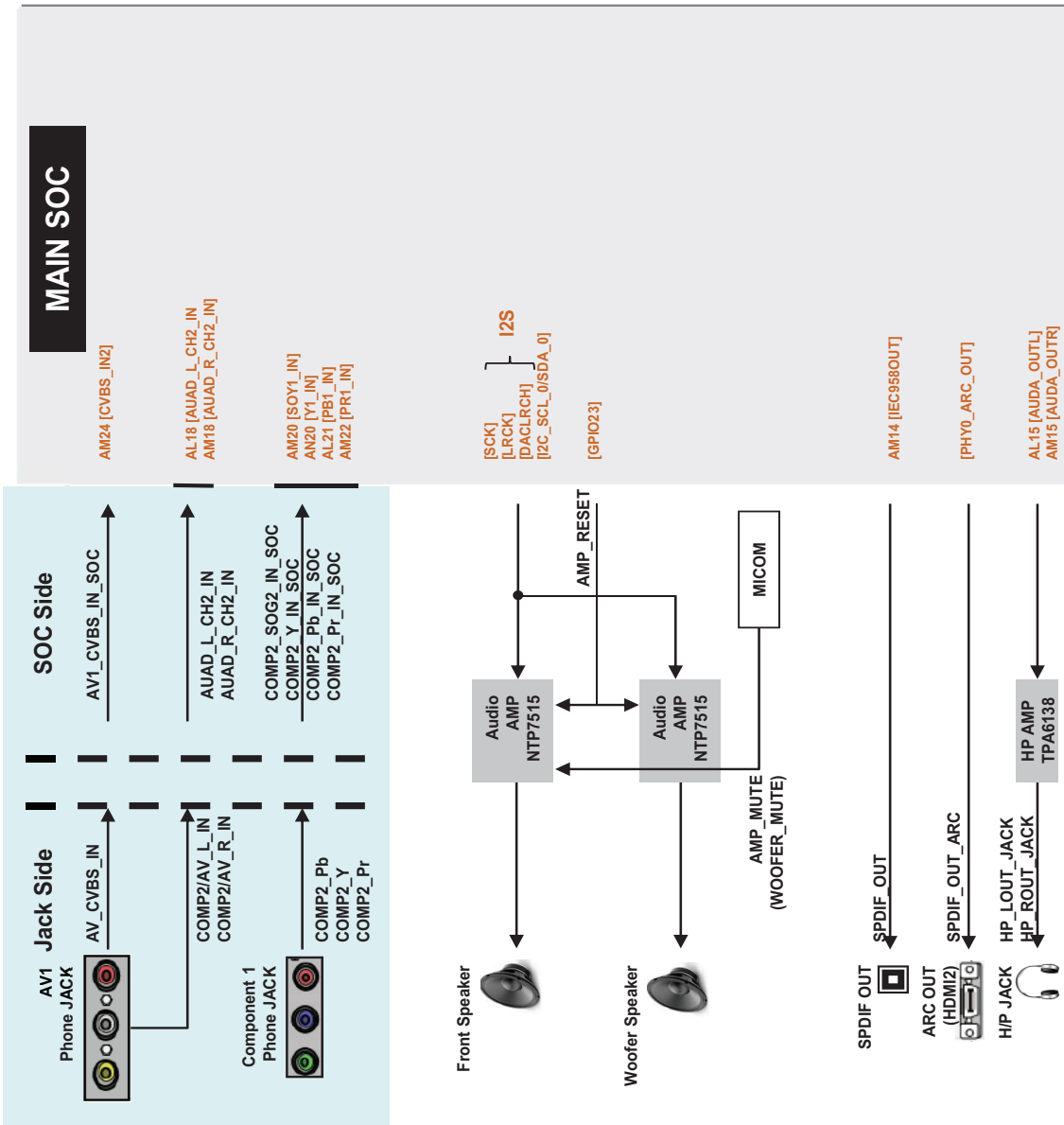
1. SOC Block Diagram



2. Tuner + CI

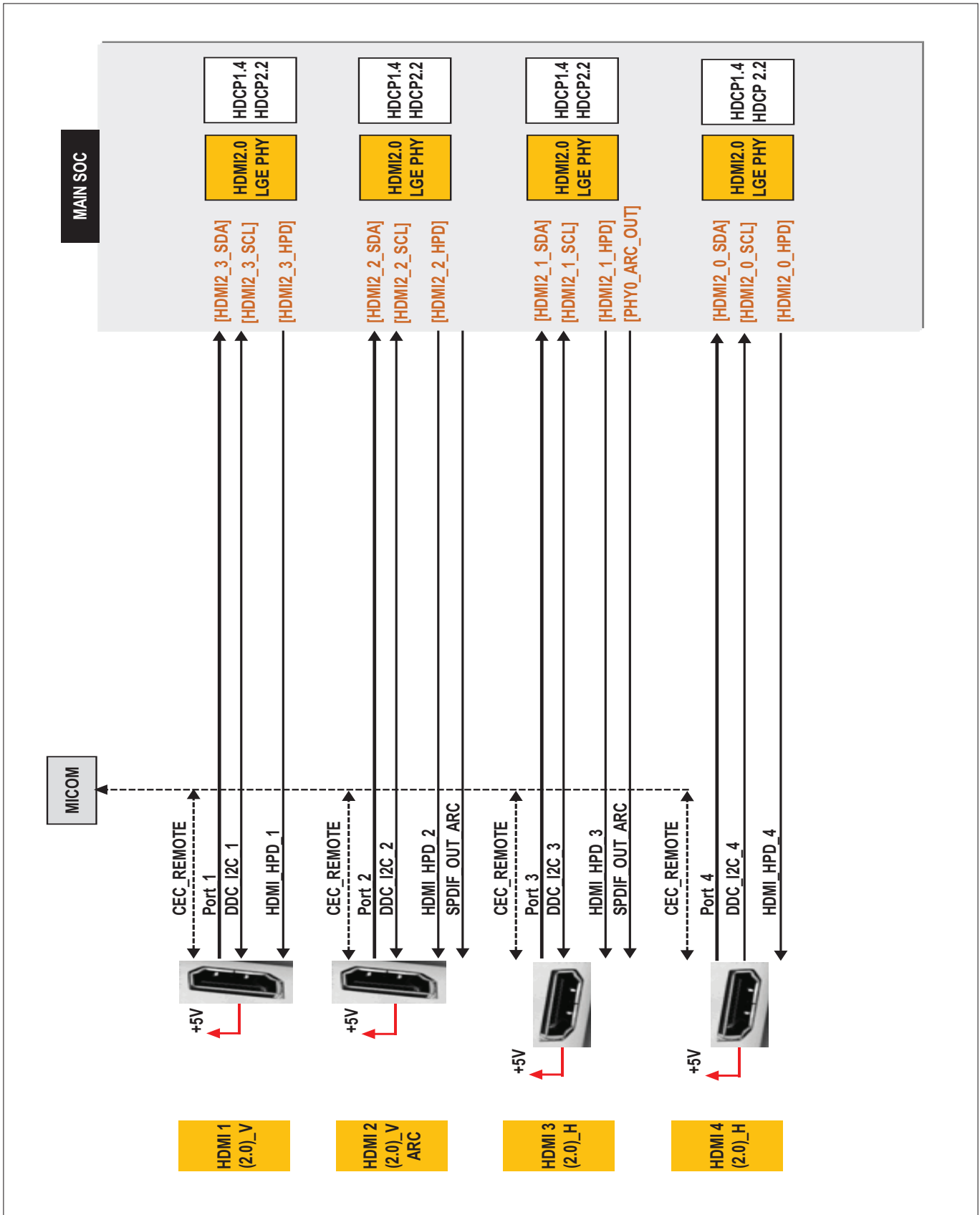


3. Video & Audio IN/OUT

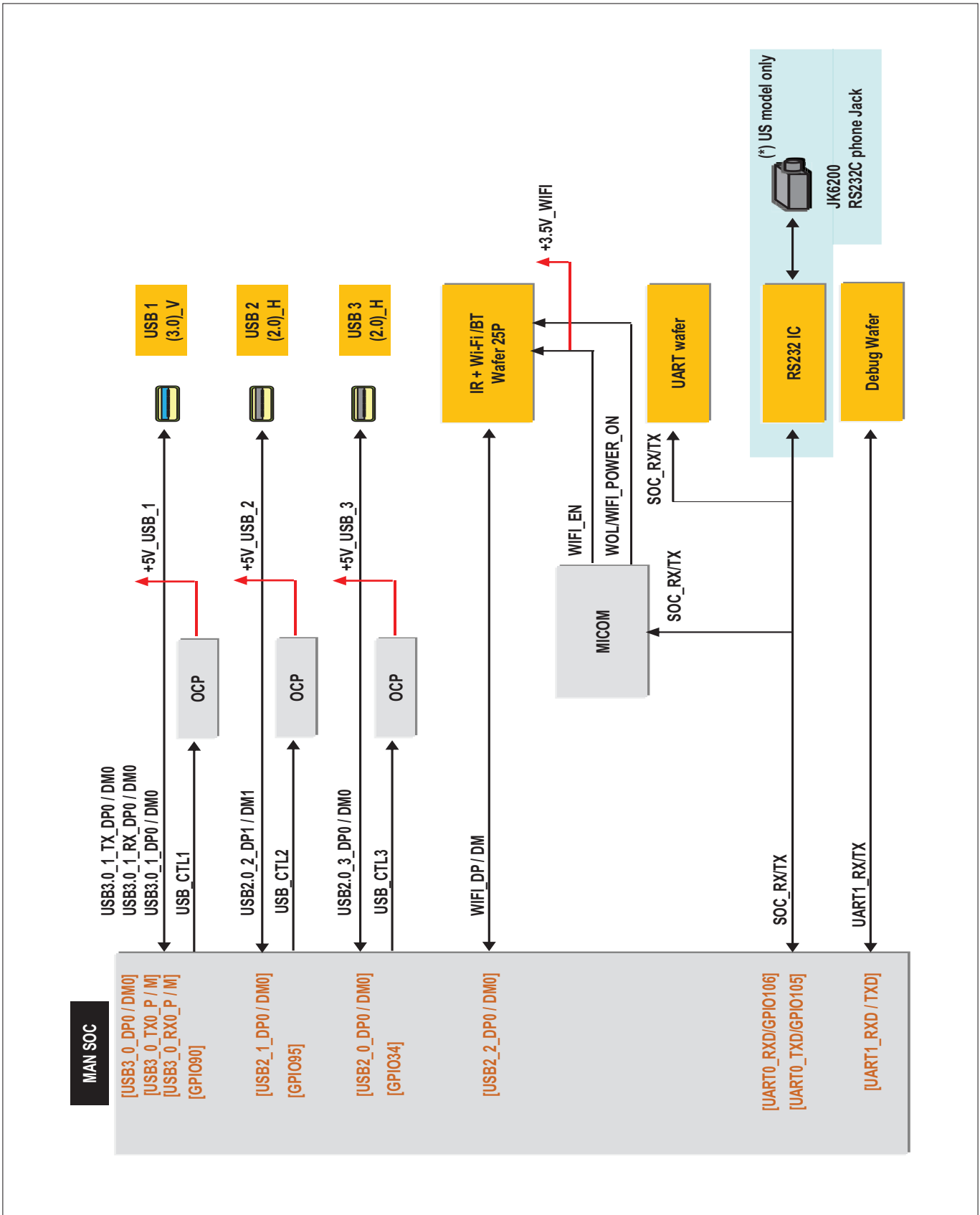


Component/AV Spec. out In Europe
Component Spec Out In North America

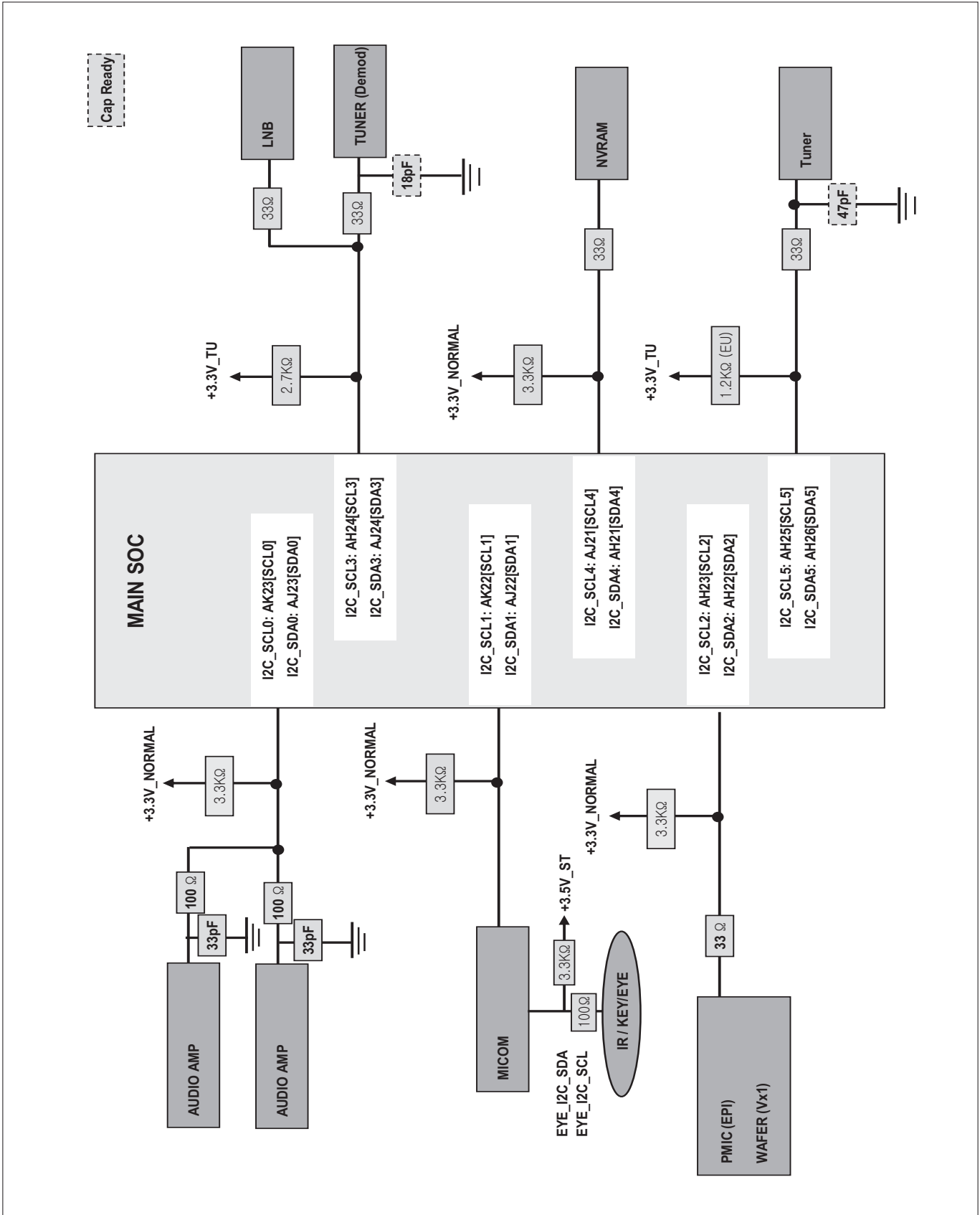
4. HDMI 2.0



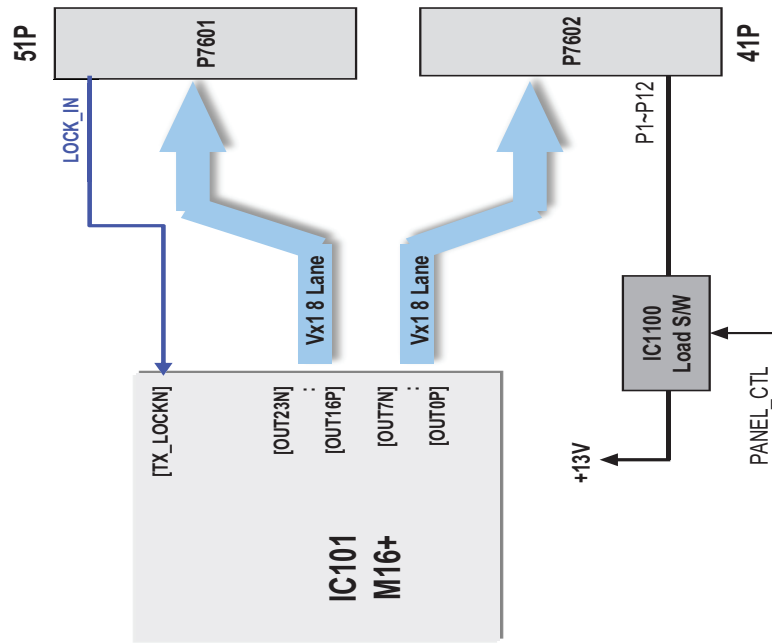
5. USB / Wi-Fi / M-Remote / UART



6. I2C Map



7. Vx1 block



51P Control Signal(TM240 RGB 黑殼)

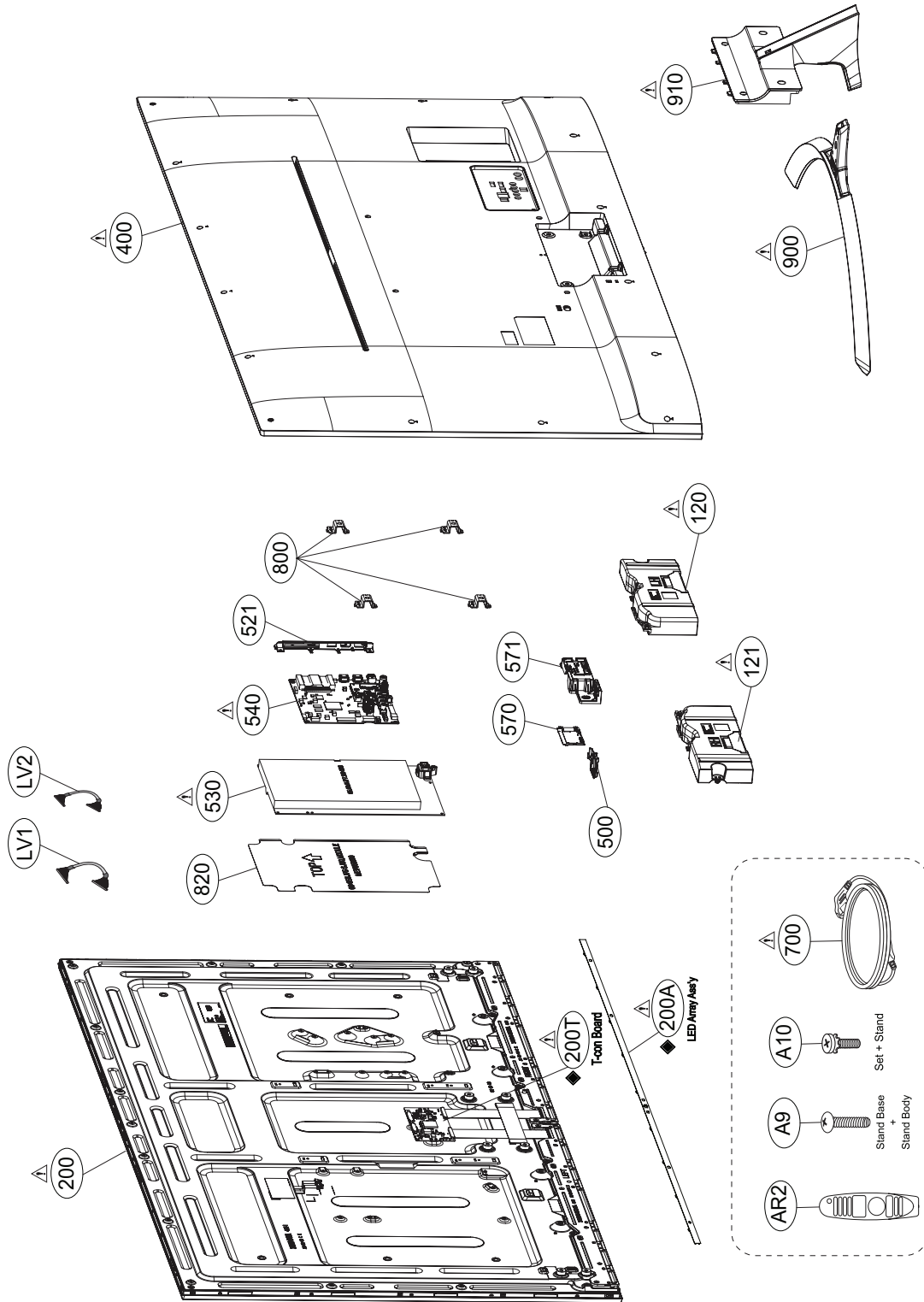
No	Name	Description,	□ Ning 權
37	Data format 0	Input Data Format [1:0] : '00'=Mode1, '01'=Mode2, '10'=Mode3	Pull Down
36	Data format 1		Pull Down
35	PCID	High : 3D Table(16Y C/O) Low or NC : 2D Table	2D Table
34	SDA	SDA (For I2C)	NC
33	SCL	SCL (For I2C)	NC
32	NC	NO CONNECTION	NC
31	Bit SEL	'H' or NC= 10bit(D), 'L' = 8bit	NC
30	L-DIM Enable	'H'=Enable, 'L' or NC=Disable	NC
29	AGP or NSB	'H' or NC : AGP, 'L' : NSB (No signal Black)	NC

EXPLODED VIEW

IMPORTANT SAFETY NOTICE

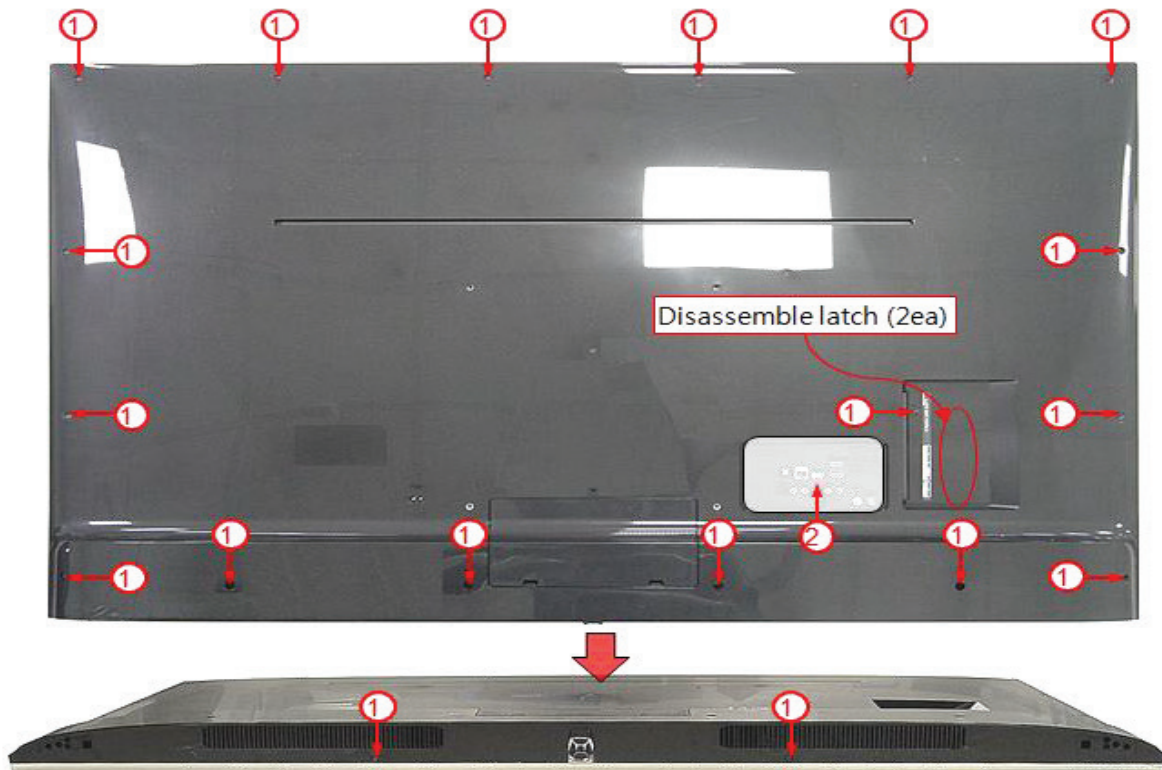
Many electrical and mechanical parts in this chassis have special safety-related characteristics. These parts are identified by \triangle in the EXPLODED VIEW. It is essential that these special safety parts should be replaced with the same components as recommended in this manual to prevent Shock, Fire, or other Hazards. Do not modify the original design without permission of manufacturer.

◆ : These parts are available on certain modules only.

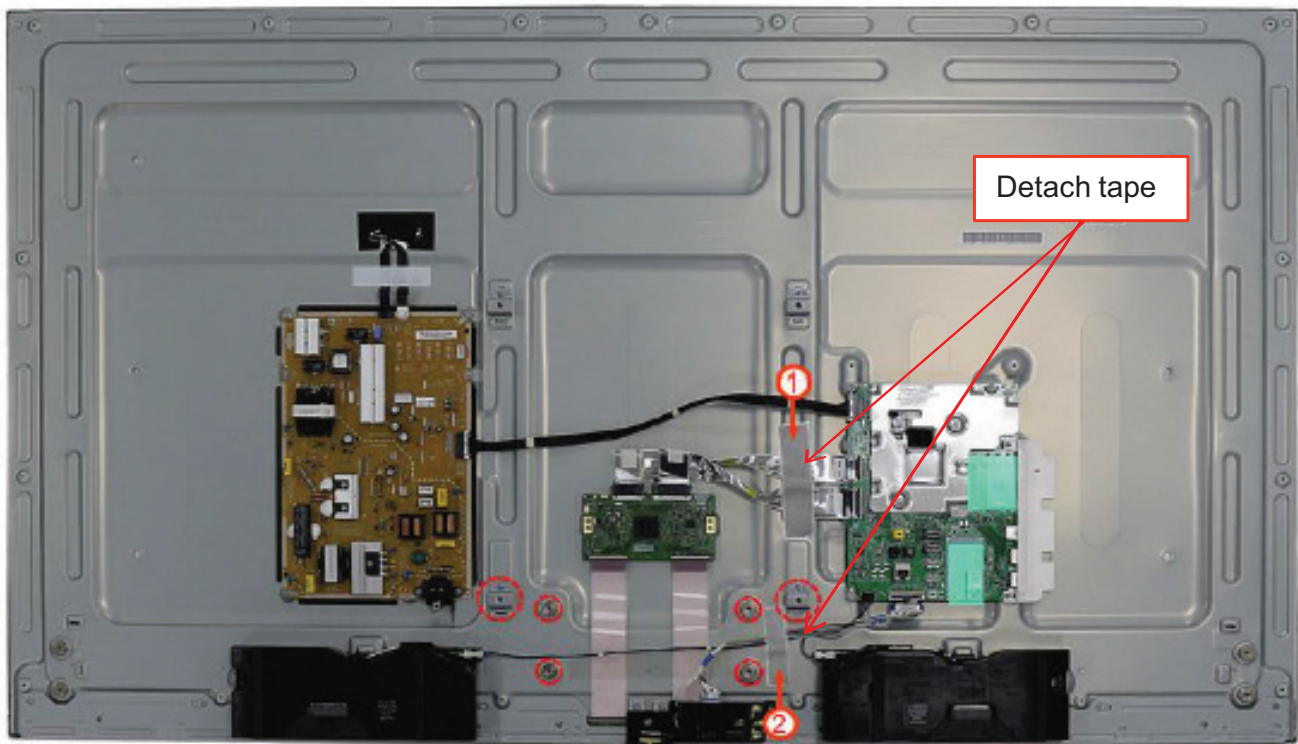


DISASSEMBLY GUIDE

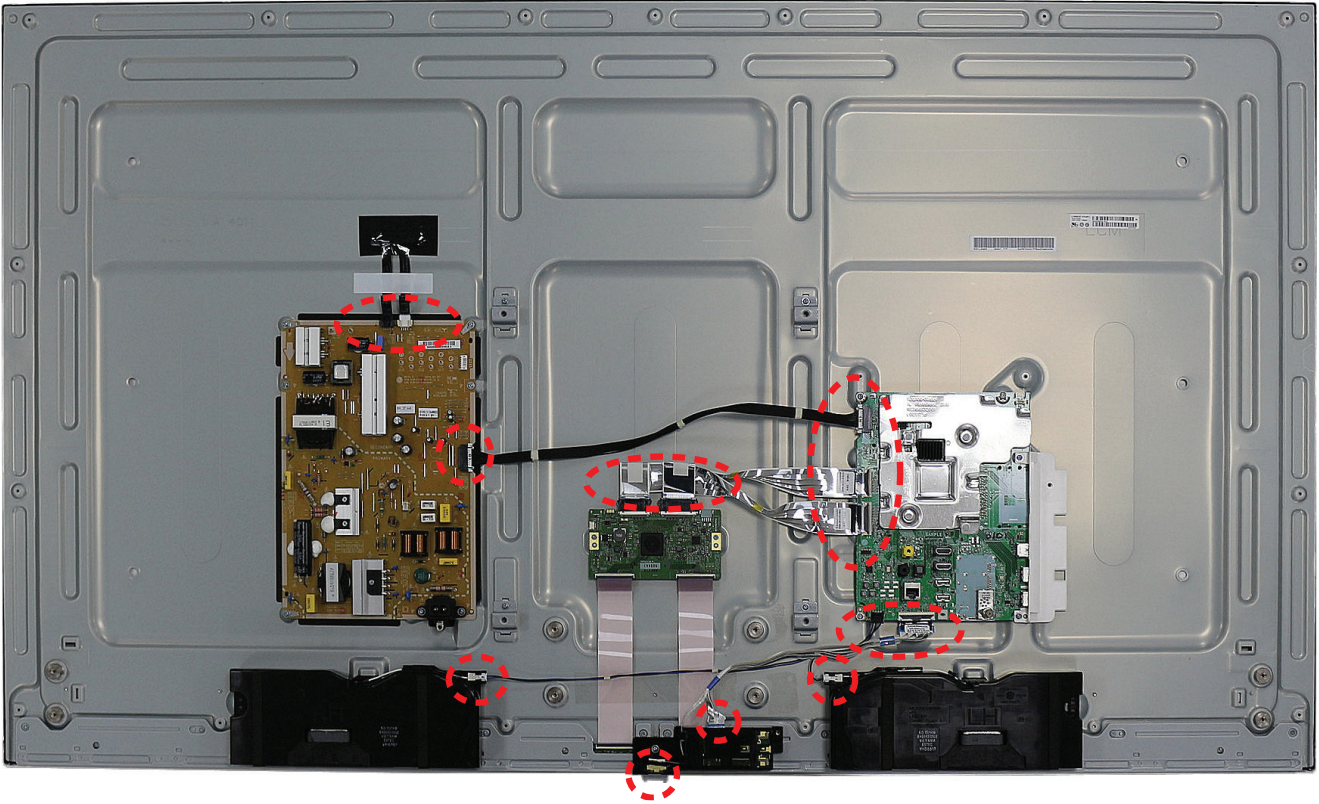
1. After Screw Disassemble, please remove B/C from Module
 - Screw : 20 ea, Latch : 2 ea



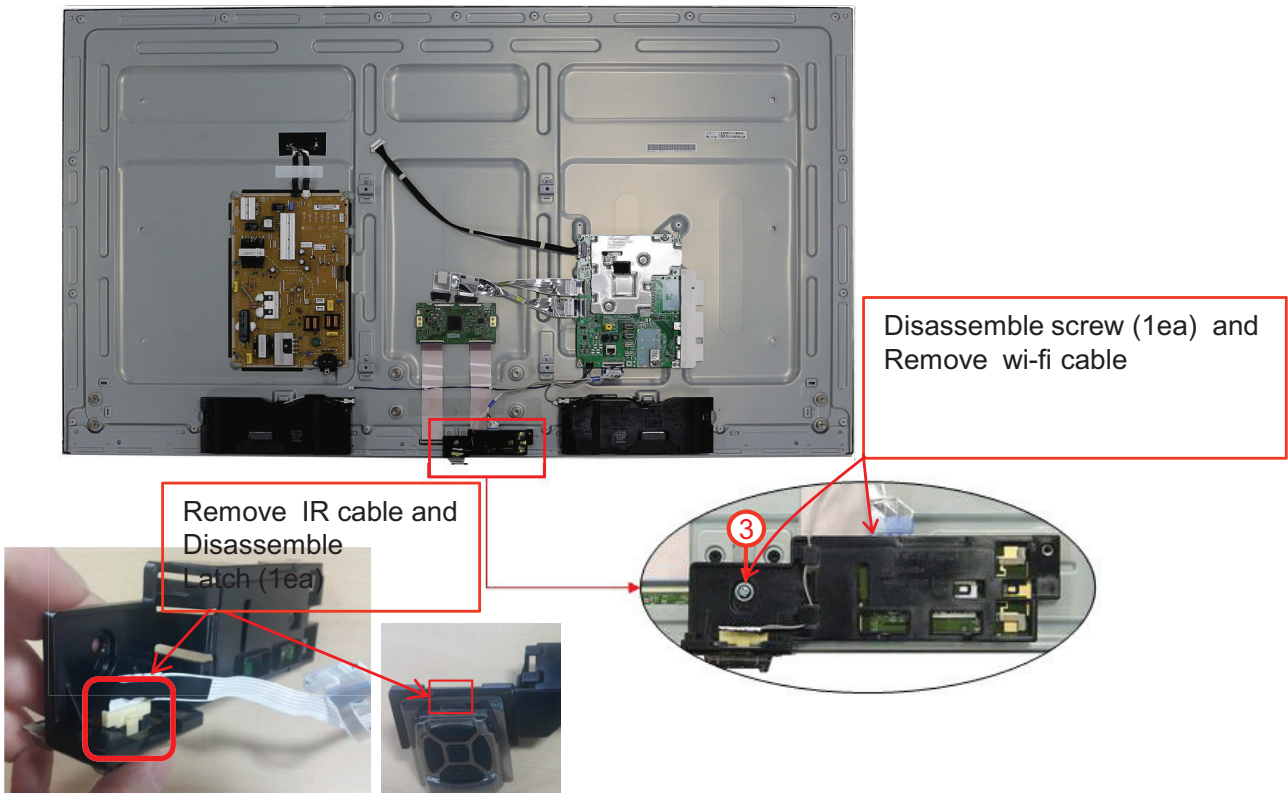
2. Detach Tape



3. Remove all sort of cable

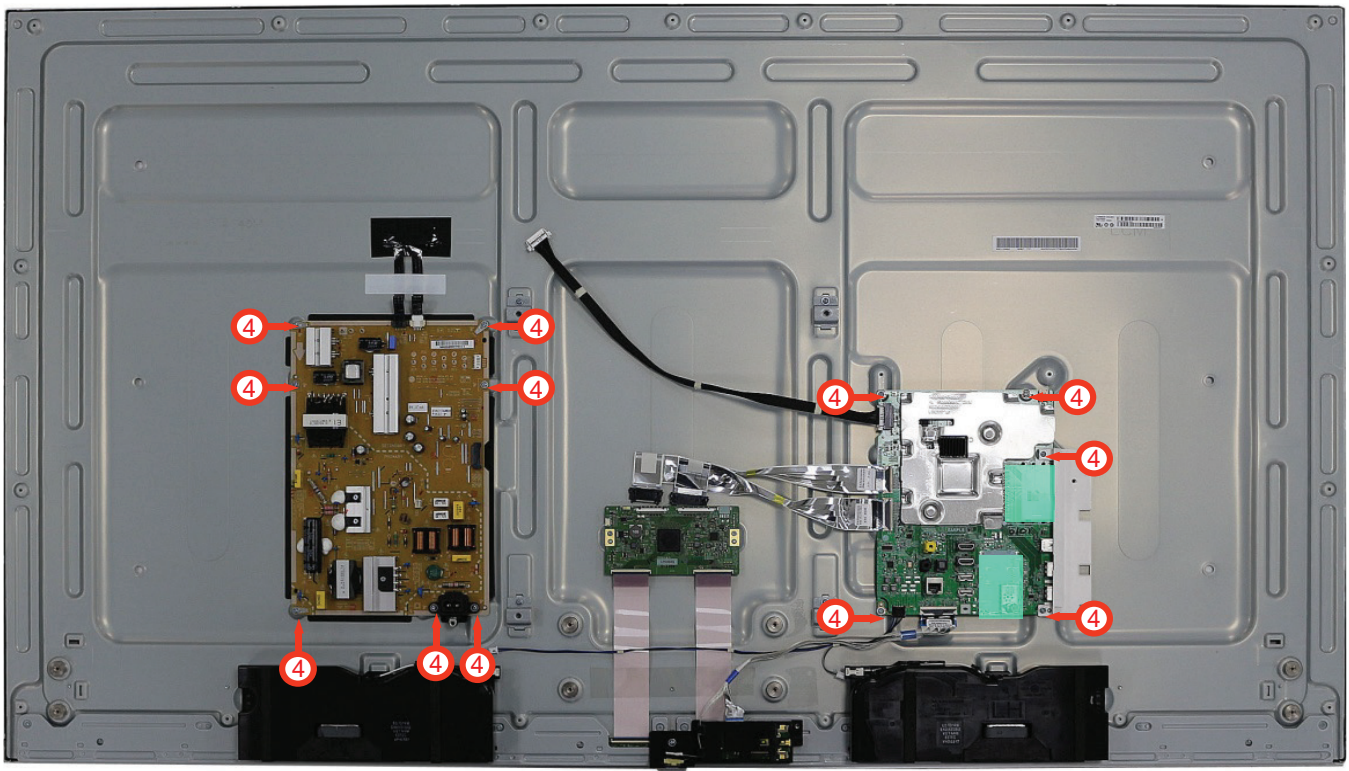


4. IR assy, WiFi PCB assy disassembly

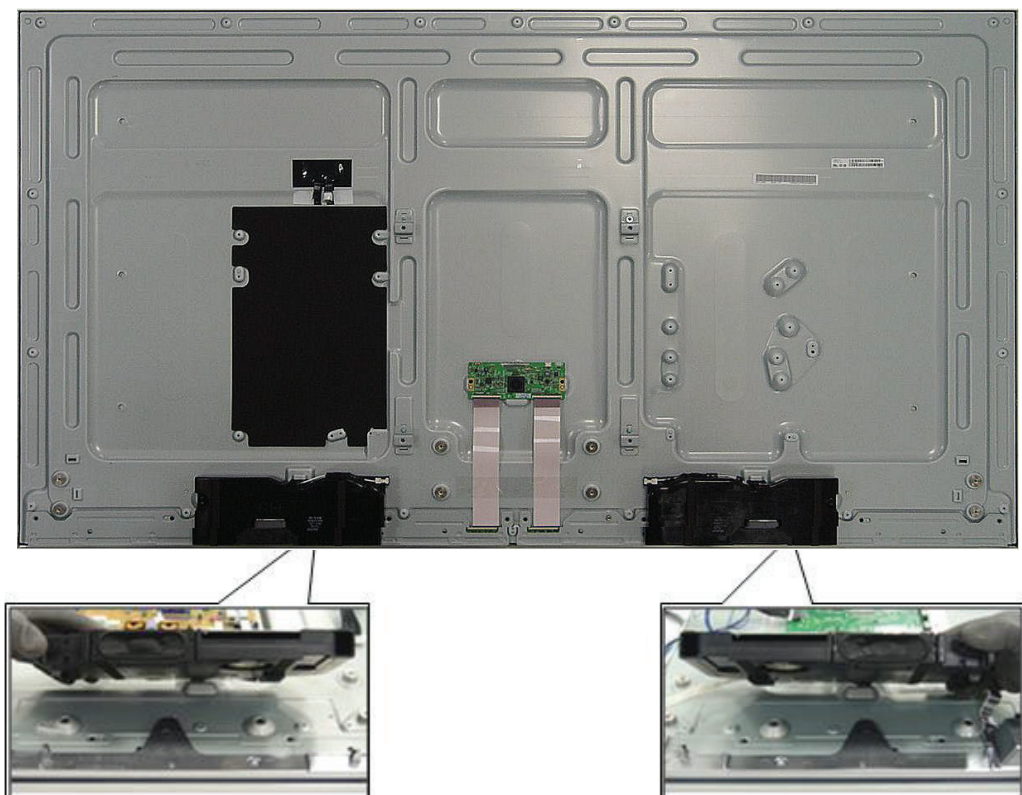


5. Screw disassembly

- Screw : 12 ea

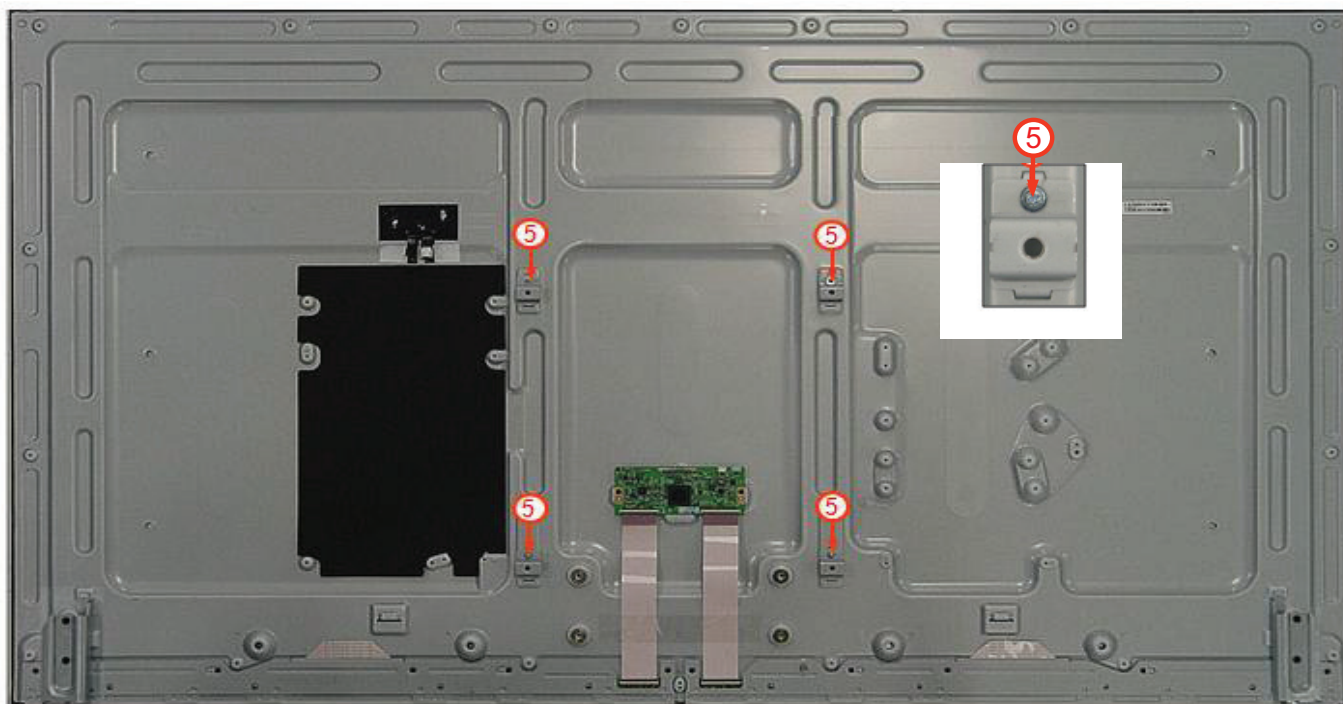


6. Speaker disassembly



7. Screw disassembly

- Screw : 4 ea



TROUBLE SHOOTING GUIDE

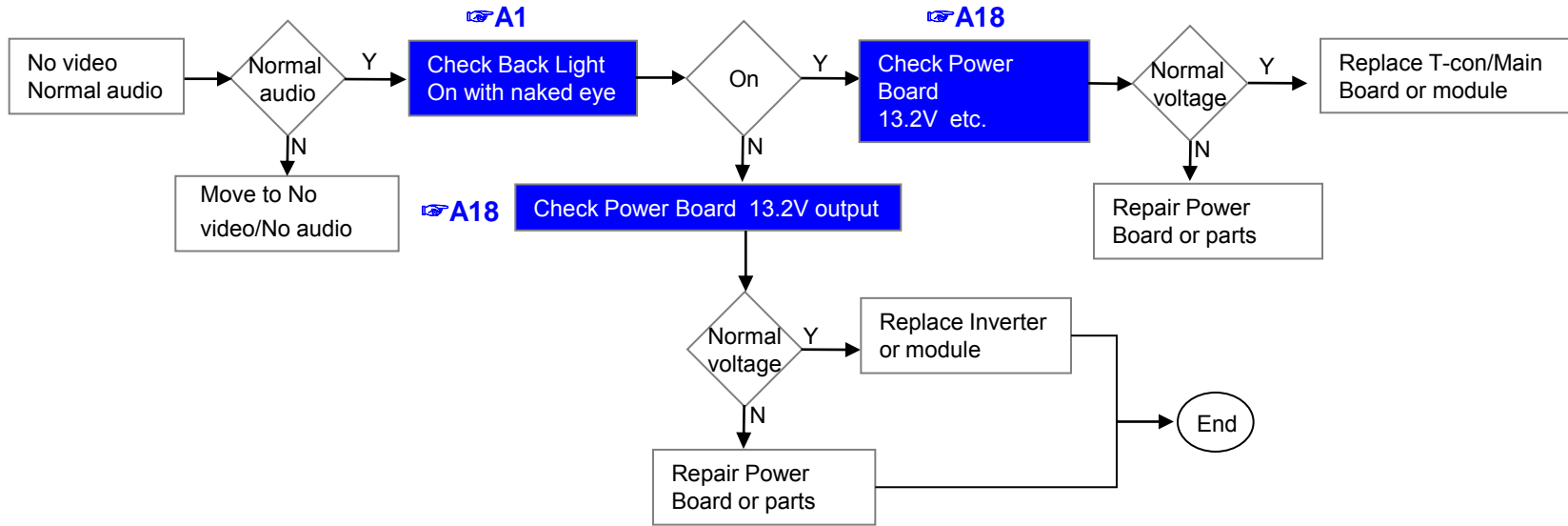
Contents of Standard Repair Process

No.	Error symptom (High category)	Error symptom (Mid category)	Page	Remarks
1	A. Video error	No video/Normal audio	1	
2		No video/No audio	2	
3		Picture broken/ Freezing	3	
4		Color error	4	
5		Vertical/Horizontal bar, residual image, light spot, external device color error	5	
6	B. Power error	No power	6	
7		Off when on, off while viewing, power auto on/off	7	
8	C. Audio error	No audio/Normal video	8	
9		Wrecked audio/discontinuation/noise	9	
10	D. Function error	Remote control & Local switch checking	10	
11		MR15 operating checking	11	
12		Wifi operating checking	12	
13		Camera operating checking	13	
14		External device recognition error	14	
15	E. Noise	Circuit noise, mechanical noise	15	
16	F. Exterior error	Exterior defect	16	

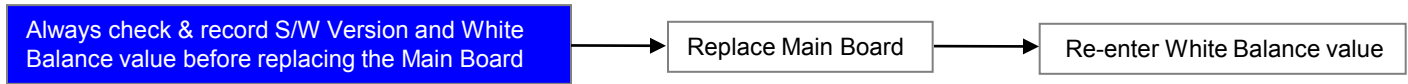
First of all, Check whether there is SVC Bulletin in GSCS System for these model.

Error symptom	A. Video error		Established date	
	No video/ Normal audio		Revised date	1/16

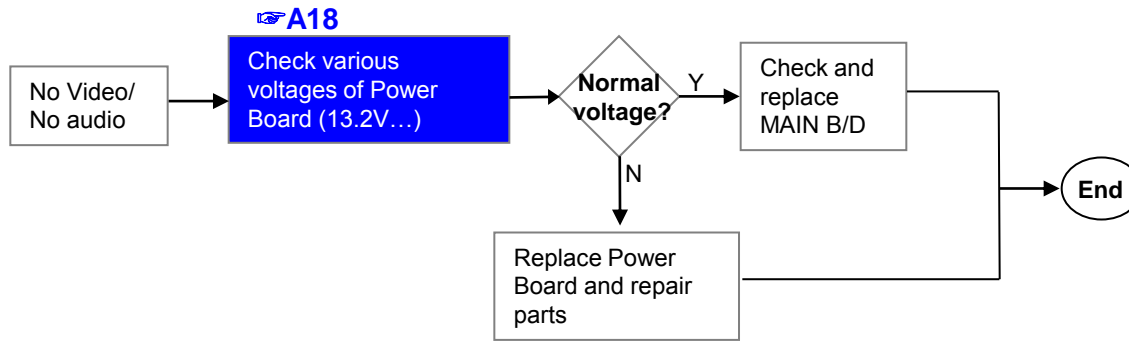
**First of all, Check whether all of cables between board is inserted properly or not.
(Main B/D↔ Power B/D, LVDS or EPI Cable, Speaker Cable, IR B/D Cable,,)**



※Precaution **A4 & A2**



	Error symptom	A. Video error	Established date		
		No video/ No audio	Revised date		2/16

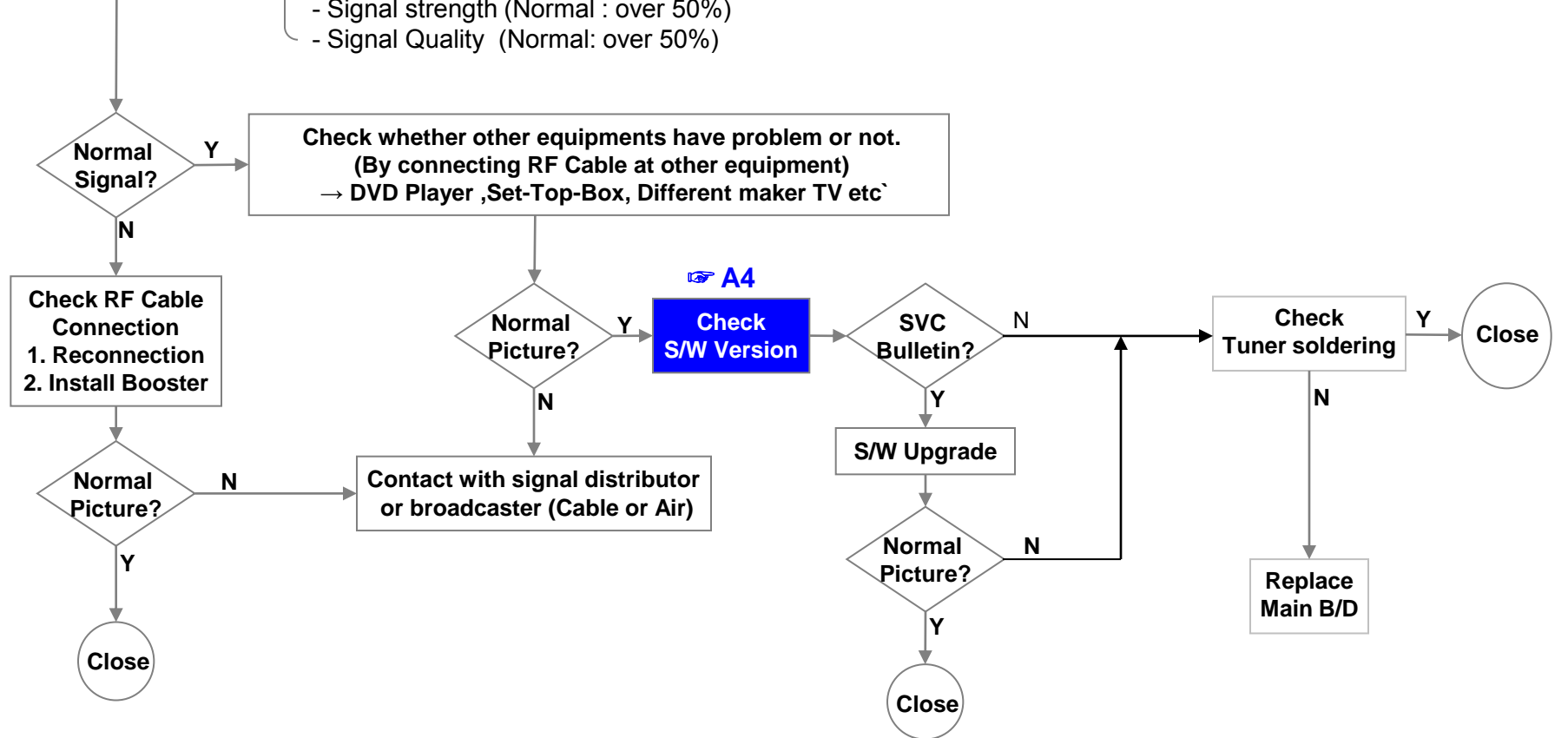


Error symptom	A. Video error		Established date	
	Picture broken/ Freezing		Revised date	3/16

A3

Check RF Signal level

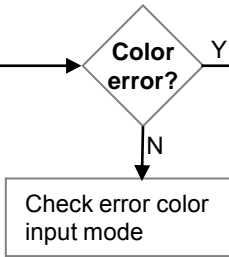
- . By using Digital signal level meter
- . By using Diagnostics menu on OSD
(Advanced → Channels → Channel Tuning → Manual Tuning → Check the Signal)
- Signal strength (Normal : over 50%)
- Signal Quality (Normal: over 50%)



Error symptom	A. Video error		Established date		
	Color error		Revised date		4/16

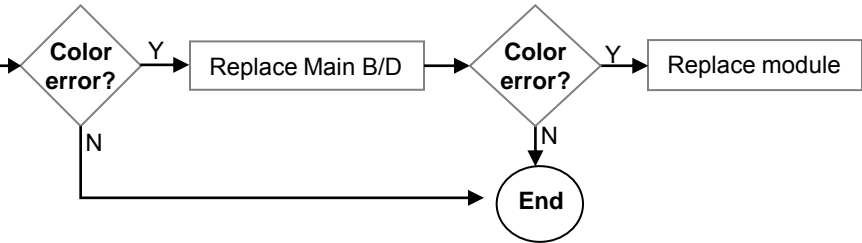
A6

Check color by input
 -External Input
 -COMPONENT
 -AV
 -HDMI



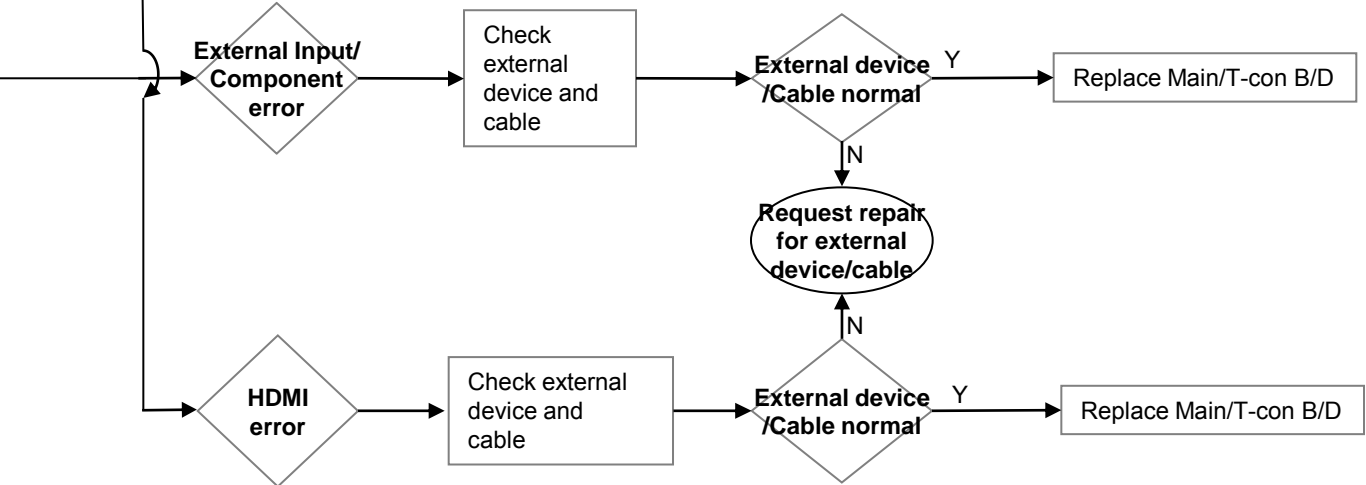
A7

※ Check and replace Link Cable (EPI or Vx1 Cable) and contact condition



A8

Check Test pattern



Error symptom	A. Video error		Established date	
	Vertical / Horizontal bar, residual image, light spot, external device color error		Revised date	5/16

Vertical/Horizontal bar, residual image, light spot

A6

Check color condition by input
 -External Input
 -Component
 -HDMI

Screen normal?

Check external device connection condition

Normal?

A7

Check and replace Link Cable

Screen normal?

Replace Main/T-con B/D

For LGD panel

Replace Main B/D

For other panel

Replace Module

Screen normal?

End

End

A8

Check Test pattern

Replace module

Request repair for external device

External device screen error-Color error

Check S/W Version

Check version

S/W Upgrade

Normal screen?

End

Check screen condition by input
 -External Input
 -Component
 -HDMI/DVI

External Input error

Component error

HDMI/DVI

Connect other external device and cable
 (Check normal operation of External Input, Component, RGB and HDMI/DVI by connecting Jig, pattern Generator, Set-top Box etc.)

Connect other external device and cable
 (Check normal operation of External Input, Component, RGB and HDMI/DVI by connecting Jig, pattern Generator, Set-top Box etc.)

Screen normal?

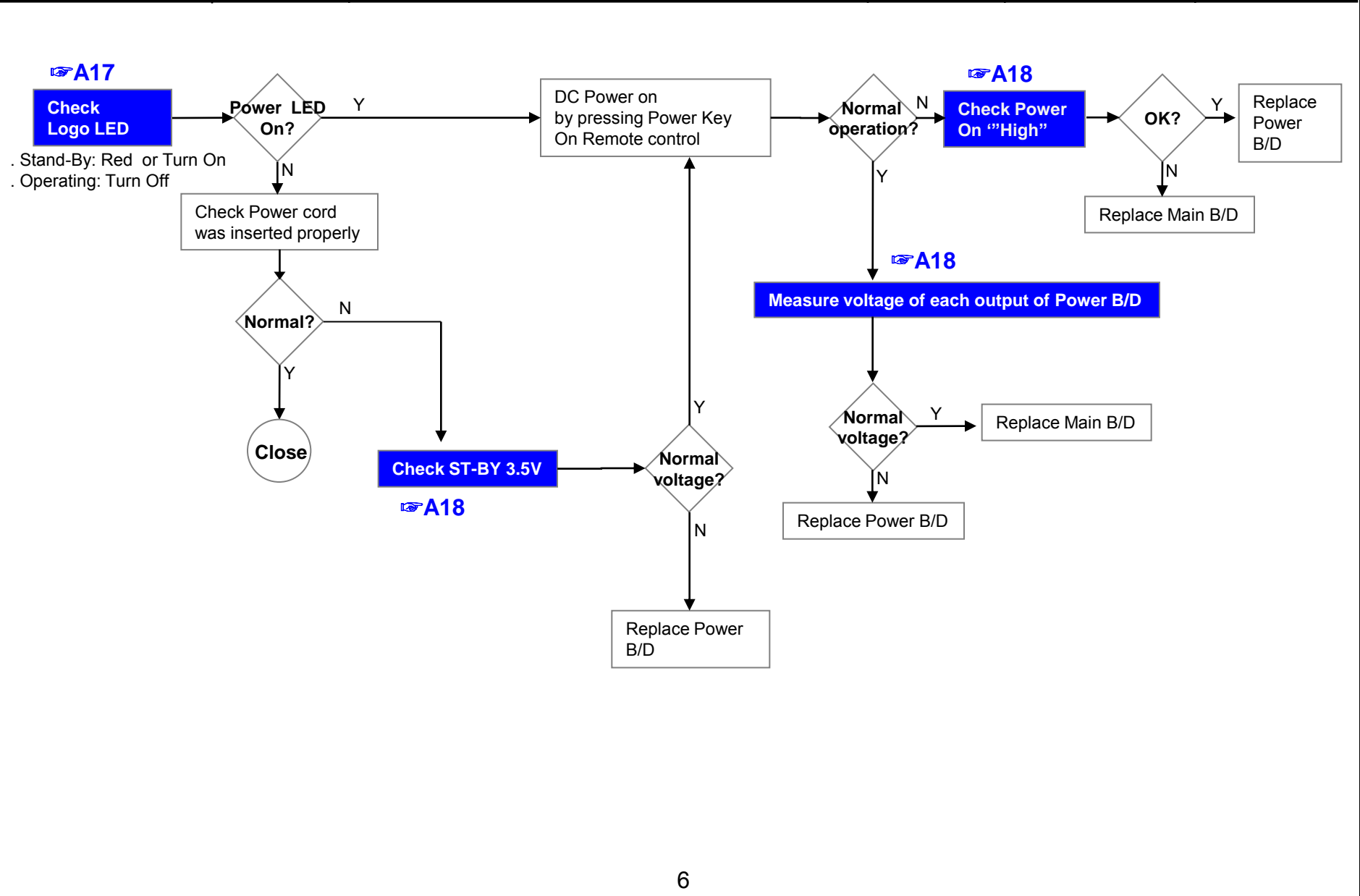
Request repair for external device

Screen normal?

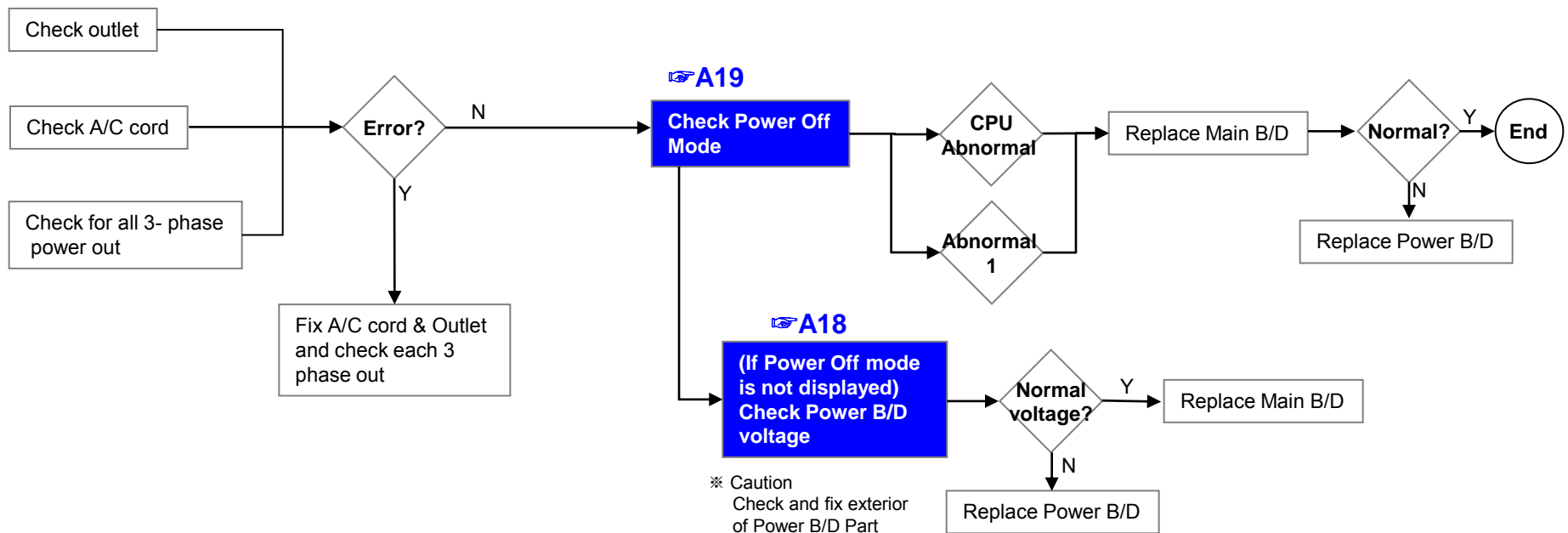
Replace Main/T-con B/D

Replace Main /T-con B/D

	Error symptom	B. Power error	Established date	
		No power	Revised date	6/16



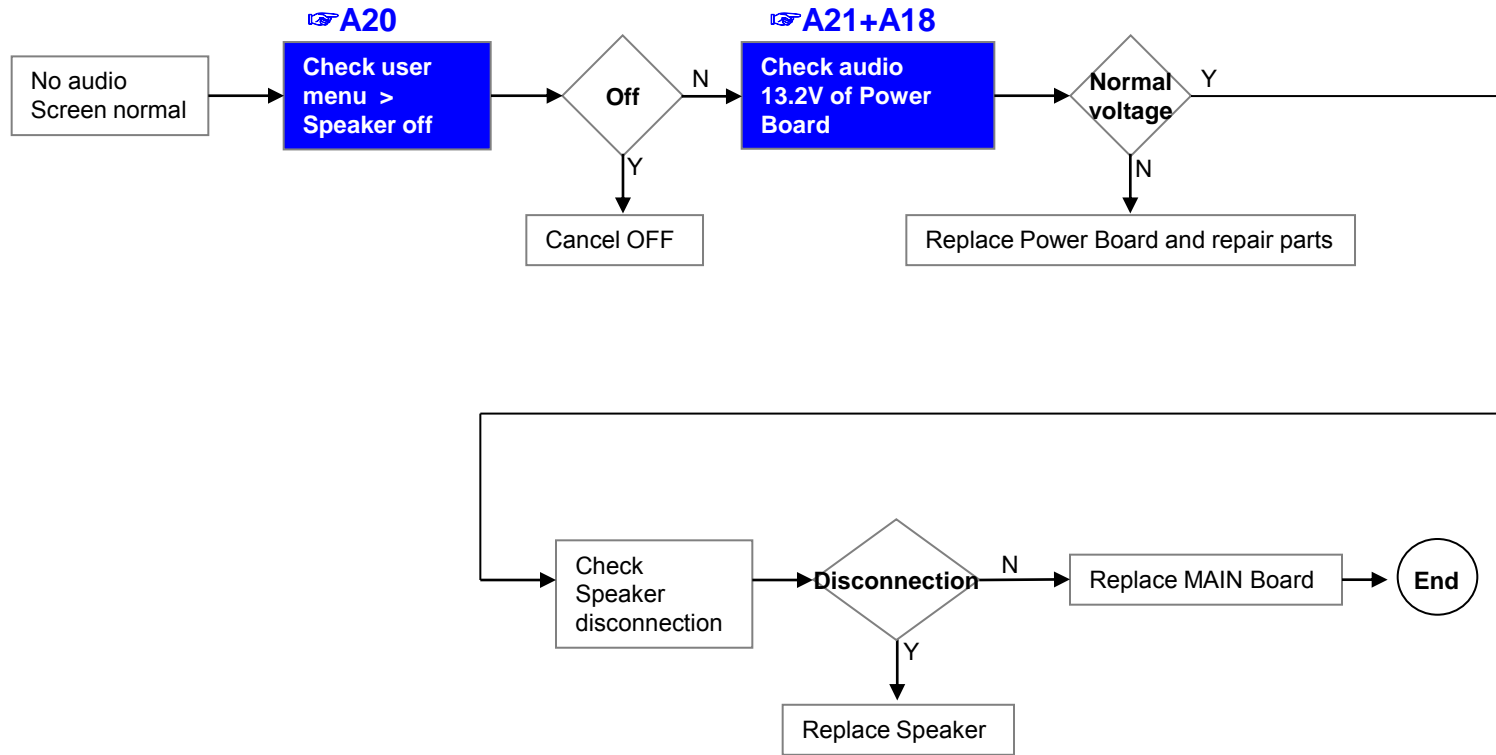
Error symptom	B. Power error	Established date	
	Off when on, off while viewing, power auto on/off	Revised date	7/16



* Please refer to the all cases which can be displayed on power off mode.

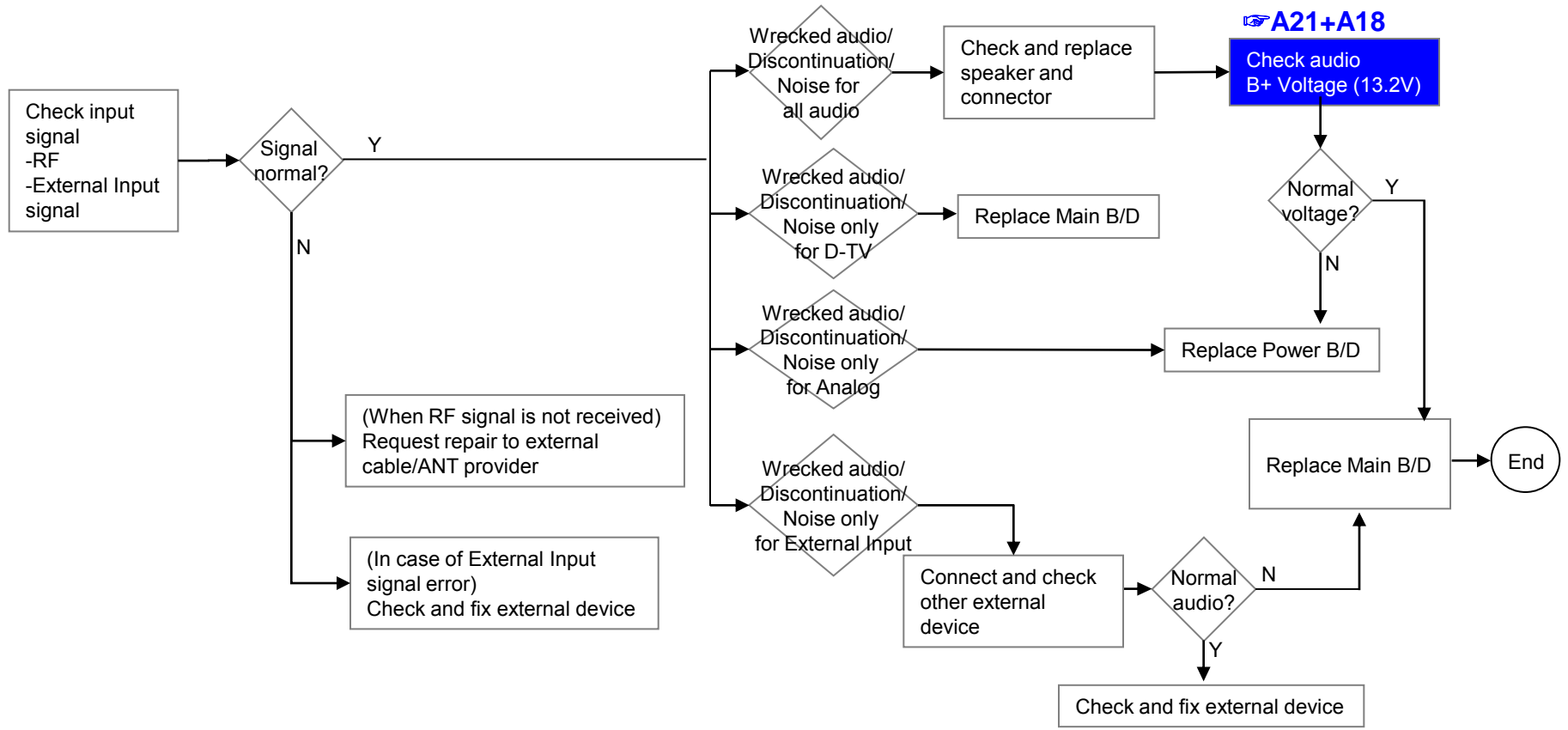
Status	Power off List	Explanation
Normal	"POWEROFF_REMOTEKEY"	Power off by REMOTE CONTROL
	"POWEROFF_OFFTIMER"	Power off by OFF TIMER
	"POWEROFF_SLEEPTIMER"	Power off by SLEEP TIMER
	"POWEROFF_INSTOP"	Power off by INSTOP KEY
	"POWEROFF_AUTOOFF"	Power off by AUTO OFF
	"POWEROFF_ONTIMER"	Power off by ON TIMER
	"POWEROFF_RS232C"	Power off by RS232C
	"POWEROFF_RESREC"	Power off by Reserved Record
	"POWEROFF_RECEND"	Power off by End of Recording
	"POWEROFF_SWDOWN"	Power off by S/W Download
Abnormal	"POWEROFF_UNKNOWN"	Power off by unknown status except listed case
	"POWEROFF_ABNORMAL1"	Power off by abnormal status except CPU trouble
	"POWEROFF_CPUABNORMAL"	Power off by CPU Abnormal

	Error symptom	C. Audio error	Established date	
		No audio/ Normal video	Revised date	8/16



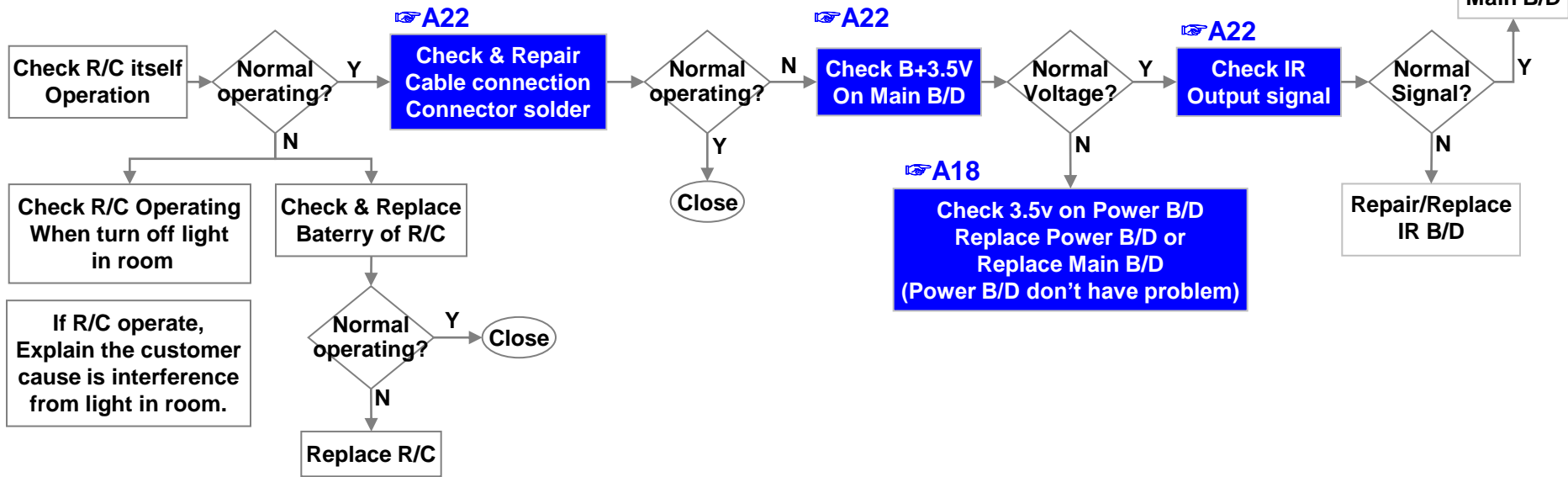
Error symptom	C. Audio error		Established date	
	Wrecked audio/ discontinuation/noise		Revised date	9/16

→ abnormal audio/discontinuation/noise is same after “Check input signal” compared to No audio



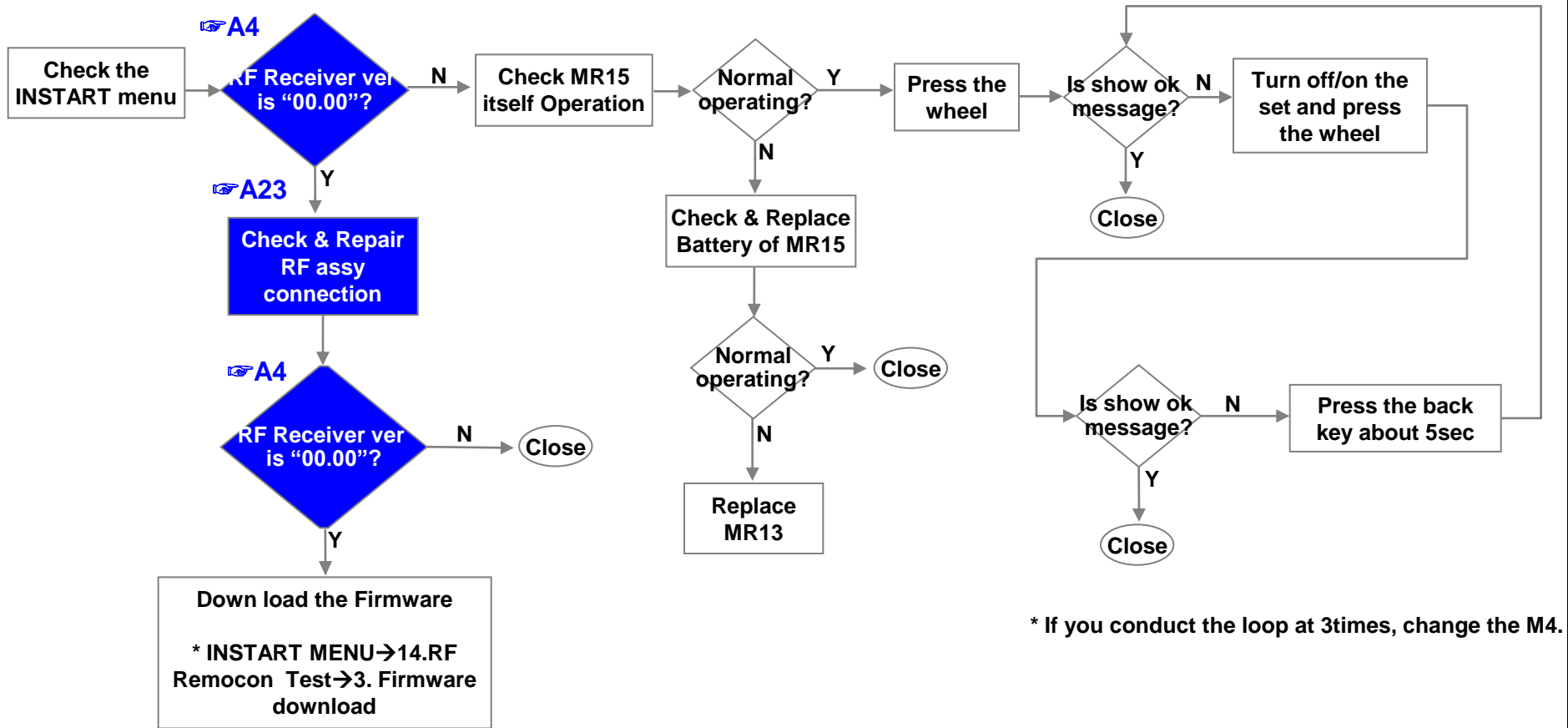
Error symptom	D. Function error		Established date	
	Remote control & Local switch checking		Revised date	10/16

1. Remote control(R/C) operating error



	Error symptom	D. Function error	Established date		
		MR13 operating checking	Revised date		11/16

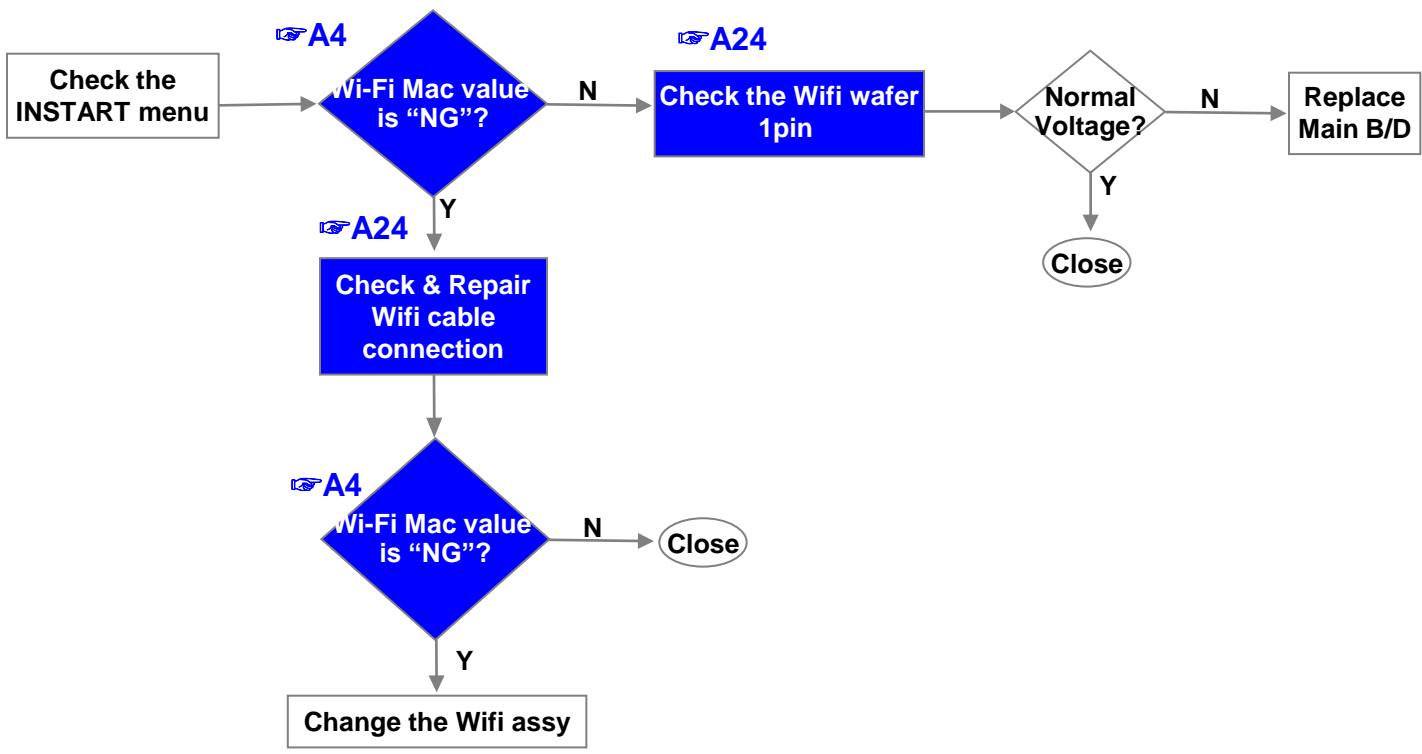
2. MR15(Magic Remocon) operating error



* If you conduct the loop at 3times, change the M4.

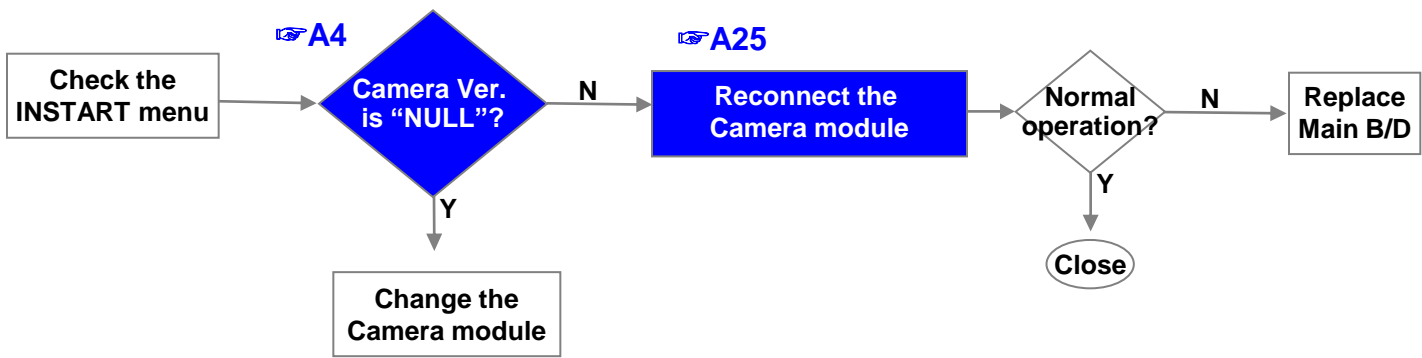
	Error symptom	D. Function error	Established date	
		Wifi operating checking	Revised date	12/16

3.Wifi operating error

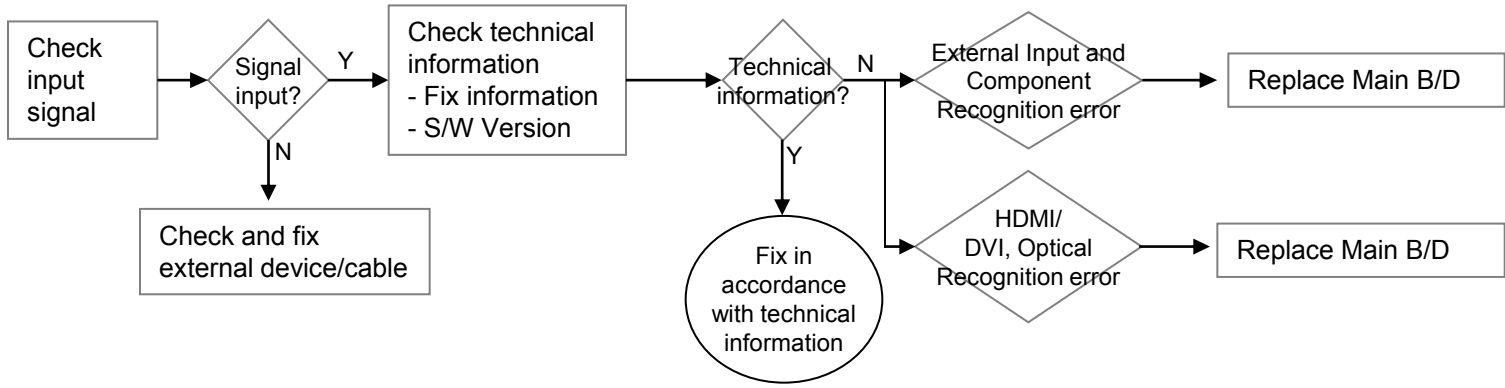


	Error symptom	D. Function error	Established date	
		Camera operating checking	Revised date	13/16

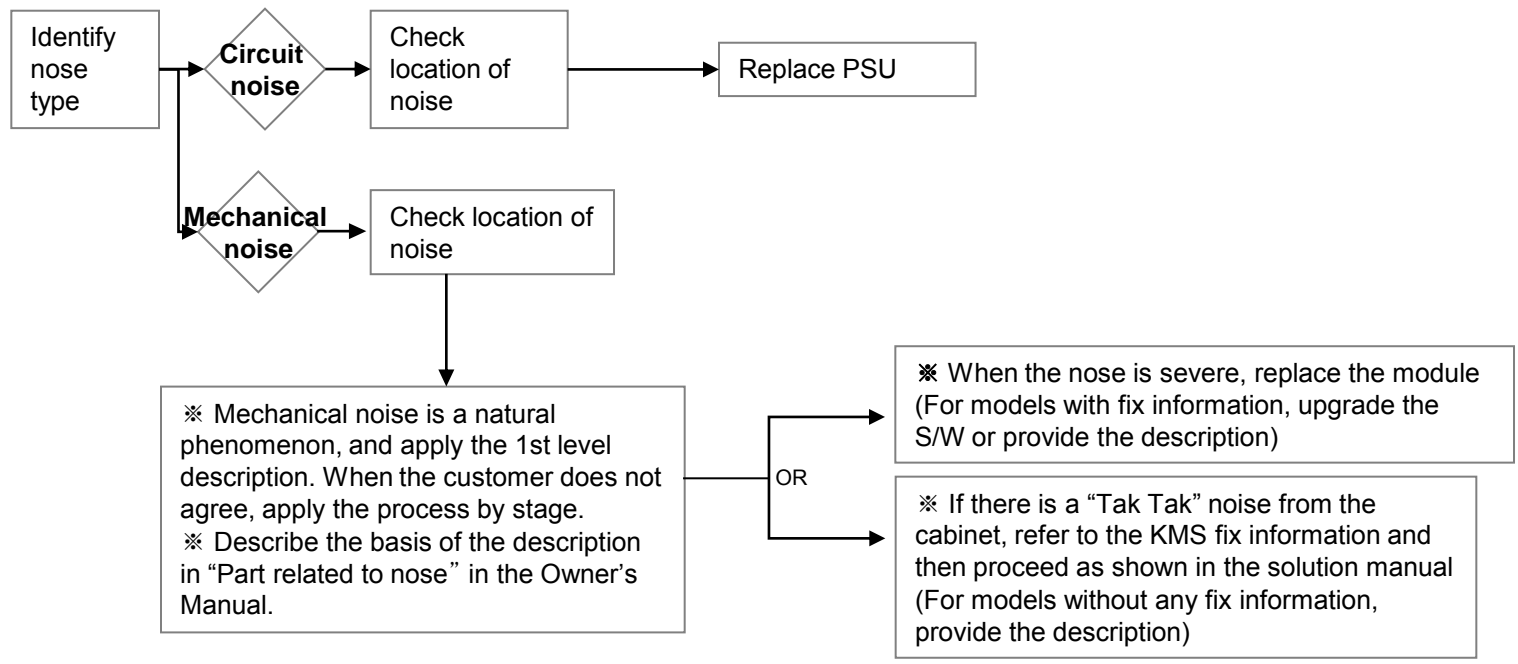
4.Camera operating error



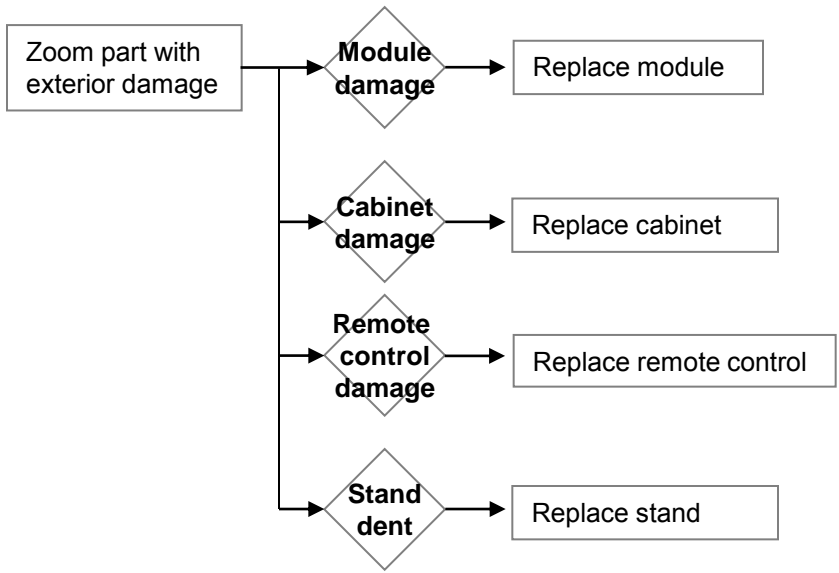
	Error symptom	D. Function error	Established date		
		External device recognition error	Revised date		14/16



	Error symptom	E. Noise	Established date		
		Circuit noise, mechanical noise	Revised date		15/16



	Error symptom	F. Exterior defect	Established date		
		Exterior defect	Revised date		16/16



Contents of Standard Repair Process Detail Technical Manual

No.	Error symptom	Content	Page	Remarks
1	A. Video error_ No video/Normal audio	Check LCD back light with naked eye	A1	
2		Check White Balance value	A2	
3	A. Video error_ video error /Video lag/stop	TUNER input signal strength checking method	A3	
4		Version checking method	A4	
5		Tuner Checking Part	A5	
6	A. Video error _Vertical/Horizontal bar, residual image, light spot	Connection diagram	A6	
7	A. Video error_ Color error	Check Link Cable (Vx1/EPI) reconnection condition	A7	
8		Adjustment Test pattern – ADJ Key	A8	
9	<Appendix> Defected Type caused by T-Con/ Inverter/ Module	Exchange Main Board (1)	A-1/5	
10		Exchange Main Board (2)	A-2/5	
11		Exchange Power Board (PSU)	A-3/5	
12		Exchange Module (1)	A-4/5	
13		Exchange Module (2)	A-5/5	

Continue to the next page

Contents of Standard Repair Process Detail Technical Manual

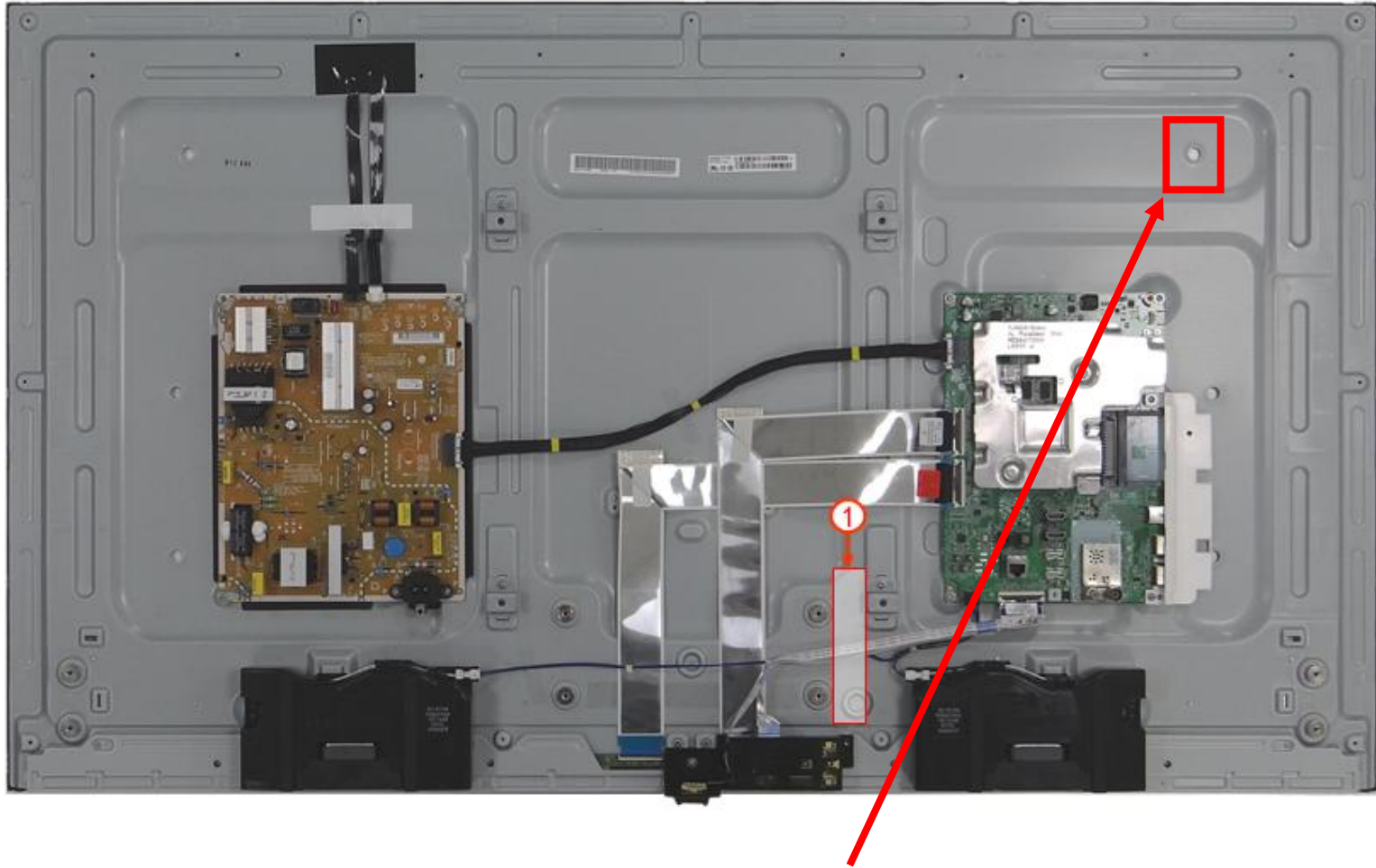
Continued from previous page

No.	Error symptom	Content	Page	Remarks
14	B. Power error_ No power	Check front display LED	A9	
15		Check power input Voltage & ST-BY 3.5V	A10	
16	B. Power error_Off when on, off while viewing	POWER OFF MODE checking method	A11	
17	C. Audio error_ No audio/Normal video	Checking method in menu when there is no audio	A12	
18		Voltage and speaker checking method when there is no audio	A13	
19	D. Function error	Remote control operation checking method	A14	
20		Motion Remote operation checking method	A15	

Standard Repair Process Detail Technical Manual

	Error symptom	A. Video error_No video/Normal audio	Established date		
	Content	Check LCD back light with naked eye	Revised date		A1

<49SJ81>



After turning on the power and disassembling the case, check with the naked eye, whether you can see light from locations.

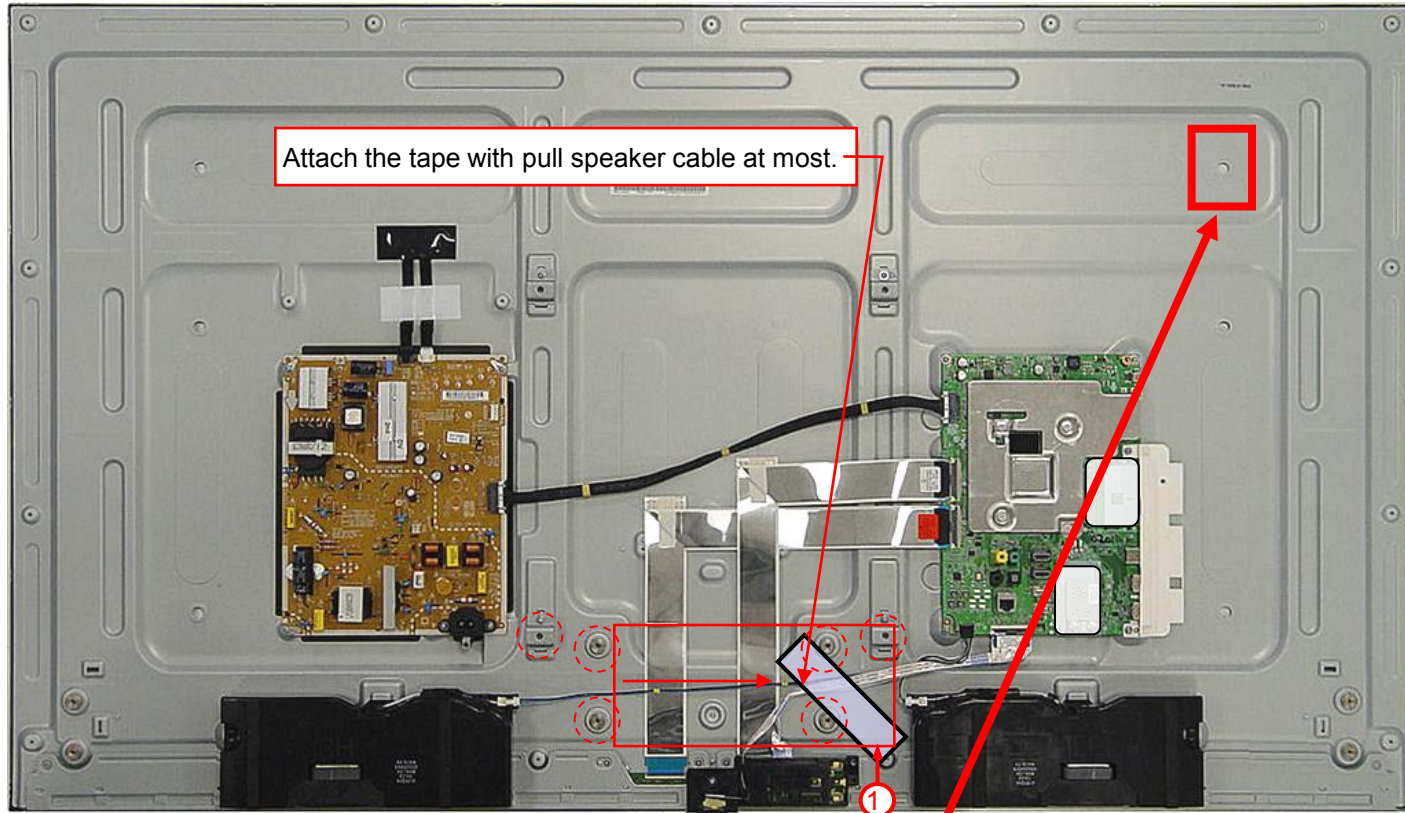
A1



Standard Repair Process Detail Technical Manual

Error symptom	A. Video error_No video/Normal audio	Established date		
Content	Check LCD back light with naked eye	Revised date		A1

<55SJ81>



Attach the tape with pull speaker cable at most.

After turning on the power and disassembling the case, check with the naked eye, whether you can see light from locations.

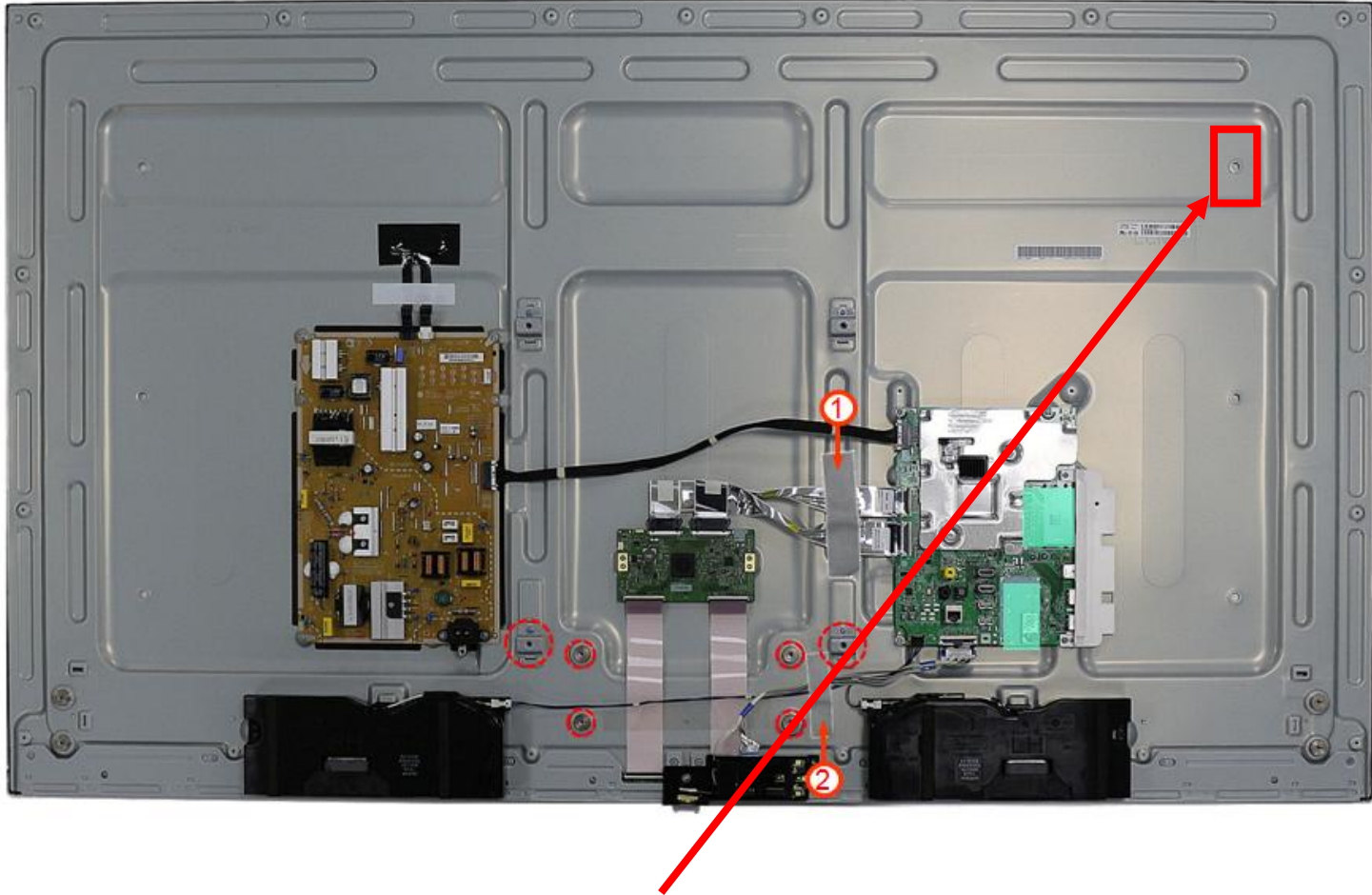
A1



Standard Repair Process Detail Technical Manual

	Error symptom	A. Video error_No video/Normal audio	Established date		
	Content	Check LCD back light with naked eye	Revised date		A1

<60SJ81>



After turning on the power and disassembling the case, check with the naked eye, whether you can see light from locations.

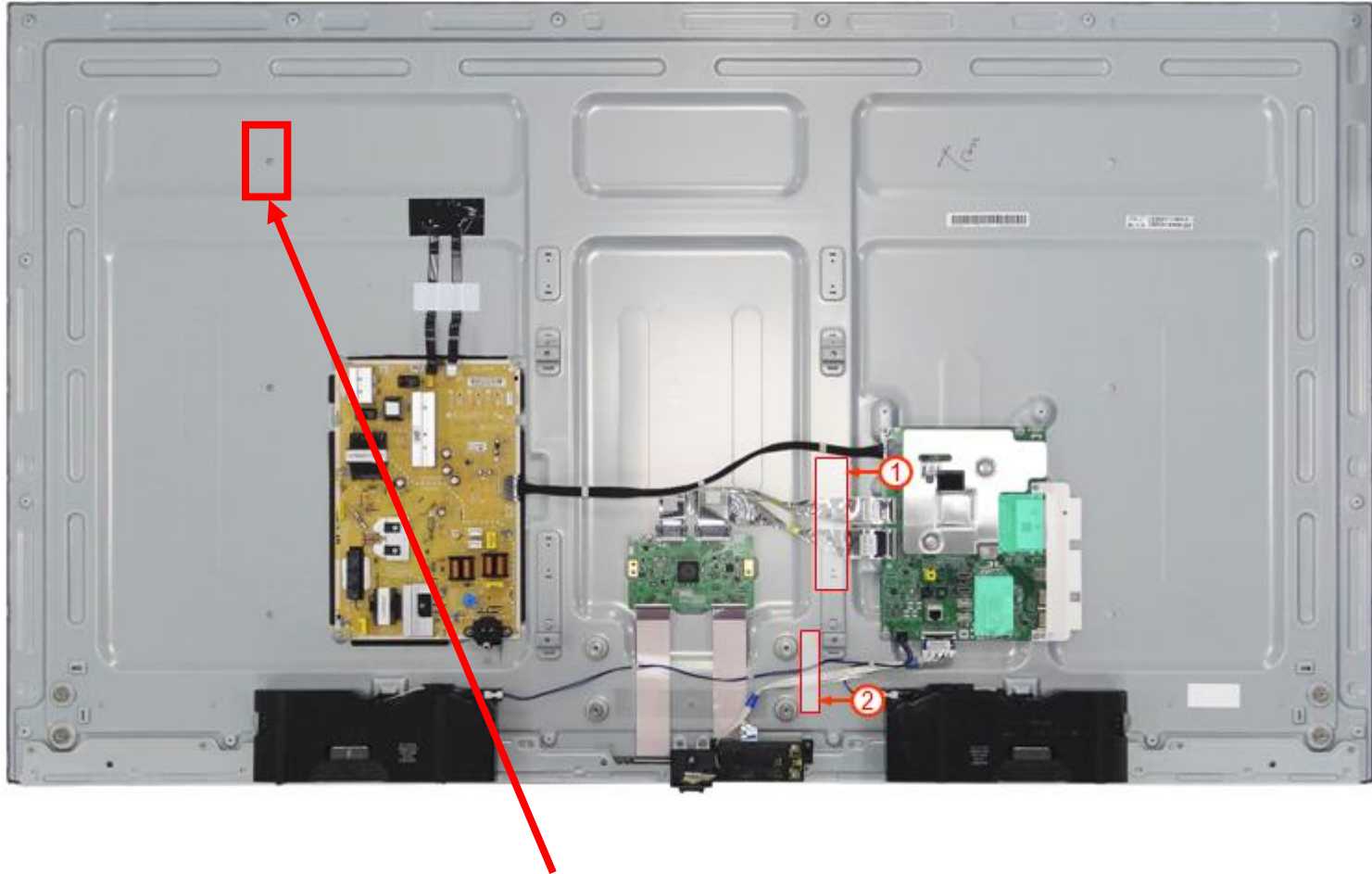
A1



Standard Repair Process Detail Technical Manual

	Error symptom	A. Video error_No video/Normal audio	Established date		
	Content	Check LCD back light with naked eye	Revised date		A1

<65SJ81>



After turning on the power and disassembling the case, check with the naked eye, whether you can see light from locations.

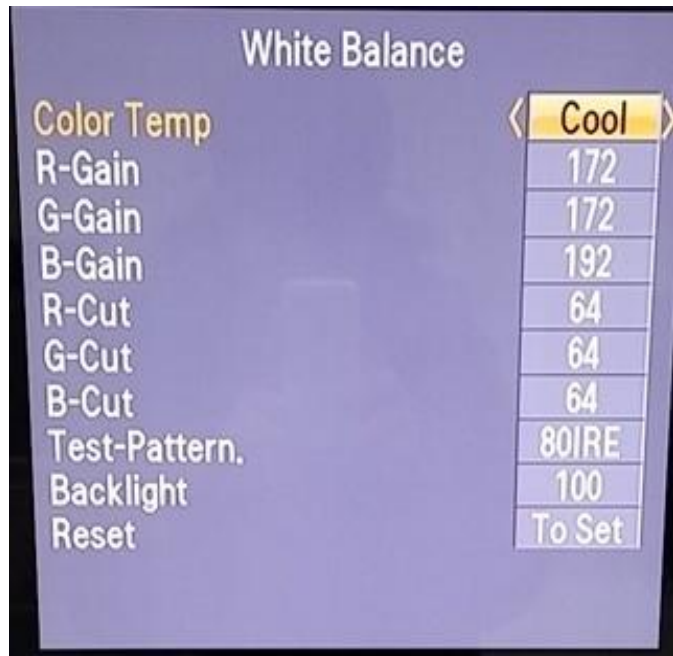
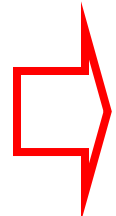
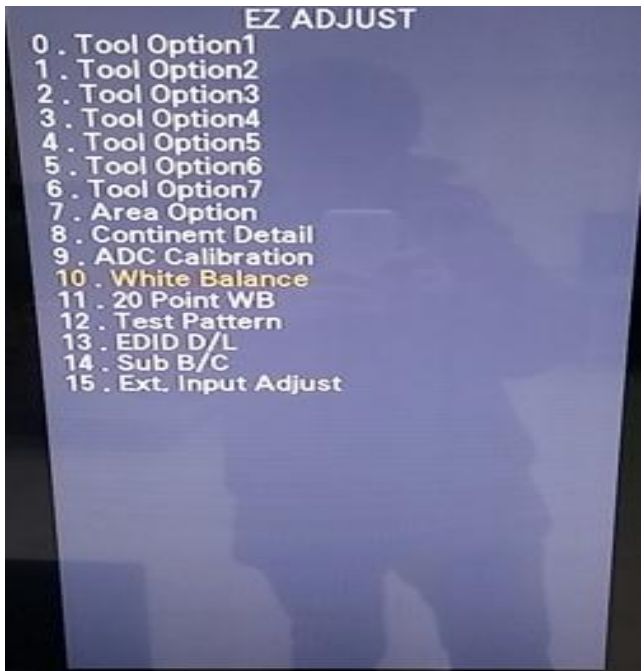
A1



Standard Repair Process Detail Technical Manual

	Error symptom	A. Video error_No video/Normal audio	Established date		
	Content	Check White Balance value	Revised date		A2

<ALL MODELS>



Entry method

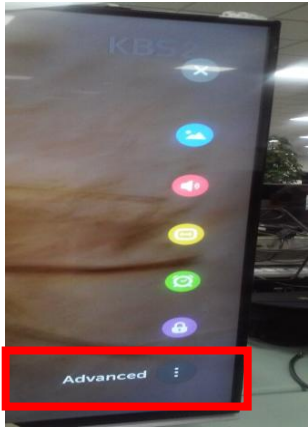
1. Press the ADJ button on the remote control for adjustment.
2. Enter into White Balance of item 10.
3. After recording the R, G, B (GAIN, Cut) value of Color Temp (Cool/Medium/Warm), re-enter the value after replacing the MAIN BOARD.



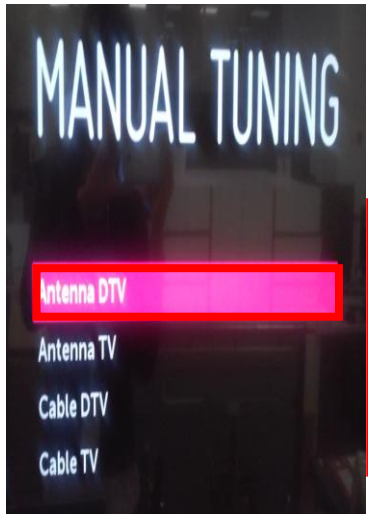
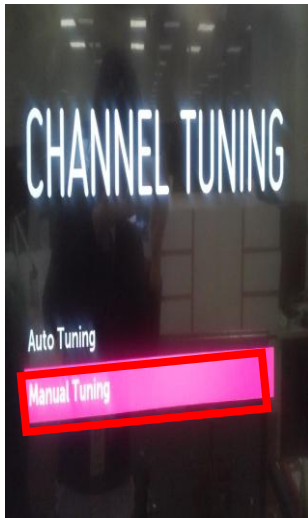
Standard Repair Process Detail Technical Manual

	Error symptom	A. Video error_Video error, video lag/stop	Established date		
	Content	TUNER input signal strength checking method	Revised date		A3

<ALL MODELS>



Advanced → Channels → Channel Tuning → Manual Tuning



When the signal is strong, use the attenuator (-10dB, -15dB, -20dB etc.)



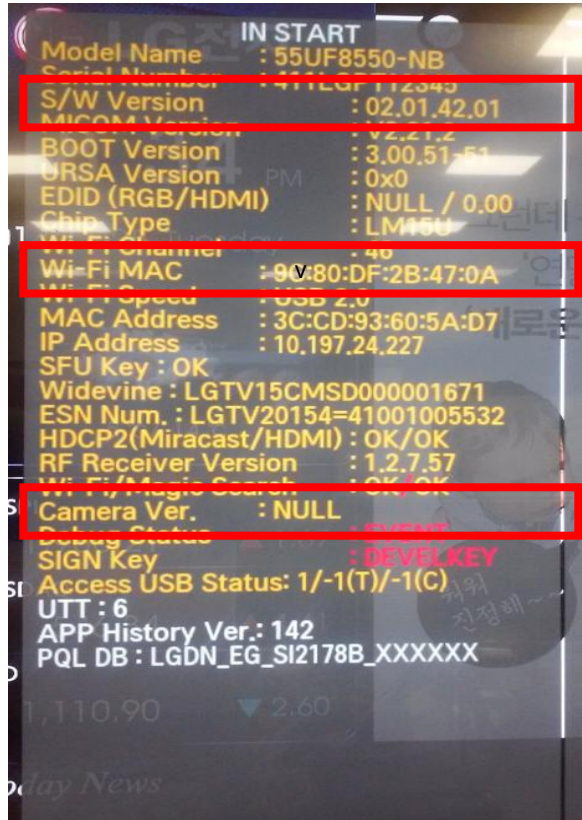
Standard Repair Process Detail Technical Manual

	Error symptom	A. Video error_Video error, video lag/stop	Established date		
	Content	Version checking method	Revised date		A4

<ALL MODELS>

1. Checking method for remote control for adjustment

Version



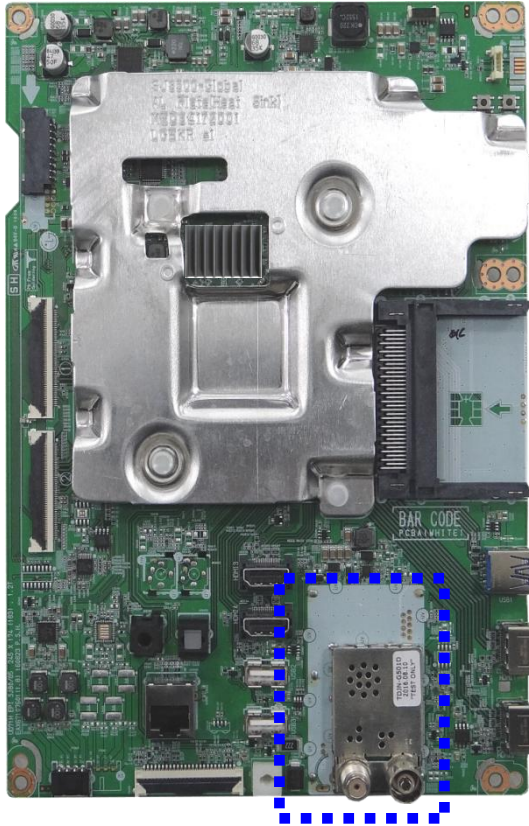
Press the IN-START with the remote control for adjustment

Standard Repair Process Detail Technical Manual

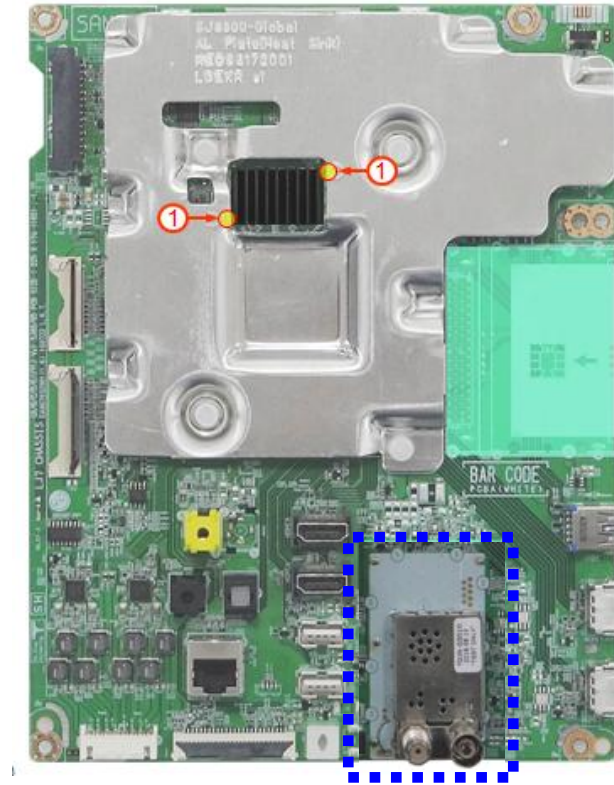
	Error symptom	A. Video error_Video error, video lag/stop	Established date		
	Content	TUNER checking part	Revised date		A5

<ALL MODELS>

<49"55">



<60"65">



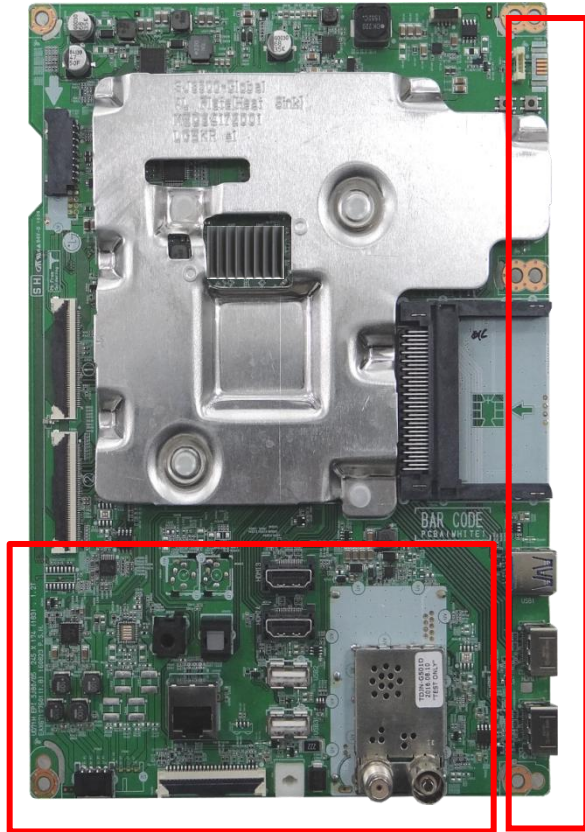
Checking method:

1. Check the signal strength or check whether the screen is normal when the external device is connected.
2. After measuring each voltage from power supply, finally replace the MAIN BOARD.

Standard Repair Process Detail Technical Manual

	Error symptom	A. Video error _ Vertical/Horizontal bar, residual image, light spot	Established date		
	Content	Connection diagram (1)	Revised date		A6

<ALL MODELS>



As the part connecting to the external input, check the screen condition by signal

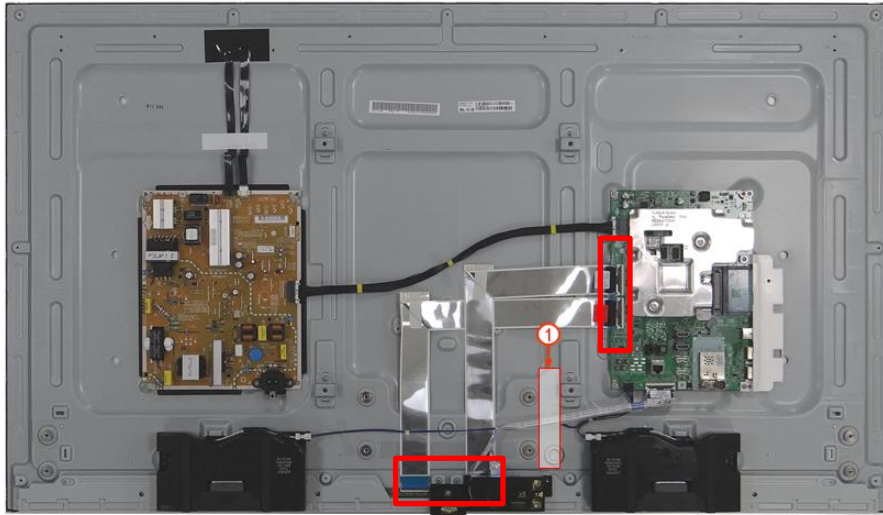


Standard Repair Process Detail Technical Manual

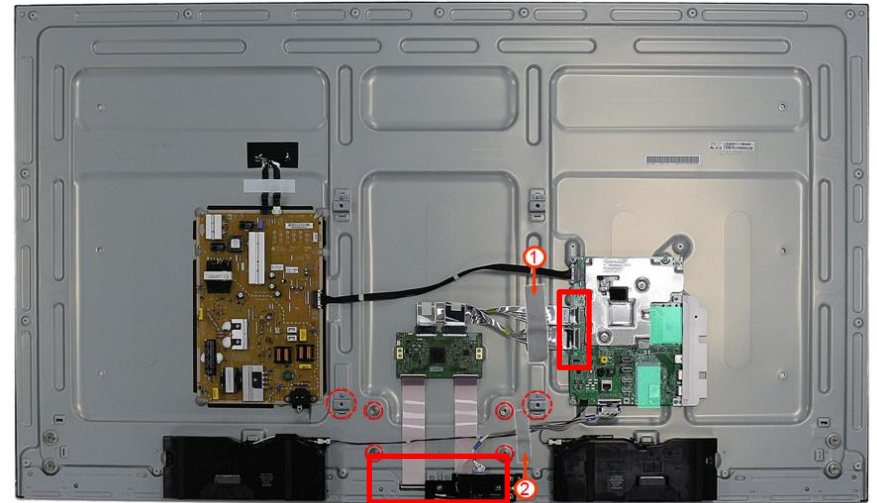
	Error symptom	A. Video error_Color error	Established date		
	Content	Check Link Cable(VX1/EPI) reconnection condition	Revised date		A7

<SJ81>

<49"55">



<60"65">

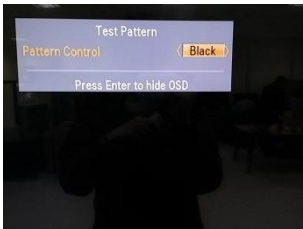
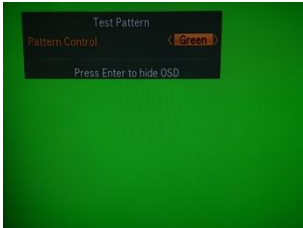
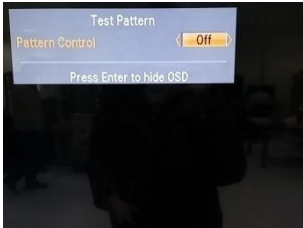
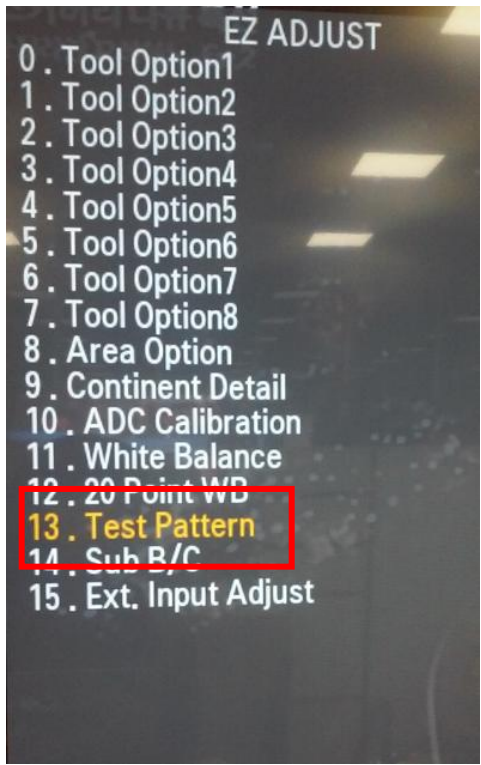


Check the contact condition of the Link Cable, especially dust or mis insertion.



Standard Repair Process Detail Technical Manual

	Error symptom	A. Video error_Color error	Established date	
	Content	Adjustment Test pattern - ADJ Key	Revised date	A8



You can view 6 types of patterns using the ADJ Key

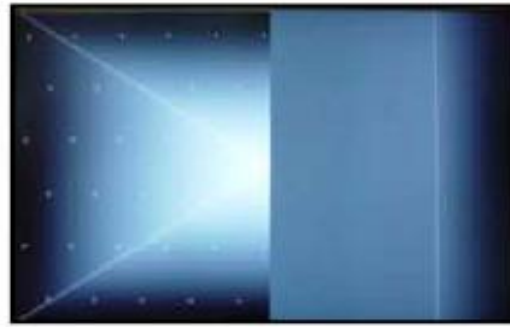
Checking item : 1. Defective pixel 2. Residual image 3. MODULE error (ADD-BAR,SCAN BAR..)
4.Video error (Classification of MODULE or Main-B/D!)



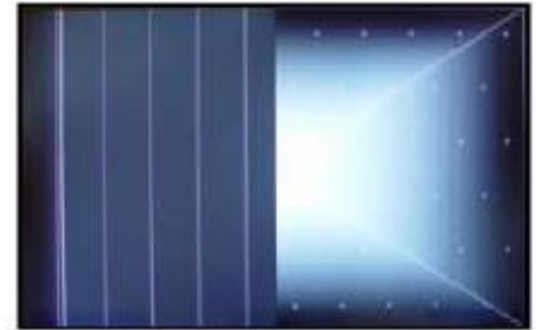
Appendix : Exchange Main Board (1)



Solder defect, CNT Broken



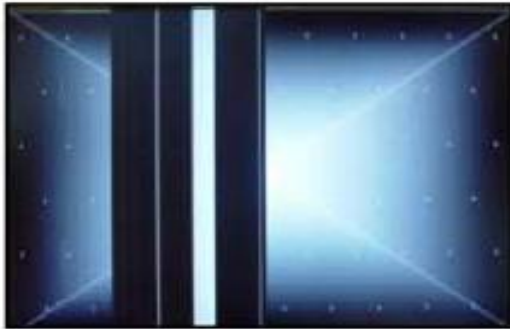
Solder defect, CNT Broken



Solder defect, CNT Broken



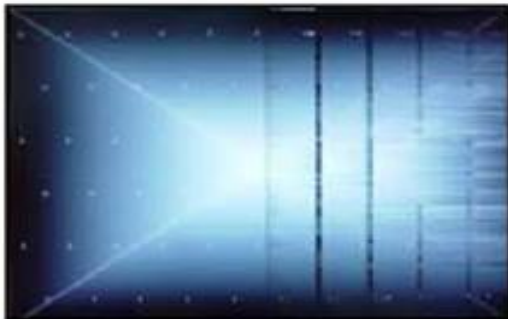
Solder defect, CNT Broken



Solder defect, CNT Broken



Abnormal Power Section



Solder defect, Short/Crack

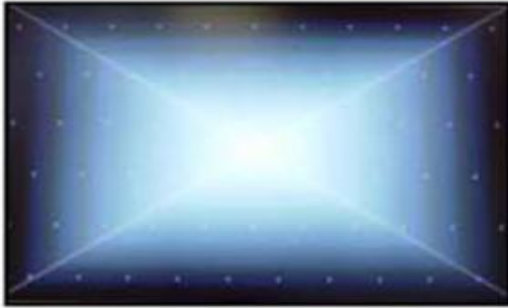


Abnormal Power Section



Solder defect, Short/Crack

Appendix : Exchange Main Board (2)



Abnormal Power Section



Abnormal Power Section



Solder defect, Short/Crack



Solder defect, Short/Crack



Fuse Open, Abnormal power section



Abnormal Display



GRADATION



Noise



GRADATION

Appendix : Exchange Power Board (PSU)



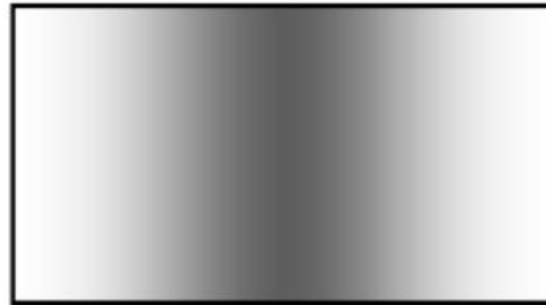
No Light



Dim Light



Dim Light



Dim Light



No picture/Sound Ok

Appendix : Exchange the Module (1)



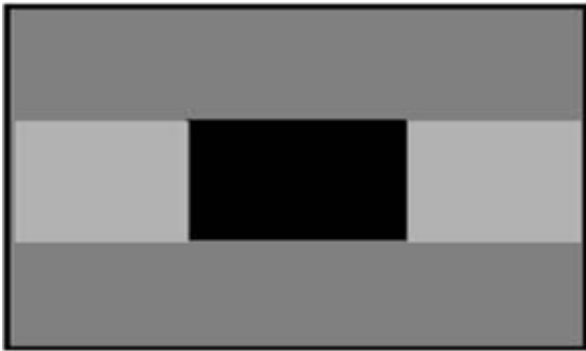
Press damage



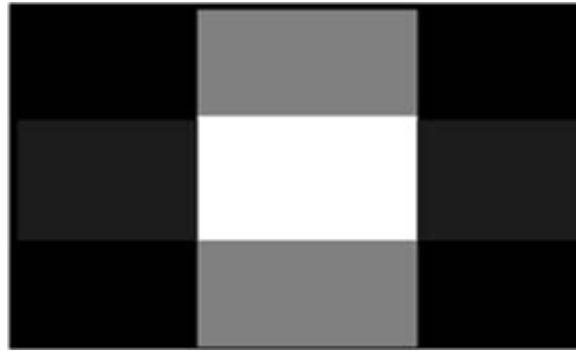
Press damage



Press damage



Crosstalk

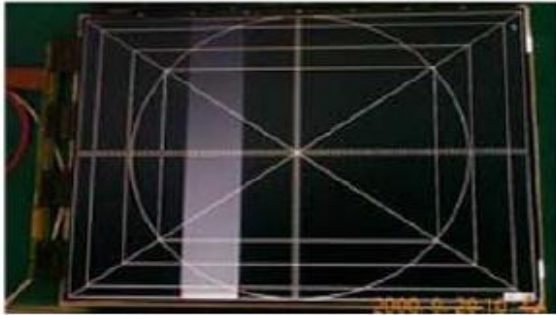


Crosstalk

Un-repairable Cases

In this case please exchange the module.

Appendix : Exchange the Module (2)



Vertical Block
Source TAB IC Defect



Vertical Line
Source TAB IC Defect



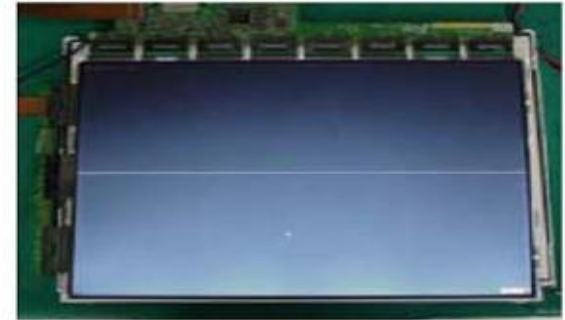
Vertical Block
Source TAB IC Defect



Horizontal Block
Gate TAB IC Defect



Horizontal Block
Gate TAB IC Defect



Horizontal line
Gate TAB IC Defect



Horizontal Block
Gate TAB IC Defect

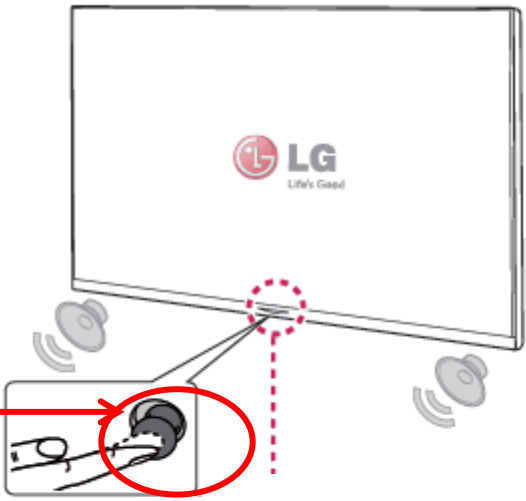
Un-repairable Cases

In this case please exchange the module.

Standard Repair Process Detail Technical Manual

	Error symptom	B. Power error _No power	Established date		
	Content	Check front Power Indicator	Revised date		A9

ST-BY condition: On or Off
 Power ON condition: Turn Off



			Power On (Press) Power Off (Press and hold) ¹
			Volume Control
			Programmes Control

Adjusting the menu

(Depending on model)
 When the TV is turned on, press the button one time. You can adjust the Menu items using the button.

	Turns the power off.
	Accesses the settings menu.
	Clears on-screen displays and returns to TV viewing.
	Changes the input source.
	Scrolls through the saved programmes.
	Adjusts the volume level.

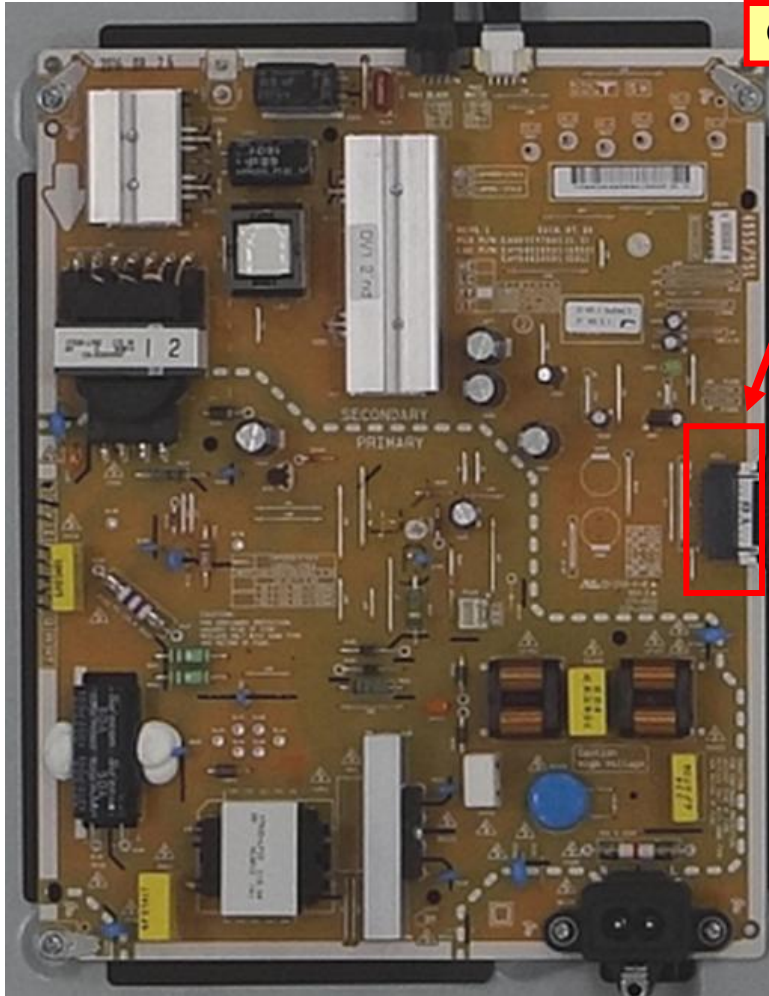
Standard Repair Process Detail Technical Manual

Error symptom	B. Power error _No power	Established date		
Content	Check power input voltage and ST-BY 3.5V	Revised date		A10

<SJ81>

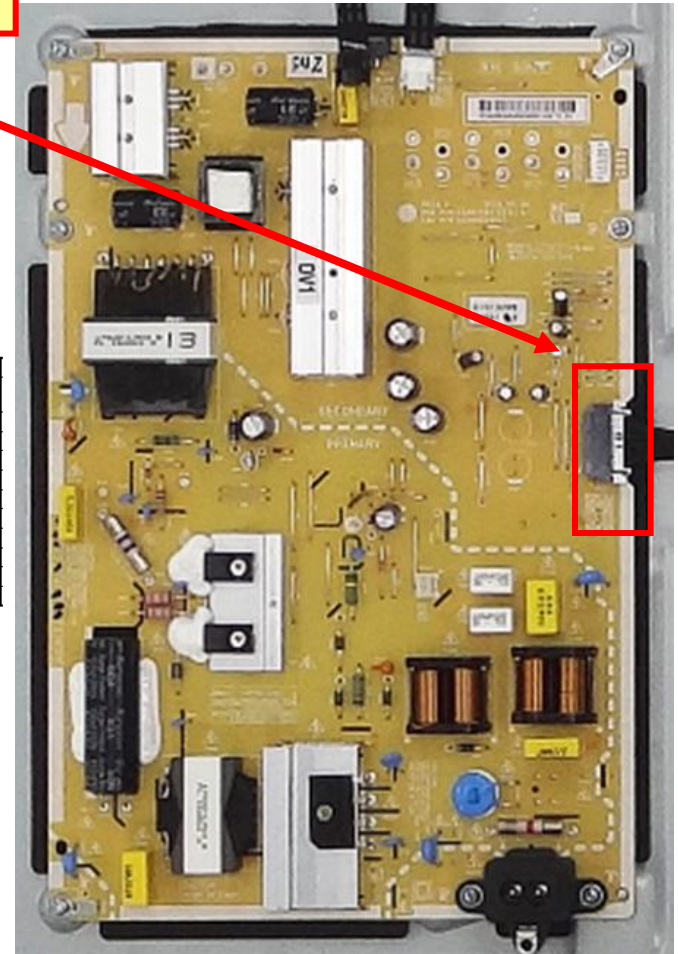
<49",55">

<60",65">



Check the DC 13.2V.

P201			
Type : SMAW200-H1655K			
Maker : YEONHO			
Pin No.	Signal	Pin No.	Signal
1	GND	2	GND
3	PWR_ON	4	P-DIM2
5	GND	6	13.2V
7	13.2V	8	13.2V
9	13.2V	10	13.2V
11	GND	12	GND
13	DRV_ON	14	P-DIM
15	GND	16	SCLK
17	V-SYNC	18	SIN

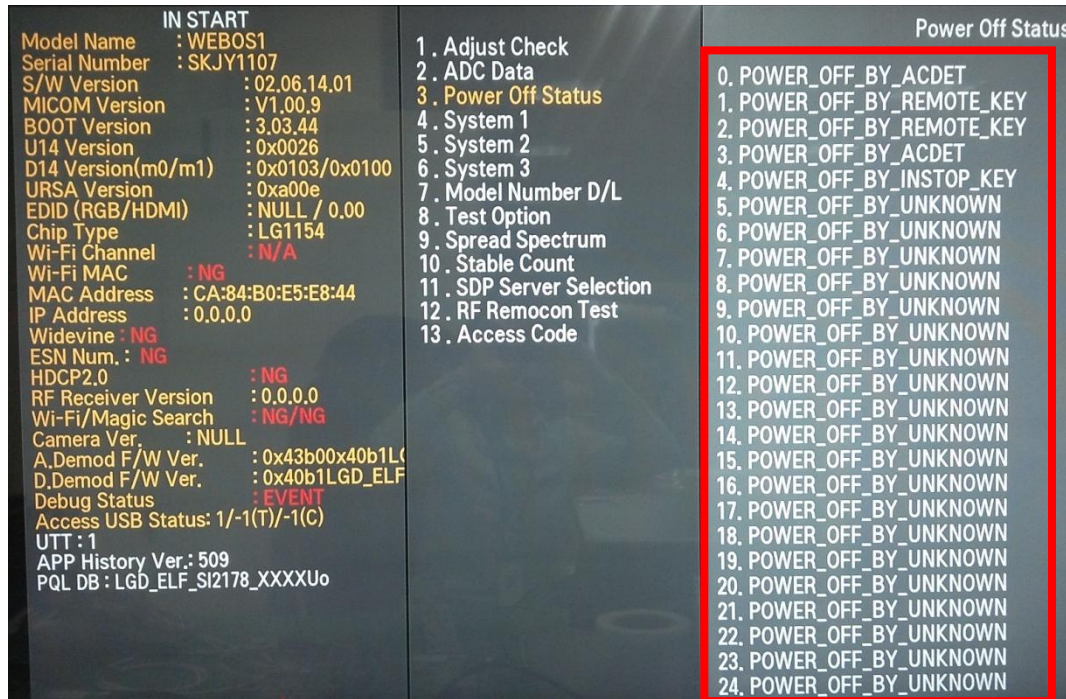


A10

Standard Repair Process Detail Technical Manual

	Error symptom	B. Power error _Off when on, off whiling viewing	Established date		
	Content	POWER OFF MODE checking method	Revised date		A11

<ALL MODELS>



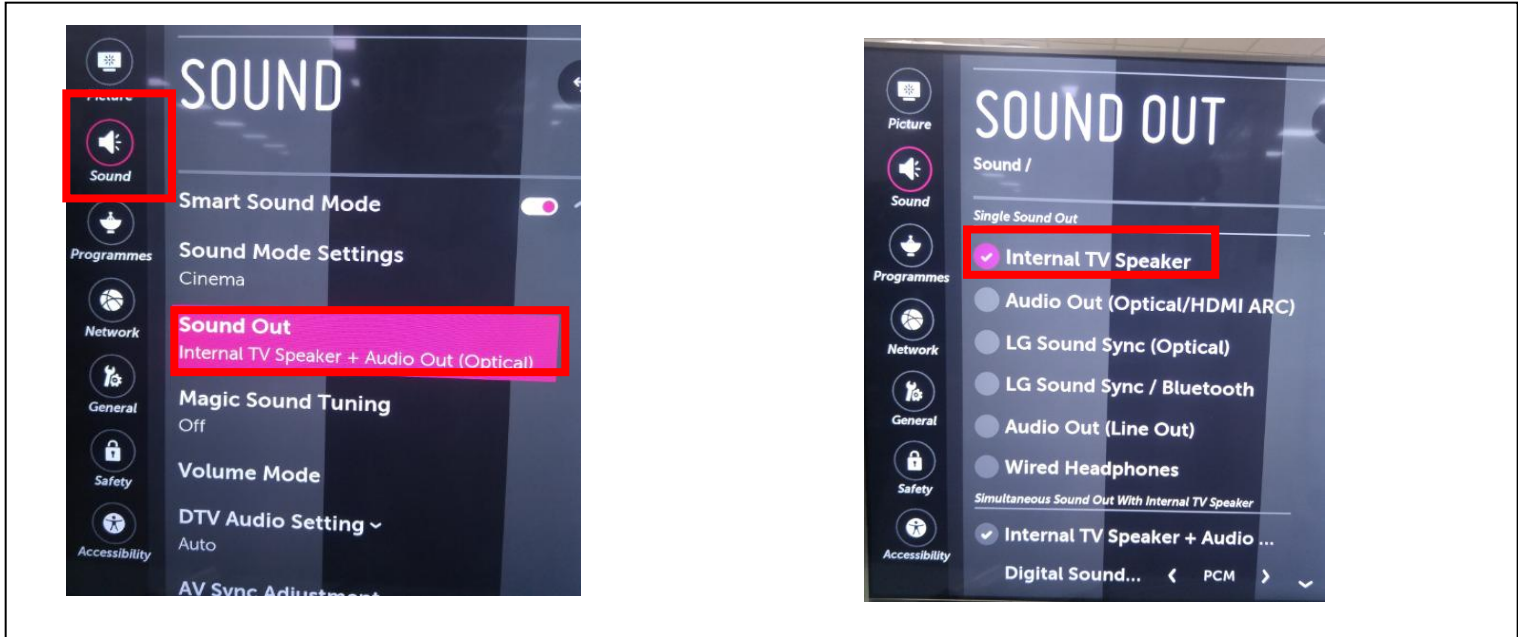
Entry method

1. Press the IN-START button of the remote control for adjustment
2. Check the entry into adjustment item 3

Standard Repair Process Detail Technical Manual

	Error symptom	C. Audio error_No audio/Normal video	Established date		
	Content	Checking method in menu when there is no audio	Revised date		A12

<ALL MODELS>



Checking method

1. Press the Setting button on the remote control
2. Select the Sound function of the Menu
3. Select the Sound Out
4. Select TV Speaker



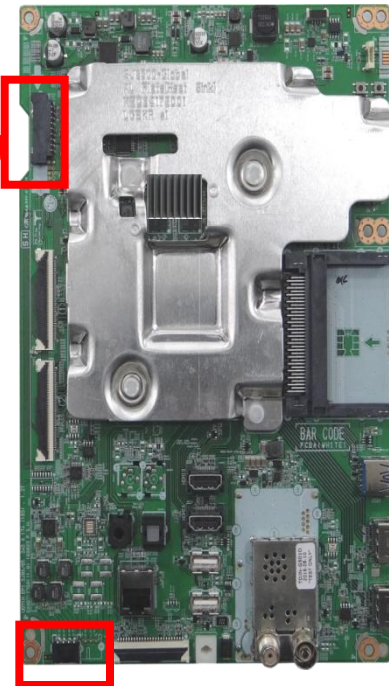
Standard Repair Process Detail Technical Manual

	Error symptom	C. Audio error_No audio/Normal video	Established date		
	Content	Voltage and speaker checking method when there is no audio	Revised date		A13

<SJ81>



P201			
Type : SMAW200-H1855K			
Maker : YEONHO			
Pin No.	Signal	Pin No.	Signal
1	GND	2	GND
3	PWR_ON	4	P-DIM2
5	GND	6	13.2V
7	13.2V	8	13.2V
9	13.2V	10	13.2V
11	GND	12	GND
13	DRV_ON	14	P-DIM
15	GND	16	SCLK
17	V-SYNC	18	SIN



③ 1	SPK_R-FT
2	SPK_R+FT
3	SPK_L-FT
4	SPK_L+FT

Checking order when there is no audio

1. Check the contact condition of or 13.2V connector of Main Board

2. Measure the 13.2V input voltage supplied from Power Board
(If there is no input voltage, remove and check the connector)

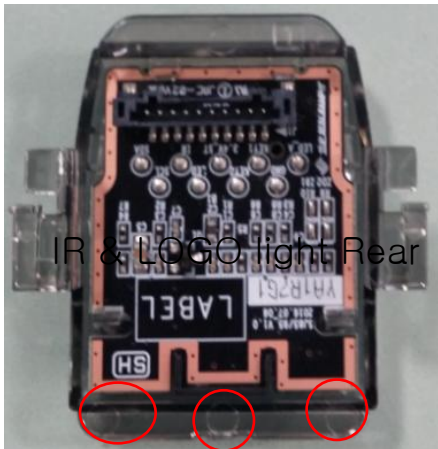
3. Connect the tester RX1 to the speaker terminal and if you hear the Chik Chik sound when you touch the GND and output terminal, the speaker is normal.

Standard Repair Process Detail Technical Manual

	Error symptom	D. Function error	Established date		
	Content	Remote control operation checking method	Revised date		A14

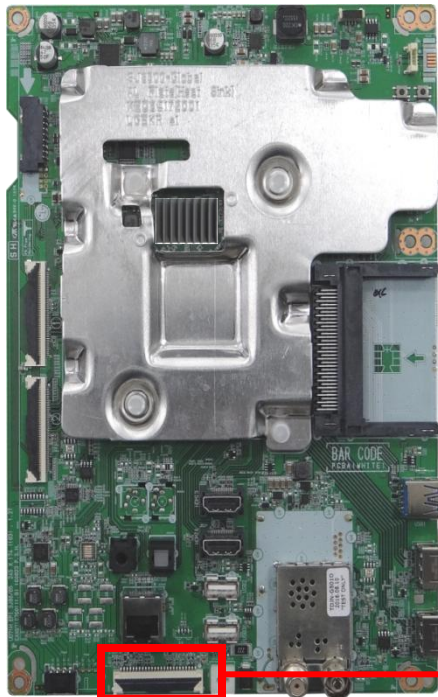
<SJ81>

①
IR & EYE Sensor



IR & LCCG light Rear

IR LED Eye



②

③

Pin	Pin name
1	VCC
2	USB_DM
3	USB_DP
4	GND
5	WOL/WIFL_ON
6	VCC
7	COMBO_RESET
8	GND
9	BT_WAKEUP_DEVICE
10	BT_WAKEUP_HOST
11	GND
12	GND
13	
14	
15	
16	EYE_SDA
17	EYE_SCL
18	GND
19	IR
20	LED_R
21	GND
22	VCC
23	KEY2
24	KEY1
25	GND

Checking order to check remote control

Checking order

1. Check IR cable condition between IR & Main board. (Check picture number ① and ②)
2. Check the standby 3.5V on the terminal 16 pin (③)
3. AS checking the Pre-Amp (IR LED light) , the power is in ON condition, an Analog Tester needle should move slowly, otherwise, it's defective.

Standard Repair Process Detail Technical Manual

	Error symptom	D. Function error	Established date		
	Content	Remote control operation checking method	Revised date		A15

<SJ81>

① Wifi & BT Front



Wifi & BT Rear



②

③

Pin	Pin name
1	VCC
2	USB_DM
3	USB_DP
4	GND
5	WOL/WIFL_ON
6	VCC
7	COMBO_RESET
8	GND
9	BT_WAKEUP_DEVICE
10	BT_WAKEUP_HOST
11	GND
12	GND
13	
14	
15	
16	EYE_SDA
17	EYE_SCL
18	GND
19	IR
20	LED_R
21	GND
22	VCC
23	KEY2
24	KEY1
25	GND

Checking order to check motion remote/wifi

Checking order

1. Check BT/Wifi cable condition between BT/Wifi assy & Main board.
2. Check the 3.5V on the terminal 22



