

# Service Manual

09-Apr-2016

## Product information

### Fast crease removal

- Soleplate: SteamGlide & SteamGlide Plus
- OptimalTEMP Technology
- Continuous steam: Up to 120 g/min
- Power: 2400 – 2600 W
- Pressure: Max 6 – 6.5 bar pump
- Ready to use: 2 min
- Steam boost: Up to 350 – 420 g
- Steam-on-demand
- Variable steam levels
- Vertical steam

### Easy to use

- Water tank: 1.8 L detachable
- Save on all fabrics: Even delicates like silk
- Soleplate gliding performance: 5 stars
- Soleplate scratch resistance: 4 stars
- Detachable water tank
- Hose length: 1.6 m
- Power cord length: 1.8 m
- Carry lock: For transportation and safety
- Cord storage: Velcro fix
- Hose storage: Hose storage compartment
- Precision steam tip
- Ready to use: Light indicator, Sound indicator
- Refill any time during use

## Sustainability

- Energy saving mode

## Scale management

- Suitable for tap water
- Descaling and cleaning: Smart Calc Clean
- Descaling reminder: Light, Sound, Yes

## Safety Information

- This product meets the requirements regarding interference suppression on radio and TV.
- After the product has been repaired, it should function properly and has to meet the safety requirements and legal regulations as officially laid down at this moment.

## Technical information

- Voltage : 220 – 240 V
- Frequency : 50 – 60 Hz
- Power : 2400 – 2600 W
- Dimensions (W x H x L):
  - Product : 37 x 22 x 24.3 cm
  - Packaging : 45.9 x 24.6 x 33.5 cm
- Weight:
  - Iron : 1.22 kg
  - Iron + Base with carry lock modes : 3.2 kg

## Accessories

- Calc clean container

**Product matrix**

**GC8702 - GC8735**



<b>Model Number</b>	<b>GC8702</b>	<b>GC8703</b>	<b>GC8711</b>	<b>GC8712</b>
Power	2600 W	2600 W	2600 W	2600 W
Quiet technology	No	No	No	No
SoftGrip	No	No	No	No
Steam pressure	6 bar	6 bar	6 bar	6 bar
Continuous steam	120 g/min	120 g/min	120 g/min	120 g/min
Steam boost	350 g	350 g	350 g	360 g
Water tank	1800 ml	1800 ml	1800 ml	1800 ml
Detachable Watertank	Yes	Yes	Yes	Yes
Anti - Calc	Smart Calc Clean	Smart Calc Clean	Smart Calc Clean	Smart Calc Clean
Calc Clean reminder	Sound&Light	Sound&Light	Sound&Light	Sound&Light
Soleplate	SteamGlide	SteamGlide	SteamGlide Plus	SteamGlide Plus
Safety auto off	No	No	No	No
Carry Lock	Yes	Yes	Yes	Yes
Energy saving	20 %	20 %	20 %	20 %
Accessories	Container	Container	Container	Container
Power cord material	PVC	PVC	PVC	PVC



<b>Model Number</b>	<b>GC8713</b>	<b>GC8715</b>	<b>GC8721</b>	<b>GC8723</b>
Power	2400 - 2600 W	2600 W	2400 - 2600 W	2600 W
Quiet technology	No	No	No	No
SoftGrip	No	No	Yes	Yes
Steam pressure	6 bar	6 bar	6.2 bar	6.2 bar
Continuous steam	120 g/min	120 g/min	120 g/min	120 g/min
Steam boost	350 g	360 g	380 g	390 g
Water tank	1800 ml	1800 ml	1800 ml	1800 ml
Detachable Watertank	Yes	Yes	Yes	Yes
Anti - Calc	Smart Calc Clean	Smart Calc Clean	Smart Calc Clean	Smart Calc Clean
Calc Clean reminder	Sound&Light	Sound&Light	Sound&Light	Sound&Light
Soleplate	SteamGlide	SteamGlide	SteamGlide Plus	SteamGlide Plus
Safety auto off	No	No	Yes	Yes
Carry Lock	Yes	Yes	Yes	Yes
Energy saving	20 %	20 %	20 %	20 %
Accessories	Container	Container	Container	Container
Power cord material	PVC	PVC	PVC	PVC



<b>Model Number</b>	<b>GC8731</b>	<b>GC8733</b>	<b>GC8735</b>
Power	2600 W	2600 W	2400 - 2600 W
Quiet technology	Yes	Yes	Yes
SoftGrip	Yes	Yes	Yes
Steam pressure	6.5 bar	6.5 bar	6.5 bar
Continuous steam	120 g/min	120 g/min	120 g/min
Steam boost	390 g	410 g	410 g
Water tank	1800 ml	1800 ml	1800 ml
Detachable Watertank	Yes	Yes	Yes
Anti - Calc	Smart Calc Clean	Smart Calc Clean	Smart Calc Clean
Calc Clean reminder	Sound&Light	Sound&Light	Sound&Light
Soleplate	SteamGlide	SteamGlide	SteamGlide Plus
Safety auto off	Yes	Yes	Yes
Carry Lock	Yes	Yes	Yes
Energy saving	20 %	20 %	20 %
Accessories	Container	Container	Container
Power cord material	PVC	PVC	Fabric

INLAY 9
IRON PCBA 6
TRIGGER SPRING CAP & TRIGGER SPRING 22 & 25
LED HOLDER 5
TRIGGER 8
HOUSING 4
RUBBER CAP 24

- Remove **Screw A1**
- Remove **INLAY 9**
- Disconnect **Connectors from PCBA**
- Remove **Screw B1**
- Remove **IRON PCBA 6**
- Remove **Screws C1 - C3**
- Remove **TRIGGER SPRING CAP & TRIGGER SPRING 22 & 25**
- Remove **LED HOLDER 5**
- Remove **TRIGGER 8**
- Remove **Screw D1**
- Remove **HOUSING 4**
- Remove **RUBBER CAP 24**

IRON BOTTOM CAP 23
DOSING HEAD 2
RUBBER CAP_COVER THERMISTOR OPENING 26
RUBBER CAP_COVER FUSE OPENING 27
COVER 3
HOSE CLIP 13
CHASSIS 7
SOLEPLATE MTD ASSY 1

- Remove **IRON BOTTOM CAP 23**
- Remove **Screws E1,E2**
- Remove **DOSING HEAD 2**
- Remove **RUBBER CAP\_COVER THERMISTOR OPENING 26**
- Remove **RUBBER CAP\_COVER FUSE OPENING 27**
- Remove **Screws F1,F2,G1**
- Remove **Plastic washer 501**
- Disconnect **Wires**
- Remove **COVER 3**
- Disconnect **HOSE CLIP 13**
- Remove **Screws H1,H2**
- Remove **Plastic washer 501 (2x)**
- Remove **CHASSIS 7**
- Remove **Grounding Screw K1**
- Remove **SOLEPLATE MTD ASSY 1**
- Remove **Screws L1 - L3**

**WATER TANK ASSY 17**

**STAND TOP ASSY 14A**

**TRAY RUBBER CAP 16 (3x)**

- Remove **WATER TANK ASSY 21**
- Remove **Screws M1 - M8**
- Remove **STAND TOP ASSY 22**
- Remove **Screws N1 - N6**
- Remove **TRAY RUBBER CAP 20 (3x)**
- Remove **Screws P1,P2**
- Remove **Front lock assy**
- Remove **Screws Q1 - Q4**

**CLAMPING PLATE 31**

**MAINSCORD 18**

**CORD CLAMP 33**

**HOSE CORD 28B**

- Remove **Screws R1,R2**
- Remove **CLAMPING PLATE 31**
- Disconnect **Wires**
- Remove **MAINSCORD 18**
- Remove **CORD CLAMP 33**
- Remove **Screws S1,S2**
- Disconnect **Wires and Tube**
- Remove **HOSE CORD 28B**

**PUMP PLATFORM 29**

**PUMP SUPPORT 30 (2x)**

**INLET TUBE 12**

**OUTLET TUBE 11**

**PUMP ASSY 10**

- Remove **Screws T1 - T3**
- Remove **PUMP PLATFORM 29**
- Remove **PUMP SUPPORT 30 (2x)**
- Remove **INLET TUBE 12**
- Remove **OUTLET TUBE 11**
- Remove **PUMP ASSY 10**

**BUTTON FRAME ASSY 19**

**PCBA 20**

- Remove **Screws U1 - U3**
- Remove **BUTTON FRAME ASSY 19**
- Remove **Screw V1**
- Remove **PCBA 20**

Pos	Description	GC8702/30	GC8703/20	GC8711/20
		889870230010	889870320010	889871120010
		WEU	WEU	WEU
		Service code	Service code	Service code
1	Soleplate Mtd Assy	4239 030 00661	4239 030 00661	4239 021 99091
2	Dosing Head	4239 026 53722	4239 026 53722	4239 026 53722
3	Cover	4239 026 58863	4239 026 58863	4239 026 58863
4	Housing Prted	4239 030 01601	4239 030 00541	4239 030 00541
5	Led Holder	4239 026 58922	4239 026 58922	4239 026 58922
6	Iron PCBA	4239 021 83112	4239 021 83112	4239 021 83112
7	Chassis	4239 026 58853	4239 026 58853	4239 026 58853
8	Trigger	4239 026 60191	4239 026 60191	4239 026 60191
9	Inlay Light Strip Assy	4239 030 02251	4239 021 99981	4239 021 99981
10	Pump 6.5Bar 220ml/Min 220-240V 50Hz B	2922 029 98169	2922 029 98169	2922 029 98169
11	Outlet Tube	4239 015 62511	4239 015 62511	4239 015 62511
12	Inlet Tube	4239 015 62501	4239 015 62501	4239 015 62501
13	Hose Clip	4239 010 13341	4239 010 13341	4239 010 13341
14A	Stand Top Assy	4239 030 02261	4239 030 02201	4239 030 00571
15	Front Lock Release Button Spring	4239 014 55001	4239 014 55001	4239 014 55001
16	Tray Rubber Cap	4239 015 59731	4239 015 59731	4239 015 59731
17	Water Tank Prted Assy	4239 030 01651	4239 030 02201	4239 030 00571
18	Mainscord	2422 070 98709	2422 070 98709	2422 070 98709
19	Button Frame Assy	4239 030 00001	4239 030 00001	4239 030 00001
20	PCBA	4239 021 99851	4239 021 99851	4239 021 99851
21A	Calc Clean Container Assy	4239 030 01591	4239 030 01591	4239 030 01591
22	Trigger Spring Cap	4239 026 58961	4239 026 58961	4239 026 58911
23	Iron Bottom Cap	4239 026 58961	4239 026 58961	4239 026 58961
24	Rubber Cap	4239 015 61051	4239 015 61051	4239 015 61051
25	Trigger Spring	4239 014 55011	4239 014 55011	4239 014 55001
26	Rubber Cap_Cover Thermistor Opening	4239 015 61171	4239 015 61171	4239 015 61171
27	Rubber Cap_Cover Fuse Opening	4239 015 61061	4239 015 61061	4239 015 61061
28B	Trimmed Hose Cord	4239 030 02381	4239 021 99961	4239 021 99961
29	Pump Platform	N/A	N/A	N/A
30	Pump Support	4239 015 60351	4239 015 60351	4239 015 60351
31	Clamping Plate	4239 010 00283	4239 010 00283	4239 010 00283
32	Cord Clamp	4239 026 58951	4239 026 58951	4239 026 58951
33	Cord Clamp	4239 026 58951	4239 026 58951	4239 026 58951
34	Stand Bottom Assy	4239 030 01761	4239 030 01771	4239 030 01771

Non Spare Part	Description
501	Plastic Washer

Pos	Description	GC8712/20	GC8713/20	GC8715/20
		889871220010	889871320010	889871520010
		WEU	WEU	WEU
		Service code	Service code	Service code
1	Soleplate Mtd Assy	4239 021 99091	4239 021 99091	4239 021 99091
2	Dosing Head	4239 026 53722	4239 026 53722	4239 026 53722
3	Cover	4239 026 58863	4239 026 58863	4239 026 58863
4	Housing Prted	4239 030 00541	4239 030 01811	4239 030 01811
5	Led Holder	4239 026 58922	4239 026 58922	4239 026 58922
6	Iron PCBA	4239 021 83112	4239 021 83112	4239 021 83112
7	Chassis	4239 026 58853	4239 026 58853	4239 026 58853
8	Trigger	4239 026 60191	4239 026 60191	4239 026 60191
9	Inlay Light Strip Assy	4239 021 99981	4239 030 02221	4239 030 02221
10	Pump 6.5Bar 220ml/Min 220-240V 50Hz B	2922 029 98169	2922 029 98169	2922 029 98169
11	Outlet Tube	4239 015 62511	4239 015 62511	4239 015 62511
12	Inlet Tube	4239 015 62501	4239 015 62501	4239 015 62501
13	Hose Clip	4239 010 13341	4239 010 13341	4239 010 13341
14A	Stand Top Assy	4239 030 02171	4239 030 02271	4239 030 02231
15	Front Lock Release Button Spring	4239 014 55001	4239 014 55001	4239 014 55001
16	Tray Rubber Cap	4239 015 59731	4239 015 59731	4239 015 59731
17	Water Tank Prted Assy	4239 030 00601	4239 030 01881	4239 030 01881
18	Mainscord	2422 070 98709	2422 070 98709	2422 070 98709
19	Button Frame Assy	4239 030 00001	4239 030 00001	4239 030 00001
20	PCBA	4239 021 99851	4239 021 99851	4239 021 99851
21A	Calc Clean Container Assy	4239 030 01591	4239 030 01591	4239 030 01591
22	Trigger Spring Cap	4239 026 58961	4239 026 58961	4239 026 58961
23	Iron Bottom Cap	4239 026 58961	4239 026 58961	4239 026 58961
24	Rubber Cap	4239 015 61051	4239 015 61051	4239 015 61051
25	Trigger Spring	4239 014 55011	4239 014 55011	4239 014 55011
26	Rubber Cap_Cover Thermistor Opening	4239 015 61171	4239 015 61171	4239 015 61171
27	Rubber Cap_Cover Fuse Opening	4239 015 61061	4239 015 61061	4239 015 61061
28B	Trimmed Hose Cord	4239 021 99961	4239 021 99811	4239 021 99811
29	Pump Platform	N/A	N/A	N/A
30	Pump Support	4239 015 60351	4239 015 60351	4239 015 60351
31	Clamping Plate	4239 010 00283	4239 010 00283	4239 010 00283
32	Cord Clamp	4239 026 58951	4239 026 58951	4239 026 58951
33	Cord Clamp	4239 026 58951	4239 026 58951	4239 026 58951
34	Stand Bottom Assy	4239 030 01771	4239 030 01821	4239 030 01821

Non Spare Part	Description
501	Plastic Washer

Pos	Description	GC8715/20 889871520150 UK Service code	GC8721/30 889872130010 WEU Service code	GC8721/31 889872131160 Switzerland Service code
1	Soleplate Mtd Assy	4239 021 99091	4239 021 99091	4239 021 83452
2	Dosing Head	4239 026 53722	4239 026 53722	4239 026 53722
3	Cover	4239 026 58863	4239 026 58863	4239 026 58863
4	Housing Prted	4239 030 01811	4239 030 01601	4239 030 01601
5	Led Holder	4239 026 58922	4239 026 58922	4239 026 58922
6	Iron PCBA	4239 021 83112	4239 021 83112	4239 021 83112
7	Chassis	4239 026 58853	4239 026 58853	4239 026 58853
8	Trigger	4239 026 60191	4239 026 60191	4239 026 68301
9	Inlay Light Strip Assy	4239 030 02221	4239 026 68421	4239 026 68421
10	Pump 6.5Bar 220ml/Min 220-240V 50Hz B	2922 029 98169	2922 029 98169	2922 029 98169
11	Outlet Tube	4239 015 62511	4239 015 62511	4239 015 62511
12	Inlet Tube	4239 015 62501	4239 015 62501	4239 015 62501
13	Hose Clip	4239 010 13341	4239 010 13341	4239 010 13341
14A	Stand Top Assy	4239 030 02231	4239 030 01631	4239 030 01631
15	Front Lock Release Button Spring	4239 014 55001	4239 014 55001	4239 014 55001
16	Tray Rubber Cap	4239 015 59731	4239 015 59731	4239 015 59731
17	Water Tank Prted Assy	4239 030 01881	4239 030 01651	4239 030 01651
18	Mainscord	2422 070 98726	2422 070 98709	2422 070 98708
19	Button Frame Assy	4239 030 00001	4239 030 00001	4239 030 00001
20	PCBA	4239 021 99851	4239 021 99851	4239 021 99851
21A	Calc Clean Container Assy	4239 030 01591	4239 030 01591	4239 030 01591
22	Trigger Spring Cap	4239 026 58961	4239 026 58961	4239 026 58911
23	Iron Bottom Cap	4239 026 58961	4239 026 58961	4239 026 58961
24	Rubber Cap	4239 015 61051	4239 015 61051	4239 015 61051
25	Trigger Spring	4239 014 55011	4239 014 55011	4239 014 55001
26	Rubber Cap_Cover Thermistor Opening	4239 015 61171	4239 015 61171	4239 015 61171
27	Rubber Cap_Cover Fuse Opening	4239 015 61061	4239 015 61061	4239 015 61061
28B	Trimmed Hose Cord	4239 021 99811	4239 030 02411	4239 030 01611
29	Pump Platform	N/A	N/A	N/A
30	Pump Support	4239 015 60351	4239 015 60351	4239 015 60351
31	Clamping Plate	4239 010 00283	4239 010 00283	4239 010 00283
32	Cord Clamp	4239 026 58951	4239 026 58951	4239 026 58951
33	Cord Clamp	4239 026 58951	4239 026 58951	4239 026 58951
34	Stand Bottom Assy	4239 030 01821	4239 030 01761	4239 030 01761

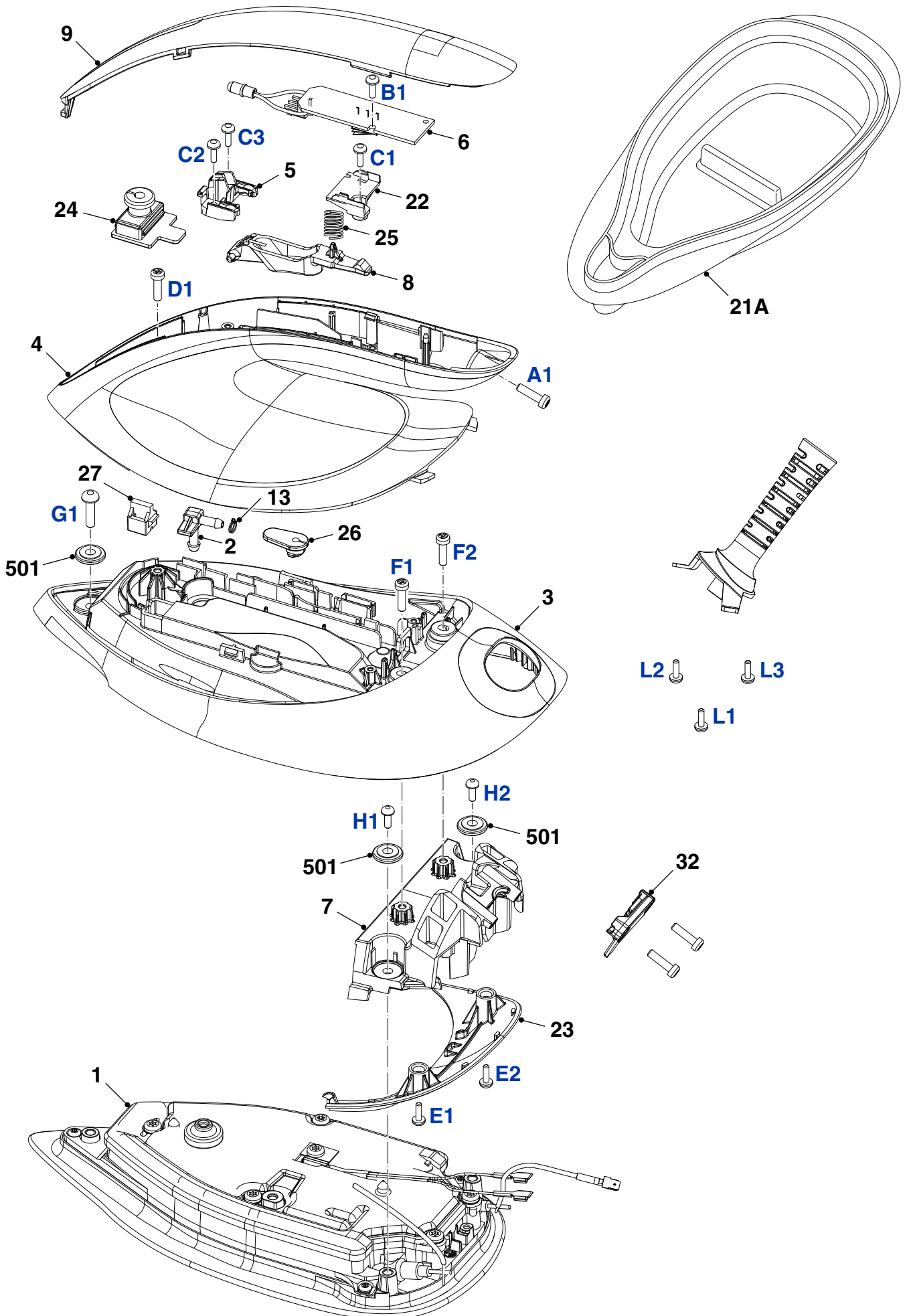
Non Spare Part	Description
501	Plastic Washer

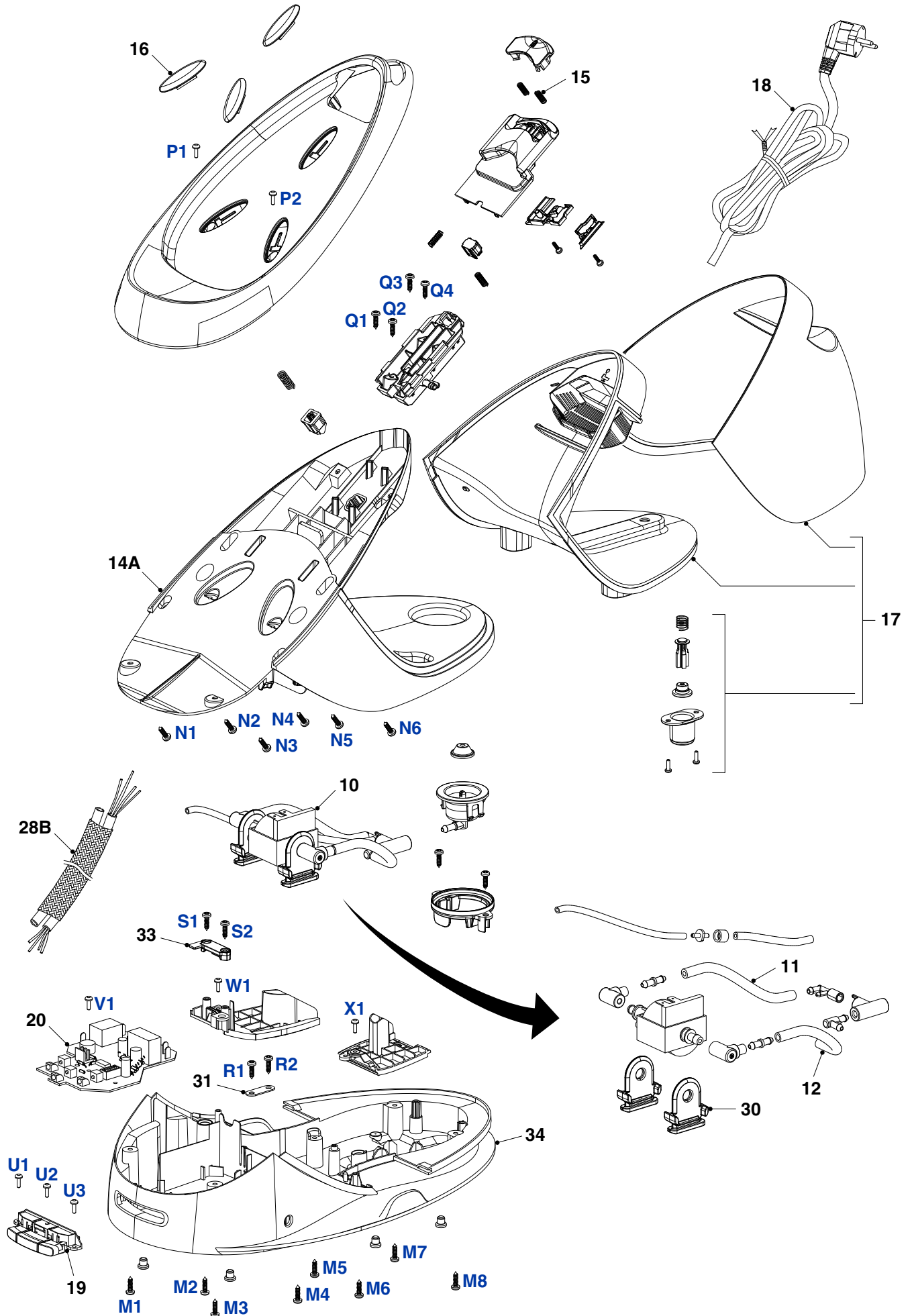
Pos	Description	GC8723/20	GC8731/20	GC8733/20
		889872320010	889873120010	889873320010
		WEU	WEU	WEU
		Service code	Service code	Service code
1	Soleplate Mtd Assy	4239 021 99091	4239 021 99091	4239 021 99091
2	Dosing Head	4239 026 53722	4239 026 53722	4239 026 53722
3	Cover	4239 026 58863	4239 026 67491	4239 026 67491
4	Housing Prted	4239 026 68481	4239 030 00541	4239 030 00541
5	Led Holder	4239 026 58922	4239 026 58922	4239 026 58922
6	Iron PCBA	4239 021 83112	4239 021 83112	4239 021 83112
7	Chassis	4239 026 58853	4239 026 67661	4239 026 67661
8	Trigger	4239 026 58901	4239 026 67501	4239 026 67501
9	Inlay Light Strip Assy	4239 026 68411	4239 026 68781	4239 026 68781
10	Pump 6.5Bar 220ml/Min 220-240V 50Hz B	2922 029 98169	2922 029 98169	2922 029 98169
11	Outlet Tube	4239 015 62511	4239 015 62511	4239 015 62511
12	Inlet Tube	4239 015 62501	4239 015 62501	4239 015 62501
13	Hose Clip	4239 010 13341	4239 010 13341	4239 010 13341
14A	Stand Top Assy	4239 030 01861	4239 030 02391	4239 030 02331
15	Front Lock Release Button Spring	4239 014 55001	4239 014 55001	4239 014 55001
16	Tray Rubber Cap	4239 015 59731	4239 015 59731	4239 015 59731
17	Water Tank Prted Assy	4239 030 01881	4239 030 00601	4239 030 00601
18	Mainscord	2422 070 98709	2422 070 98709	2422 070 98709
19	Button Frame Assy	4239 030 00001	4239 021 99871	4239 021 99871
20	PCBA	4239 021 99851	4239 021 99851	4239 021 99851
21A	Calc Clean Container Assy	4239 030 01591	4239 030 01591	4239 030 01591
22	Trigger Spring Cap	4239 026 58911	4239 026 58911	4239 026 58911
23	Iron Bottom Cap	4239 026 58961	4239 026 67671	4239 026 67671
24	Rubber Cap	4239 015 61051	4239 015 61051	4239 015 61051
25	Trigger Spring	4239 014 55001	4239 014 55001	4239 014 55001
26	Rubber Cap_Cover Thermistor Opening	4239 015 61171	4239 015 61171	4239 015 61171
27	Rubber Cap_Cover Fuse Opening	4239 015 61061	4239 015 61061	4239 015 61061
28B	Trimmed Hose Cord	4239 021 99811	4239 021 99961	4239 021 99961
29	Pump Platform	N/A	4239 026 67261	4239 026 67261
30	Pump Support	4239 015 60351	4239 015 60351	4239 015 60351
31	Clamping Plate	4239 010 00283	4239 010 00283	4239 010 00283
32	Cord Clamp	4239 026 58951	4239 026 58951	4239 026 58951
33	Cord Clamp	4239 026 58951	4239 026 58951	4239 026 58951
34	Stand Bottom Assy	4239 030 01821	4239 030 02291	4239 030 02291

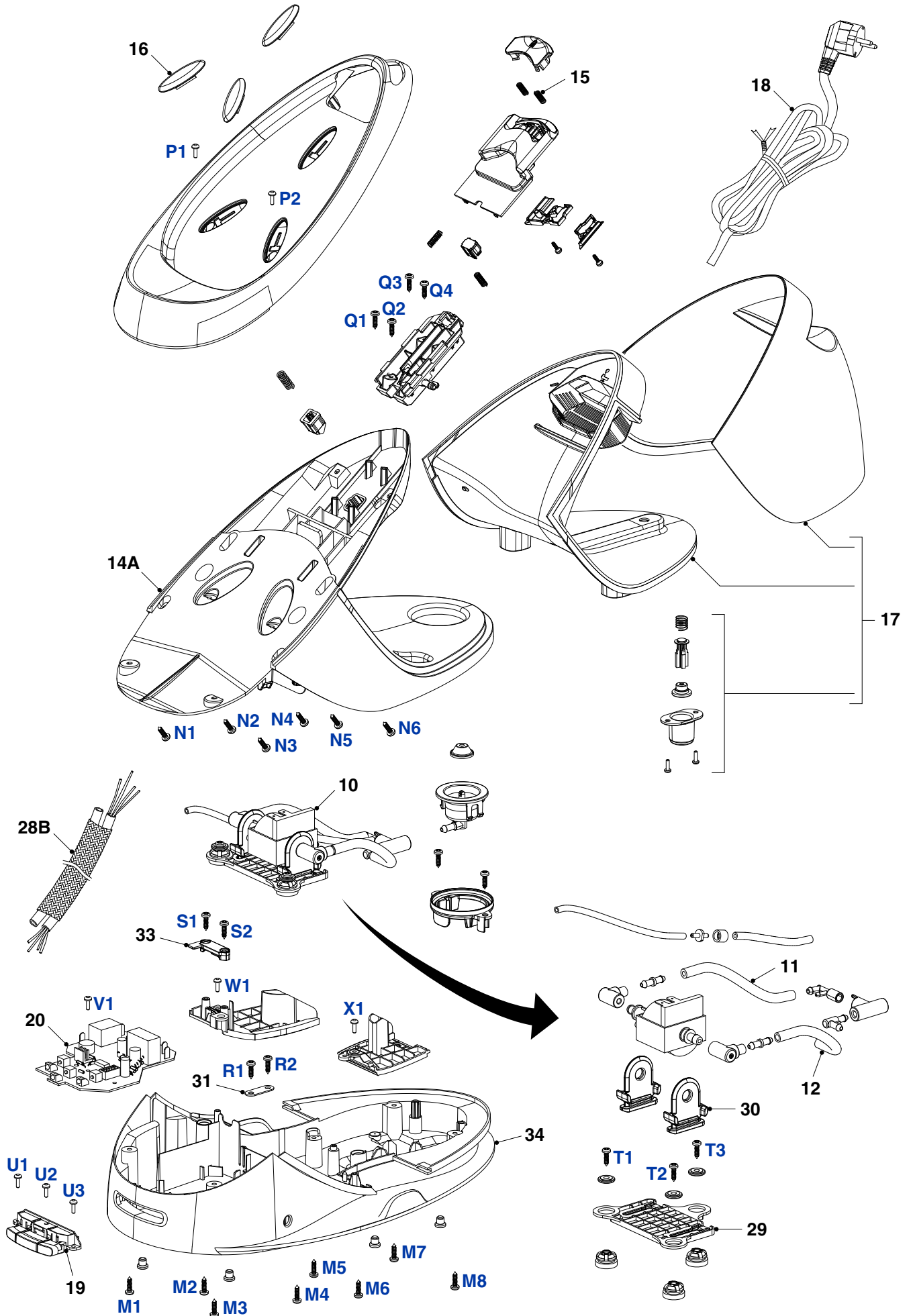
Non Spare Part	Description
501	Plastic Washer

Pos	Description	GC8735/80	GC8735/80
		889873580010	889873580180
		WEU	Iberia
		Service code	Service code
1	Soleplate Mtd Assy	4239 021 99091	4239 021 99091
2	Dosing Head	4239 026 53722	4239 026 53722
3	Cover	4239 026 67491	4239 026 67491
4	Housing Prted	4239 021 99801	4239 021 99801
5	Led Holder	4239 026 58922	4239 026 58922
6	Iron PCBA	4239 021 83112	4239 021 83112
7	Chassis	4239 026 67661	4239 026 67661
8	Trigger	4239 026 67501	4239 026 67501
9	Inlay Light Strip Assy	4239 026 68411	4239 026 68411
10	Pump 6.5Bar 220ml/Min 220-240V 50Hz B	2922 029 98169	2922 029 98169
11	Outlet Tube	4239 015 62511	4239 015 62511
12	Inlet Tube	4239 015 62501	4239 015 62501
13	Hose Clip	4239 010 13341	4239 010 13341
14A	Stand Top Assy	4239 021 99911	4239 021 99911
15	Front Lock Release Button Spring	4239 014 55001	4239 014 55001
16	Tray Rubber Cap	4239 015 59731	4239 015 59731
17	Water Tank Prted Assy	4239 030 01881	4239 030 01881
18	Mainscord	2422 070 98707	2422 070 98707
19	Button Frame Assy	4239 021 99871	4239 021 99871
20	PCBA	4239 021 99851	4239 021 99851
21A	Calc Clean Container Assy	4239 030 01591	4239 030 01591
22	Trigger Spring Cap	4239 026 58911	4239 026 58911
23	Iron Bottom Cap	4239 026 67671	4239 026 67671
24	Rubber Cap	4239 015 61051	4239 015 61051
25	Trigger Spring	4239 014 55001	4239 014 55001
26	Rubber Cap_Cover Thermistor Opening	4239 015 61171	4239 015 61171
27	Rubber Cap_Cover Fuse Opening	4239 015 61061	4239 015 61061
28B	Trimmed Hose Cord	4239 021 99811	4239 021 99811
29	Pump Platform	4239 026 67261	4239 026 67261
30	Pump Support	4239 015 60351	4239 015 60351
31	Clamping Plate	4239 010 00283	4239 010 00283
32	Cord Clamp	4239 026 58951	4239 026 58951
33	Cord Clamp	4239 026 58951	4239 026 58951
34	Stand Bottom Assy	4239 030 01751	4239 030 01751

Non Spare Part	Description
501	Plastic Washer

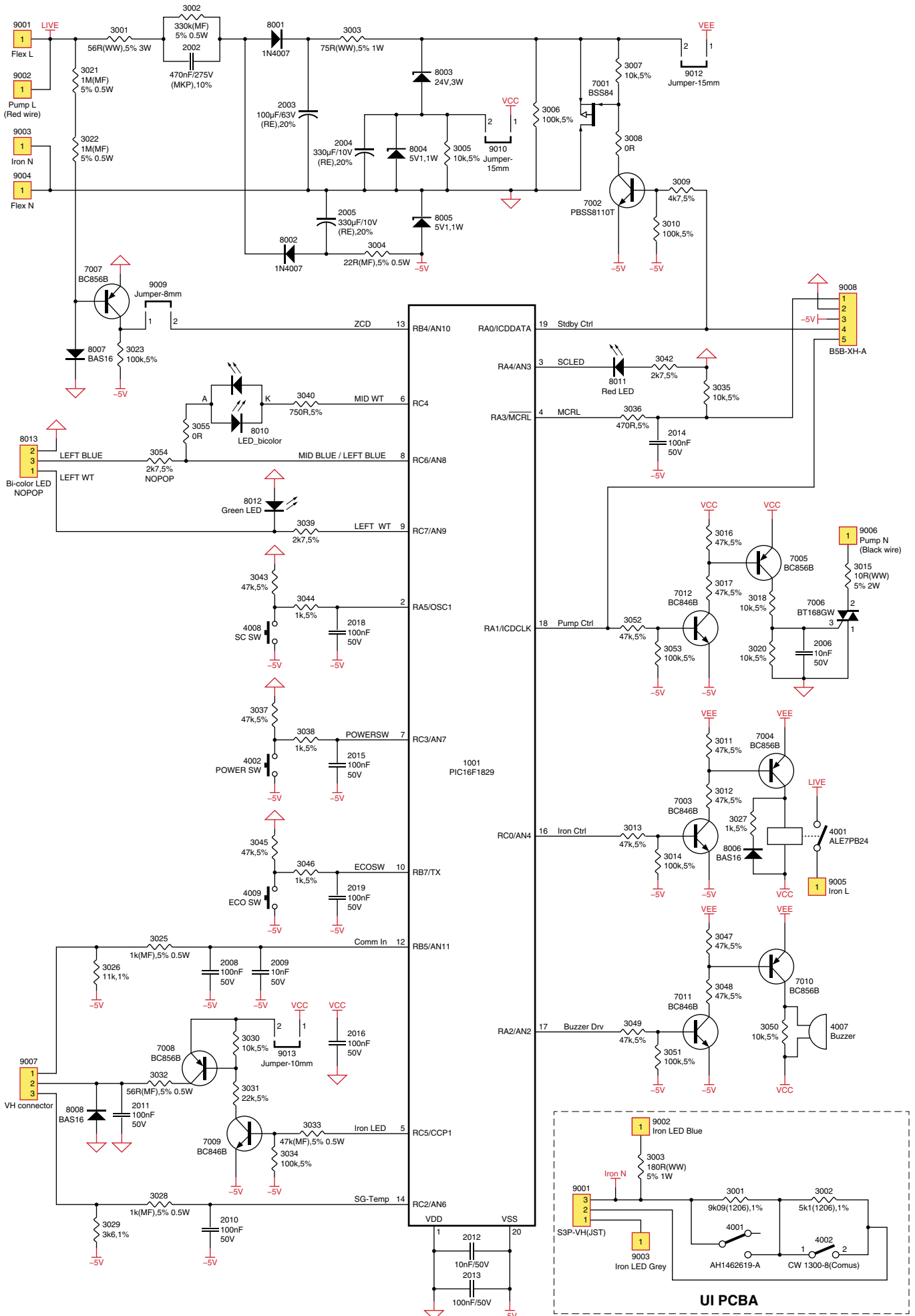


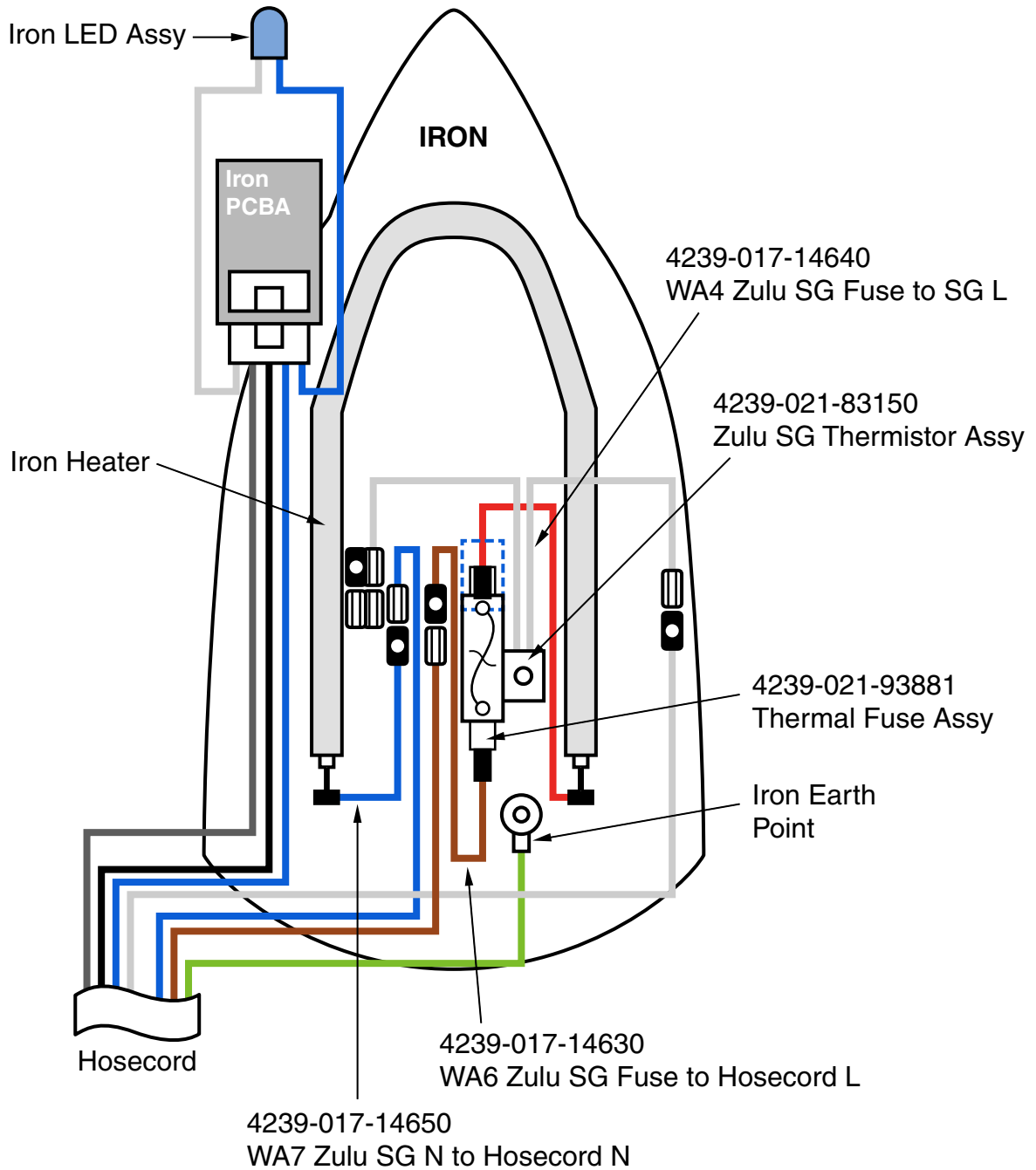


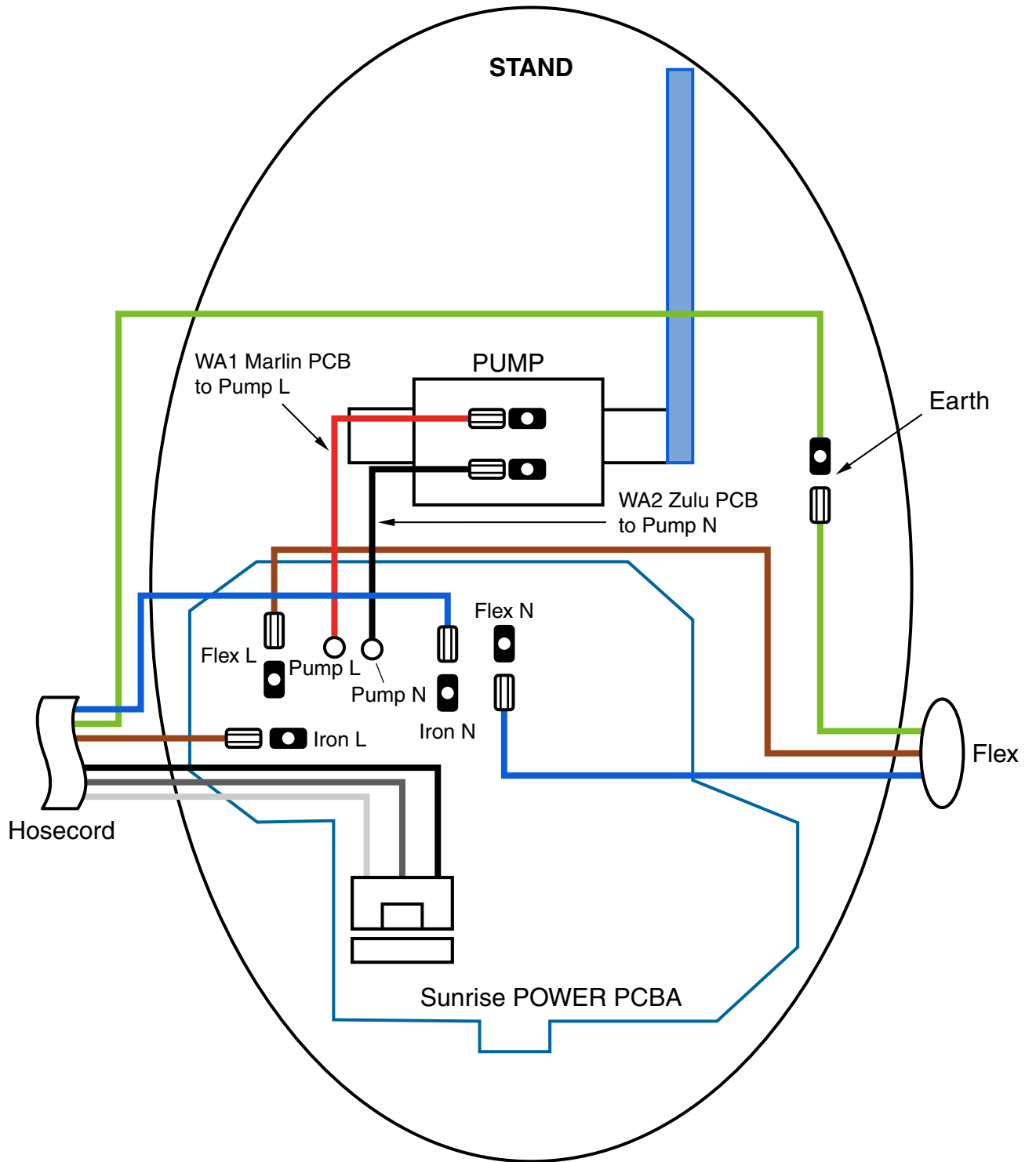


# Electrical Diagram

# GC8702 - GC8735







- Due to the high wattage of the iron, only the specified cord set must be used.
- Should damage be observed on the **MAINSCORD 18**, it must be replaced. Continued usage is not allowed.
- If **STAND BOTTOM ASSY 34** is provided without type plate information eg. Type number, voltage etc. When replacing the Stand Bottom Assy, engrave the type number & voltage on the type plate with a sharp object.
- After the product has been repaired, it should function properly and has to meet the safety requirements & legal regulation as laid down & officially established at this moment.
- The following tests are common checks that are conducted on a repaired product before it is returned to the consumer.

**1. Soleplate temperature**

Check the soleplate temperature is within IEC requirement.

Soleplate temperature (Deg C)		Materials, for example	
Minimum	Maximum		
101	145	All fabric types	

**2. Leakage current**

Check that leakage current is within IEC requirement.

Measure leakage current between LIVE/NEUTRAL & EARTH.

IEC requirement is that at 230 V supply, the EARTH leakage current must be less than 0.75 mA.

**3. Water leakage / Functionality**

Check that there is no water leakage from any part of product during operation.

Check that the functionality of the product (product dependent) eg. Steaming, steam trigger, variable steam, SOS, PCBA etc is working properly.

**4. Loose part**

Check that there are no loose parts eg. Extra screws in the product that can cause short-circuit or product malfunctions.

**5. Fuse open circuit**

When replacing fuse, to also service the water tubes which is probably choked with calc.

**6. PCBAs ESD control**

All failed PCBAs including to be packed with ESD bags for shipment.

**7. Screws**

Screws should be the defined screws in terms of length and material used.

**8. Self-Check mode**

**8.1. Introduction of Self-Check mode**

Self-Check mode is facilitated by a built-in diagnosis program, which tests and activates all hardware inputs and outputs sequentially, with the aid of testing personnel's interaction and observation.

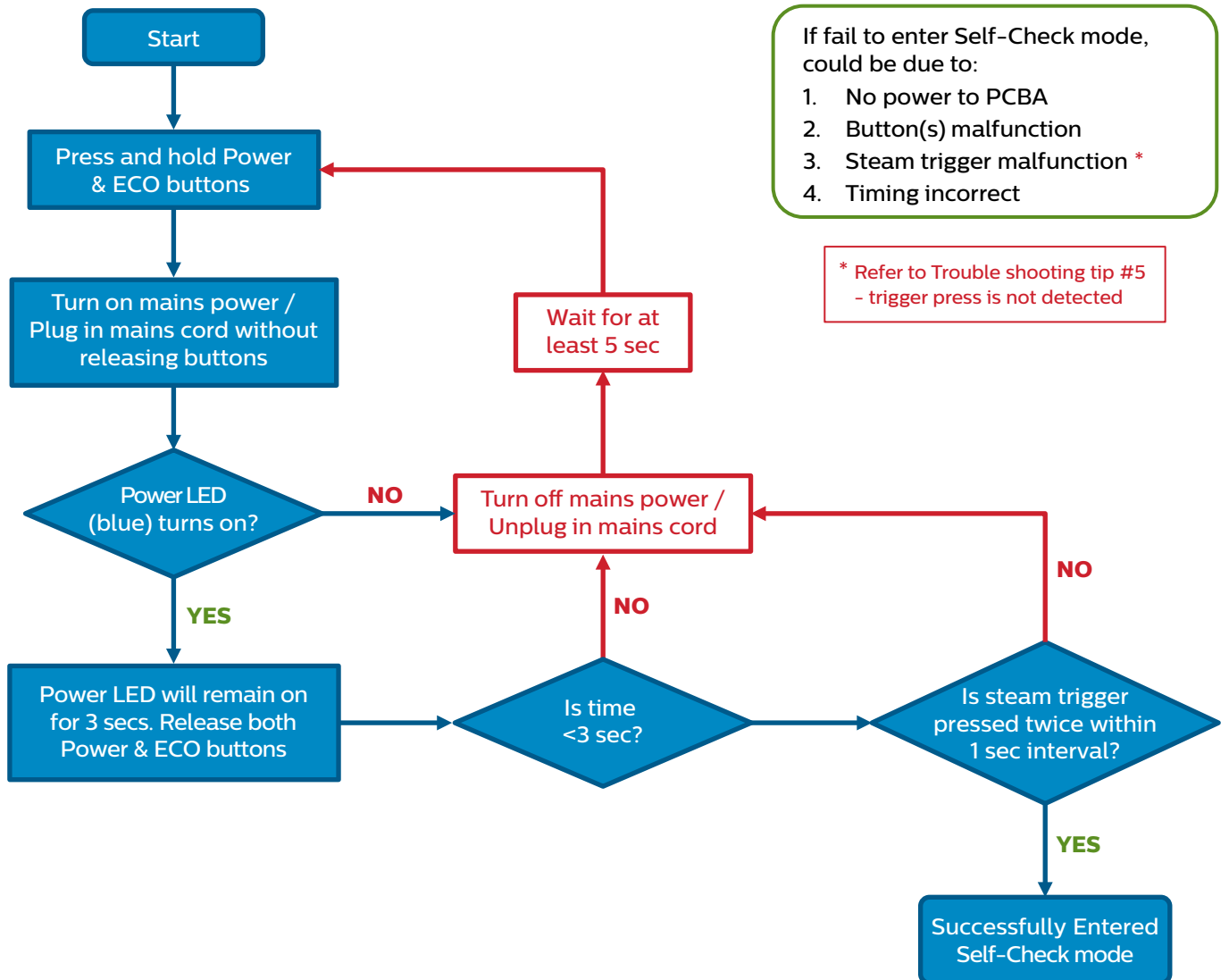
Self-Check mode is **NOT** an exhaustive diagnosis, but a quick preliminary check on all the hardware function.

Further test and troubleshooting may still be required to identify the root cause.

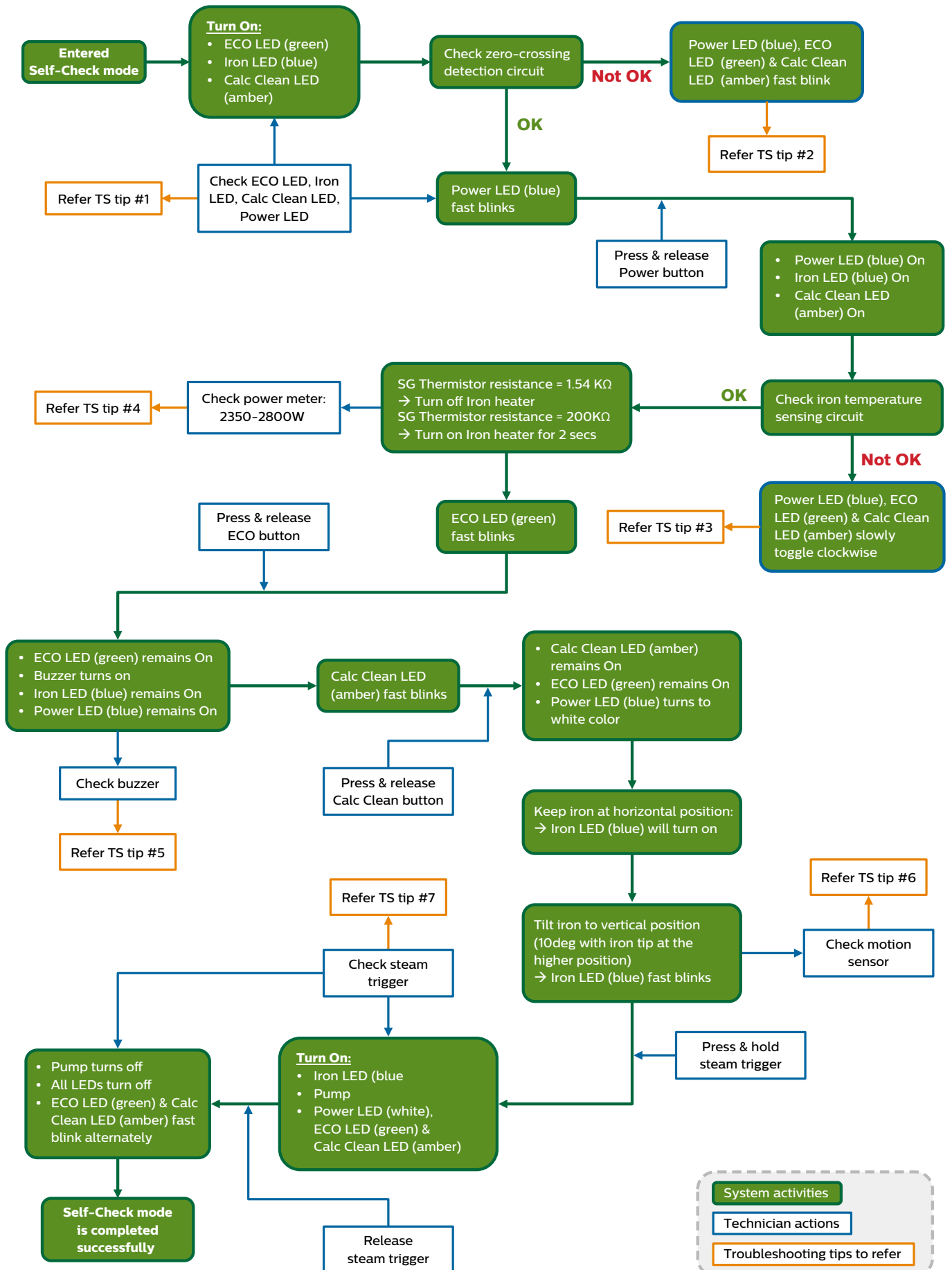
**8.2. Before start Self-Check mode, please do the following checking**

1. Power meter in place to monitor system power
2. Minimum level of water in the water tank
3. Make sure Soleplate is cold (<100 °C)

8.3. Enter Self-Check mode Process Flow Chart



8.4. Perform Self-Check mode Process Flow Chart



## 8.5. Troubleshooting Tips

1. Iron LED does not light up as specified, fault could be on:

TS tip #1

- a) Iron LED and hose cord wiring → [disconnect connector 9010 from Power PCBA and measure across 9010 female side blue wire and iron Neutral to check diode characteristics](#)
- b) Power PCBA → [check by testing another board](#)

2. Other LEDs do not light up as specified, fault should be on **PCBA**

1. Zero-crossing detection circuit error, fault should be on **PCBA**

TS tip #2

1. Iron temperature sensing circuit error, fault could be on:

TS tip #3

- a) Thermistor → [check the resistance, should be around 200+ kΩ](#)
- b) Power PCBA → [check by testing another board](#)
- c) Connection → [check wire continuity, especially hose cord](#)

1. Iron heater power does not show in the power meter, fault could be due to:

TS tip #4

- a) Iron is too hot → [cool down and try again](#)
- b) Iron Fuse or Heating element Open Circuit → [check by measuring resistance between Iron Live and Iron Neutral signal](#)
- c) Power PCBA → [check by testing another board](#)

1. No buzzer sound, fault could be on:

TS tip #5

- a) Power PCBA → [check by testing another board](#)

1. Motion sensor not functioning correctly → [check Iron PCBA assembly, fault should be on PCBA](#)

TS tip #6

1. No steam when steam trigger is pressed:

TS tip #7

- If iron LED still keeps blinking, trigger press is not detected, fault could be on:
  - a) Trigger mechanism or hose cord connection → [check steam trigger related parts and PCBA circuit](#)
  - b) Power PCBA → [check by testing another board](#)
- If trigger is working properly check pump and related parts in PCBA circuit

**History record**

**GC8702 - GC8735**

Version 1: Created on April 2016 All in One.