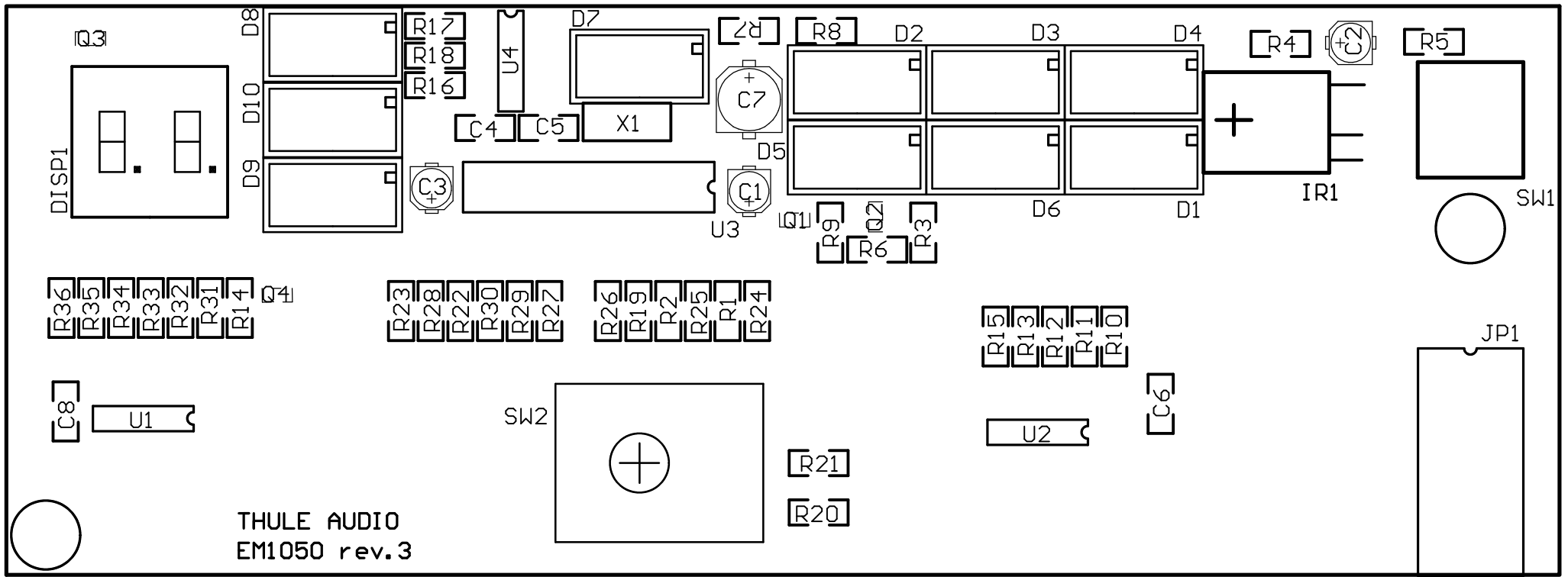
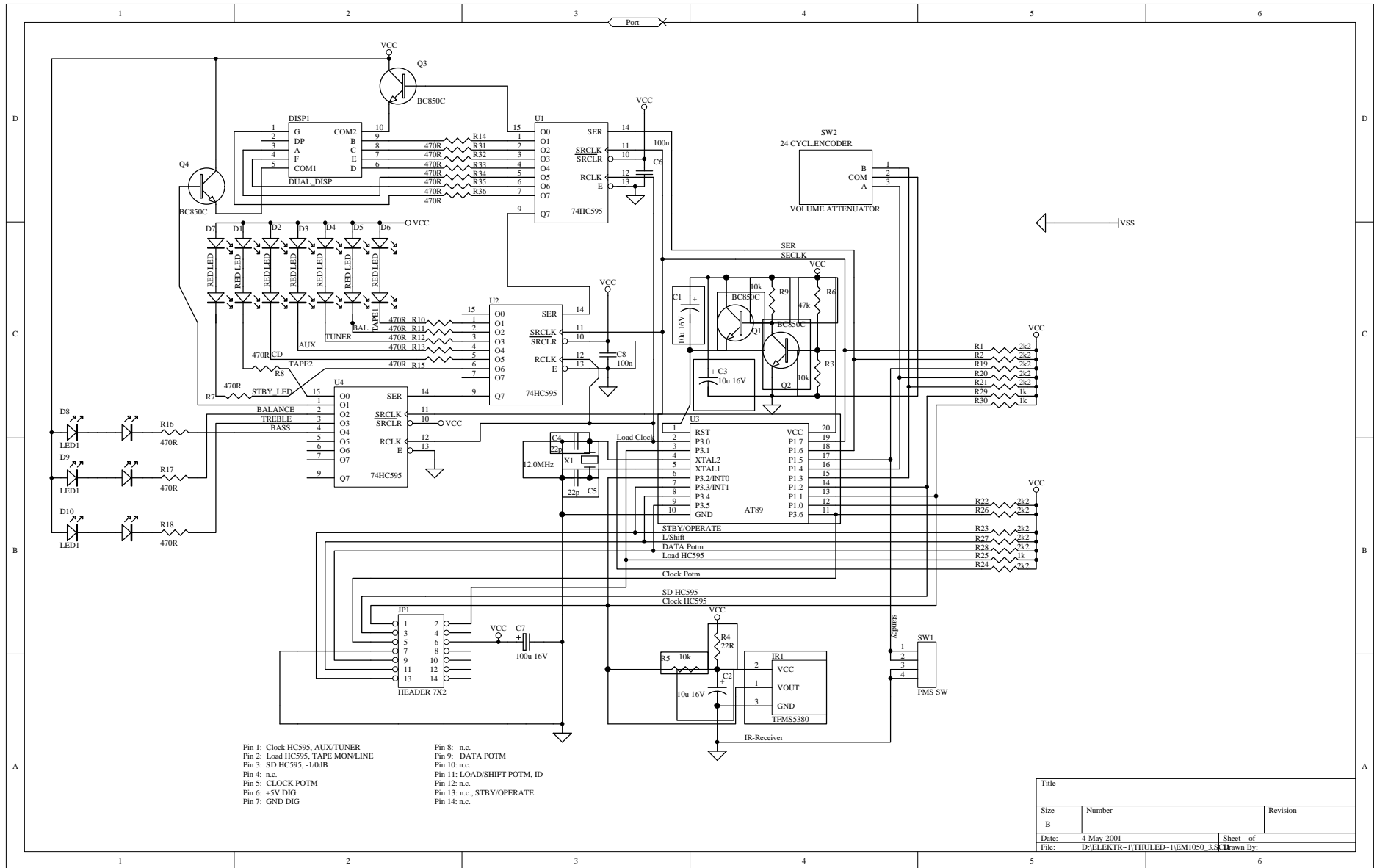


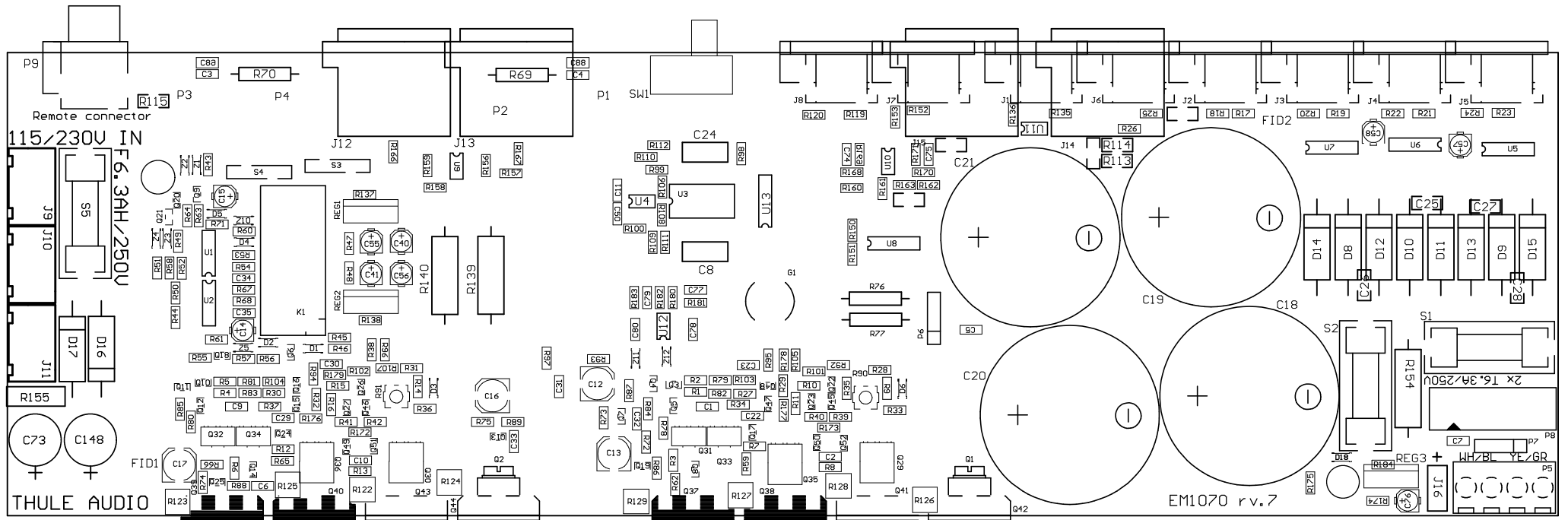
service manual for Thule Audio

IA60





Title		
Size	Number	Revision
B		
Date:	4-May-2001	Sheet of
File:	D:\ELEKTR-1\THULED-1\EM1050_3.Sch Drawn By:	



115/230V IN

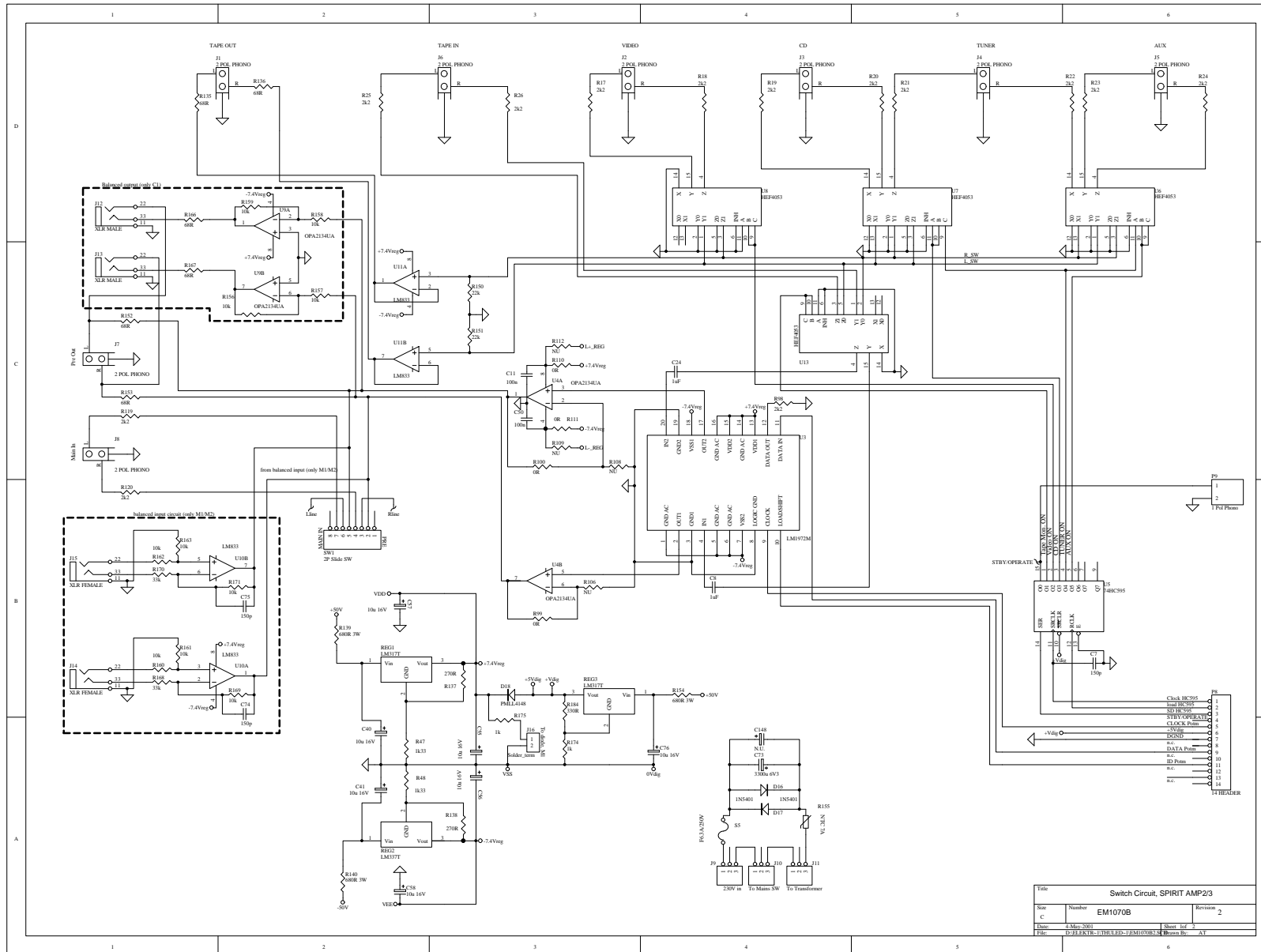
F6.3AH/250V

THULE AUDIO

EM1070 rv.7

2x 16.3A/250V

REG3 + WHZBL YE/GR



Title			Switch Circuit, SPIRIT AMP2/3	
Rev	Number	EM1070B	Revision	2
Date	4-May-2001		Sheet	1 of 1
File	D:\JFKRIB-1\THU-LEC-EM1070B.d	Drawn By	AT	

