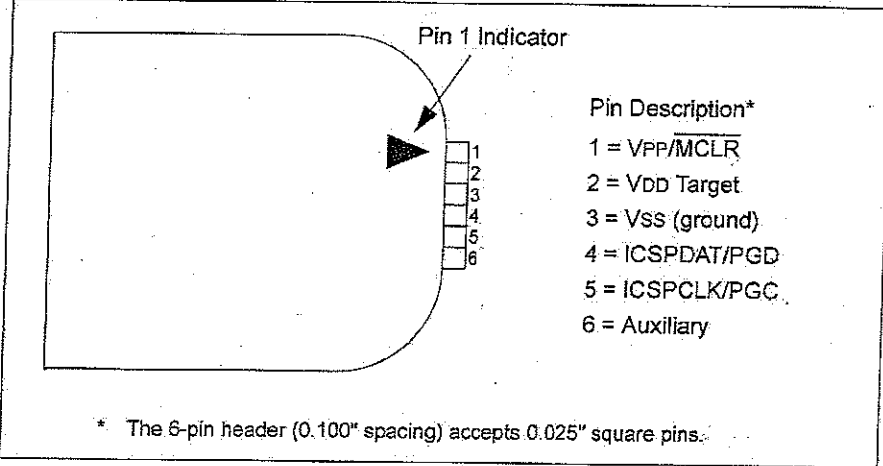


PICKit 2 Programmer/Debugger Overview

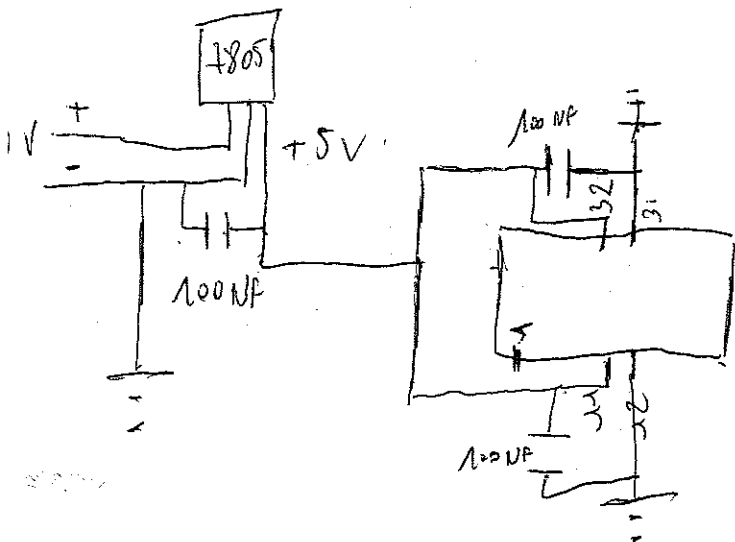
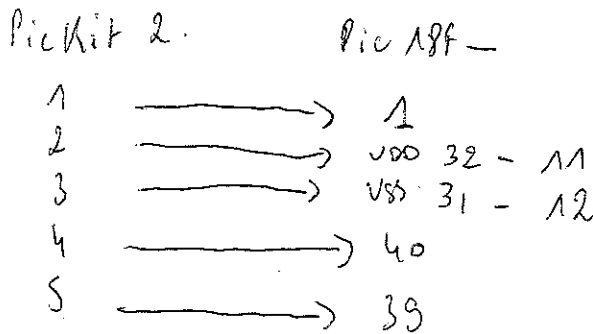
FIGURE 1-2: PICKit™ 2 PROGRAMMER CONNECTOR PINOUT



Note: The programming connector pin functions are different for programming Serial EEPROMs and HCS devices. See the ReadMe file ([Help>Readme](#)) included with the PICKit 2 programming software for these pinouts.

1.3.5 Lanyard Connection

To help prevent possible loss of the PICKit 2, a convenient lanyard connection is available on the programmer.



Le pin 1 du pic est connecté au 5V avec une résistance 1kΩ.