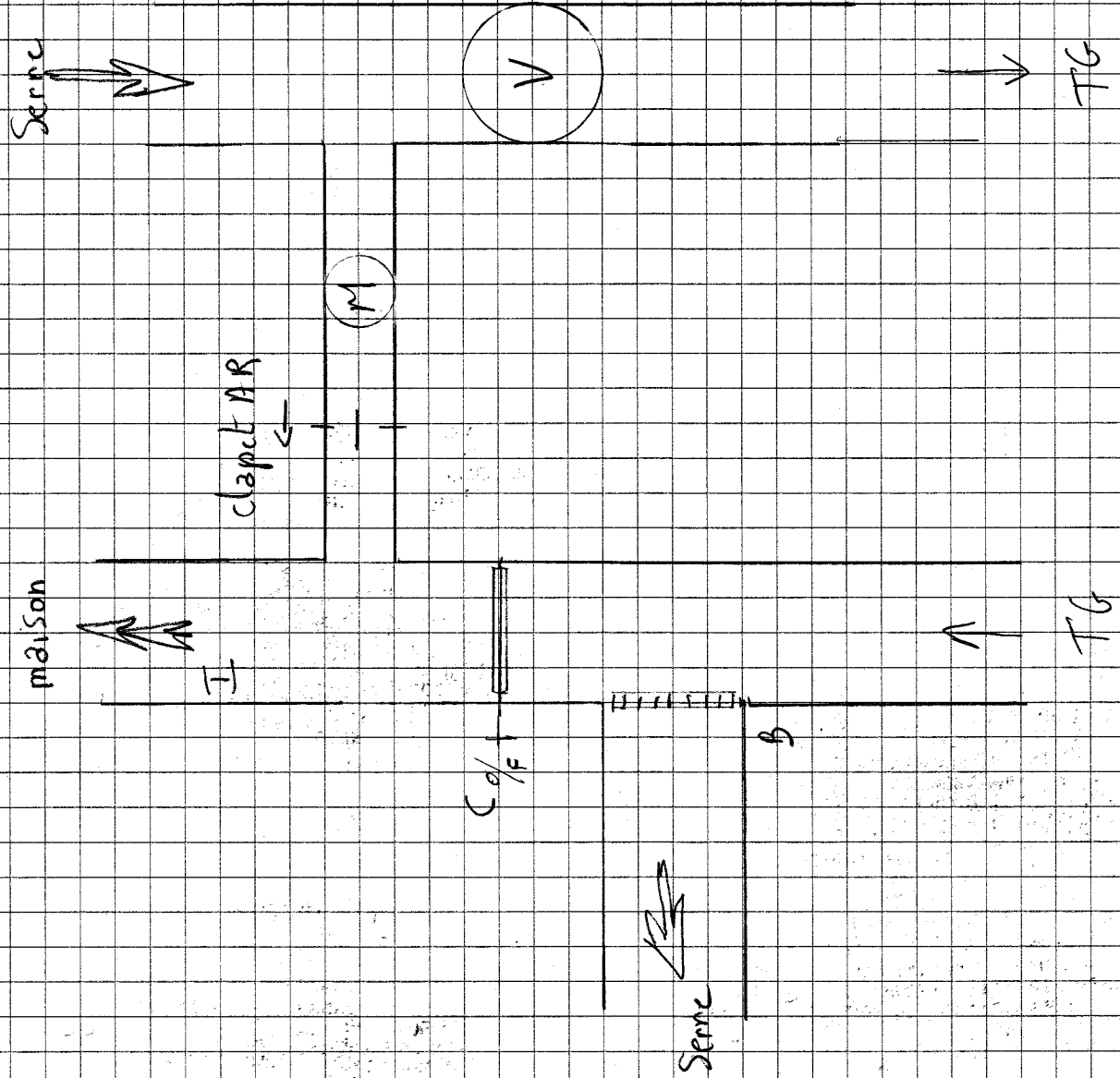


de 18/03/2012



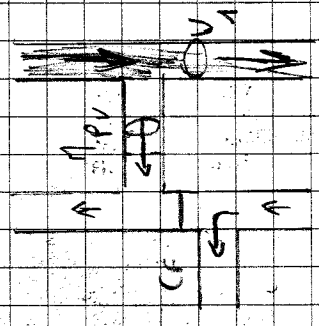
- M : petit ventilateur de by pass (0, 1V, 6V)
- V : ventilateur pour charge et décharge des TG (0, 1)
- C : Vane tout ou rien (0, F)
- B : clapet 3 positions (Fermé, ouvert, entré ouvert)

Consigne	ETF	HIVER
T. Serre	25°C	20°C
T. Maison	24°C	20°C

de 18/03/2012

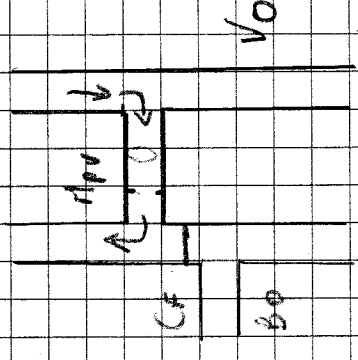
position CHARGE (ETE)

T. Serre > Consigne  
 T. Meison < Consigne



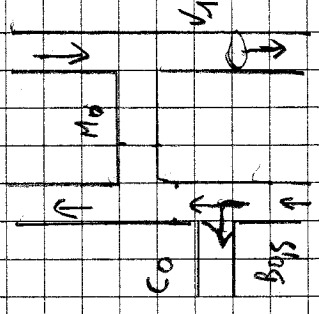
$$Mpv - V1 - CF - Ba$$

T. Serre < Consigne  
 T. Meison < Consigne



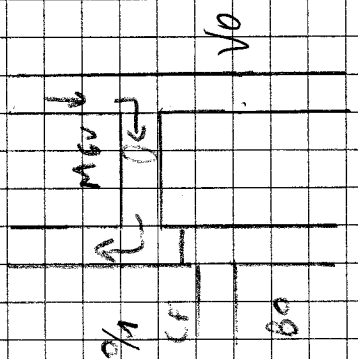
$$Mpv - V0 - CF - Bo$$

T. Serre > Consigne  
 T. Meison > Consigne



$$Mo - V1 - Co - Boys$$

T. Serre < Consigne  
 T. Meison > Consigne



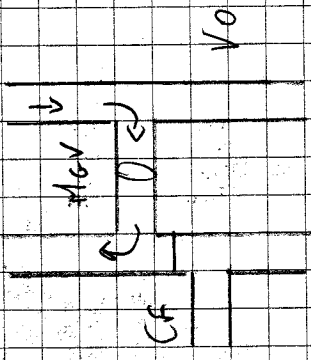
$$Mpv - V0 - (CF - Bo)$$

4/18/03/2012

Position DECHARGE (HIVER)

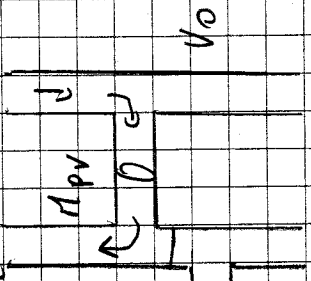
T. Serre > Consigne  
 T. Maison < Consigne

$M_{0V} - V_0 - CF - B_{0\%}$



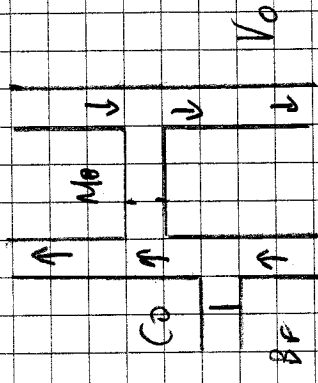
T. Serre > Consigne  
 T. Maison > Consigne

$M_{pv} - V_0 - CF - B_{0\%}$



T. Serre < Consigne  
 T. Maison < Consigne

$M_0 - V_0 - C_0 - B_F$



T. Serre < Consigne  
 T. Maison > Consigne

$M_{pv} - S_0 - CF - B_{0\%}$

