



# Technical Documentation

Drawing for eddy and eddyGT

2 Meter Tower

Drawing Number (s): UGE-1K-T200S-001

Original Date: March 7, 2011

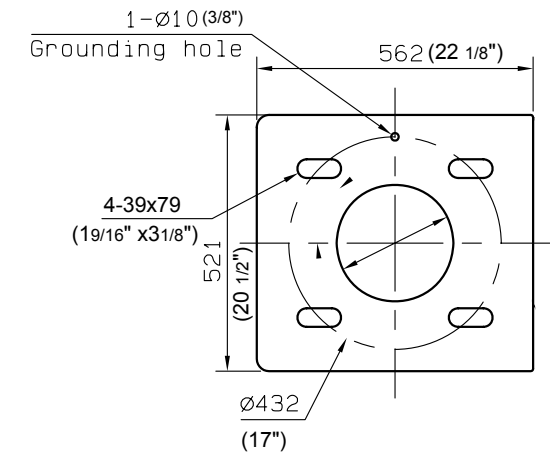
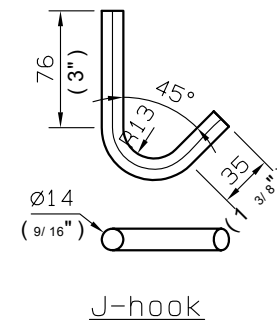
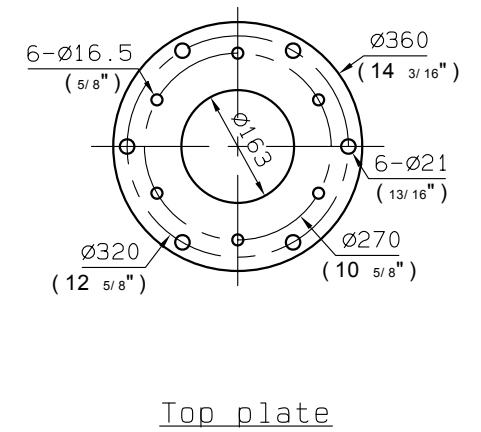
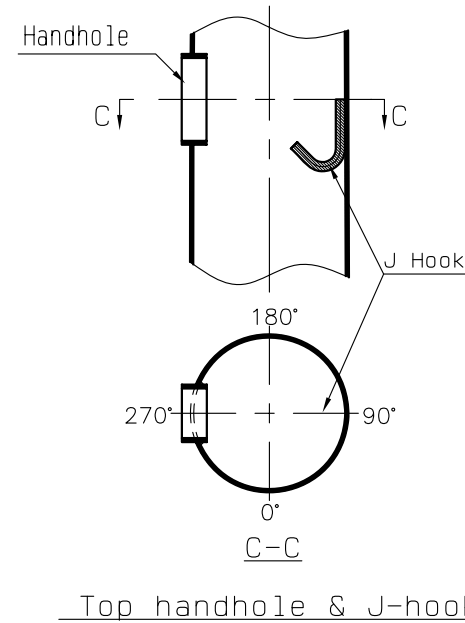
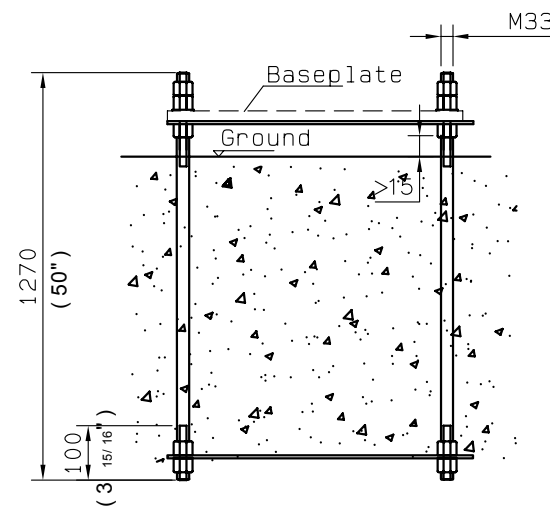
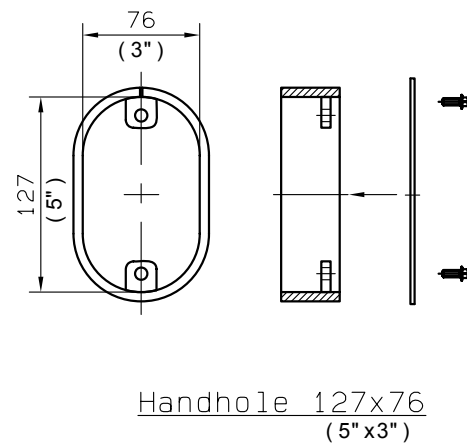
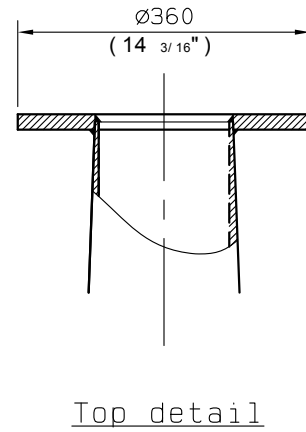
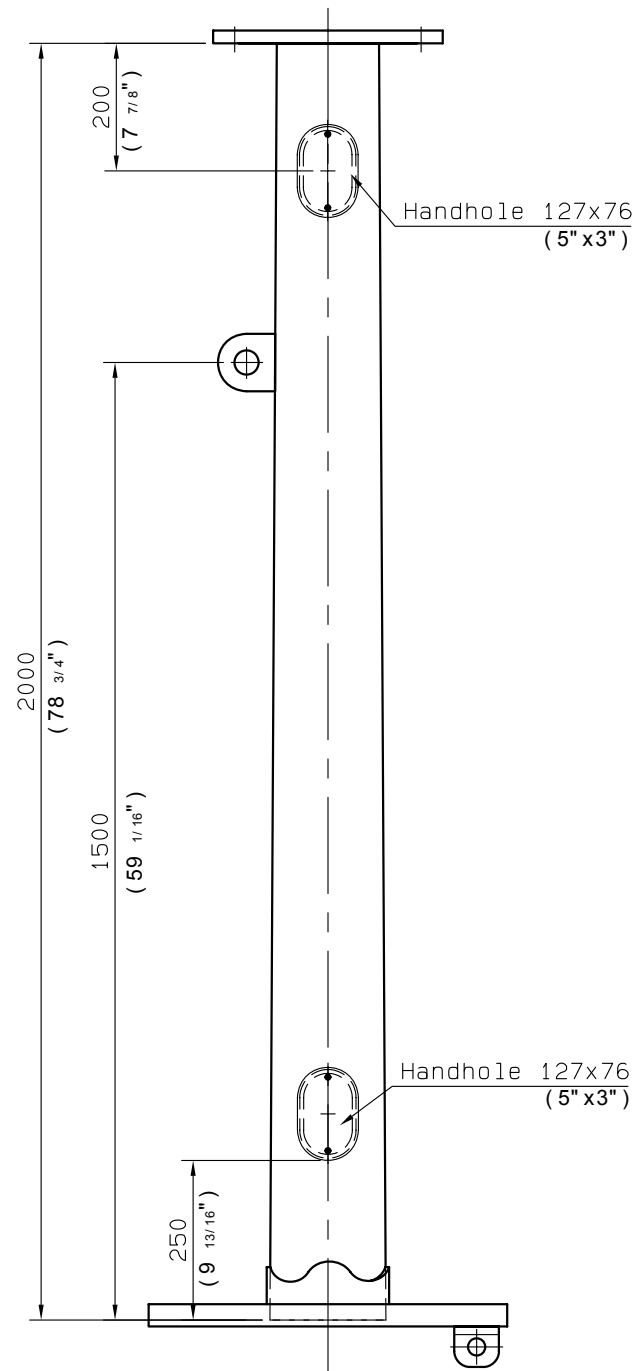
Revised On: October 26, 2012

Version: 1.4

Completed by: ARE

Checked by: SVP

Please note that our drawings are occasionally updated. You may verify the validity of this drawing by visiting: [www.urbangreenenergy.com/documents](http://www.urbangreenenergy.com/documents)



- NOTICE:**
1. Environmental temperature should be equal to or greater than -20 C.
  2. Galvanising per ASTM A123.
  3. All units are in mm (inches).

PROPRIETARY AND CONFIDENTIAL  
THE INFORMATION CONTAINED IN THIS DRAWING IS THE SOLE PROPERTY OF URBAN GREEN ENERGY, INC. ANY REPRODUCTION IN PART OR AS A WHOLE WITHOUT WRITTEN PERMISSION OF URBAN GREEN ENERGY, INC IS PROHIBITED

© 2012 URBAN GREEN ENERGY, INC

**UGE**  
URBAN GREEN ENERGY®

330 West 38th Street, Suite 1103, NY 10018 USA  
PHONE: (917) 720-5685  
www.urbangreenenergy.com

DRAWING REPRODUCED FROM:  
TOWER DRAWINGS PRODUCED BY AMERICAN RESOURCE AND ENERGY

PROJECT:  
UGE TOWER DESIGNS

DRAWING #:  
UGE-1K-02

REVISION:  
03

DRAWING TITLE:  
2m TOWER TO SUPPORT UGE-1K