

Partie II

1) $x = 0,25$

$- 8310 \times \ln 0,25 = 11520$

table 11500 ans

2) 50 Siecles = 5000

$x = 0,55 = \frac{55}{100}$

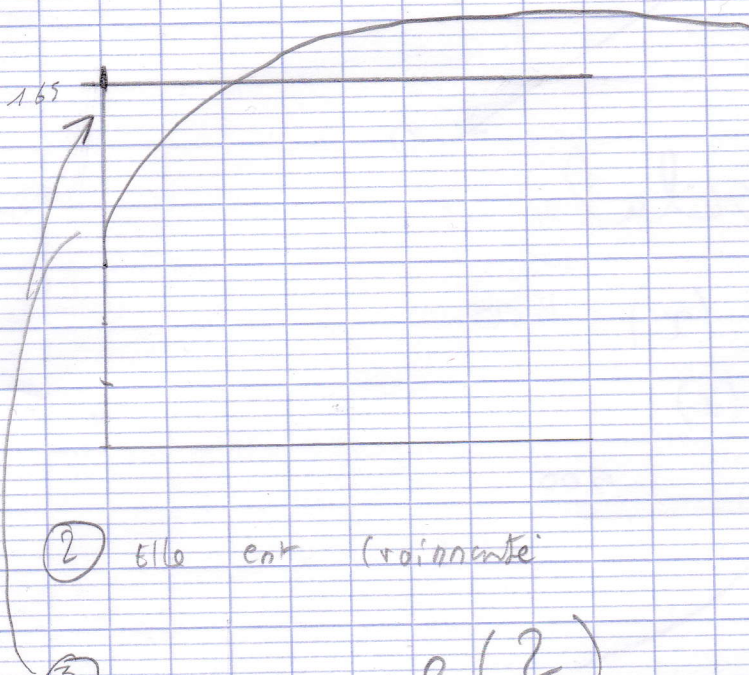
$n = 55 p 107$

Partie I

① A la calculatrice

$x_{min} = 0$ $x_{max} = 400$ $p_{ans} = 10$

$y_{min} = 50$ $y_{max} = 200$ $p_{ans} = 10$



② elle est croissante

③ via page (2)

④

↑