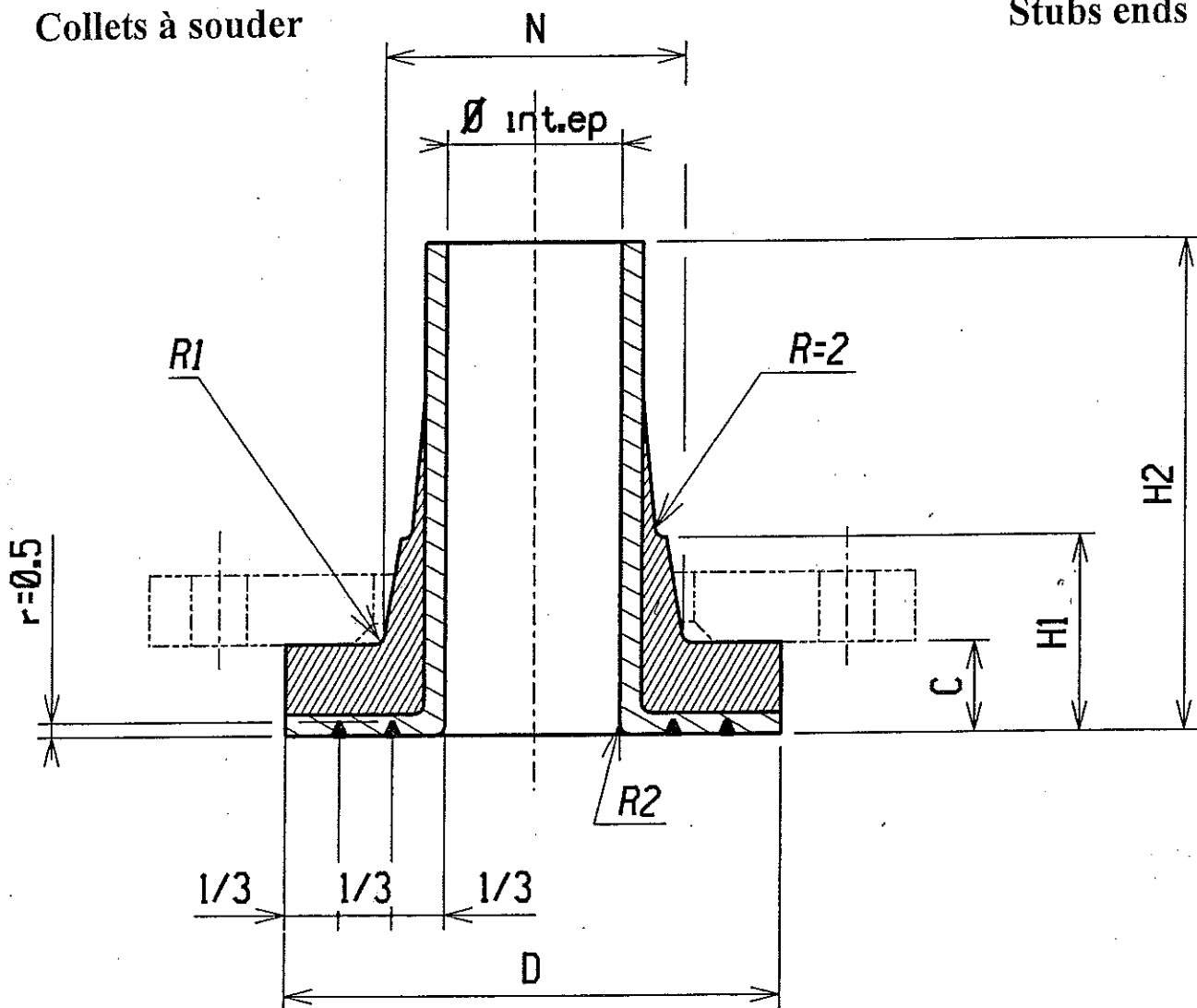


Collets à souder

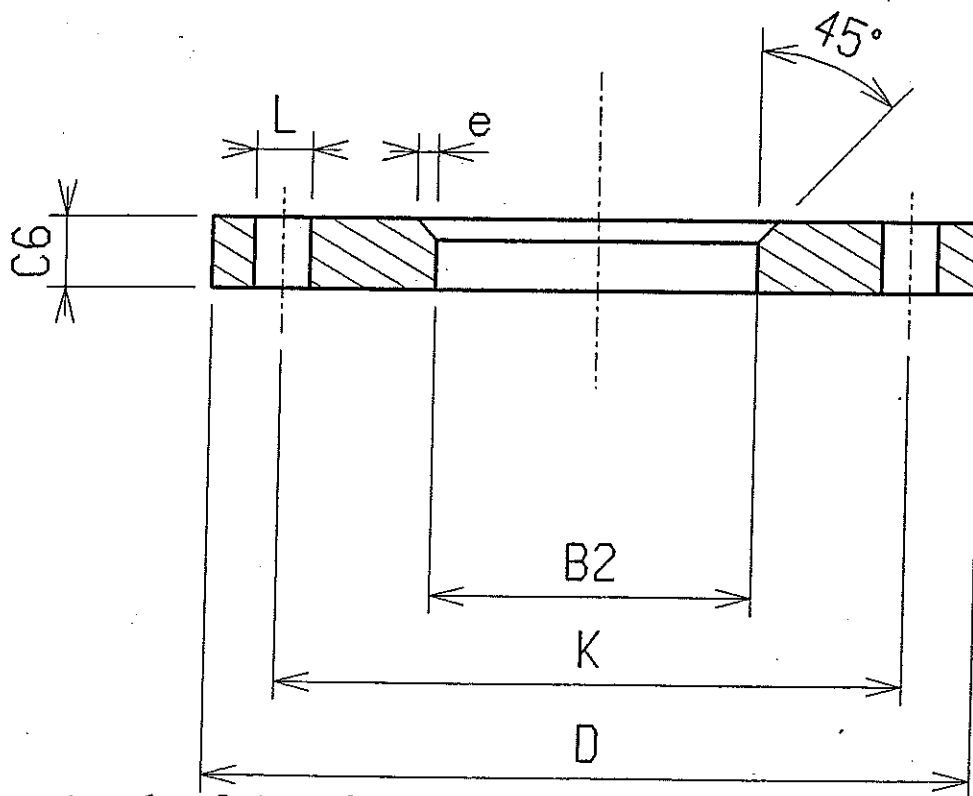
Stubs ends



Dimension Nominale		Ø int x Ep mm	D mm	C mm	H1 mm	H2 mm	N mm	R1 mm	R2 mm	Masse kg
DN	NS									
	3/4	Ø 20 x 3.3	58		33	160	40	3	3	
25	1	Ø 25 x 3.3	68	18	33	160	50	3	3	
	1 1/4	Ø 32 x 3.3	78		35	160	58	3	3	
	1 1/2	Ø 40 x 3.3	88		38	160	68	3	3	
50	2	Ø 50 x 3.3	102	20	43	160	82	3	3	
	2 1/2	Ø 65 x 3.3	122		47	160	95	3	3	
80	3	Ø 80 x 3.3	138	23	51	160	111	3	3	
100	4	Ø 100 x 3.3	158	23	58	160	133	4	4	
	5	Ø 125 x 3.3	188		67	210	164	4	4	
150	6	Ø 150 x 3.3	212	28	74	210	188	4	4	
200	8	Ø 200 x 3.3	268	32	88	210	237	5	8	
250	10	Ø 250 x 3.3	320	34	104	260	293	5	8	
300	12	Ø 300 x 3.3	370	36	119	260	343	5	8	
350	14	Ø 350 x 3.3	430	37	136	310	387	6	8	
400	16	Ø 400 x 3.3	482	44	150	310	441	6	8	
500		Ø 500 x 3.3		48						
600		Ø 600 x 3.3		63						

Bride tournante  
acier PN 10

Steel loose  
flange PN 10



NOTA : BR. T. DN500 PN6 = 30 mm

Dimension Nominale		D mm	C6 mm	B2 mm	e mm	Nb trous	L mm	K mm
DN	NS							
	3/4	105		40.5	3.5	4	14	75
25	1	115	16	50.5	3.5	4	14	85
	1 1/4	140		58.5	3.5	4	18	100
	1 1/2	150		68.5	3.5	4	18	110
50	2	165	18	82.5	3.5	4	18	125
	2 1/2	185		95.5	3.5	4	18	145
80	3	200	22	111.5	3.5	8	18	160
100	4	220	22	133.5	4.5	8	18	180
	5	250		164.5	4.5	8	18	210
150	6	285	24	188.5	4.5	8	22	240
200	8	340	26	238	6	8	22	295
250	10	395	28	294	6	12	22	350
300	12	445	28	344	6	12	22	400
350	14	505	30	388	7	16	22	460
400	16	565	32	442	7	16	26	515
	18	615		492	8	20	26	565
500	20	670	34	544	8	20	26	620
600	24	780	36	641	8	20	30	725