

SYNCHRONOUS MOTOR UNITS

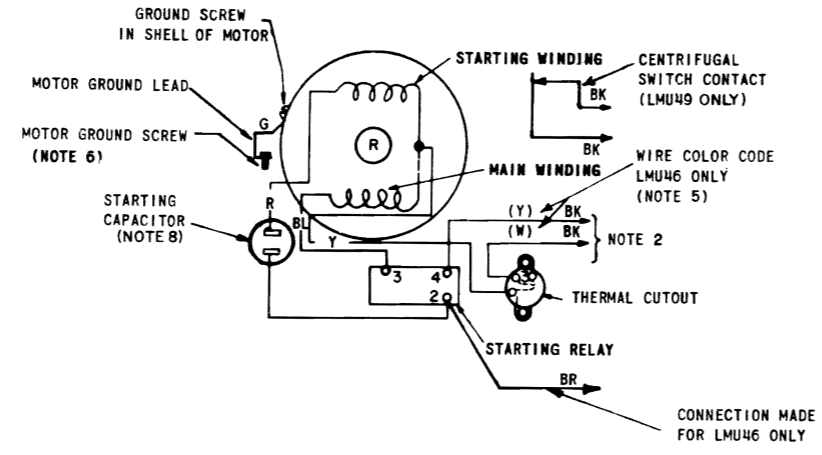
NOTE: REVISION INFORMATION MUST ALSO BE REFLECTED ON THE ISSUE CONTROL RECORD, WHICH IS A PART OF THIS DRAWING

2900WD

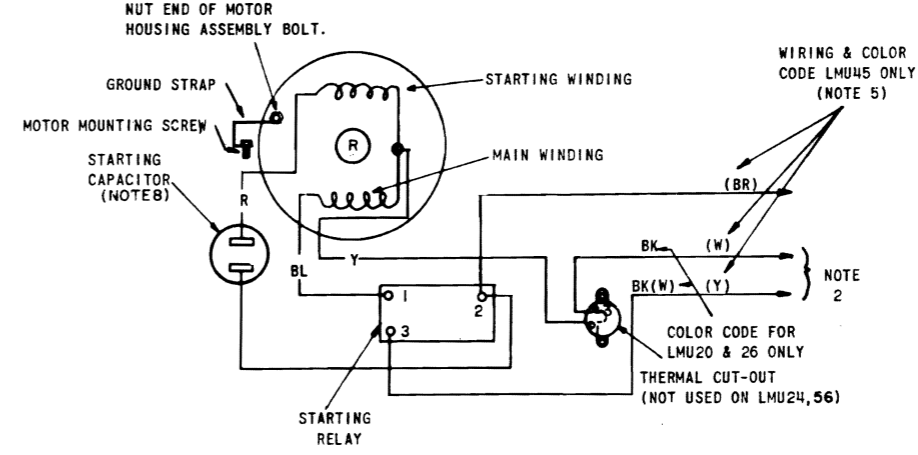
REVISIONS

ISSUE	DATE	AUTH. NO.
45	8-15-69	99487

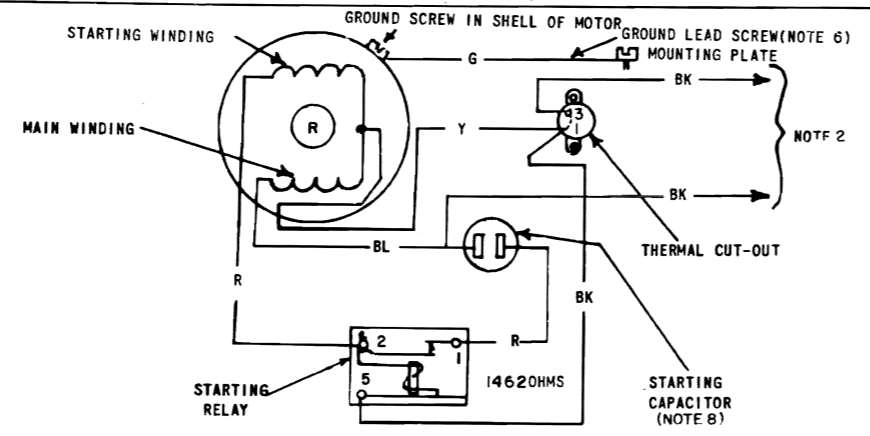
NO.	NOTES														
1.	SYNCHRONOUS MOTOR OPERATES ON REGULATED FREQUENCY ($\pm 0.75\%$) MAXIMUM AC ONLY.														
2.	CONNECT EITHER WIRE TO DESIGNATED TERMINALS OF UNIT TERMINAL BLOCK, PER WIRING DIAGRAM OF ASSOCIATED UNIT														
3.	MOTOR LEADS OF SAME COLOR ARE INTER-CHANGEABLE.														
5.	EXTERNAL NOISE SUPPRESSION NETWORK CONSISTING OF 100 OHM, 1/2 WATT RESISTOR IN SERIES WITH 0.25 MFD 1K V CAPACITOR CONNECTED ACROSS YELLOW AND BROWN WIRES. (FOR LMU45,46)														
6.	MOTOR GROUND LEAD (GREEN) TERMINAL MUST BE FASTENED TO MOUNTING CRADLE OF MOTOR UNDER A SEPARATE GROUND SCREW ONLY. A SCREW USED FOR ANOTHER PURPOSE CANNOT BE USED FOR GROUNDING (UNDERWRITERS LABORATORIES REQUIREMENT).														
7.	WIRE COLOR CODE: BK - BLACK R - RED BL - BLUE O - ORANGE BR - BROWN Y - YELLOW P - PURPLE S - SLATE W - WHITE 6 - GREEN														
8.	<table border="1"> <thead> <tr> <th>LMU</th> <th>STARTING CAPACITOR VALUE</th> </tr> </thead> <tbody> <tr> <td>3,15,21,30,33,36,37,38,42,46,49,51,52</td> <td>43-48 MFD</td> </tr> <tr> <td>11,12</td> <td>170-226 MFD</td> </tr> <tr> <td>35</td> <td>64-77 MFD</td> </tr> <tr> <td>55</td> <td>15-18 MFD</td> </tr> <tr> <td>19,20,24,26,31,45,56</td> <td>88-108 MFD</td> </tr> <tr> <td>50,</td> <td>161-193 MFD</td> </tr> </tbody> </table>	LMU	STARTING CAPACITOR VALUE	3,15,21,30,33,36,37,38,42,46,49,51,52	43-48 MFD	11,12	170-226 MFD	35	64-77 MFD	55	15-18 MFD	19,20,24,26,31,45,56	88-108 MFD	50,	161-193 MFD
LMU	STARTING CAPACITOR VALUE														
3,15,21,30,33,36,37,38,42,46,49,51,52	43-48 MFD														
11,12	170-226 MFD														
35	64-77 MFD														
55	15-18 MFD														
19,20,24,26,31,45,56	88-108 MFD														
50,	161-193 MFD														



LMU 3,11,12,15,21,30,37,42,46,49
 FOR USE WITH 115V.A.C. 60~POWER SUPPLY
LMU 33, 36,38, 51,52
 FOR 115V.A.C. 50~POWER SUPPLY.
LMU 55
 FOR 230 V.A.C. 50~POWER SUPPLY

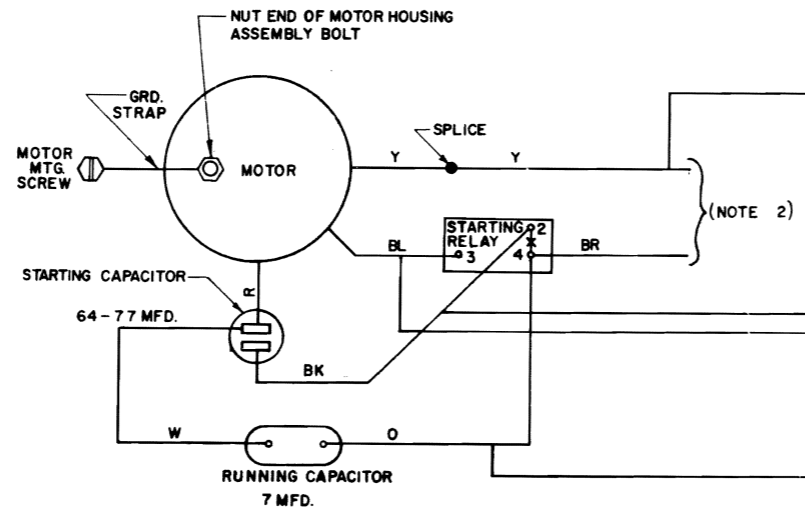
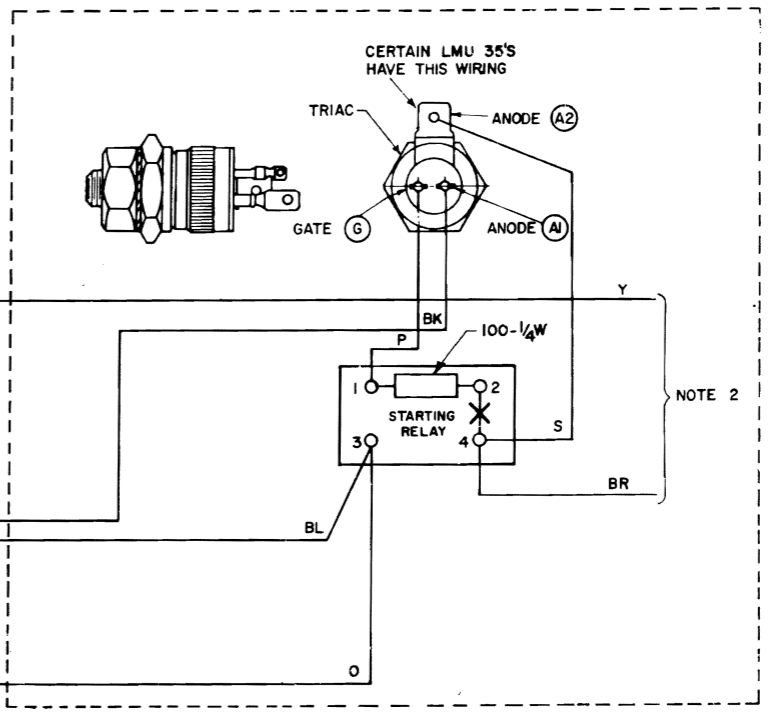


LMU 19,20,24,26,31,45,56
 FOR USE WITH 115V AC 60~POWER SUPPLY ONLY



LMU 50,
 FOR USE WITH 115V AC 50~POWER SUPPLY ONLY

LMU 35



SEE ISSUE CONTROL RECORD FOR COMPLETE LIST OF SHEETS COMPRISING THIS W.D.

SHEET 1

ACTUAL WIRING DIAGRAM FOR MODEL 28 & 35 MOTOR UNITS

APPROVALS

D AND R	E OF M
---------	--------

E-NUMBER
PROD. NO. 2900WD
DATE 1-28-55
P.D. FILE NO. 1-30.65.156A
DRAWN S.R. CHKD. RYJ
ENGD. B.M.S. APPD.

TELETYPE CORPORATION

2900WD